



SRI LANKA

**LISTING OF NON - AGRICULTURAL  
ECONOMIC ACTIVITIES  
1995**

**Rural Sector**

**District Report**

**Kurunegala District**

*department of census and statistics  
ministry of finance and planning*





**LISTING OF NON - AGRICULTURAL  
ECONOMIC ACTIVITIES  
1995**

**Rural Sector**

**District Report**

**Kurunegala District**

LISTING OF NON - AGRICULTURAL

ECONOMIC ACTIVITIES

1999

Rural Sector

ISBN 955 - 577 - 256 - 8

District Report

Kannur District

Published in 1999

படிப்புகம்

## PREFACE

The Department of Census and Statistics carried out a comprehensive listing of Non Agricultural Economic Activities in 1995 and covered rural areas of all provinces except Northern and Eastern provinces.

This report which includes basic Industrial statistics in the rural sector of the Kurunegala District is prepared to serve the immediate needs of the Grama Niladhari Division and Divisional Secretariat Divisional level data users. It is planned to publish the similar reports for all relevant Districts and the all island report.

I hope that the information presented in this document, though it is provisional will be of immense use to planners and policy makers.



A.G.W. Nanayakkara.  
Director General.  
Dept. of Census & Statistics,  
No. 15/12,  
Maitland Crescent,  
Colombo 07.  
27th. July 1999.

## ACKNOWLEDGEMENT

The listing operation of Non- Agricultural Economic Activities was undertaken by the Department of Census & Statistics which was funded by Institute of Construction Training and Development (ICTAD). This operation was planned mainly to establish a frame of building material industries and to ascertain the out put of the construction sector.

The planning, execution and successful completion of the entire listing operation were performed by the staff of Industry and Construction Division of the Department.

Enumerators who did the listing operation at the Grama Niladhari Division level, Statistical Investigators who were responsible for data collection and the District Statisticians / Statistical Officers who cordinated the activity are acknowledged.

The staff of the Data Processing Division and Statistical Investigators attached to some District offices who were engaged in computer data entry activities are much appreciated.

Special thanks are due to District Secretary and Divisional Secretaries of the District whose fullest co-operation was very vital to the successful completion of this operation.

Preparation of this publication was done by Mr. D.S.S.Gunawardana Statistical Officer using Apple Mackintosh and the statistical tables were obtained by Mr. R.D.N. Premawansa Statistical Investigator using SPSS PC+.

Acknowledgements are also due to Mr. K. D. Siripala, Deputy Director and his staff for printing this report within a short period.

The co-operation given by the respondents is also much appreciated.

## CONTENTS

	<b>PAGE</b>
<b>1. PREFACE</b>	
<b>2. ACKNOWLEDGEMENT</b>	
<b>3. CONTENTS</b>	
<b>A. INTRODUCTION</b>	<b>1</b>
<b>B. COVERAGE</b>	<b>1</b>
<b>C. LISTING OPERATION</b>	<b>2</b>
<b>D. PREPARATION OF TABLES</b>	<b>2</b>
<b>4. TABLES</b>	<b>5 - 49</b>
<b>5. CHARTS</b>	<b>50 - 55</b>
<b>6. ANNEX</b>	<b>56</b>
<b>Table Nos:</b>	
<b>1. No. of Establishments &amp; persons engaged by     Divisional Secretary Division 1995.</b>	<b>5</b>
<b>2. No. of Establishments &amp; persons engaged by     Divisional Secretary Division &amp; by Sector 1995.</b>	<b>6</b>
<b>3. No. of Establishments &amp; persons engaged by     Divisional Secretary Division &amp; by Size Class 1995.</b>	<b>7</b>
<b>4. No. of Establishments &amp; persons engaged by     Major Industry Division ( ISIC 1 digit level ) 1995.</b>	<b>8</b>
<b>5. No. of Establishments &amp; persons engaged by     Industry Division. ( ISIC 2 digit level ) 1995.</b>	<b>8</b>
<b>6. No. of Establishments &amp; persons engaged by     Major Industry Group ( ISIC 3 digit level ) 1995.</b>	<b>9</b>
<b>7. No. of Establishments &amp; persons engaged by     Industry Group ( ISIC 4 digit level ) 1995.</b>	<b>10</b>

## Table Nos:

## Page

8.	<b>No. of Establishments &amp; persons engaged by Divisional Secretary Division &amp; Major Industry Division ( ISIC 1 digit level ) 1995.</b>	12
9.	<b>No. of Establishments &amp; persons engaged by Divisional Secretary Division &amp; Industry Division ( ISIC 2 digit level ) 1995.</b>	14
10.	<b>Distribution of Establishments &amp; persons engaged by Divisional Secretary Division &amp; persons engaged size class 1995.</b>	24

## Chart Nos:

1.	<b>No. of Establishments by Divisional Secretary Division 1995.</b>	50
2.	<b>Persons engaged by Divisional Secretary Division 1995.</b>	51
3.	<b>No. of Establishments by persons engaged size class 1995.</b>	52
4.	<b>Persons engaged by size class 1995.</b>	53
5.	<b>No. of Establishments by Industry Division 1995.</b>	54
6.	<b>No. of Establishments &amp; persons engaged by Type of Sector 1995.</b>	55



## **Listing of Non Agricultural Economic Activities - 1995**

### **A. Introduction**

Listing of Non Agricultural Economic Activities was conducted in stage is in Rural Sector covering all districts except the districts in Northern & Eastern Provinces. The main objective of this exercise was to identify the building material producing units and to compile the value of construction output of the housing sector as required by ICTAD. However, in order to make the exercise complete all non agricultural activities were enumerated.

A Grama Niladhari ( GN ) Division or a part of GN Division was considered as an enumeration area and enumerators were appointed by the Divisional Secretary of the area. The enumerator prepared a list of non agricultural economic activities by visiting each and every building in the enumeration area under the supervision of District Statistical Staff and the Head Office Staff.

### **B. Coverage**

#### **i. Economic Activities**

The following Economic Activities were covered by the listing of non-agricultural economic activities.

1. Mining and Quarrying
2. Manufacturing
3. Electricity, Gas production & Water supply
4. Trade, Hotels and restaurants
5. Transport, Communication & Storage
6. Finance, Insurance, Real estate and business services
7. Public Administration, Education & Health activities
8. Community and Social Service & Private service activities
9. Construction

#### **ii Area**

This listing operation covered only the rural sector in Sri Lanka and did not cover:

1. Northern and Eastern Provinces
2. All Municipal Councils and Urban Councils
3. Areas covered by the Board of Investment

### C. Listing Operation

The recruited enumerators were given a two days training by panel of trainers selected and trained for that purpose in advance. An enumerator is assigned to each enumeration area which is usually a GN Division . When the GN Division is spread over a larger area or has a large number of housing units / buildings, the GN Division is divided into two enumeration areas.

The enumerators were asked to complete one line in the listing form (L) for each housing unit / building with the following information.

1. Name of the owner proprietor of the enterprise/chief occupant
2. Postal address
3. Nature of the unit
4. Type of Economic activity
5. Type of construction activity
6. Numbe of residents

If the housing unit/building was having the activities on

1. Mining and quarrying
2. Manufacturing
3. Electricity, Gas and Water

The following further information is inserted to the L1 form.

1. Economic Organization of the Establishment
2. Type of ownership of the establishment
3. Type of Industry
4. Major Products produced by the establishment
5. Persons engaged in the industry

Further if the housing units/building had done some construction activities during the reference period that too were included in an another form called L 3 with the following additional information.

1. Type of the Construction Activity done during the period from January to June in 1995
2. Expenditure/Estimated expenditure incurred during the period
3. Source of funds

#### D. Preparation of Tables

The information collected by the enumerators through L1 form was checked for completeness and data coded by the range Statistical Investigator under the supervision of the District Statistician/Statistical Officer. When two major products were given for an establishment, but products were coded using the information available in column 6 & 7. However the code for the 1st product is considered as the code relevant for the whole establishment in the tabulation procedure.

In most of the districts, data entry was done at the District Office itself using the personal computers available there. However L1 forms relevant to few districts were fed to the computer by the Data Processing Division of the Department.

The tabulation was done by the Industry and Construction Division using the SPSS PC+ package. The tables consist number of establishments and the persons engaged by Divisional Secretary Division and ISIC two digit level (Revision 3) in one set and ISIC 4 digit level (Revision 03) at district level in the other set. In cases when it is felt that the individual identification is disclosed, the information is either combined with another category or suppressed.

The first part of the book is devoted to a study of the history of the Tamil language and literature. The author traces the roots of the Tamil language to the Dravidian family and discusses its development over the centuries. He also examines the influence of Sanskrit and other languages on Tamil literature.

The second part of the book is devoted to a study of the history of the Tamil people. The author traces the roots of the Tamil people to the Dravidian family and discusses their migration and settlement in the South Indian peninsula.

The third part of the book is devoted to a study of the history of the Tamil language and literature. The author traces the roots of the Tamil language and literature to the Dravidian family and discusses its development over the centuries.

**TABLE 1: NO. OF ESTABLISHMENT\* & PERSONS ENGAGED BY DIVISIONAL  
SECRETARY DIVISION  
KURUNEGALA DISTRICT - RURAL SECTOR - 1995**

D. S. DIVISION	NO. OF ESTABLISHMENTS	PERSONS ENGAGED
ALAWWA.....	2,125	5,019
BINGIRIYA.....	1,003	3,091
GALGANUWA.....	940	1,707
GANBWATTA.....	386	1,318
GIRIBAWA.....	374	560
IBBAGAMUWA.....	990	4,094
KATUPOTHA.....	984	2,610
KOBBIGANE.....	450	1,155
KOTAWEHHERA.....	231	390
KULIYAPITIYA WEST.....	1,106	4,029
KULIYAPITIYA EAST.....	620	1,861
KURUNEGALA.....	535	2,514
MAHAWA.....	764	1,882
MALLAWAPITIYA.....	715	1,979
MASPOTHA.....	566	2,127
MAWATHAGAMA.....	771	2,824
NARAMMALA.....	850	2,831
NIKAWERATIYA.....	441	1,470
PANDUWASNUWARA.....	1,227	4,199
PANNALA.....	3,061	16,998
POLGAHAWELA.....	610	2,103
POLPITHIGAMA.....	761	1,884
RASNAYAKAPURA.....	322	651
RIDDEGAMA.....	1,159	4,358
UDUBADDANA.....	780	2,950
WARIYAPOLA.....	546	1,738
WERRAMBUGEDARA.....	445	1,418
<b>TOTAL.....</b>	<b>22,762</b>	<b>77,760</b>

\* - MINING & QUARRYING AND MANUFACTURING



TABLE 2:NO.OF ESTABLISHMENT\* & PERSONS ENGAGED BY DIVISIONAL SECRETARY DIVISION & BY SECTOR  
KURUNEGALA DISTRICT - RURAL SECTOR - 1995

D.S.DIVISION	TYPE OF SECTOR			
	PRIVATE **		OTHER	
	NO.OF ESTABLISHMENTS	PERSONS ENGAGED	NO.OF ESTABLISHMENTS	PERSONS ENGAGED
ALAWWA.....	2,041	4,834	84	185
BINGIRIYA.....	866	2,568	137	523
GALGANUWA.....	928	1,647	12	60
GANNWATTA.....	338	1,189	48	129
GIRIBAWA.....	365	548	9	12
IBBAGANUWA.....	972	3,886	18	208
KATUPOTHA.....	982	2,596	2	14
KOBBIGANE.....	437	1,030	13	125
KOTAWHERA.....	230	382	1	8
KULIYAPITIYA WEST.....	1,093	3,891	13	138
KULIYAPITIYA EAST.....	613	1,812	7	49
KURUNEGALA.....	527	2,341	8	173
MAHAWA.....	754	1,830	10	52
MALLAWAPITIYA.....	702	1,926	13	53
MASPOTHA.....	555	2,033	11	94
MAWATHAGAMA.....	762	2,658	9	166
MARAMWALA.....	845	2,784	5	47
MIKAWERATIYA.....	423	924	18	546
PANDUWASNUWARA.....	1,173	3,976	54	223
PANNALA.....	3,002	14,361	59	2,637
POLGAHAWELA.....	594	1,831	16	272
POLPITHIGAMA.....	757	1,880	4	4
RASWATAKAPURA.....	322	651	.	.
RIDDEGAMA.....	1,133	4,189	26	169
UDUBADDAWA.....	758	2,811	22	139
WARIYAPOLA.....	508	1,500	38	238
WEERAMBUGEDARA.....	436	1,342	9	76
TOTAL.....	22,116	71,420	646	6,340

\* - MINING & QUARRYING AND MANUFACTURING

\*\* - EXCLUDING B.O.I.

TABLE 3: NO. OF ESTABLISHMENT\* & PERSONS ENGAGED BY DIVISIONAL SECRETARY DIVISION & BY SIZE CLASS  
KURUNEGALA DISTRICT - RURAL SECTOR - 1995

D.S. DIVISION	PERSONS ENGAGED SIZE CLASS					
	1 - 4		5 - 14		15 & ABOVE	
	NO. OF ESTABLISHMENTS	PERSONS ENGAGED	NO. OF ESTABLISHMENTS	PERSONS ENGAGED	NO. OF ESTABLISHMENTS	PERSONS ENGAGED
ALAWA.....	2,027	2,885	91	564	7	1,570
BINGIRIYA.....	880	1,827	104	742	19	522
GALGANUWA.....	911	1,443	26	164	4	475
GAMBWATTA.....	349	683	36	260	-	-
GIRIBAWA.....	367	518	7	42	.	.
IBBAGAMUWA.....	877	1,447	79	545	34	2,102
KATUPOTHA.....	915	1,570	62	417	7	623
KOBBIGAMB.....	406	739	35	253	9	163
KOTAWEHERA.....	226	357	5	33	.	.
KULIYAPITIYA WEST.....	981	1,884	98	680	27	1,465
KULIYAPITIYA EAST.....	546	943	60	430	14	488
KURUNEGALA.....	436	814	70	520	29	1,180
MAHAWA.....	717	1,252	38	260	9	370
MALLAWAPITIYA.....	658	1,066	39	263	18	650
MASPOTHA.....	491	942	58	395	17	790
MAWATHAGAMA.....	682	1,263	72	489	17	1,072
NARAMMALA.....	762	1,268	68	458	20	1,105
NIKAWERATIYA.....	406	726	31	218	4	526
PANDUWASAMUWARA.....	1,090	1,982	95	649	42	1,568
PANNALA.....	2,343	4,906	603	4,366	115	7,726
POLGAHAWELA.....	536	946	66	448	8	709
POLPITHIGAMA.....	731	1,135	28	179	3	600
RASAYAKAPURA.....	300	501	21	120	-	-
RIDDEGAMA.....	1,025	1,658	106	752	28	1,948
UDUBADDAWA.....	670	1,392	80	562	30	996
WARIYAPOLA.....	476	909	55	367	15	462
WEERANBUGEDARA.....	412	724	27	204	6	490
TOTAL.....	20,220	35,780	2,060	14,380	482	27,600

\* - MINING & QUARRYING AND MANUFACTURING

TABLE 4: NO. OF ESTABLISHMENT\* & PERSONS ENGAGED BY MAJOR INDUSTRY DIVISION\*\* (ISIC 1 DIGIT LEVEL)  
KURUNEGALA DISTRICT - RURAL SECTOR - 1995

MAJOR INDUSTRY DIVISION	NO. OF ESTABLISHMENTS	PERSONS ENGAGED
C MINING & QUARRYING.....	842	3,686
D MANUFACTURING.....	21,920	74,074
TOTAL.....	22,762	77,760

\* - MINING & QUARRYING AND MANUFACTURING

\*\* - ISIC REVISION 03

TABLE 5: NO. OF ESTABLISHMENT\* & PERSONS ENGAGED BY INDUSTRY DIVISION\*\* (ISIC 2 DIGIT LEVEL)  
KURUNEGALA DISTRICT - RURAL SECTOR - 1995

INDUSTRY DIVISION	NO. OF ESTABLISHMENTS	PERSONS ENGAGED
14 OTHER MINING & QUARRYING.....	842	3,686
15 FOOD PRODUCTS & BEVERAGES.....	6,412	18,060
16 TOBACCO PRODUCTS.....	1,981	4,291
17 TEXTILES.....	2,593	13,437
18 WEARING APPERBL DRESSING & DYEING OF FUR.....	1,065	11,690
19 TRAINING & DRSSING OF LEATHER, LEATHER GOODS & FOOTWEAR...	37	136
20 WOOD & WOOD PRODUCTS, EXCEPT FURNITURE.....	2,774	5,849
21 PAPER & PAPER PRODUCTS.....	95	395
22 PUBLISHING, PRINTING & REPRODUCTION OF RECORDED MEDIA.....	9	18
23 COKE, REFINED PETROLEUM PRODUC.....	4	13
24 CHEMICALS & CHEMICAL PRODUCTS.....	132	526
25 RUBBER & PLASTICS PRODUCTS.....	231	1,027
26 OTHER NON-METALIC MINERAL PRODUCTS.....	3,913	12,128
27 BASIC METAL INDUSTRIES.....	54	112
28 FABRICATED METAL PRODUCTS, EXCEPT MACHINERY & EQUIPMENT.....	591	1,174
29 MACHINERY & EQUIPMENT N.B.C.....	81	221
31 ELECTRICAL MACHINERY & APPARATUS N.B.C.....	4	11
32 RADIO, TELEVISION & COMMUNICATION EQUIPMENT & APPARATUS.....	8	50
33 MEDICAL, PRECISION & OPTICAL INDUSTRIES, WATCHES & CLOCKS....	3	8
34 MOTOR VEHICLES, TRAILERS & SEMI-TRAILERS.....	35	139
35 OTHER TRANSPORT EQUIPMENT.....	19	32
36 MANU. OF FURNITURE, MANUFACTURING N.B.C.....	1,696	3,856
37 RECYCLING.....	160	659
99 OTHER PRODUCT.....	23	242
TOTAL.....	22,762	77,760

\* - MINING & QUARRYING AND MANUFACTURING

\*\* - ISIC REVISION 03

TABLE 6: NO. OF ESTABLISHMENT\* & PERSONS ENGAGED BY MAJOR INDUSTRY GROUP\*\* (ISIC 3 DIGIT LEVEL)  
KURUNEGALA DISTRICT - RURAL SECTOR - 1995

MAJOR INDUSTRY GROUP	NO. OF ESTABLISHMENTS	PERSONS ENGAGED
141 QUARRYING OF STONE, SAND & CLAY.....	838	3,651
142 MINING & QUARRYING N.E.C.....	4	35
151 MEAT, FISH, FRUIT, VEGETABLE, OILS & FATS PRODUCTS.....	1,199	6,841
152 MANU. OF DAIRY PRODUCTS.....	86	402
153 GRAIN MILL, STARCHES & STARCH PRODUCTS, ANIMAL FEEDS.....	3,065	5,859
154 OTHER FOOD PRODUCTS.....	2,038	4,888
155 BEVERAGES.....	24	70
160 TOBACCO PRODUCTS.....	1,981	4,291
171 SPINNING, WEAVING & FINISHING OF TEXTILES.....	649	8,293
172 OTHER TEXTILES.....	1,936	5,116
173 KNITTED & CROCHETED FABRICS & ARTICLES.....	8	28
181 WEARING APPAREL, EXCEPT FUR APPAREL.....	1,065	11,690
191 TANNING & LEATHER.....	10	35
192 MANU. OF FOOTWEAR.....	27	101
201 SAWMILLING & PLANING OF WOOD.....	488	1,769
202 MANU. OF PRODUCTS OF WOOD, CORK, STRAW & PLAITING MATERIALS..	2,286	4,080
210 PAPER & PAPER PRODUCTS.....	95	395
221 PUBLISHING.....	9	18
231 COKE OVEN PRODUCTS.....	4	13
242 OTHER CHEMICALS PRODUCTS.....	124	507
243 MAN-MADE FIBRES.....	8	19
251 RUBBER PRODUCTS.....	79	596
252 PLASTIC PRODUCTS.....	152	431
261 GLASS & GLASS PRODUCTS.....	33	110
269 NON-METALLIC MINERAL PRODUCTS N.E.C.....	3,880	12,018
271 BASIC IRON & STEEL.....	28	59
272 BASIC FERROUS & NON-FERROUS.....	4	10
273 CASTING OF METALS.....	22	43
281 STRUCTURAL METAL PRODUCTS.....	202	492
289 OTHER FABRICATED METAL PRODUCTS.....	389	682
291 GENERAL PURPOSE MACHINERY.....	6	23
292 SPECIAL PURPOSE MACHINERY.....	75	198
311 ELECTRIC MOTORS, GENERATORS & TRANSFORMERS.....	4	11
321 ELECTRONIC VALVES & TUBES & OTHER ELECTRONIC COMPONENTS...	4	43
323 TELEVISION & RADIO RECEIVERS & ASSOCIATED.....	4	7
332 OPTICAL INSTRUMENTS & PHOTOGRAPHIC EQUIPMENT.....	3	8
341 MOTOR VEHICLES.....	10	27
342 MANU. OF BODIES (COACHWORK) FOR MOTOR VEHICLES.....	17	93
343 PARTS & ACCESSORIES FOR MOTOR VEHICLES & ENGINES.....	8	19
359 MANU. OF TRANSPORT EQUIPMENT N.E.C.....	19	32
361 MANU. OF FURNITURE.....	1,076	2,217
369 MANUFACTURING N.E.C.....	620	1,639
372 RECYCLING OF NON-METAL WASTE & SCRAP.....	160	659
999 OTHER PRODUCT.....	23	242
TOTAL.....	22,762	77,760

\* - MINING & QUARRYING AND MANUFACTURING

\*\* - ISIC REVISION 03

TABLE 7: NO. OF ESTABLISHMENT\* & PERSONS ENGAGED BY INDUSTRY GROUP\*\* (ISIC 4 DIGIT LEVEL)  
KURUNEGALA DISTRICT - RURAL SECTOR - 1995

INDUSTRY GROUP	NO. OF ESTABLISHMENTS	PERSONS ENGAGED
1410 QUARRYING OF STONE, SAND & CLAY.....	838	3,651
1429 OTHER MINING & QUARRYING N.E.C.....	4	35
1511 PRODU., PROCESSING & PRESERVING OF MEAT & MEAT PRODUCTS...	64	129
1512 PROCESSING & PRESERVING OF FISH & FISH PRODUCTS.....	3	4
1513 PROCESSING & PRESERVING OF FRUIT & VEGETABLES.....	940	5,358
1514 MANU. OF VEGETABLES & ANIMAL OILS & FATS.....	192	1,350
1520 DAIRY PRODUCTS.....	86	402
1531 GRAIN MILL PRODUCTS.....	3,047	5,522
1532 STARCHES & STARCH PRODUCTS.....	3	4
1533 PREPARED ANIMAL FEEDS.....	15	333
1541 BAKERY PRODUCTS.....	708	1,707
1542 MANUFACTURE OF SUGER.....	76	134
1543 COCOA, CHOCOLATE & SUGER CONFECTIONERY.....	111	262
1544 MACARONI, NOODLES, COUSCOUS & SIMILAR PRODUCTS.....	22	86
1549 OTHER FOOD PRODUCTS N.E.C.....	1,121	2,699
1551 DISTILLING, RECTIFYING & BLENDING OF SPIRITS.....	19	60
1554 SOFT DRINKS & MINERAL WATERS.....	5	10
1600 TOBACCO PRODUCTS.....	1,981	4,291
1711 PREPARATION & SPINNING OF TEXTILE FIBRES.....	605	7,971
1712 FINISHING OF TEXTILES.....	44	322
1721 MADE-UP TEXTILE ARTICLES, EXCEPT APPAREL.....	58	221
1722 CARPETS & RUGS.....	1,290	1,796
1723 CORDAGE, ROPE, TWINE & NETTING.....	556	2,528
1729 OTHER TEXTILES N.E.C.....	32	571
1730 KNITTED & CROCHETED FABRICS & ARTICLES.....	8	28
1810 WEARING APPAREL, EXCEPT PUR APPAREL.....	1,065	11,690
1912 MANU. OF LEATHER GOODS.....	10	35
1920 FOOTWEAR.....	27	101
2010 SAWMILLING & PLANING OF WOOD.....	488	1,769
2021 VENEER SHEETS, PLYWOOD, LAMINBOARD, PARTICLE BOARD.....	5	19
2022 BUILDERS CARPENTRY & JOINRY.....	608	1,201
2023 WOODEN CONTAINERS.....	30	48
2029 OTHER PRODUCTS OF WOOD.....	1,643	2,812
2101 PULP, PAPER & PAPERBOARD.....	3	41
2102 CORRUGATED PAPER & PAPERBOARD & CONTAINERS.....	22	44
2109 OTHER ARTICLES OF PAPER & PAPERBOARD.....	70	310
2219 OTHER PUBLISHING.....	9	18
2310 COKE OVEN PRODUCTS.....	4	13
2422 PAINTS, VARNISHES & SIMILAR COATINGS, PRINTING INK.....	5	14
2423 PHARMACEUTICALS, MEDICINAL CHEMICALS & BOTANICAL.....	24	118
2424 SOAP, CLEANING & POLISHING PREPARATIONS, PERFUMES.....	8	38
2429 OTHER CHEMICAL PRODUCTS N.E.C.....	87	337
2430 MAN-MADE FIBRES.....	8	19
2519 OTHER RUBBER PRODUCTS.....	79	596
2520 PLASTIC PRODUCTS.....	152	431

(continued)

\* - MINING &amp; QUARRYING AND MANUFACTURING

\*\* - ISIC REVISION 03



TABLE 7:NO.OF ESTABLISHMENT\* & PERSONS ENGAGED BY INDUSTRY GROUP\*\* (ISIC 4 DIGIT LEVEL)  
KURUNEGALA DISTRICT - RURAL SECTOR - 1995

INDUSTRY GROUP	NO.OF ESTABLISHMENTS	PERSONS ENGAGED
2610 GLASS & GLASS PRODUCTS.....	33	110
2691 NON-STRUCTURAL NON- REFRACTORY CERAMIC WARE.....	610	1,342
2692 REFRACTORY CERAMIC PRODUCTS.....	727	1,811
2693 STRUCTURAL NONO-REFRACTORY CLAY & CERAMIC PRODUCTS.....	2,133	7,384
2694 CEMENT, LIME & PLASTER.....	88	351
2695 ARTICALS OF CONCRETE, CEMENT & PLASTER.....	199	534
2696 CUTTING, SHAPING & FINISHING OF STONE.....	118	585
2699 OTHER NON-METALIC MINERAL PRODUCTS N.B.C.....	5	11
2710 BASIC IRON & STEEL.....	28	59
2720 BASIC PRECIOUS & NON-FERROUS METAL.....	4	10
2731 CASTING OF IRON & STEEL.....	19	31
2732 CASTING OF NON-FERROUS METALS.....	3	12
2811 STRUCTURAL METAL PRODUCTS.....	195	459
2812 TANKS, RESERVOIRS & CONTAINERS OF METAL.....	7	33
2892 TREATMENT & COATING OF METALS.....	4	11
2893 CUTLERY, HAND TOOLS & GENERAL HARDWARE.....	302	478
2899 OTHER FABRICATED METAL PRODUCTS.....	83	193
2911 ENGINES & TURBINES, EXCEPT AIRCRAFT, VEHICLE ENGINE.....	3	5
2914 OVENS, FURNACES & FURNACE BURNERS.....	3	18
2921 AGRICULTURAL & FORESTY MACHINERY.....	49	127
2922 MACHINE-TOOLS.....	4	5
2923 MACHINERY FOR METALLURGY.....	4	5
2924 MACHINERY FOR MINING, QUARRYING & CONSTRUCTION.....	5	25
2925 MACHINERY FOR FOOD, BEVERAGE & TOBACCO PROCESSING.....	6	19
2927 WEAPONS & AMMUNITION.....	7	17
3110 ELECTRIC MOTORS, GENERATORS & TRANSFORMERS.....	4	11
3210 ELECTRONIC VALVES & TUBES & OTHER ELECTRONIC COMPONENTS..	4	43
3230 TELEVISION & RADIO RECEIVERS, SOUND OR VIDEO RECORDING....	4	7
3320 OPTICAL INSTRUMENTS & PHOTOGRAPHIC EQUIPMENTS.....	3	8
3410 MOTOR VEHICLES.....	10	27
3420 BODIES(COACHWORK) FOR MOTOR VEHICLES.....	17	93
3430 PARTS & ACCESSORIES FOR MOTOR VEHICLES & THEIR ENGINES...	8	19
3591 MOTORCYCLES.....	11	19
3592 BICYCLES & INVALID CARRIAGES.....	8	13
3610 FURNITURE.....	1,076	2,217
3691 JEWELLERY & RELATED ARTICLES.....	154	514
3692 MUSICAL INSTRUMENTS.....	6	11
3694 GAMES & TOYS.....	4	8
3699 OTHER MANUFACTURING N.B.C.....	456	1,106
3720 RECYCLING OF NON-METAL WASTE & SCRAP.....	160	659
9999 OTHER PRODUCT.....	23	242
TOTAL.....	22,762	77,760

\* - MINING & QUARRYING AND MANUFACTURING

\*\* - ISIC REVISION 03

TABLE 8: NO. OF ESTABLISHMENT\* & PERSONS ENGAGED BY DIVISIONAL SECRETARY DIVISION & MAJOR INDUSTRY DIVISION\*\* (ISIC 1 DIGIT LEVEL)  
KURUNEGALA DISTRICT - RURAL SECTOR - 1995

D.S. DIVISION & MAJOR INDUSTRY DIVISION	NO. OF ESTABLISHMENTS	PERSONS ENGAGED
<b>ALAWWA</b>		
C MINING & QUARRYING.....	63	178
D MANUFACTURING.....	2,062	4,841
<b>BINGIRIYA</b>		
C MINING & QUARRYING.....	22	133
D MANUFACTURING.....	981	2,958
<b>GALGANUWA</b>		
C MINING & QUARRYING.....	37	113
D MANUFACTURING.....	903	1,594
<b>GANEWATTA</b>		
C MINING & QUARRYING.....	5	16
D MANUFACTURING.....	381	1,302
<b>GIRIBAWA</b>		
C MINING & QUARRYING.....	10	37
D MANUFACTURING.....	364	523
<b>IBBAGANUWA</b>		
C MINING & QUARRYING.....	36	170
D MANUFACTURING.....	954	3,924
<b>KATUPOTHA</b>		
C MINING & QUARRYING.....	22	122
D MANUFACTURING.....	962	2,488
<b>KOBEIGANE</b>		
C MINING & QUARRYING.....	4	39
D MANUFACTURING.....	446	1,116
<b>KOTAWEHHERA</b>		
C MINING & QUARRYING.....	3	20
D MANUFACTURING.....	228	370
<b>KULIYAPITIYA WEST</b>		
C MINING & QUARRYING.....	55	247
D MANUFACTURING.....	1,051	3,782
<b>KULIYAPITIYA EAST</b>		
C MINING & QUARRYING.....	30	99
D MANUFACTURING.....	590	1,762
<b>KURUNEGALA</b>		
C MINING & QUARRYING.....	43	219
D MANUFACTURING.....	492	2,295
<b>MAHAWA</b>		
C MINING & QUARRYING.....	31	163
D MANUFACTURING.....	733	1,719
<b>MALLAWAPITIYA</b>		
C MINING & QUARRYING.....	51	183
D MANUFACTURING.....	664	1,796
<b>MASPOTHA</b>		
C MINING & QUARRYING.....	31	197
D MANUFACTURING.....	535	1,930
<b>MAWATHAGAMA</b>		
C MINING & QUARRYING.....	46	179
D MANUFACTURING.....	725	2,645

\* - MINING &amp; QUARRYING AND MANUFACTURING

\*\* - ISIC REVISION 03

(continued)

TABLE 8: NO. OF ESTABLISHMENT\* & PERSONS ENGAGED BY DIVISIONAL SECRETARY DIVISION & MAJOR INDUSTRY DIVISION\*\* (ISIC 1 DIGIT LEVEL)  
KURUNEGALA DISTRICT - RURAL SECTOR - 1995

D.S. DIVISION & MAJOR INDUSTRY DIVISION	NO. OF ESTABLISHMENTS	PERSONS ENGAGED
<b>NARAMMALA</b>		
C MINING & QUARRYING.....	35	147
D MANUFACTURING.....	815	2,684
<b>NIKAWERATIYA</b>		
C MINING & QUARRYING.....	16	74
D MANUFACTURING.....	425	1,396
<b>PANDUWASNUMARA</b>		
C MINING & QUARRYING.....	27	132
D MANUFACTURING.....	1,200	4,067
<b>PANNALA</b>		
C MINING & QUARRYING.....	21	116
D MANUFACTURING.....	3,040	16,882
<b>POLGAHAWELA</b>		
C MINING & QUARRYING.....	44	215
D MANUFACTURING.....	566	1,888
<b>POLPITHIGAMA</b>		
C MINING & QUARRYING.....	30	114
D MANUFACTURING.....	731	1,770
<b>RASHAYAKAPURA</b>		
C MINING & QUARRYING.....	54	147
D MANUFACTURING.....	268	504
<b>RIDDEGAMA</b>		
C MINING & QUARRYING.....	38	275
D MANUFACTURING.....	1,121	4,083
<b>UDUBADDAWA</b>		
C MINING & QUARRYING.....	35	128
D MANUFACTURING.....	745	2,822
<b>WARIYAPOLA</b>		
C MINING & QUARRYING.....	38	185
D MANUFACTURING.....	508	1,553
<b>WEBRAMBUGEDARA</b>		
C MINING & QUARRYING.....	15	38
D MANUFACTURING.....	430	1,380
<b>TOTAL.....</b>	<b>22,762</b>	<b>77,760</b>

\* - MINING & QUARRYING AND MANUFACTURING

\*\* - ISIC REVISION 03

TABLE 9: NO. OF ESTABLISHMENT\* & PERSONS ENGAGED BY DIVISIONAL SECRETARY DIVISION & INDUSTRY DIVISION\*\* (ISIC 2 DIGIT LEVEL)  
KURUNEGALA DISTRICT - RURAL SECTOR - 1995

D.S. DIVISION & INDUSTRY DIVISION	NO. OF ESTABLISHMENTS	PERSONS ENGAGED
<b>ALAWWA</b>		
14 OTHER MINING & QUARRYING.....	63	178
15 FOOD PRODUCTS & BEVERAGES.....	198	400
16 TOBACCO PRODUCTS.....	442	543
17 TEXTILES.....	765	1,046
18 WEARING APPEREL DRESSING & DYING OF FUR.....	58	1,600
19 TRAINING & DRESSING OF LEATHER, LEATHER GOODS & FOOTWEAR.	4	14
20 WOOD & WOOD PRODUCTS, EXCEPT FURNITURE.....	63	134
21 PAPER & PAPER PRODUCTS.....	7	22
24 CHEMICALS & CHEMICAL PRODUCTS.....	4	17
25 RUBBER & PLASTICS PRODUCTS.....	139	192
26 OTHER NON-METALIC MINERAL PRODUCTS.....	133	378
28 FABRICATED METAL PRODUCTS, EXCEPT MACHINERY & EQUIPMENT...	34	84
36 MANU. OF FURNITURE, MANUFACTURING N.B.C.....	215	411
<b>BINGIRIYA</b>		
14 OTHER MINING & QUARRYING.....	22	133
15 FOOD PRODUCTS & BEVERAGES.....	325	755
17 TEXTILES.....	119	770
18 WEARING APPEREL DRESSING & DYING OF FUR.....	22	34
20 WOOD & WOOD PRODUCTS, EXCEPT FURNITURE.....	204	506
24 CHEMICALS & CHEMICAL PRODUCTS.....	4	10
25 RUBBER & PLASTICS PRODUCTS.....	5	23
26 OTHER NON-METALIC MINERAL PRODUCTS.....	189	537
27 BASIC METAL INDUSTRIES.....	5	8
28 FABRICATED METAL PRODUCTS, EXCEPT MACHINERY & EQUIPMENT...	18	34
36 MANU. OF FURNITURE, MANUFACTURING N.B.C.....	14	26
37 RECYCLING.....	71	189
99 OTHER PRODUCT.....	5	66
<b>GALGANUWA</b>		
14 OTHER MINING & QUARRYING.....	37	113
15 FOOD PRODUCTS & BEVERAGES.....	282	475
16 TOBACCO PRODUCTS.....	5	6
17 TEXTILES.....	54	124
18 WEARING APPEREL DRESSING & DYING OF FUR.....	64	194
19 TRAINING & DRESSING OF LEATHER, LEATHER GOODS & FOOTWEAR.	4	10
20 WOOD & WOOD PRODUCTS, EXCEPT FURNITURE.....	110	153
21 PAPER & PAPER PRODUCTS.....	3	4
24 CHEMICALS & CHEMICAL PRODUCTS.....	4	7
26 OTHER NON-METALIC MINERAL PRODUCTS.....	130	218
27 BASIC METAL INDUSTRIES.....	3	9
28 FABRICATED METAL PRODUCTS, EXCEPT MACHINERY & EQUIPMENT...	22	35

(continued)

\* - MINING &amp; QUARRYING AND MANUFACTURING

\*\* - ISIC REVISION 03

TABLE 9: NO. OF ESTABLISHMENT\* & PERSONS ENGAGED BY DIVISIONAL SECRETARY DIVISION & INDUSTRY DIVISION\*\* (ISIC 2 DIGIT LEVEL)  
KURUNBGALA DISTRICT - RURAL SECTOR - 1995

D.S. DIVISION & INDUSTRY DIVISION	NO. OF ESTABLISHMENTS	PERSONS ENGAGED
29 MACHINERY & EQUIPMENT N.E.C.....	16	28
36 MANU. OF FURNITURE, MANUFACTURING N.E.C.....	201	325
99 OTHER PRODUCT.....	5	6
<b>GANEWATTA</b>		
14 OTHER MINING & QUARRYING.....	5	16
15 FOOD PRODUCTS & BEVERAGES.....	109	260
16 TOBACCO PRODUCTS.....	9	18
17 TEXTILES.....	36	101
18 WEARING APPEREL DRESSING & DYING OF PUR.....	14	388
20 WOOD & WOOD PRODUCTS, EXCEPT FURNITURE.....	58	110
24 CHEMICALS & CHEMICAL PRODUCTS.....	5	8
26 OTHER NON-METALIC MINERAL PRODUCTS.....	119	361
28 FABRICATED METAL PRODUCTS, EXCEPT MACHINERY & EQUIPMENT...	16	30
34 MOTOR VEHICLES, TRAILERS & SEMI-TRAILERS.....	4	10
36 MANU. OF FURNITURE, MANUFACTURING N.E.C.....	11	16
<b>GIRIBAWA</b>		
14 OTHER MINING & QUARRYING.....	10	37
15 FOOD PRODUCTS & BEVERAGES.....	145	209
16 TOBACCO PRODUCTS.....	15	33
17 TEXTILES.....	11	17
18 WEARING APPEREL DRESSING & DYING OF PUR.....	40	52
20 WOOD & WOOD PRODUCTS, EXCEPT FURNITURE.....	123	169
26 OTHER NON-METALIC MINERAL PRODUCTS.....	8	11
28 FABRICATED METAL PRODUCTS, EXCEPT MACHINERY & EQUIPMENT...	15	21
36 MANU. OF FURNITURE, MANUFACTURING N.E.C.....	7	11
<b>IBBAGANUWA</b>		
14 OTHER MINING & QUARRYING.....	36	170
15 FOOD PRODUCTS & BEVERAGES.....	447	920
16 TOBACCO PRODUCTS.....	75	768
17 TEXTILES.....	97	272
18 WEARING APPEREL DRESSING & DYING OF PUR.....	86	1,221
20 WOOD & WOOD PRODUCTS, EXCEPT FURNITURE.....	83	155
21 PAPER & PAPER PRODUCTS.....	3	3
24 CHEMICALS & CHEMICAL PRODUCTS.....	6	8
26 OTHER NON-METALIC MINERAL PRODUCTS.....	91	448
28 FABRICATED METAL PRODUCTS, EXCEPT MACHINERY & EQUIPMENT...	24	45
36 MANU. OF FURNITURE, MANUFACTURING N.E.C.....	42	84

(continued)

\* - MINING &amp; QUARRYING AND MANUFACTURING

\*\* - ISIC REVISION 03



TABLE 9: NO. OF ESTABLISHMENT\* & PERSONS ENGAED BY DIVISIONAL SECRETARY DIVISION & INDUSTRY DIVISION\*\* (ISIC 2 DIGIT LEVEL)  
KURUNEGALA DISTRICT - RURAL SECTOR - 1995

D.S.DIVISION & INDUSTRY DIVISION	NO. OF ESTABLISHMENTS	PERSONS ENGAGED
<b>KATUPOTHA</b>		
14 OTHER MINING & QUARRYING.....	22	122
15 FOOD PRODUCTS & BEVERAGES.....	133	281
16 TOBACCO PRODUCTS.....	72	93
17 TEXTILES.....	65	751
18 WEARING APPHREL DRESSING & DYING OF FUR.....	28	33
20 WOOD & WOOD PRODUCTS, EXCEPT FURNITURE.....	211	345
21 PAPER & PAPER PRODUCTS.....	5	8
24 CHEMICALS & CHEMICAL PRODUCTS.....	3	3
26 OTHER NON-METALIC MINERAL PRODUCTS.....	336	757
28 FABRICATED METAL PRODUCTS, EXCEPT MACHINERY & EQUIPMENT...	11	16
35 OTHER TRANSPORT EQUIPMENT.....	3	4
36 MANU. OF FURNITURE, MANUFACTURING N.E.C.....	89	167
99 OTHER PRODUCT.....	6	30
<b>KOBBIGANE</b>		
14 OTHER MINING & QUARRYING.....	4	39
15 FOOD PRODUCTS & BEVERAGES.....	103	284
16 TOBACCO PRODUCTS.....	9	11
17 TEXTILES.....	48	232
18 WEARING APPHREL DRESSING & DYING OF FUR.....	19	34
20 WOOD & WOOD PRODUCTS, EXCEPT FURNITURE.....	83	161
26 OTHER NON-METALIC MINERAL PRODUCTS.....	42	123
28 FABRICATED METAL PRODUCTS, EXCEPT MACHINERY & EQUIPMENT...	22	50
29 MACHINERY & EQUIPMENT N.E.C.....	14	47
34 MOTOR VEHICLES, TRAILERS & SEMI-TRAILERS.....	6	17
35 OTHER TRANSPORT EQUIPMENT.....	5	5
36 MANU. OF FURNITURE, MANUFACTURING N.E.C.....	44	66
37 RECYCLING.....	47	76
99 OTHER PRODUCT.....	4	10
<b>KOTAWEHHERA</b>		
14 OTHER MINING & QUARRYING.....	3	20
15 FOOD PRODUCTS & BEVERAGES.....	124	198
17 TEXTILES.....	3	10
18 WEARING APPHREL DRESSING & DYING OF FUR.....	5	7
20 WOOD & WOOD PRODUCTS, EXCEPT FURNITURE.....	72	113
26 OTHER NON-METALIC MINERAL PRODUCTS.....	8	14
28 FABRICATED METAL PRODUCTS, EXCEPT MACHINERY & EQUIPMENT...	3	5
29 MACHINERY & EQUIPMENT N.E.C.....	8	15
36 MANU. OF FURNITURE, MANUFACTURING N.E.C.....	5	8

(continued)

\* - MINING &amp; QUARRYING AND MANUFACTURING

\*\* - ISIC REVISION 03

TABLE 9: NO. OF ESTABLISHMENT\* & PERSONS ENGAGED BY DIVISIONAL SECRETARY DIVISION &  
INDUSTRY DIVISION\*\* (ISIC 2 DIGIT LEVEL)  
KURUNEGALA DISTRICT - RURAL SECTOR - 1995

D.S. DIVISION & INDUSTRY DIVISION	NO. OF ESTABLISHMENTS	PERSONS ENGAGED
<b>KULIYAPITIYA WEST</b>		
14 OTHER MINING & QUARRYING.....	55	247
15 FOOD PRODUCTS & BEVERAGES.....	464	2,112
16 TOBACCO PRODUCTS.....	29	36
17 TEXTILES.....	70	501
18 WEARING APPEREL DRESSING & DYING OF FUR.....	71	107
19 TRAINING & DRESSING OF LEATHER, LEATHER GOODS & FOOTWEAR.	4	19
20 WOOD & WOOD PRODUCTS, EXCEPT FURNITURE.....	150	317
24 CHEMICALS & CHEMICAL PRODUCTS.....	4	11
26 OTHER NON-METALIC MINERAL PRODUCTS.....	181	527
28 FABRICATED METAL PRODUCTS, EXCEPT MACHINERY & EQUIPMENT...	30	56
36 MANU. OF FURNITURE, MANUFACTURING N.E.C.....	37	75
37 RECYCLING.....	4	7
99 OTHER PRODUCT.....	7	14
<b>KULIYAPITIYA EAST</b>		
14 OTHER MINING & QUARRYING.....	30	99
15 FOOD PRODUCTS & BEVERAGES.....	174	385
16 TOBACCO PRODUCTS.....	111	130
17 TEXTILES.....	77	426
18 WEARING APPEREL DRESSING & DYING OF FUR.....	17	243
20 WOOD & WOOD PRODUCTS, EXCEPT FURNITURE.....	105	342
21 PAPER & PAPER PRODUCTS.....	3	6
26 OTHER NON-METALIC MINERAL PRODUCTS.....	43	106
27 BASIC METAL INDUSTRIES.....	4	10
28 FABRICATED METAL PRODUCTS, EXCEPT MACHINERY & EQUIPMENT...	14	23
29 MACHINERY & EQUIPMENT N.E.C.....	5	9
36 MANU. OF FURNITURE, MANUFACTURING N.E.C.....	37	82
<b>KURUNEGALA</b>		
14 OTHER MINING & QUARRYING.....	43	219
15 FOOD PRODUCTS & BEVERAGES.....	153	461
16 TOBACCO PRODUCTS.....	20	97
17 TEXTILES.....	58	330
18 WEARING APPEREL DRESSING & DYING OF FUR.....	27	546
20 WOOD & WOOD PRODUCTS, EXCEPT FURNITURE.....	54	138
21 PAPER & PAPER PRODUCTS.....	5	11
24 CHEMICALS & CHEMICAL PRODUCTS.....	10	40

(continued)

\* - MINING &amp; QUARRYING AND MANUFACTURING

\*\* - ISIC REVISION 03

TABLE 9: NO. OF ESTABLISHMENT\* & PERSONS ENGAGED BY DIVISIONAL SECRETARY DIVISION & INDUSTRY DIVISION\*\* (ISIC 2 DIGIT LEVEL)  
KURUNEGALA DISTRICT - RURAL SECTOR - 1995

D.S. DIVISION & INDUSTRY DIVISION	NO. OF ESTABLISHMENTS	PERSONS ENGAGED
25 RUBBER & PLASTICS PRODUCTS.....	5	158
26 OTHER NON-METALIC MINERAL PRODUCTS.....	94	211
28 FABRICATED METAL PRODUCTS, EXCEPT MACHINERY & EQUIPMENT...	29	83
29 MACHINERY & EQUIPMENT N.E.C.....	7	34
34 MOTOR VEHICLES, TRAILERS & SEMI-TRAILERS.....	3	18
36 MANU. OF FURNITURE, MANUFACTURING N.E.C.....	20	45
99 OTHER PRODUCT.....	7	123
<b>MAHAWA</b>		
14 OTHER MINING & QUARRYING.....	31	163
15 FOOD PRODUCTS & BEVERAGES.....	285	531
16 TOBACCO PRODUCTS.....	4	8
17 TEXTILES.....	16	40
18 WEARING APPEREL DRESSING & DYING OF FUR.....	56	359
20 WOOD & WOOD PRODUCTS, EXCEPT FURNITURE.....	74	172
26 OTHER NON-METALIC MINERAL PRODUCTS.....	56	141
28 FABRICATED METAL PRODUCTS, EXCEPT MACHINERY & EQUIPMENT...	42	72
36 MANU. OF FURNITURE, MANUFACTURING N.E.C.....	192	358
99 OTHER PRODUCT.....	8	38
<b>MALLAWAPITIYA</b>		
14 OTHER MINING & QUARRYING.....	51	183
15 FOOD PRODUCTS & BEVERAGES.....	183	550
16 TOBACCO PRODUCTS.....	270	442
17 TEXTILES.....	35	334
18 WEARING APPEREL DRESSING & DYING OF FUR.....	12	29
19 TRAINING & DRESSING OF LEATHER, LEATHER GOODS & FOOTWEAR.	5	23
20 WOOD & WOOD PRODUCTS, EXCEPT FURNITURE.....	79	161
24 CHEMICALS & CHEMICAL PRODUCTS.....	3	11
25 RUBBER & PLASTICS PRODUCTS.....	6	9
26 OTHER NON-METALIC MINERAL PRODUCTS.....	13	38
28 FABRICATED METAL PRODUCTS, EXCEPT MACHINERY & EQUIPMENT...	23	43
36 MANU. OF FURNITURE, MANUFACTURING N.E.C.....	35	156
<b>MASPOTHA</b>		
14 OTHER MINING & QUARRYING.....	31	197
15 FOOD PRODUCTS & BEVERAGES.....	87	332
16 TOBACCO PRODUCTS.....	52	102
17 TEXTILES.....	81	458
18 WEARING APPEREL DRESSING & DYING OF FUR.....	21	45
20 WOOD & WOOD PRODUCTS, EXCEPT FURNITURE.....	66	180

(continued)

\* - MINING &amp; QUARRYING AND MANUFACTURING

\*\* - ISIC REVISION 03

TABLE 9:NO.OF ESTABLISHMENT\* & PERSONS ENGAGED BY DIVISIONAL SECRETARY DIVISION &  
INDUSTRY DIVISION\*\* (ISIC 2 DIGIT LEVEL)  
KURUNEGALA DISTRICT - RURAL SECTOR - 1995

D.S.DIVISION & INDUSTRY DIVISION	NO.OF ESTABLISHMENTS	PERSONS ENGAGED
21 PAPER & PAPER PRODUCTS.....	22	50
24 CHEMICALS & CHEMICAL PRODUCTS.....	3	8
26 OTHER NON-METALIC MINERAL PRODUCTS.....	149	404
27 BASIC METAL INDUSTRIES.....	12	32
28 FABRICATED METAL PRODUCTS, EXCEPT MACHINERY & EQUIPMENT...	13	18
32 RADIO, TELEVISION & COMMUNICATION EQUIPMENT & APPARATUS....	3	41
34 MOTOR VEHICLES, TRAILERS & SEMI-TRAILERS.....	3	12
36 MANU.OF FURNITURE, MANUFACTURING N.E.C.....	23	248
<b>MAWATHAGAMA</b>		
14 OTHER MINING & QUARRYING.....	46	179
15 FOOD PRODUCTS & BEVERAGES.....	224	494
16 TOBACCO PRODUCTS.....	118	186
17 TEXTILES.....	64	359
18 WEARING APPEREL DRESSING & DYING OF FUR.....	38	623
20 WOOD & WOOD PRODUCTS, EXCEPT FURNITURE.....	16	55
21 PAPER & PAPER PRODUCTS.....	4	6
24 CHEMICALS & CHEMICAL PRODUCTS.....	4	7
25 RUBBER & PLASTICS PRODUCTS.....	21	72
26 OTHER NON-METALIC MINERAL PRODUCTS.....	85	324
28 FABRICATED METAL PRODUCTS, EXCEPT MACHINERY & EQUIPMENT...	17	28
36 MANU.OF FURNITURE, MANUFACTURING N.E.C.....	134	491
<b>NARAMMALA</b>		
14 OTHER MINING & QUARRYING.....	35	147
15 FOOD PRODUCTS & BEVERAGES.....	140	916
16 TOBACCO PRODUCTS.....	43	63
17 TEXTILES.....	305	527
18 WEARING APPEREL DRESSING & DYING OF FUR.....	27	79
20 WOOD & WOOD PRODUCTS, EXCEPT FURNITURE.....	108	329
22 PUBLISHING, PRINTING & REPRODUCTION OF RECORDED MEDIA.....	3	6
24 CHEMICALS & CHEMICAL PRODUCTS.....	10	159
25 RUBBER & PLASTICS PRODUCTS.....	17	73
26 OTHER NON-METALIC MINERAL PRODUCTS.....	108	256
28 FABRICATED METAL PRODUCTS, EXCEPT MACHINERY & EQUIPMENT...	11	22
29 MACHINERY & EQUIPMENT N.E.C.....	13	34
36 MANU.OF FURNITURE, MANUFACTURING N.E.C.....	20	43
37 RECYCLING.....	4	137
99 OTHER PRODUCT.....	6	40

(continued)

\* - MINING &amp; QUARRYING AND MANUFACTURING

\*\* - ISIC REVISION 03

TABLE 9: NO. OF ESTABLISHMENT\* & PERSONS ENGAGED BY DIVISIONAL SECRETARY DIVISION & INDUSTRY DIVISION\*\* (ISIC 2 DIGIT LEVEL)  
KURUNEGALA DISTRICT - RURAL SECTOR - 1995

D.S. DIVISION & INDUSTRY DIVISION	NO. OF ESTABLISHMENTS	PERSONS ENGAGED
<b>NIKAWERATIYA</b>		
14 OTHER MINING & QUARRYING.....	16	74
15 FOOD PRODUCTS & BEVERAGES.....	167	385
18 WEARING APPERBL DRESSING & DYING OF FUR.....	27	508
20 WOOD & WOOD PRODUCTS, EXCEPT FURNITURE.....	99	178
21 PAPER & PAPER PRODUCTS.....	9	13
24 CHEMICALS & CHEMICAL PRODUCTS.....	9	20
26 OTHER NON-METALIC MINERAL PRODUCTS.....	67	154
28 FABRICATED METAL PRODUCTS, EXCEPT MACHINERY & EQUIPMENT...	34	82
36 MANU. OF FURNITURE, MANUFACTURING N.E.C.....	13	56
<b>PANDUWASNUWARA</b>		
14 OTHER MINING & QUARRYING.....	27	132
15 FOOD PRODUCTS & BEVERAGES.....	431	1,421
16 TOBACCO PRODUCTS.....	5	19
17 TEXTILES.....	82	915
18 WEARING APPERBL DRESSING & DYING OF FUR.....	46	340
20 WOOD & WOOD PRODUCTS, EXCEPT FURNITURE.....	310	569
24 CHEMICALS & CHEMICAL PRODUCTS.....	7	21
26 OTHER NON-METALIC MINERAL PRODUCTS.....	253	548
28 FABRICATED METAL PRODUCTS, EXCEPT MACHINERY & EQUIPMENT...	29	67
29 MACHINERY & EQUIPMENT N.E.C.....	3	7
36 MANU. OF FURNITURE, MANUFACTURING N.E.C.....	23	68
37 RECYCLING.....	11	92
<b>PANNALA</b>		
14 OTHER MINING & QUARRYING.....	21	116
15 FOOD PRODUCTS & BEVERAGES.....	888	3,645
16 TOBACCO PRODUCTS.....	162	219
17 TEXTILES.....	265	4,608
18 WEARING APPERBL DRESSING & DYING OF FUR.....	99	2,155
20 WOOD & WOOD PRODUCTS, EXCEPT FURNITURE.....	117	293
21 PAPER & PAPER PRODUCTS.....	14	230
24 CHEMICALS & CHEMICAL PRODUCTS.....	25	130
25 RUBBER & PLASTICS PRODUCTS.....	6	24
26 OTHER NON-METALIC MINERAL PRODUCTS.....	1,175	4,889
27 BASIC METAL INDUSTRIES.....	16	24
28 FABRICATED METAL PRODUCTS, EXCEPT MACHINERY & EQUIPMENT...	51	115
29 MACHINERY & EQUIPMENT N.E.C.....	3	11
35 OTHER TRANSPORT EQUIPMENT.....	8	16
36 MANU. OF FURNITURE, MANUFACTURING N.E.C.....	205	455
37 RECYCLING.....	6	68

(continued)

\* - MINING &amp; QUARRYING AND MANUFACTURING

\*\* - ISIC REVISION 03



TABLE 9:NO.OF ESTABLISHMENT\* & PERSONS ENGAED BY DIVISIONAL SECRETARY DIVISION &  
INDUSTRY DIVISION\*\* (ISIC 2 DIGIT LEVEL)  
KURUNEGALA DISTRICT - RURAL SECTOR - 1995

D.S.DIVISION & INDUSTRY DIVISION	NO.OF ESTABLISHMENTS	PERSONS ENGAGED
<b>POLGAHAWELA</b>		
14 OTHER MINING & QUARRYING.....	44	215
15 FOOD PRODUCTS & BEVERAGES.....	148	332
16 TOBACCO PRODUCTS.....	49	62
17 TEXTILES.....	92	228
18 WEARING APPEREL DRESSING & DYEING OF FUR.....	57	548
20 WOOD & WOOD PRODUCTS, EXCEPT FURNITURE.....	82	225
25 RUBBER & PLASTICS PRODUCTS.....	9	196
26 OTHER NON-METALIC MINERAL PRODUCTS.....	52	138
28 FABRICATED METAL PRODUCTS,EXCEPT MACHINERY & EQUIPMENT...	27	44
34 MOTOR VEHICLES,TRAILERS & SEMI-TRAILERS.....	5	10
36 MANU.OF FURNITURE, MANUFACTURING N.E.C.....	34	74
99 OTHER PRODUCT.....	11	31
<b>POLPITHIGAMA</b>		
14 OTHER MINING & QUARRYING.....	30	114
15 FOOD PRODUCTS & BEVERAGES.....	307	493
16 TOBACCO PRODUCTS.....	51	75
17 TEXTILES.....	32	67
18 WEARING APPEREL DRESSING & DYEING OF FUR.....	56	651
20 WOOD & WOOD PRODUCTS, EXCEPT FURNITURE.....	185	274
21 PAPER & PAPER PRODUCTS.....	4	11
24 CHEMICALS & CHEMICAL PRODUCTS.....	5	8
25 RUBBER & PLASTICS PRODUCTS.....	3	6
26 OTHER NON-METALIC MINERAL PRODUCTS.....	38	98
28 FABRICATED METAL PRODUCTS,EXCEPT MACHINERY & EQUIPMENT...	22	46
29 MACHINERY & EQUIPMENT N.E.C.....	5	13
36 MANU.OF FURNITURE, MANUFACTURING N.E.C.....	21	26
99 OTHER PRODUCT.....	2	2
<b>RASNAYAKAPURA</b>		
14 OTHER MINING & QUARRYING.....	54	147
15 FOOD PRODUCTS & BEVERAGES.....	101	230
16 TOBACCO PRODUCTS.....	8	9
17 TEXTILES.....	22	33
20 WOOD & WOOD PRODUCTS, EXCEPT FURNITURE.....	26	46
24 CHEMICALS & CHEMICAL PRODUCTS.....	3	6
26 OTHER NON-METALIC MINERAL PRODUCTS.....	45	80
28 FABRICATED METAL PRODUCTS,EXCEPT MACHINERY & EQUIPMENT...	5	9
29 MACHINERY & EQUIPMENT N.E.C.....	3	18
36 MANU.OF FURNITURE, MANUFACTURING N.E.C.....	55	73

(continued)

\* - MINING &amp; QUARRYING AND MANUFACTURING

\*\* - ISIC REVISION 03

TABLE 9: NO. OF ESTABLISHMENT\* & PERSONS ENGAGED BY DIVISIONAL SECRETARY DIVISION & INDUSTRY DIVISION\*\* (ISIC 2 DIGIT LEVEL)  
KURUNEGALA DISTRICT - RURAL SECTOR - 1995

D.S. DIVISION & INDUSTRY DIVISION	NO. OF ESTABLISHMENTS	PERSONS ENGAGED
<b>RIDDEGAMA</b>		
14 OTHER MINING & QUARRYING.....	38	275
15 FOOD PRODUCTS & BEVERAGES.....	291	576
16 TOBACCO PRODUCTS.....	395	1,250
17 TEXTILES.....	47	142
18 WEARING APPEREL DRESSING & DYING OF FUR.....	60	1,163
20 WOOD & WOOD PRODUCTS, EXCEPT FURNITURE.....	50	147
24 CHEMICALS & CHEMICAL PRODUCTS.....	7	17
25 RUBBER & PLASTICS PRODUCTS.....	9	62
26 OTHER NON-METALIC MINERAL PRODUCTS.....	134	481
27 BASIC METAL INDUSTRIES.....	4	7
28 FABRICATED METAL PRODUCTS, EXCEPT MACHINERY & EQUIPMENT...	22	38
36 MANU. OF FURNITURE, MANUFACTURING N.B.C.....	102	200
<b>UDUBADDAWA</b>		
14 OTHER MINING & QUARRYING.....	35	128
15 FOOD PRODUCTS & BEVERAGES.....	213	828
17 TEXTILES.....	69	778
18 WEARING APPEREL DRESSING & DYING OF FUR.....	54	90
20 WOOD & WOOD PRODUCTS, EXCEPT FURNITURE.....	59	145
21 PAPER & PAPER PRODUCTS.....	3	12
24 CHEMICALS & CHEMICAL PRODUCTS.....	12	28
26 OTHER NON-METALIC MINERAL PRODUCTS.....	225	679
28 FABRICATED METAL PRODUCTS, EXCEPT MACHINERY & EQUIPMENT...	26	53
36 MANU. OF FURNITURE, MANUFACTURING N.B.C.....	68	120
37 RECYCLING.....	16	89
<b>WARIYAPOLA</b>		
14 OTHER MINING & QUARRYING.....	38	185
15 FOOD PRODUCTS & BEVERAGES.....	168	338
16 TOBACCO PRODUCTS.....	10	70
17 TEXTILES.....	43	269
18 WEARING APPEREL DRESSING & DYING OF FUR.....	52	233
20 WOOD & WOOD PRODUCTS, EXCEPT FURNITURE.....	119	243
26 OTHER NON-METALIC MINERAL PRODUCTS.....	48	166
28 FABRICATED METAL PRODUCTS, EXCEPT MACHINERY & EQUIPMENT...	34	68
36 MANU. OF FURNITURE, MANUFACTURING N.B.C.....	24	131
99 OTHER PRODUCT.....	10	35

(continued)

\* - MINING &amp; QUARRYING AND MANUFACTURING

\*\* - ISIC REVISION 03

TABLE 9: NO. OF ESTABLISHMENT\* & PERSONS ENGAGED BY DIVISIONAL SECRETARY DIVISION & INDUSTRY DIVISION\*\* (ISIC 2 DIGIT LEVEL)  
KURUNEGALA DISTRICT - RURAL SECTOR - 1995

D.S. DIVISION & INDUSTRY DIVISION	NO. OF ESTABLISHMENTS	PERSONS ENGAGED
<b>VEERAMBUGEDARA</b>		
14 OTHER MINING & QUARRYING.....	15	38
15 FOOD PRODUCTS & BEVERAGES.....	123	250
16 TOBACCO PRODUCTS.....	26	50
17 TEXTILES.....	35	91
18 WEAVER APPAREL DRESSING & DYING OF FUR.....	22	457
20 WOOD & WOOD PRODUCTS, EXCEPT FURNITURE.....	69	190
21 PAPER & PAPER PRODUCTS.....	4	4
24 CHEMICALS & CHEMICAL PRODUCTS.....	6	12
25 RUBBER & PLASTICS PRODUCTS.....	2	2
26 OTHER NON-METALIC MINERAL PRODUCTS.....	98	241
27 BASIC METAL INDUSTRIES.....	4	6
28 FABRICATED METAL PRODUCTS, EXCEPT MACHINERY & EQUIPMENT...	7	9
36 MANU. OF FURNITURE, MANUFACTURING N.E.C.....	28	52
99 OTHER PRODUCT.....	6	16
<b>TOTAL.....</b>	<b>22,762</b>	<b>77,760</b>

\* - MINING & QUARRYING AND MANUFACTURING

\*\* - ISIC REVISION 03

TABLE 10: DISTRIBUTION OF ESTABLISHMENT\* & PERSONS ENGAGED BY DIVISIONAL  
SECRETARY DIVISION & PERSONS ENGAGED SIZE CLASS  
KURUNEGALA DISTRICT - RURAL SECTOR - 1995

D.S.DIVISION & INDUSTRY DIVISION	NO.OF ESTABLISHMENTS
<b>ALAWWA</b>	
<b>14 OTHER MINING &amp; QUARRYING</b>	
1 - 4.....	57
5 - 14.....	6
<b>15 FOOD PRODUCTS &amp; BEVERAGES</b>	
1 - 4.....	183
5 - 14.....	14
15 & ABOVE.....	1
<b>16 TOBACCO PRODUCTS</b>	
1 - 4.....	440
5 - 14.....	1
15 & ABOVE.....	1
<b>17 TEXTILES</b>	
1 - 4.....	755
5 - 14.....	9
15 & ABOVE.....	1
<b>18 WEAVING APPERBEL DRESSING &amp; DYING OF FUR</b>	
1 - 4.....	52
5 - 14.....	2
15 & ABOVE.....	4
<b>19 TRAINING &amp; DRESSING OF LEATHER, LEATHER GOODS &amp; FOOTWEAR</b>	
1 - 4.....	3
5 - 14.....	1
<b>20 WOOD &amp; WOOD PRODUCTS, EXCEPT FURNITURE</b>	
1 - 4.....	57
5 - 14.....	6
<b>21 PAPER &amp; PAPER PRODUCTS</b>	
1 - 4.....	6
5 - 14.....	1
<b>24 CHEMICALS &amp; CHEMICAL PRODUCTS</b>	
1 - 4.....	2
5 - 14.....	2
<b>25 RUBBER &amp; PLASTICS PRODUCTS</b>	
1 - 4.....	137
5 - 14.....	2
<b>26 OTHER NON-METALIC MINERAL PRODUCTS</b>	
1 - 4.....	107
5 - 14.....	26
<b>28 FABRICATED METAL PRODUCTS, EXCEPT MACHINERY &amp; EQUIPMENT</b>	
1 - 4.....	28
5 - 14.....	5
<b>34 MOTOR VEHICLES, TRAILERS &amp; SEMI-TRAILERS</b>	
1 - 4.....	1
<b>36 MANU.OF FURNITURE, MANUFACTURING N.E.C.</b>	
1 - 4.....	199
5 - 14.....	16

(continued)

\* - MINING &amp; QUARRYING AND MANUFACTURING

TABLE 10: DISTRIBUTION OF ESTABLISHMENT\* & PERSONS ENGAGED BY DIVISIONAL  
SECRETARY DIVISION & PERSONS ENGAGED SIZE CLASS  
KURUNEGALA DISTRICT - RURAL SECTOR - 1995

D.S. DIVISION & INDUSTRY DIVISION	NO. OF ESTABLISHMENTS
<b>BINGIRIYA</b>	
<b>14 OTHER MINING &amp; QUARRYING</b>	
1 - 4.....	13
5 - 14.....	7
15 & ABOVE.....	2
<b>15 FOOD PRODUCTS &amp; BEVERAGES</b>	
1 - 4.....	302
5 - 14.....	22
15 & ABOVE.....	1
<b>17 TEXTILES</b>	
1 - 4.....	65
5 - 14.....	41
15 & ABOVE.....	13
<b>18 WEARING APPEREL DRBSSING &amp; DYING OF FUR</b>	
1 - 4.....	21
5 - 14.....	1
<b>19 TRAINING &amp; DRBSSING OF LEATHER, LEATHER GOODS &amp; FOOTWEAR</b>	
1 - 4.....	1
<b>20 WOOD &amp; WOOD PRODUCTS, EXCEPT FURNITURE</b>	
1 - 4.....	191
5 - 14.....	13
<b>21 PAPER &amp; PAPER PRODUCTS</b>	
1 - 4.....	1
<b>24 CHEMICALS &amp; CHEMICAL PRODUCTS</b>	
1 - 4.....	4
<b>25 RUBBER &amp; PLASTICS PRODUCTS</b>	
1 - 4.....	3
5 - 14.....	2
<b>26 OTHER NON-METALIC MINERAL PRODUCTS</b>	
1 - 4.....	172
5 - 14.....	16
15 & ABOVE.....	1
<b>27 BASIC METAL INDUSTRIES</b>	
1 - 4.....	5
<b>28 FABRICATED METAL PRODUCTS, EXCEPT MACHINERY &amp; EQUIPMENT</b>	
1 - 4.....	18
<b>29 MACHINERY &amp; EQUIPMENT N.B.C.</b>	
1 - 4.....	1
<b>34 MOTOR VEHICLES, TRAILERS &amp; SEMI-TRAILERS</b>	
1 - 4.....	1
<b>36 MANU. OF FURNITURE, MANUFACTURING N.B.C.</b>	
1 - 4.....	14
<b>37 RECYCLING</b>	
1 - 4.....	68
5 - 14.....	2
15 & ABOVE.....	1
<b>99 OTHER PRODUCT</b>	
15 & ABOVE.....	1

\* - MINING & QUARRYING AND MANUFACTURING

(continued)

TABLE 10: DISTRIBUTION OF ESTABLISHMENT\* & PERSONS ENGAGED BY DIVISIONAL  
SECRETARY DIVISION & PERSONS ENGAGED SIZE CLASS -  
KURUNEGALA DISTRICT - RURAL SECTOR - 1995

D.S. DIVISION & INDUSTRY DIVISION	NO. OF ESTABLISHMENTS
<b>GALGANUWA</b>	
<b>14 OTHER MINING &amp; QUARRYING</b>	
1 - 4.....	33
5 - 14.....	4
<b>15 FOOD PRODUCTS &amp; BEVERAGES</b>	
1 - 4.....	275
5 - 14.....	5
15 & ABOVE.....	2
<b>16 TOBACCO PRODUCTS</b>	
1 - 4.....	5
<b>17 TEXTILES</b>	
1 - 4.....	54
<b>18 WEARING APPEREL DRESSING &amp; DYEING OF FUR</b>	
1 - 4.....	58
5 - 14.....	5
15 & ABOVE.....	1
<b>19 TRAINING &amp; DRESSING OF LEATHER, LEATHER GOODS &amp; FOOTWEAR</b>	
1 - 4.....	4
<b>20 WOOD &amp; WOOD PRODUCTS, EXCEPT FURNITURE</b>	
1 - 4.....	109
5 - 14.....	1
<b>21 PAPER &amp; PAPER PRODUCTS</b>	
1 - 4.....	3
<b>24 CHEMICALS &amp; CHEMICAL PRODUCTS</b>	
1 - 4.....	4
<b>26 OTHER NON-METALIC MINERAL PRODUCTS</b>	
1 - 4.....	129
5 - 14.....	1
<b>27 BASIC METAL INDUSTRIES</b>	
1 - 4.....	3
<b>28 FABRICATED METAL PRODUCTS, EXCEPT MACHINERY &amp; EQUIPMENT.</b>	
1 - 4.....	22
<b>29 MACHINERY &amp; EQUIPMENT N.B.C.</b>	
1 - 4.....	16
<b>31 ELECTRICAL MACHINERY &amp; APPARATUS N.B.C.</b>	
1 - 4.....	1
<b>33 MEDICAL, PRECISION &amp; OPTICAL INDUSTRIES, WATCHES &amp; CLOCKS</b>	
1 - 4.....	1
<b>36 MANU. OF FURNITURE, MANUFACTURING N.B.C.</b>	
1 - 4.....	191
5 - 14.....	10
<b>99 OTHER PRODUCT</b>	
1 - 4.....	3

(continued)

\* - MINING &amp; QUARRYING AND MANUFACTURING

TABLE 10: DISTRIBUTION OF ESTABLISHMENT\* & PERSONS ENGAGED BY DIVISIONAL  
SECRETARY DIVISION & PERSONS ENGAGED SIZE CLASS  
KURUNBGALA DISTRICT - RURAL SECTOR - 1995

D.S.DIVISION & INDUSTRY DIVISION	NO.OF ESTABLISHMENTS
<b>GANEWATTA</b>	
<b>14 OTHER MINING &amp; QUARRYING</b>	
1 - 4.....	4
5 - 14.....	1
<b>15 FOOD PRODUCTS &amp; BEVERAGES</b>	
1 - 4.....	102
5 - 14.....	7
<b>16 TOBACCO PRODUCTS</b>	
1 - 4.....	8
5 - 14.....	1
<b>17 TEXTILES</b>	
1 - 4.....	32
5 - 14.....	4
<b>18 WEARING APPEREL DRESSING &amp; DYEING OF FUR</b>	
1 - 4.....	13
15 & ABOVE.....	1
<b>20 WOOD &amp; WOOD PRODUCTS, EXCEPT FURNITURE</b>	
1 - 4.....	55
5 - 14.....	3
<b>22 PUBLISHING, PRINTING &amp; REPRODUCTION OF RECORDED MEDIA</b>	
1 - 4.....	1
<b>24 CHEMICALS &amp; CHEMICAL PRODUCTS</b>	
1 - 4.....	4
<b>26 OTHER NON-METALIC MINERAL PRODUCTS</b>	
1 - 4.....	100
5 - 14.....	19
<b>28 FABRICATED METAL PRODUCTS, EXCEPT MACHINERY &amp; EQUIPMENT</b>	
1 - 4.....	15
5 - 14.....	1
<b>34 MOTOR VEHICLES, TRAILERS &amp; SEMI-TRAILERS</b>	
1 - 4.....	4
<b>36 MANU.OF FURNITURE, MANUFACTURING N.B.C.</b>	
1 - 4.....	11
<b>GIRIBAWA</b>	
<b>14 OTHER MINING &amp; QUARRYING</b>	
1 - 4.....	6
5 - 14.....	4
<b>15 FOOD PRODUCTS &amp; BEVERAGES</b>	
1 - 4.....	142
5 - 14.....	3
<b>16 TOBACCO PRODUCTS</b>	
1 - 4.....	15
<b>17 TEXTILES</b>	
1 - 4.....	11
<b>18 WEARING APPEREL DRESSING &amp; DYEING OF FUR</b>	
1 - 4.....	40
<b>20 WOOD &amp; WOOD PRODUCTS, EXCEPT FURNITURE</b>	
1 - 4.....	123

\* - MINING &amp; QUARRYING AND MANUFACTURING

(continued)



TABLE 10: DISTRIBUTION OF ESTABLISHMENT\* & PERSONS ENGAGED BY DIVISIONAL  
SECRETARY DIVISION & PERSONS ENGAGED SIZE CLASS  
KURUNEGALA DISTRICT - RURAL SECTOR - 1995

D.S.DIVISION & INDUSTRY DIVISION	NO. OF ESTABLISHMENTS
26 OTHER NON-METALIC MINERAL PRODUCTS	
1 - 4.....	8
28 FABRICATED METAL PRODUCTS, EXCEPT MACHINERY & EQUIPMENT	
1 - 4.....	13
29 MACHINERY & EQUIPMENT N.B.C.	
1 - 4.....	2
36 MANU. OF FURNITURE, MANUFACTURING N.B.C.	
1 - 4.....	7
IBBAGAMUWA	
14 OTHER MINING & QUARRYING	
1 - 4.....	20
5 - 14.....	15
15 & ABOVE.....	1
15 FOOD PRODUCTS & BEVERAGES	
1 - 4.....	426
5 - 14.....	18
15 & ABOVE.....	3
16 TOBACCO PRODUCTS	
1 - 4.....	38
5 - 14.....	16
15 & ABOVE.....	21
17 TEXTILES	
1 - 4.....	81
5 - 14.....	12
15 & ABOVE.....	4
18 WEARING APPEREL DRESSING & DYEING OF FUR	
1 - 4.....	76
5 - 14.....	6
15 & ABOVE.....	2
19 TRAINING & DRESSING OF LEATHER, LEATHER GOODS & FOOTWEAR	
1 - 4.....	2
20 WOOD & WOOD PRODUCTS, EXCEPT FURNITURE	
1 - 4.....	78
5 - 14.....	5
21 PAPER & PAPER PRODUCTS	
1 - 4.....	3
24 CHEMICALS & CHEMICAL PRODUCTS	
1 - 4.....	6
25 RUBBER & PLASTICS PRODUCTS	
5 - 14.....	1
15 & ABOVE.....	1
26 OTHER NON-METALIC MINERAL PRODUCTS	
1 - 4.....	85
5 - 14.....	3
15 & ABOVE.....	1

(continued)

\* - MINING &amp; QUARRYING AND MANUFACTURING

TABLE 10: DISTRIBUTION OF ESTABLISHMENT\* & PERSONS ENGAGED BY DIVISIONAL  
SECRETARY DIVISION & PERSONS ENGAGED SIZE CLASS  
KURUNGALA DISTRICT - RURAL SECTOR - 1995

D.S. DIVISION & INDUSTRY DIVISION	NO. OF ESTABLISHMENTS
<b>27 BASIC METAL INDUSTRIES</b>	
1 - 4.....	2
<b>28 FABRICATED METAL PRODUCTS, EXCEPT MACHINERY &amp; EQUIPMENT</b>	
1 - 4.....	21
5 - 14.....	1
<b>32 RADIO, TELEVISION &amp; COMMUNICATION EQUIPMENT &amp; APPARATUS</b>	
1 - 4.....	1
<b>34 MOTOR VEHICLES, TRAILERS &amp; SEMI-TRAILERS</b>	
5 - 14.....	1
<b>36 MANU. OF FURNITURE, MANUFACTURING N.E.C.</b>	
1 - 4.....	38
5 - 14.....	1
15 & ABOVE.....	1
<b>KATUPOTHA</b>	
<b>14 OTHER MINING &amp; QUARRYING</b>	
1 - 4.....	15
5 - 14.....	5
15 & ABOVE.....	2
<b>15 FOOD PRODUCTS &amp; BEVERAGES</b>	
1 - 4.....	125
5 - 14.....	8
<b>16 TOBACCO PRODUCTS</b>	
1 - 4.....	70
5 - 14.....	2
<b>17 TEXTILES</b>	
1 - 4.....	48
5 - 14.....	12
15 & ABOVE.....	5
<b>18 WEARING APPEREL DRESSING &amp; DYING OF FUR</b>	
1 - 4.....	28
<b>19 TRAINING &amp; DRESSING OF LEATHER, LEATHER GOODS &amp; FOOTWEAR</b>	
5 - 14.....	1
<b>20 WOOD &amp; WOOD PRODUCTS, EXCEPT FURNITURE</b>	
1 - 4.....	198
5 - 14.....	13
<b>21 PAPER &amp; PAPER PRODUCTS</b>	
1 - 4.....	5
<b>24 CHEMICALS &amp; CHEMICAL PRODUCTS</b>	
1 - 4.....	3
<b>25 RUBBER &amp; PLASTICS PRODUCTS</b>	
1 - 4.....	1
<b>26 OTHER NON-METALIC MINERAL PRODUCTS</b>	
1 - 4.....	322
5 - 14.....	14
<b>27 BASIC METAL INDUSTRIES</b>	
5 - 14.....	1

\* - MINING & QUARRYING AND MANUFACTURING

(continued)

TABLE 10: DISTRIBUTION OF ESTABLISHMENT\* & PERSONS ENGAGED BY DIVISIONAL  
SECRETARY DIVISION & PERSONS ENGAGED SIZE CLASS  
KURUNEGALA DISTRICT - RURAL SECTOR - 1995

D.S.DIVISION & INDUSTRY DIVISION	NO.OF ESTABLISHMENTS
28 FABRICATED METAL PRODUCTS, EXCEPT MACHINERY & EQUIPMENT	
1 - 4.....	11
34 MOTOR VEHICLES, TRAILERS & SEMI-TRAILERS	
5 - 14.....	1
35 OTHER TRANSPORT EQUIPMENT	
1 - 4.....	3
36 MANU.OF FURNITURE, MANUFACTURING N.E.C.	
1 - 4.....	85
5 - 14.....	4
37 RECYCLING	
1 - 4.....	1
99 OTHER PRODUCT	
5 - 14.....	1
KOBBIGANE	
14 OTHER MINING & QUARRYING	
1 - 4.....	1
5 - 14.....	2
15 & ABOVE.....	1
15 FOOD PRODUCTS & BEVERAGES	
1 - 4.....	91
5 - 14.....	10
15 & ABOVE.....	2
16 TOBACCO PRODUCTS	
1 - 4.....	9
17 TEXTILES	
1 - 4.....	35
5 - 14.....	8
15 & ABOVE.....	5
18 WEARING APPEREL DRBSSING & DYING OF FUR	
1 - 4.....	18
5 - 14.....	1
20 WOOD & WOOD PRODUCTS, EXCEPT FURNITURE	
1 - 4.....	79
5 - 14.....	4
24 CHEMICALS & CHEMICAL PRODUCTS	
1 - 4.....	2
26 OTHER NON-METALIC MINERAL PRODUCTS	
1 - 4.....	39
5 - 14.....	3
28 FABRICATED METAL PRODUCTS, EXCEPT MACHINERY & EQUIPMENT	
1 - 4.....	18
5 - 14.....	4
29 MACHINERY & EQUIPMENT N.E.C.	
1 - 4.....	11
5 - 14.....	3
32 RADIO, TELEVISION & COMMUNICATION EQUIPMENT & APPARATUS	
1 - 4.....	1

- MINING & QUARRYING AND MANUFACTURING

(continued)

TABLE 10: DISTRIBUTION OF ESTABLISHMENT\* & PERSONS ENGAGED BY DIVISIONAL  
SECRETARY DIVISION & PERSONS ENGAGED SIZE CLASS  
KURUNEGALA DISTRICT - RURAL SECTOR - 1995

D.S. DIVISION & INDUSTRY DIVISION	NO. OF ESTABLISHMENTS
34 MOTOR VEHICLES, TRAILERS & SEMI-TRAILERS	
1 - 4.....	6
35 OTHER TRANSPORT EQUIPMENT	
1 - 4.....	5
36 MANU. OF FURNITURE, MANUFACTURING N.E.C.	
1 - 4.....	44
37 RECYCLING	
1 - 4.....	46
15 & ABOVE.....	1
99 OTHER PRODUCT	
1 - 4.....	1
<b>KOTAWHERA</b>	
14 OTHER MINING & QUARRYING	
5 - 14.....	3
15 FOOD PRODUCTS & BEVERAGES	
1 - 4.....	123
5 - 14.....	1
17 TEXTILES	
1 - 4.....	2
5 - 14.....	1
18 WEARING APPEREL DRESSING & DYING OF FUR	
1 - 4.....	5
20 WOOD & WOOD PRODUCTS, EXCEPT FURNITURE	
1 - 4.....	72
26 OTHER NON-METALIC MINERAL PRODUCTS	
1 - 4.....	8
28 FABRICATED METAL PRODUCTS, EXCEPT MACHINERY & EQUIPMENT	
1 - 4.....	3
29 MACHINERY & EQUIPMENT N.E.C.	
1 - 4.....	8
36 MANU. OF FURNITURE, MANUFACTURING N.E.C.	
1 - 4.....	5
<b>KULIYAPITIYA WEST</b>	
14 OTHER MINING & QUARRYING	
1 - 4.....	33
5 - 14.....	20
15 & ABOVE.....	2
15 FOOD PRODUCTS & BEVERAGES	
1 - 4.....	430
5 - 14.....	24
15 & ABOVE.....	10
16 TOBACCO PRODUCTS	
1 - 4.....	29
17 TEXTILES	
1 - 4.....	41
5 - 14.....	15
15 & ABOVE.....	14

\* - MINING & QUARRYING AND MANUFACTURING

(continued)

TABLE 10: DISTRIBUTION OF ESTABLISHMENT\* & PERSONS ENGAGED BY DIVISIONAL  
SECRETARY DIVISION & PERSONS ENGAGED SIZE CLASS  
KURUNEGALA DISTRICT - RURAL SECTOR - 1995

D.S. DIVISION & INDUSTRY DIVISION	NO. OF ESTABLISHMENTS
<b>18 WEARING APPERBEL DRESSING &amp; DYEING OF FUR</b>	
1 - 4.....	68
5 - 14.....	3
<b>19 TRAINING &amp; DRESSING OF LEATHER, LEATHER GOODS &amp; FOOTWEAR</b>	
1 - 4.....	3
5 - 14.....	1
<b>20 WOOD &amp; WOOD PRODUCTS, EXCEPT FURNITURE</b>	
1 - 4.....	139
5 - 14.....	11
<b>21 PAPER &amp; PAPER PRODUCTS</b>	
1 - 4.....	1
<b>24 CHEMICALS &amp; CHEMICAL PRODUCTS</b>	
1 - 4.....	3
5 - 14.....	1
<b>25 RUBBER &amp; PLASTICS PRODUCTS</b>	
1 - 4.....	1
<b>26 OTHER NON-METALIC MINERAL PRODUCTS</b>	
1 - 4.....	160
5 - 14.....	21
<b>27 BASIC METAL INDUSTRIES</b>	
1 - 4.....	1
<b>28 FABRICATED METAL PRODUCTS, EXCEPT MACHINERY &amp; EQUIPMENT</b>	
1 - 4.....	29
5 - 14.....	1
<b>29 MACHINERY &amp; EQUIPMENT N.B.C.</b>	
1 - 4.....	2
<b>34 MOTOR VEHICLES, TRAILERS &amp; SEMI-TRAILERS</b>	
1 - 4.....	1
<b>36 MANU. OF FURNITURE, MANUFACTURING N.B.C.</b>	
1 - 4.....	35
5 - 14.....	1
15 & ABOVE.....	1
<b>37 RECYCLING</b>	
1 - 4.....	4
<b>99 OTHER PRODUCT</b>	
1 - 4.....	1
<b>KULIYAPITIYA EAST</b>	
<b>14 OTHER MINING &amp; QUARRYING</b>	
1 - 4.....	26
5 - 14.....	4
<b>15 FOOD PRODUCTS &amp; BEVERAGES</b>	
1 - 4.....	161
5 - 14.....	11
15 & ABOVE.....	2

(continued)

\* - MINING &amp; QUARRYING AND MANUFACTURING

TABLE 10: DISTRIBUTION OF ESTABLISHMENT\* & PERSONS ENGAGED BY DIVISIONAL  
SECRETARY DIVISION & PERSONS ENGAGED SIZE CLASS  
KURUNEGALA DISTRICT - RURAL SECTOR - 1995

D.S.DIVISION & INDUSTRY DIVISION	NO.OF ESTABLISHMENTS
<b>16 TOBACCO PRODUCTS</b>	
1 - 4.....	110
5 - 14.....	1
<b>17 TEXTILES</b>	
1 - 4.....	58
5 - 14.....	9
15 & ABOVE.....	10
<b>18 WEARING APPEREL DRESSING &amp; DYING OF FUR</b>	
1 - 4.....	14
5 - 14.....	1
15 & ABOVE.....	2
<b>20 WOOD &amp; WOOD PRODUCTS, EXCEPT FURNITURE</b>	
1 - 4.....	75
5 - 14.....	30
<b>21 PAPER &amp; PAPER PRODUCTS</b>	
1 - 4.....	3
<b>24 CHEMICALS &amp; CHEMICAL PRODUCTS</b>	
1 - 4.....	1
<b>26 OTHER NON-METALIC MINERAL PRODUCTS</b>	
1 - 4.....	39
5 - 14.....	3
<b>27 BASIC METAL INDUSTRIES</b>	
1 - 4.....	4
<b>28 FABRICATED METAL PRODUCTS, EXCEPT MACHINERY &amp; EQUIPMENT</b>	
1 - 4.....	14
<b>29 MACHINERY &amp; EQUIPMENT N.E.C.</b>	
1 - 4.....	4
<b>33 MEDICAL, PRECISION &amp; OPTICAL INDUSTRIES, WATCHES &amp; CLOCKS</b>	
1 - 4.....	1
<b>34 MOTOR VEHICLES, TRAILERS &amp; SEMI-TRAILERS</b>	
1 - 4.....	1
<b>36 MANU. OF FURNITURE, MANUFACTURING N.E.C.</b>	
1 - 4.....	35
5 - 14.....	1
<b>KURUNEGALA</b>	
<b>14 OTHER MINING &amp; QUARRYING</b>	
1 - 4.....	26
5 - 14.....	16
15 & ABOVE.....	1
<b>15 FOOD PRODUCTS &amp; BEVERAGES</b>	
1 - 4.....	132
5 - 14.....	17
15 & ABOVE.....	4
<b>16 TOBACCO PRODUCTS</b>	
1 - 4.....	14
5 - 14.....	3
15 & ABOVE.....	3

(continued)

\* - MINING &amp; QUARRYING AND MANUFACTURING

TABLE 10: DISTRIBUTION OF ESTABLISHMENT\* & PERSONS ENGAGED BY DIVISIONAL  
SECRETARY DIVISION & PERSONS ENGAGED SIZE CLASS  
KURUNEGALA DISTRICT - RURAL SECTOR - 1995

D.S.DIVISION & INDUSTRY DIVISION	NO.OF ESTABLISHMENTS
<b>17 TEXTILES</b>	
1 - 4.....	44
5 - 14.....	4
15 & ABOVE.....	10
<b>18 WEARING APPEREL DRESSING &amp; DYING OF FUR</b>	
1 - 4.....	18
5 - 14.....	4
15 & ABOVE.....	5
<b>19 TRAINING &amp; DRESSING OF LEATHER, LEATHER GOODS &amp; FOOTWEAR</b>	
1 - 4.....	1
5 - 14.....	1
<b>20 WOOD &amp; WOOD PRODUCTS, EXCEPT FURNITURE</b>	
1 - 4.....	48
5 - 14.....	5
15 & ABOVE.....	1
<b>21 PAPER &amp; PAPER PRODUCTS</b>	
1 - 4.....	4
5 - 14.....	1
<b>22 PUBLISHING, PRINTING &amp; REPRODUCTION OF RECORDED MEDIA</b>	
1 - 4.....	1
<b>24 CHEMICALS &amp; CHEMICAL PRODUCTS</b>	
1 - 4.....	7
5 - 14.....	3
<b>25 RUBBER &amp; PLASTICS PRODUCTS</b>	
1 - 4.....	1
5 - 14.....	1
15 & ABOVE.....	3
<b>26 OTHER NON-METALIC MINERAL PRODUCTS</b>	
1 - 4.....	91
5 - 14.....	2
15 & ABOVE.....	1
<b>28 FABRICATED METAL PRODUCTS, EXCEPT MACHINERY &amp; EQUIPMENT</b>	
1 - 4.....	24
5 - 14.....	5
<b>29 MACHINERY &amp; EQUIPMENT N.B.C.</b>	
1 - 4.....	4
5 - 14.....	3
<b>34 MOTOR VEHICLES, TRAILERS &amp; SEMI-TRAILERS</b>	
1 - 4.....	1
5 - 14.....	2
<b>36 MANU.OF FURNITURE, MANUFACTURING N.B.C.</b>	
1 - 4.....	17
5 - 14.....	3
<b>99 OTHER PRODUCT</b>	
1 - 4.....	3
15 & ABOVE.....	1

(continued)

\* - MINING &amp; QUARRYING AND MANUFACTURING

TABLE 10: DISTRIBUTION OF ESTABLISHMENT\* & PERSONS ENGAGED BY DIVISIONAL  
SECRETARY DIVISION & PERSONS ENGAGED SIZE CLASS  
KURUNEGALA DISTRICT - RURAL SECTOR - 1995

D.S.DIVISION & INDUSTRY DIVISION	NO. OF ESTABLISHMENTS
<b>MAHAWA</b>	
14 OTHER MINING & QUARRYING	
1 - 4.....	19
5 - 14.....	10
15 & ABOVE.....	2
15 FOOD PRODUCTS & BEVERAGES	
1 - 4.....	278
5 - 14.....	6
15 & ABOVE.....	1
16 TOBACCO PRODUCTS	
1 - 4.....	4
17 TEXTILES	
1 - 4.....	14
5 - 14.....	2
18 WEAVING APPEREL DRESSING & DYING OF FUR	
1 - 4.....	50
5 - 14.....	2
15 & ABOVE.....	4
20 WOOD & WOOD PRODUCTS, EXCEPT FURNITURE	
1 - 4.....	71
5 - 14.....	2
15 & ABOVE.....	1
21 PAPER & PAPER PRODUCTS	
1 - 4.....	1
22 PUBLISHING, PRINTING & REPRODUCTION OF RECORDED MEDIA	
1 - 4.....	2
24 CHEMICALS & CHEMICAL PRODUCTS	
1 - 4.....	1
26 OTHER NON-METALIC MINERAL PRODUCTS	
1 - 4.....	51
5 - 14.....	5
28 FABRICATED METAL PRODUCTS, EXCEPT MACHINERY & EQUIPMENT	
1 - 4.....	42
31 ELECTRICAL MACHINERY & APPARATUS N.E.C.	
1 - 4.....	1
32 RADIO, TELEVISION & COMMUNICATION EQUIPMENT & APPARATUS	
1 - 4.....	2
36 MANU. OF FURNITURE, MANUFACTURING N.E.C.	
1 - 4.....	101
5 - 14.....	11
99 OTHER PRODUCT	
15 & ABOVE.....	1
<b>MALLAWAPITIYA</b>	
14 OTHER MINING & QUARRYING	
1 - 4.....	41
5 - 14.....	9
15 & ABOVE.....	1

\* - MINING & QUARRYING AND MANUFACTURING

(continued)



**TABLE 10: DISTRIBUTION OF ESTABLISHMENT\* & PERSONS ENGAGED BY DIVISIONAL  
SECRETARY DIVISION & PERSONS ENGAGED SIZE CLASS  
KURUNEGALA DISTRICT - RURAL SECTOR - 1995**

D.S.DIVISION & INDUSTRY DIVISION	NO. OF ESTABLISHMENTS
<b>15 FOOD PRODUCTS &amp; BEVERAGES</b>	
1 - 4.....	170
5 - 14.....	7
15 & ABOVE.....	6
<b>16 TOBACCO PRODUCTS</b>	
1 - 4.....	265
5 - 14.....	4
15 & ABOVE.....	1
<b>17 TEXTILES</b>	
1 - 4.....	20
5 - 14.....	9
15 & ABOVE.....	6
<b>18 WEARING APPERBEL DRSSING &amp; DYING OF FUR</b>	
1 - 4.....	11
15 & ABOVE.....	1
<b>19 TRAINING &amp; DRSSING OF LEATHER, LEATHER GOODS &amp; FOOTWEAR</b>	
1 - 4.....	4
15 & ABOVE.....	1
<b>20 WOOD &amp; WOOD PRODUCTS, EXCEPT FURNITURE</b>	
1 - 4.....	73
5 - 14.....	5
<b>21 PAPER &amp; PAPER PRODUCTS</b>	
1 - 4.....	1
<b>24 CHEMICALS &amp; CHEMICAL PRODUCTS</b>	
1 - 4.....	2
5 - 14.....	1
<b>25 RUBBER &amp; PLASTICS PRODUCTS</b>	
1 - 4.....	6
<b>26 OTHER NON-METALIC MINERAL PRODUCTS</b>	
1 - 4.....	11
5 - 14.....	1
15 & ABOVE.....	1
<b>27 BASIC METAL INDUSTRIES</b>	
1 - 4.....	1
<b>28 FABRICATED METAL PRODUCTS, EXCEPT MACHINERY &amp; EQUIPMENT</b>	
1 - 4.....	22
<b>36 MANU. OF FURNITURE, MANUFACTURING N.E.C.</b>	
1 - 4.....	31
5 - 14.....	3
15 & ABOVE.....	1
<b>MASPOTHA</b>	
<b>14 OTHER MINING &amp; QUARRYING</b>	
1 - 4.....	16
5 - 14.....	12
15 & ABOVE.....	3

(continued)

\* - MINING &amp; QUARRYING AND MANUFACTURING

TABLE 10: DISTRIBUTION OF ESTABLISHMENT\* & PERSONS ENGAGED BY DIVISIONAL SECRETARY DIVISION & PERSONS ENGAGED SIZE CLASS KURUNGALA DISTRICT - RURAL SECTOR - 1995

D.S.DIVISION & INDUSTRY DIVISION	NO.OF ESTABLISHMENTS
<b>15 FOOD PRODUCTS &amp; BEVERAGES</b>	
1 - 4.....	83
5 - 14.....	1
15 & ABOVE.....	3
<b>16 TOBACCO PRODUCTS</b>	
1 - 4.....	46
5 - 14.....	6
<b>17 TEXTILES</b>	
1 - 4.....	58
5 - 14.....	16
15 & ABOVE.....	7
<b>18 WEARING APPEREL DRESSING &amp; DYING OF FUR</b>	
1 - 4.....	18
5 - 14.....	2
<b>19 TRAINING &amp; DRSSING OF LEATHER, LEATHER GOODS &amp; FOOTWEAR</b>	
1 - 4.....	1
<b>20 WOOD &amp; WOOD PRODUCTS, EXCEPT FURNITURE</b>	
1 - 4.....	53
5 - 14.....	13
<b>21 PAPER &amp; PAPER PRODUCTS</b>	
1 - 4.....	21
15 & ABOVE.....	1
<b>22 PUBLISHING, PRINTING &amp; REPRODUCTION OF RECORDED MEDIA</b>	
1 - 4.....	1
<b>24 CHEMICALS &amp; CHEMICAL PRODUCTS</b>	
1 - 4.....	2
<b>26 OTHER NON-METALIC MINERAL PRODUCTS</b>	
1 - 4.....	142
5 - 14.....	6
15 & ABOVE.....	1
<b>27 BASIC METAL INDUSTRIES</b>	
1 - 4.....	11
5 - 14.....	1
<b>28 FABRICATED METAL PRODUCTS, EXCEPT MACHINERY &amp; EQUIPMENT</b>	
1 - 4.....	13
<b>32 RADIO, TELEVISION &amp; COMMUNICATION EQUIPMENT &amp; APPARATUS</b>	
1 - 4.....	2
15 & ABOVE.....	1
<b>34 MOTOR VEHICLES, TRAILERS &amp; SEMI-TRAILERS</b>	
1 - 4.....	2
5 - 14.....	1
<b>36 MANU.OF FURNITURE, MANUFACTURING N.E.C.</b>	
1 - 4.....	22
15 & ABOVE.....	1
<b>MAWATHAGAMA</b>	
<b>14 OTHER MINING &amp; QUARRYING</b>	
1 - 4.....	34
5 - 14.....	12

\* - MINING &amp; QUARRYING AND MANUFACTURING

(continued)

**TABLE 10: DISTRIBUTION OF ESTABLISHMENT\* & PERSONS ENGAGED BY DIVISIONAL  
SECRETARY DIVISION & PERSONS ENGAGED SIZE CLASS  
KURUNEGALA DISTRICT - RURAL SECTOR - 1995**

<b>D.S.DIVISION &amp; INDUSTRY DIVISION</b>	<b>NO.OF ESTABLISHMENTS</b>
<b>15 FOOD PRODUCTS &amp; BEVERAGES</b>	
1 - 4.....	204
5 - 14.....	18
15 & ABOVE.....	2
<b>16 TOBACCO PRODUCTS</b>	
1 - 4.....	111
5 - 14.....	6
15 & ABOVE.....	1
<b>17 TEXTILES</b>	
1 - 4.....	52
5 - 14.....	9
15 & ABOVE.....	3
<b>18 WEARING APPEREL DRESSING &amp; DYING OF FUR</b>	
1 - 4.....	33
5 - 14.....	1
15 & ABOVE.....	2
<b>19 TRAINING &amp; DRESSING OF LEATHER, LEATHER GOODS &amp; FOOTWEAR</b>	
1 - 4.....	1
5 - 14.....	1
<b>20 WOOD &amp; WOOD PRODUCTS, EXCEPT FURNITURE</b>	
1 - 4.....	12
5 - 14.....	4
<b>21 PAPER &amp; PAPER PRODUCTS</b>	
1 - 4.....	4
<b>23 COKE, REFINED PETROLEUM PRODUC.</b>	
1 - 4.....	1
<b>24 CHEMICALS &amp; CHEMICAL PRODUCTS</b>	
1 - 4.....	3
<b>25 RUBBER &amp; PLASTICS PRODUCTS</b>	
1 - 4.....	18
5 - 14.....	1
15 & ABOVE.....	2
<b>26 OTHER NON-METALIC MINERAL PRODUCTS</b>	
1 - 4.....	74
5 - 14.....	10
15 & ABOVE.....	1
<b>28 FABRICATED METAL PRODUCTS, EXCEPT MACHINERY &amp; EQUIPMENT</b>	
1 - 4.....	17
<b>36 MANU.OF FURNITURE, MANUFACTURING N.B.C.</b>	
1 - 4.....	118
5 - 14.....	10
15 & ABOVE.....	6
<b>NARAMMALA</b>	
<b>14 OTHER MINING &amp; QUARRYING</b>	
1 - 4.....	22
5 - 14.....	13

(continued)

\* - MINING &amp; QUARRYING AND MANUFACTURING

TABLE 10: DISTRIBUTION OF ESTABLISHMENT\* & PERSONS ENGAGED BY DIVISIONAL  
SECRETARY DIVISION & PERSONS ENGAGED SIZE CLASS  
KURUNEGALA DISTRICT - RURAL SECTOR - 1995

D.S.DIVISION & INDUSTRY DIVISION	NO.OF ESTABLISHMENTS
<b>15 FOOD PRODUCTS &amp; BEVERAGES</b>	
1 - 4.....	118
5 - 14.....	10
15 & ABOVE.....	4
<b>16 TOBACCO PRODUCTS</b>	
1 - 4.....	41
5 - 14.....	2
<b>17 TEXTILES</b>	
1 - 4.....	295
5 - 14.....	6
15 & ABOVE.....	4
<b>18 WEARING APPEREL DRESSING &amp; DYING OF FUR</b>	
1 - 4.....	25
5 - 14.....	1
15 & ABOVE.....	1
<b>19 TRAINING &amp; DRESSING OF LEATHER, LEATHER GOODS &amp; FOOTWEAR</b>	
1 - 4.....	1
<b>20 WOOD &amp; WOOD PRODUCTS, EXCEPT FURNITURE</b>	
1 - 4.....	89
5 - 14.....	15
15 & ABOVE.....	4
<b>22 PUBLISHING, PRINTING &amp; REPRODUCTION OF RECORDED MEDIA</b>	
1 - 4.....	3
<b>24 CHEMICALS &amp; CHEMICAL PRODUCTS</b>	
1 - 4.....	6
5 - 14.....	1
15 & ABOVE.....	3
<b>25 RUBBER &amp; PLASTICS PRODUCTS</b>	
1 - 4.....	16
15 & ABOVE.....	1
<b>26 OTHER NON-METALIC MINERAL PRODUCTS</b>	
1 - 4.....	103
5 - 14.....	4
15 & ABOVE.....	1
<b>28 FABRICATED METAL PRODUCTS, EXCEPT MACHINERY &amp; EQUIPMENT</b>	
1 - 4.....	11
<b>29 MACHINERY &amp; EQUIPMENT N.E.C.</b>	
1 - 4.....	11
5 - 14.....	2
<b>33 MEDICAL, PRECISION &amp; OPTICAL INDUSTRIES, WATCHES &amp; CLOCKS</b>	
5 - 14.....	1
<b>34 MOTOR VEHICLES, TRAILERS &amp; SEMI-TRAILERS</b>	
5 - 14.....	2
<b>36 MANU.OF FURNITURE, MANUFACTURING N.E.C.</b>	
1 - 4.....	18
5 - 14.....	2

(continued)

\* - MINING &amp; QUARRYING AND MANUFACTURING

TABLE 10: DISTRIBUTION OF ESTABLISHMENT\* & PERSONS ENGAGED BY DIVISIONAL  
SECRETARY DIVISION & PERSONS ENGAGED SIZE CLASS  
KURUMBALA DISTRICT - RURAL SECTOR - 1995

D.S.DIVISION & INDUSTRY DIVISION	NO.OF ESTABLISHMENTS
<b>37 RECYCLING</b>	
1 - 4.....	2
15 & ABOVE.....	2
<b>99 OTHER PRODUCT</b>	
1 - 4.....	1
5 - 14.....	1
<b>NIKAWERATIYA</b>	
<b>14 OTHER MINING &amp; QUARRYING</b>	
1 - 4.....	12
5 - 14.....	3
15 & ABOVE.....	1
<b>15 FOOD PRODUCTS &amp; BEVERAGES</b>	
1 - 4.....	154
5 - 14.....	12
15 & ABOVE.....	1
<b>17 TEXTILES</b>	
1 - 4.....	1
5 - 14.....	1
<b>18 WEARING APPEREL DRESSING &amp; DYEING OF FUR</b>	
1 - 4.....	22
5 - 14.....	1
15 & ABOVE.....	1
<b>19 TRAINING &amp; DRESSING OF LEATHER, LEATHER GOODS &amp; FOOTWEAR</b>	
1 - 4.....	1
<b>20 WOOD &amp; WOOD PRODUCTS, EXCEPT FURNITURE</b>	
1 - 4.....	97
5 - 14.....	2
<b>21 PAPER &amp; PAPER PRODUCTS</b>	
1 - 4.....	9
<b>24 CHEMICALS &amp; CHEMICAL PRODUCTS</b>	
1 - 4.....	8
5 - 14.....	1
<b>26 OTHER NON-METALIC MINERAL PRODUCTS</b>	
1 - 4.....	62
5 - 14.....	5
<b>28 FABRICATED METAL PRODUCTS, EXCEPT MACHINERY &amp; EQUIPMENT</b>	
1 - 4.....	28
5 - 14.....	4
<b>34 MOTOR VEHICLES, TRAILERS &amp; SEMI-TRAILERS</b>	
1 - 4.....	1
<b>35 OTHER TRANSPORT EQUIPMENT</b>	
1 - 4.....	1
<b>36 MANU.OF FURNITURE, MANUFACTURING N.B.C.</b>	
1 - 4.....	10
5 - 14.....	2
15 & ABOVE.....	1

(continued)

\* - MINING &amp; QUARRYING AND MANUFACTURING

TABLE 10: DISTRIBUTION OF ESTABLISHMENT\* & PERSONS ENGAGED BY DIVISIONAL  
SECRETARY DIVISION & PERSONS ENGAGED SIZE CLASS  
KURUNGALA DISTRICT - RURAL SECTOR - 1995

D.S.DIVISION & INDUSTRY DIVISION	NO. OF ESTABLISHMENTS
<b>PANDUWASNUWARA</b>	
<b>14 OTHER MINING &amp; QUARRYING</b>	
1 - 4.....	17
5 - 14.....	9
15 & ABOVE.....	1
<b>15 FOOD PRODUCTS &amp; BEVERAGES</b>	
1 - 4.....	391
5 - 14.....	35
15 & ABOVE.....	5
<b>16 TOBACCO PRODUCTS</b>	
1 - 4.....	3
5 - 14.....	2
<b>17 TEXTILES</b>	
1 - 4.....	33
5 - 14.....	19
15 & ABOVE.....	30
<b>18 WEAVING APPAREL DRESSING &amp; DYING OF FUR</b>	
1 - 4.....	42
5 - 14.....	1
15 & ABOVE.....	1
<b>19 TRAINING &amp; DRESSING OF LEATHER, LEATHER GOODS &amp; FOOTWEAR</b>	
5 - 14.....	2
<b>20 WOOD &amp; WOOD PRODUCTS, EXCEPT FURNITURE</b>	
1 - 4.....	300
5 - 14.....	9
15 & ABOVE.....	1
<b>23 COKE, REFINED PETROLEUM PRODUC.</b>	
1 - 4.....	1
5 - 14.....	1
<b>24 CHEMICALS &amp; CHEMICAL PRODUCTS</b>	
1 - 4.....	5
<b>25 RUBBER &amp; PLASTICS PRODUCTS</b>	
1 - 4.....	2
<b>26 OTHER NON-METALIC MINERAL PRODUCTS</b>	
1 - 4.....	243
5 - 14.....	8
<b>28 FABRICATED METAL PRODUCTS, EXCEPT MACHINERY &amp; EQUIPMENT</b>	
1 - 4.....	26
5 - 14.....	3
<b>29 MACHINERY &amp; EQUIPMENT N.E.C.</b>	
1 - 4.....	2
<b>31 ELECTRICAL MACHINERY &amp; APPARATUS N.E.C.</b>	
1 - 4.....	1
<b>36 MANU. OF FURNITURE, MANUFACTURING N.E.C.</b>	
1 - 4.....	20
5 - 14.....	2
15 & ABOVE.....	1

(continued)

\* - MINING &amp; QUARRYING AND MANUFACTURING

TABLE 10: DISTRIBUTION OF ESTABLISHMENT\* & PERSONS ENGAGED BY DIVISIONAL  
SECRETARY DIVISION & PERSONS ENGAGED SIZE CLASS  
KURUNEGALA DISTRICT - RURAL SECTOR - 1995

D.S.DIVISION & INDUSTRY DIVISION	NO. OF ESTABLISHMENTS
<b>37 RECYCLING</b>	
1 - 4.....	4
5 - 14.....	4
15 & ABOVE.....	3
<b>PANNALA</b>	
<b>14 OTHER MINING &amp; QUARRYING</b>	
1 - 4.....	7
5 - 14.....	14
<b>15 FOOD PRODUCTS &amp; BEVERAGES</b>	
1 - 4.....	720
5 - 14.....	153
15 & ABOVE.....	15
<b>16 TOBACCO PRODUCTS</b>	
1 - 4.....	157
5 - 14.....	4
15 & ABOVE.....	1
<b>17 TEXTILES</b>	
1 - 4.....	119
5 - 14.....	87
15 & ABOVE.....	59
<b>18 WEARING APPEREL DRESSING &amp; DYEING OF FUR</b>	
1 - 4.....	93
5 - 14.....	4
15 & ABOVE.....	2
<b>20 WOOD &amp; WOOD PRODUCTS, EXCEPT FURNITURE</b>	
1 - 4.....	100
5 - 14.....	17
<b>21 PAPER &amp; PAPER PRODUCTS</b>	
1 - 4.....	6
5 - 14.....	2
15 & ABOVE.....	6
<b>24 CHEMICALS &amp; CHEMICAL PRODUCTS</b>	
1 - 4.....	10
5 - 14.....	15
<b>25 RUBBER &amp; PLASTICS PRODUCTS</b>	
1 - 4.....	4
5 - 14.....	2
<b>26 OTHER NON-METALIC MINERAL PRODUCTS</b>	
1 - 4.....	865
5 - 14.....	280
15 & ABOVE.....	30
<b>27 BASIC METAL INDUSTRIES</b>	
1 - 4.....	16
<b>28 FABRICATED METAL PRODUCTS, EXCEPT MACHINERY &amp; EQUIPMENT</b>	
1 - 4.....	49
5 - 14.....	2

(continued)

\* - MINING &amp; QUARRYING AND MANUFACTURING

**TABLE 10: DISTRIBUTION OF ESTABLISHMENT\* & PERSONS ENGAGED BY DIVISIONAL  
SECRETARY DIVISION & PERSONS ENGAGED SIZE CLASS  
KURUNEGALA DISTRICT - RURAL SECTOR - 1995**

D.S.DIVISION & INDUSTRY DIVISION	NO.OF ESTABLISHMENTS
<b>29 MACHINERY &amp; EQUIPMENT N.E.C.</b>	
1 - 4.....	2
<b>31 ELECTRICAL MACHINERY &amp; APPARATUS N.E.C.</b>	
5 - 14.....	1
<b>35 OTHER TRANSPORT EQUIPMENT</b>	
1 - 4.....	8
<b>36 MANU.OF FURNITURE, MANUFACTURING N.E.C.</b>	
1 - 4.....	184
5 - 14.....	21
<b>37 RECYCLING</b>	
1 - 4.....	3
5 - 14.....	1
15 & ABOVE.....	2
<b>POLGANAWELA</b>	
<b>14 OTHER MINING &amp; QUARRYING</b>	
1 - 4.....	29
5 - 14.....	14
15 & ABOVE.....	1
<b>15 FOOD PRODUCTS &amp; BEVERAGES</b>	
1 - 4.....	134
5 - 14.....	14
<b>16 TOBACCO PRODUCTS</b>	
1 - 4.....	49
<b>17 TEXTILES</b>	
1 - 4.....	85
5 - 14.....	4
15 & ABOVE.....	3
<b>18 WEARING APPREL DRESSING &amp; DYING OF FUR</b>	
1 - 4.....	49
5 - 14.....	6
15 & ABOVE.....	2
<b>19 TRAINING &amp; DRESSING OF LEATHER, LEATHER GOODS &amp; FOOTWEAR</b>	
1 - 4.....	1
5 - 14.....	1
<b>20 WOOD &amp; WOOD PRODUCTS, EXCEPT FURNITURE</b>	
1 - 4.....	66
5 - 14.....	16
<b>21 PAPER &amp; PAPER PRODUCTS</b>	
1 - 4.....	2
<b>25 RUBBER &amp; PLASTICS PRODUCTS</b>	
1 - 4.....	7
15 & ABOVE.....	2
<b>26 OTHER NON-METALIC MINERAL PRODUCTS</b>	
1 - 4.....	48
5 - 14.....	4

(continued)

\* - MINING &amp; QUARRYING AND MANUFACTURING



**TABLE 10: DISTRIBUTION OF ESTABLISHMENT\* & PERSONS ENGAGED BY DIVISIONAL SECRETARY DIVISION & PERSONS ENGAGED SIZE CLASS KURUMEGALA DISTRICT - RURAL SECTOR - 1995**

D.S.DIVISION & INDUSTRY DIVISION	NO.OF ESTABLISHMENTS
<b>28 FABRICATED METAL PRODUCTS, EXCEPT MACHINERY &amp; EQUIPMENT</b>	
1 - 4.....	25
5 - 14.....	2
<b>34 MOTOR VEHICLES, TRAILERS &amp; SEMI-TRAILERS</b>	
1 - 4.....	5
<b>35 OTHER TRANSPORT EQUIPMENT</b>	
1 - 4.....	1
5 - 14.....	1
<b>36 MANU.OF FURNITURE, MANUFACTURING N.B.C.</b>	
1 - 4.....	31
5 - 14.....	3
<b>99 OTHER PRODUCT</b>	
1 - 4.....	4
5 - 14.....	1
<b>POLPITHIGAMA</b>	
<b>14 OTHER MINING &amp; QUARRYING</b>	
1 - 4.....	20
5 - 14.....	10
<b>15 FOOD PRODUCTS &amp; BEVERAGES</b>	
1 - 4.....	302
5 - 14.....	5
<b>16 TOBACCO PRODUCTS</b>	
1 - 4.....	48
5 - 14.....	3
<b>17 TEXTILES</b>	
1 - 4.....	29
5 - 14.....	3
<b>18 WEARING APPEREL DRESSING &amp; DYING OF FUR</b>	
1 - 4.....	53
5 - 14.....	1
15 & ABOVE.....	2
<b>19 TRAINING &amp; DRESSING OF LEATHER, LEATHER GOODS &amp; FOOTWEAR</b>	
1 - 4.....	1
<b>20 WOOD &amp; WOOD PRODUCTS, EXCEPT FURNITURE</b>	
1 - 4.....	183
5 - 14.....	2
<b>21 PAPER &amp; PAPER PRODUCTS</b>	
1 - 4.....	3
5 - 14.....	1
<b>24 CHEMICALS &amp; CHEMICAL PRODUCTS</b>	
1 - 4.....	5
<b>25 RUBBER &amp; PLASTICS PRODUCTS</b>	
1 - 4.....	3
<b>26 OTHER NON-METALIC MINERAL PRODUCTS</b>	
1 - 4.....	37
5 - 14.....	1

(continued)

\* - MINING &amp; QUARRYING AND MANUFACTURING

TABLE 10: DISTRIBUTION OF ESTABLISHMENT\* & PERSONS ENGAGED BY DIVISIONAL  
SECRETARY DIVISION & PERSONS ENGAGED SIZE CLASS  
KURUNEGALA DISTRICT - RURAL SECTOR - 1995

D.S. DIVISION & INDUSTRY DIVISION	NO. OF ESTABLISHMENTS
<b>28 FABRICATED METAL PRODUCTS, EXCEPT MACHINERY &amp; EQUIPMENT</b>	
1 - 4.....	21
5 - 14.....	1
<b>29 MACHINERY &amp; EQUIPMENT N.B.C.</b>	
1 - 4.....	4
5 - 14.....	1
<b>36 MANU. OF FURNITURE, MANUFACTURING N.B.C.</b>	
1 - 4.....	21
<b>99 OTHER PRODUCT</b>	
1 - 4.....	1
<b>RASHAYAKAPURA</b>	
<b>14 OTHER MINING &amp; QUARRYING</b>	
1 - 4.....	49
5 - 14.....	4
15 & ABOVE.....	1
<b>15 FOOD PRODUCTS &amp; BEVERAGES</b>	
1 - 4.....	91
5 - 14.....	10
<b>16 TOBACCO PRODUCTS</b>	
1 - 4.....	8
<b>17 TEXTILES</b>	
1 - 4.....	22
<b>20 WOOD &amp; WOOD PRODUCTS, EXCEPT FURNITURE</b>	
1 - 4.....	25
5 - 14.....	1
<b>21 PAPER &amp; PAPER PRODUCTS</b>	
1 - 4.....	1
<b>24 CHEMICALS &amp; CHEMICAL PRODUCTS</b>	
1 - 4.....	2
<b>26 OTHER NON-METALIC MINERAL PRODUCTS</b>	
1 - 4.....	43
5 - 14.....	2
<b>28 FABRICATED METAL PRODUCTS, EXCEPT MACHINERY &amp; EQUIPMENT</b>	
1 - 4.....	5
<b>29 MACHINERY &amp; EQUIPMENT N.B.C.</b>	
5 - 14.....	3
<b>36 MANU. OF FURNITURE, MANUFACTURING N.B.C.</b>	
1 - 4.....	54
5 - 14.....	1
<b>RIDEGAMA</b>	
<b>14 OTHER MINING &amp; QUARRYING</b>	
1 - 4.....	12
5 - 14.....	23
15 & ABOVE.....	3
<b>15 FOOD PRODUCTS &amp; BEVERAGES</b>	
1 - 4.....	274
5 - 14.....	15
15 & ABOVE.....	2

\* - MINING &amp; QUARRYING AND MANUFACTURING

(continued)

**TABLE 10: DISTRIBUTION OF ESTABLISHMENT\* & PERSONS ENGAGED BY DIVISIONAL  
SECRETARY DIVISION & PERSONS ENGAGED SIZE CLASS  
KURUNEGALA DISTRICT - RURAL SECTOR - 1995**

D. S. DIVISION & INDUSTRY DIVISION	NO. OF ESTABLISHMENTS
<b>16 TOBACCO PRODUCTS</b>	
1 - 4.....	365
5 - 14.....	14
15 & ABOVE.....	16
<b>17 TEXTILES</b>	
1 - 4.....	39
5 - 14.....	7
15 & ABOVE.....	1
<b>18 WEARING APPEREL DRESSING &amp; DYING OF FUR</b>	
1 - 4.....	54
5 - 14.....	1
15 & ABOVE.....	3
<b>19 TRAINING &amp; DRESSING OF LEATHER, LEATHER GOODS &amp; FOOTWEAR</b>	
1 - 4.....	2
<b>20 WOOD &amp; WOOD PRODUCTS, EXCEPT FURNITURE</b>	
1 - 4.....	41
5 - 14.....	8
15 & ABOVE.....	1
<b>21 PAPER &amp; PAPER PRODUCTS</b>	
1 - 4.....	2
<b>24 CHEMICALS &amp; CHEMICAL PRODUCTS</b>	
1 - 4.....	5
<b>25 RUBBER &amp; PLASTICS PRODUCTS</b>	
1 - 4.....	6
5 - 14.....	1
15 & ABOVE.....	2
<b>26 OTHER NON-METALIC MINERAL PRODUCTS</b>	
1 - 4.....	102
5 - 14.....	32
<b>27 BASIC METAL INDUSTRIES</b>	
1 - 4.....	4
<b>28 FABRICATED METAL PRODUCTS, EXCEPT MACHINERY &amp; EQUIPMENT</b>	
1 - 4.....	21
<b>34 MOTOR VEHICLES, TRAILERS &amp; SEMI-TRAILERS</b>	
1 - 4.....	1
<b>36 MANU. OF FURNITURE, MANUFACTURING N.E.C.</b>	
1 - 4.....	97
5 - 14.....	5
<b>UDUBADDANA</b>	
<b>14 OTHER MINING &amp; QUARRYING</b>	
1 - 4.....	26
5 - 14.....	9
<b>15 FOOD PRODUCTS &amp; BEVRAGES</b>	
1 - 4.....	183
5 - 14.....	22
15 & ABOVE.....	7

(continued)

\* - MINING &amp; QUARRYING AND MANUFACTURING

TABLE 10: DISTRIBUTION OF ESTABLISHMENT\* & PERSONS ENGAGED BY DIVISIONAL  
SECRETARY DIVISION & PERSONS ENGAGED SIZE CLASS  
KURUNEGALA DISTRICT - RURAL SECTOR - 1995

D.S.DIVISION & INDUSTRY DIVISION	NO.OF ESTABLISHMENTS
<b>16 TOBACCO PRODUCTS</b>	
1 - 4.....	1
<b>17 TEXTILES</b>	
1 - 4.....	30
5 - 14.....	19
15 & ABOVE.....	20
<b>18 WEARING APPEREL DRESSING &amp; DYEING OF FUR</b>	
1 - 4.....	52
5 - 14.....	1
<b>19 TRAINING &amp; DRESSING OF LEATHER, LEATHER GOODS &amp; FOOTWEAR</b>	
1 - 4.....	1
<b>20 WOOD &amp; WOOD PRODUCTS, EXCEPT FURNITURE</b>	
1 - 4.....	55
5 - 14.....	4
<b>21 PAPER &amp; PAPER PRODUCTS</b>	
1 - 4.....	2
5 - 14.....	1
<b>24 CHEMICALS &amp; CHEMICAL PRODUCTS</b>	
1 - 4.....	11
5 - 14.....	1
<b>25 RUBBER &amp; PLASTICS PRODUCTS</b>	
1 - 4.....	1
5 - 14.....	1
<b>26 OTHER NON-METALIC MINERAL PRODUCTS</b>	
1 - 4.....	202
5 - 14.....	19
15 & ABOVE.....	2
<b>27 BASIC METAL INDUSTRIES</b>	
1 - 4.....	1
<b>28 FABRICATED METAL PRODUCTS, EXCEPT MACHINERY &amp; EQUIPMENT</b>	
1 - 4.....	25
<b>36 MANU.OF FURNITURE, MANUFACTURING N.E.C.</b>	
1 - 4.....	68
<b>37 RECYCLING</b>	
1 - 4.....	12
5 - 14.....	3
15 & ABOVE.....	1
<b>WARIYAPOLA</b>	
<b>14 OTHER MINING &amp; QUARRYING</b>	
1 - 4.....	25
5 - 14.....	11
15 & ABOVE.....	2
<b>15 FOOD PRODUCTS &amp; BEVERAGES</b>	
1 - 4.....	159
5 - 14.....	9

(continued)

\* - MINING &amp; QUARRYING AND MANUFACTURING

**TABLE 10: DISTRIBUTION OF ESTABLISHMENT\* & PERSONS ENGAGED BY DIVISIONAL SECRETARY DIVISION & PERSONS ENGAGED SIZE CLASS KURUNEGALA DISTRICT - RURAL SECTOR - 1995**

D.S.DIVISION & INDUSTRY DIVISION	NO.OF ESTABLISHMENTS
<b>16 TOBACCO PRODUCTS</b>	
1 - 4.....	6
5 - 14.....	1
15 & ABOVE.....	3
<b>17 TEXTILES</b>	
1 - 4.....	30
5 - 14.....	7
15 & ABOVE.....	6
<b>18 WEARING APPEREL DRESSING &amp; DYEING OF FUR</b>	
1 - 4.....	48
5 - 14.....	3
15 & ABOVE.....	1
<b>19 TRAINING &amp; DRESSING OF LEATHER, LEATHER GOODS &amp; FOOTWEAR</b>	
1 - 4.....	1
<b>20 WOOD &amp; WOOD PRODUCTS, EXCEPT FURNITURE</b>	
1 - 4.....	110
5 - 14.....	9
<b>22 PUBLISHING, PRINTING &amp; REPRODUCTION OF RECORDED MEDIA</b>	
1 - 4.....	1
<b>24 CHEMICALS &amp; CHEMICAL PRODUCTS</b>	
1 - 4.....	1
5 - 14.....	1
<b>25 RUBBER &amp; PLASTICS PRODUCTS</b>	
1 - 4.....	1
<b>26 OTHER NON-METALIC MINERAL PRODUCTS</b>	
1 - 4.....	37
5 - 14.....	10
15 & ABOVE.....	1
<b>28 FABRICATED METAL PRODUCTS, EXCEPT MACHINERY &amp; EQUIPMENT</b>	
1 - 4.....	33
5 - 14.....	1
<b>32 RADIO, TELEVISION &amp; COMMUNICATION EQUIPMENT &amp; APPARATUS</b>	
1 - 4.....	1
<b>34 MOTOR VEHICLES, TRAILERS &amp; SEMI-TRAILERS</b>	
5 - 14.....	2
<b>36 MANU. OF FURNITURE, MANUFACTURING N.B.C.</b>	
1 - 4.....	21
5 - 14.....	1
15 & ABOVE.....	2
<b>99 OTHER PRODUCT</b>	
1 - 4.....	2
<b>WEBRAMBUGEDARA</b>	
<b>14 OTHER MINING &amp; QUARRYING</b>	
1 - 4.....	14
5 - 14.....	1
<b>15 FOOD PRODUCTS &amp; BEVERAGES</b>	
1 - 4.....	116
5 - 14.....	5
15 & ABOVE.....	2

(continued)

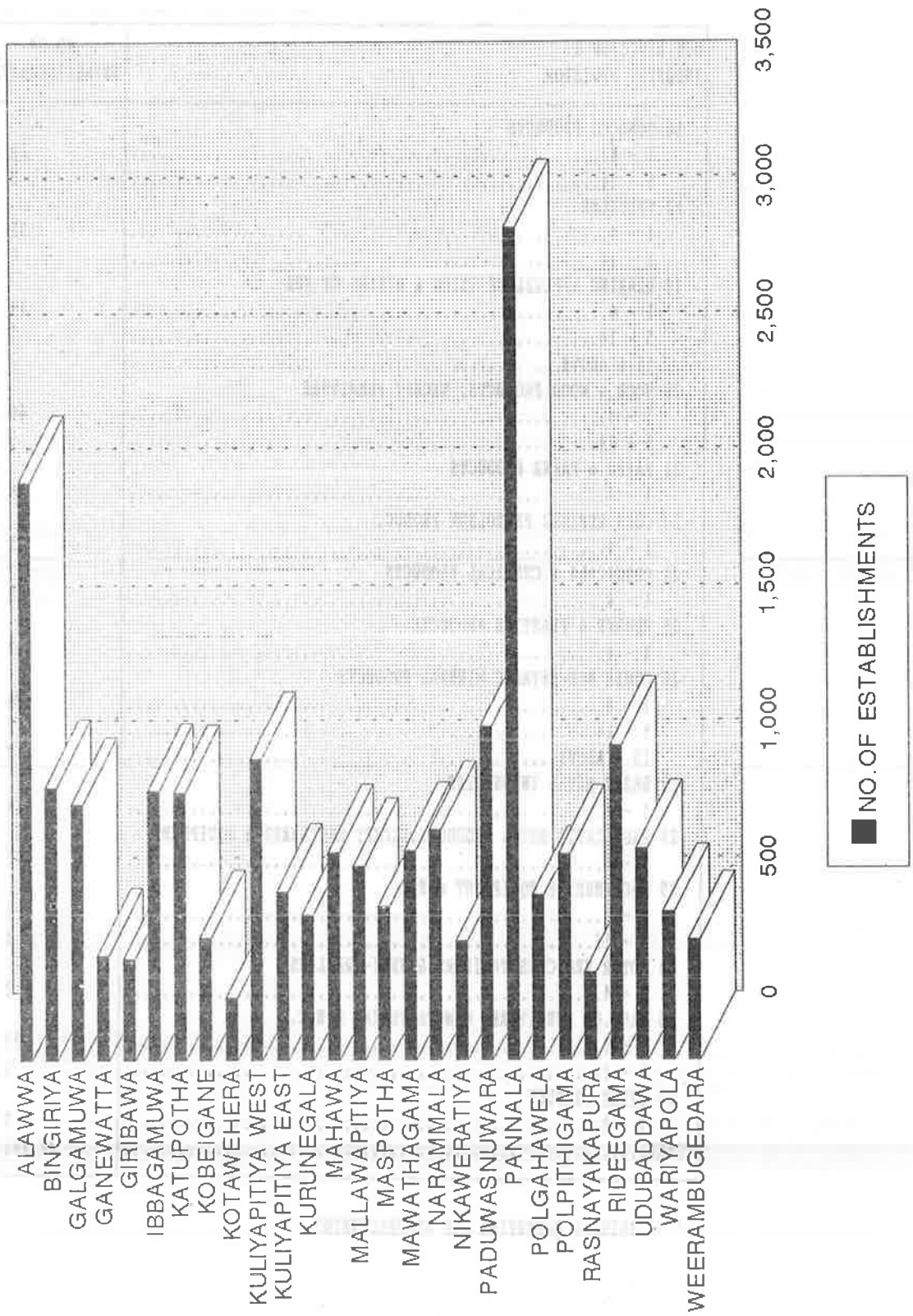
TABLE 10: DISTRIBUTION OF ESTABLISHMENT\* & PERSONS ENGAGED BY DIVISIONAL  
SECRETARY DIVISION & PERSONS ENGAGED SIZE CLASS  
KURUNEGALA DISTRICT - RURAL SECTOR - 1995

D.S.DIVISION & INDUSTRY DIVISION	NO.OF ESTABLISHMENTS
<b>16 TOBACCO PRODUCTS</b>	
1 - 4.....	23
5 - 14.....	3
<b>17 TEXTILES</b>	
1 - 4.....	31
5 - 14.....	4
<b>18 WEARING APPEREL DRESSING &amp; DYEING OF FUR</b>	
1 - 4.....	19
5 - 14.....	1
15 & ABOVE.....	2
<b>20 WOOD &amp; WOOD PRODUCTS, EXCEPT FURNITURE</b>	
1 - 4.....	60
5 - 14.....	9
<b>21 PAPER &amp; PAPER PRODUCTS</b>	
1 - 4.....	4
<b>23 COKE, REFINED PETROLEUM PRODUC.</b>	
1 - 4.....	1
<b>24 CHEMICALS &amp; CHEMICAL PRODUCTS</b>	
1 - 4.....	6
<b>25 RUBBER &amp; PLASTICS PRODUCTS</b>	
1 - 4.....	2
<b>26 OTHER NON-METALIC MINBRAL PRODUCTS</b>	
1 - 4.....	94
5 - 14.....	2
15 & ABOVE.....	2
<b>27 BASIC METAL INDUSTRIES</b>	
1 - 4.....	4
<b>28 FABRICATED METAL PRODUCTS, EXCEPT MACHINERY &amp; EQUIPMENT</b>	
1 - 4.....	7
<b>29 MACHINERY &amp; EQUIPMENT N.E.C.</b>	
1 - 4.....	1
5 - 14.....	1
<b>34 MOTOR VEHICLES, TRAILERS &amp; SEMI-TRAILERS</b>	
1 - 4.....	2
<b>36 MANU.OF FURNITURE, MANUFACTURING N.E.C.</b>	
1 - 4.....	27
5 - 14.....	1
<b>99 OTHER PRODUCT</b>	
1 - 4.....	1
<b>TOTAL.....</b>	<b>22,762</b>

\* - MINING & QUARRYING AND MANUFACTURING

INFORMATION OF ESTABLISHMENTS, A RURAL SECTOR BY DIVISION  
RURAL SECTOR & POLYMER SECTOR DATA YEAR  
ESTABLISHMENTS DATA - 1995

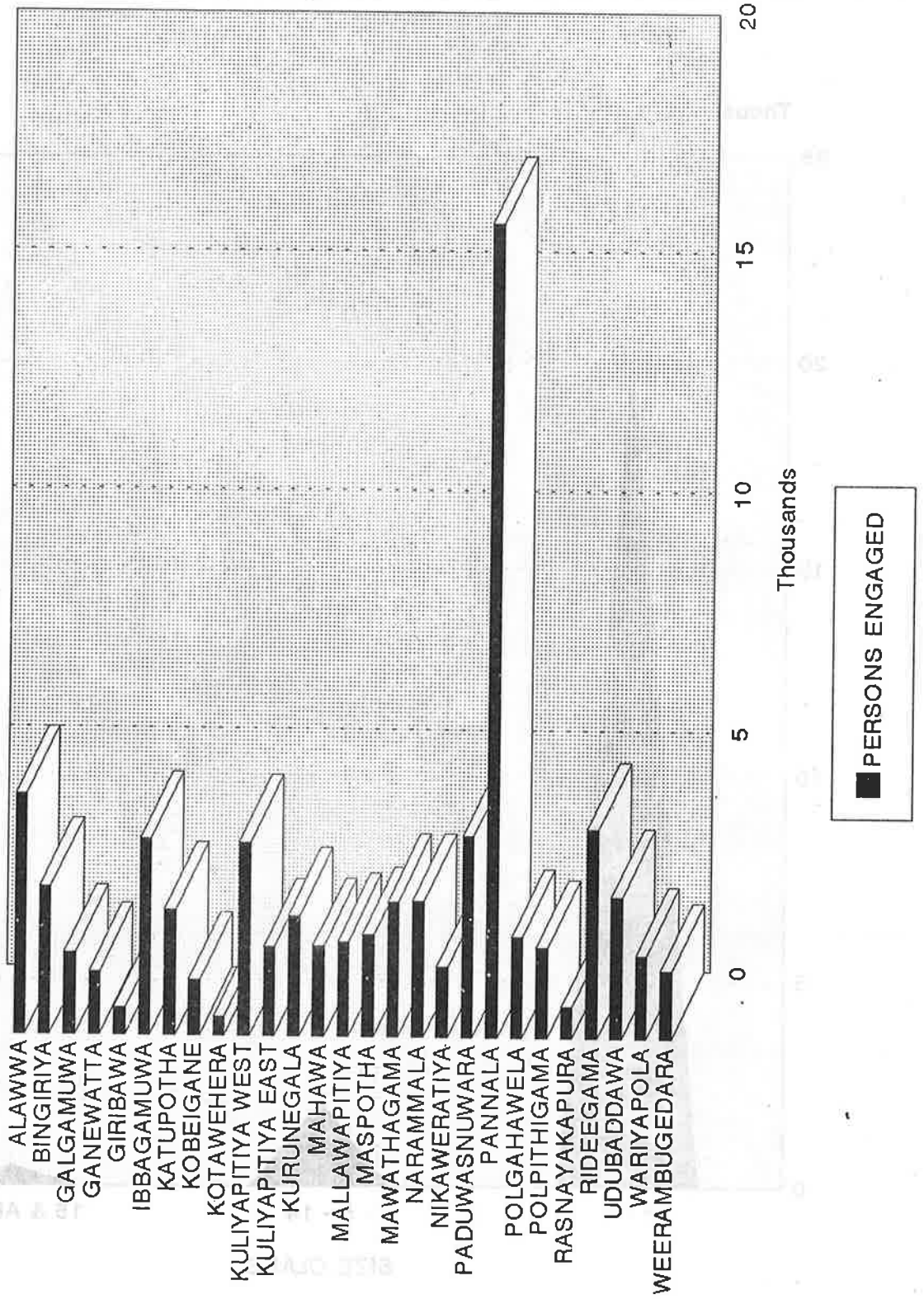
# NO.OF ESTABLISHMENTS BY D.S.DIVISION RURAL SECTOR - 1995 KURUNEGALA DISTRICT



# PERSONS ENGAGED BY D.S.DIVISION

RURAL SECTOR - 1995

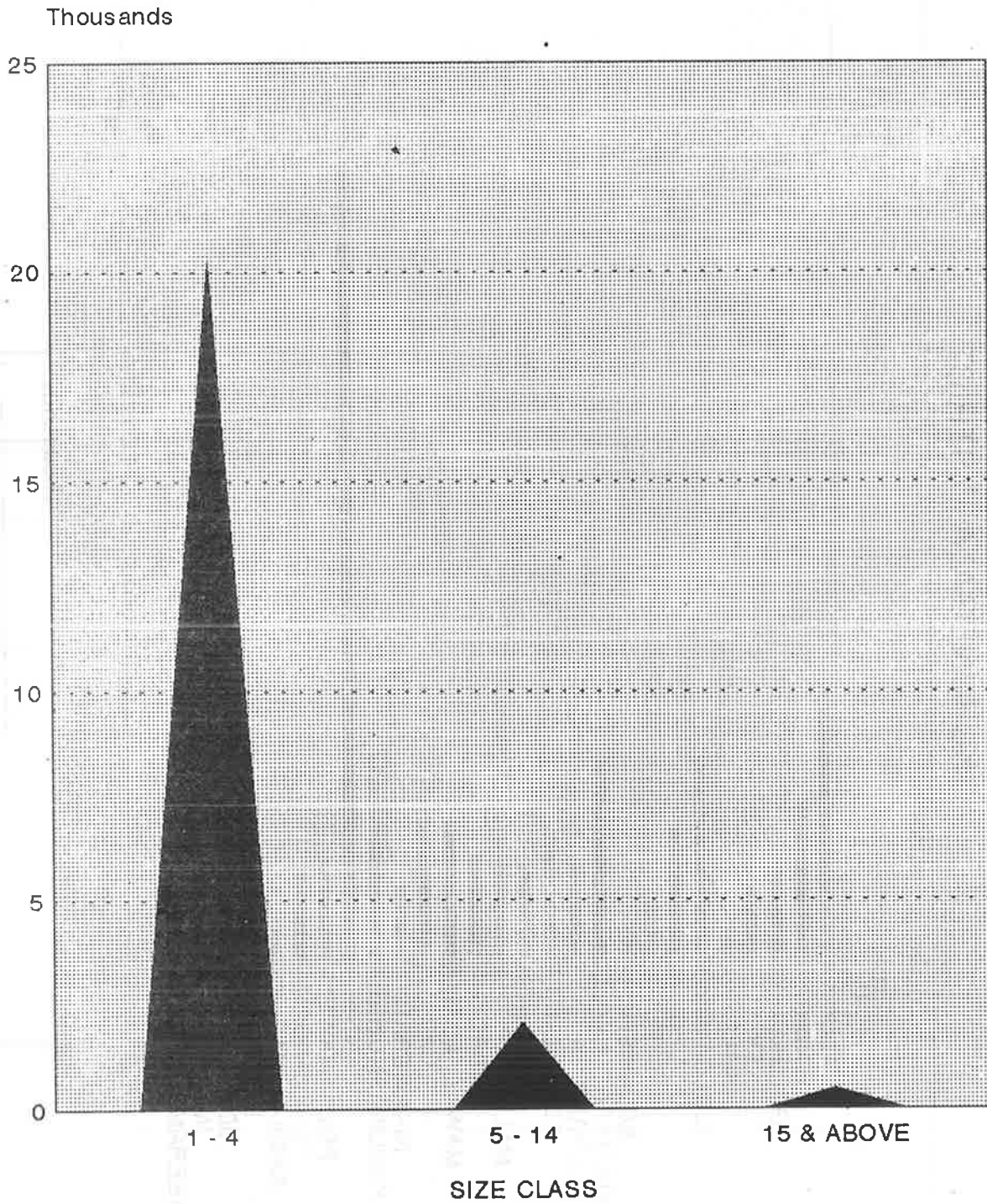
KURUNEGALA DISTRICT





# NO.OF ESTABLISHMENT BY PERSONS ENGAGED SIZE CLASS

RURAL SECTOR - 1995  
KURUNEGALA DISTRICT

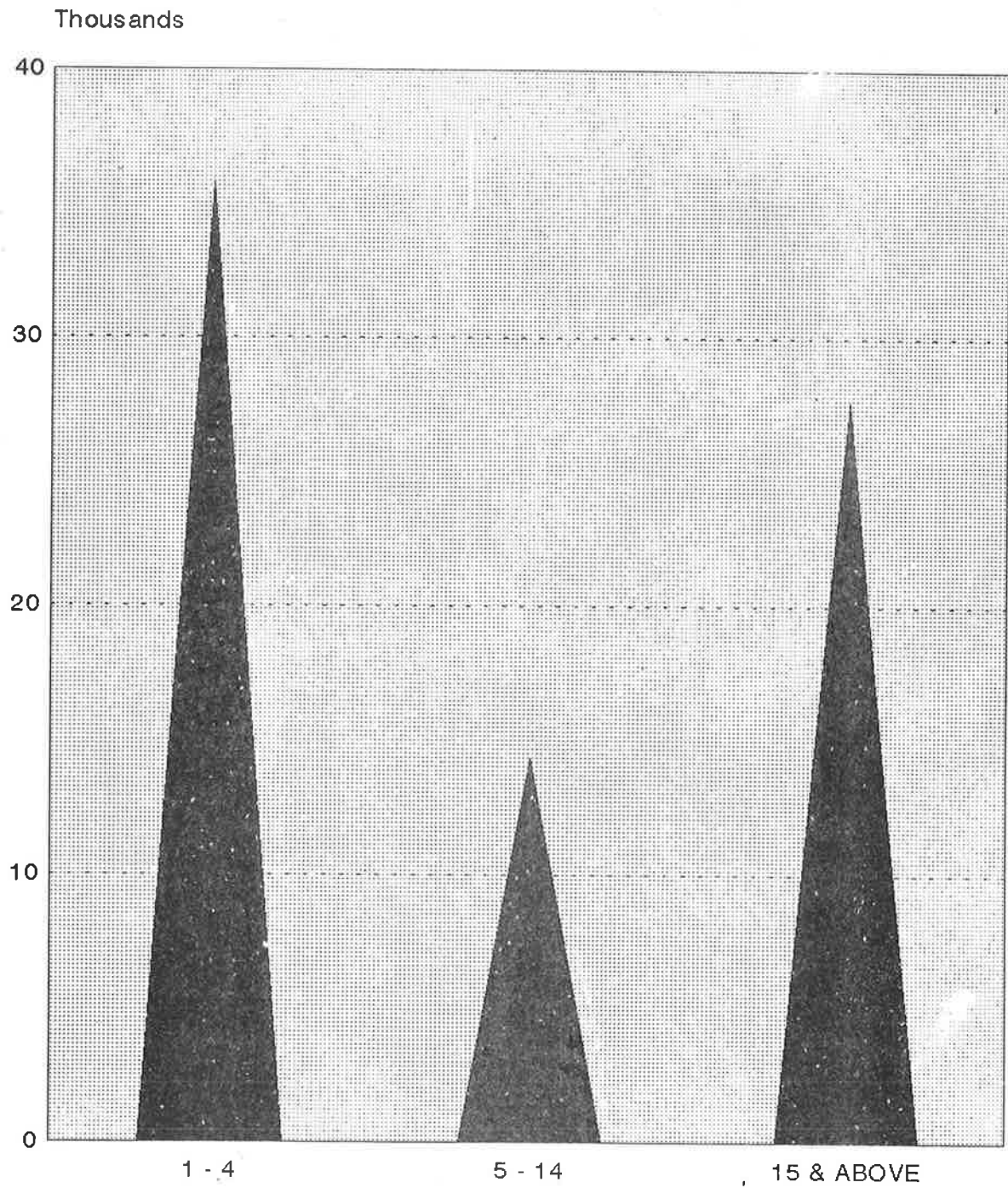


▲ NO.OF ESTABLISHMENTS

# PERSONS ENGAGED BY SIZE CLASS

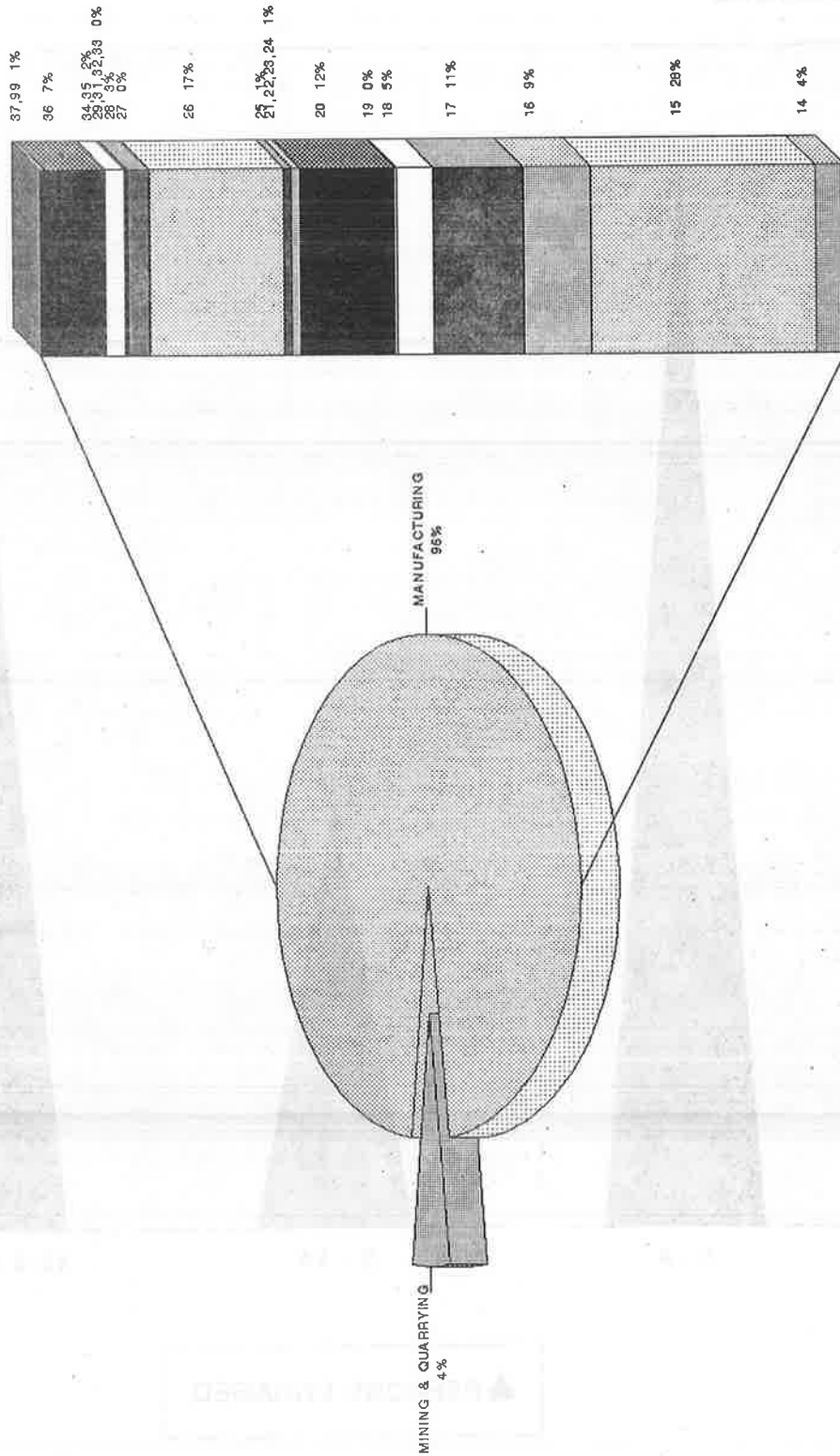
## RURAL SECTOR - 1995

### KURUNEGALA DISTRICT



▲ PERSONS ENGAGED

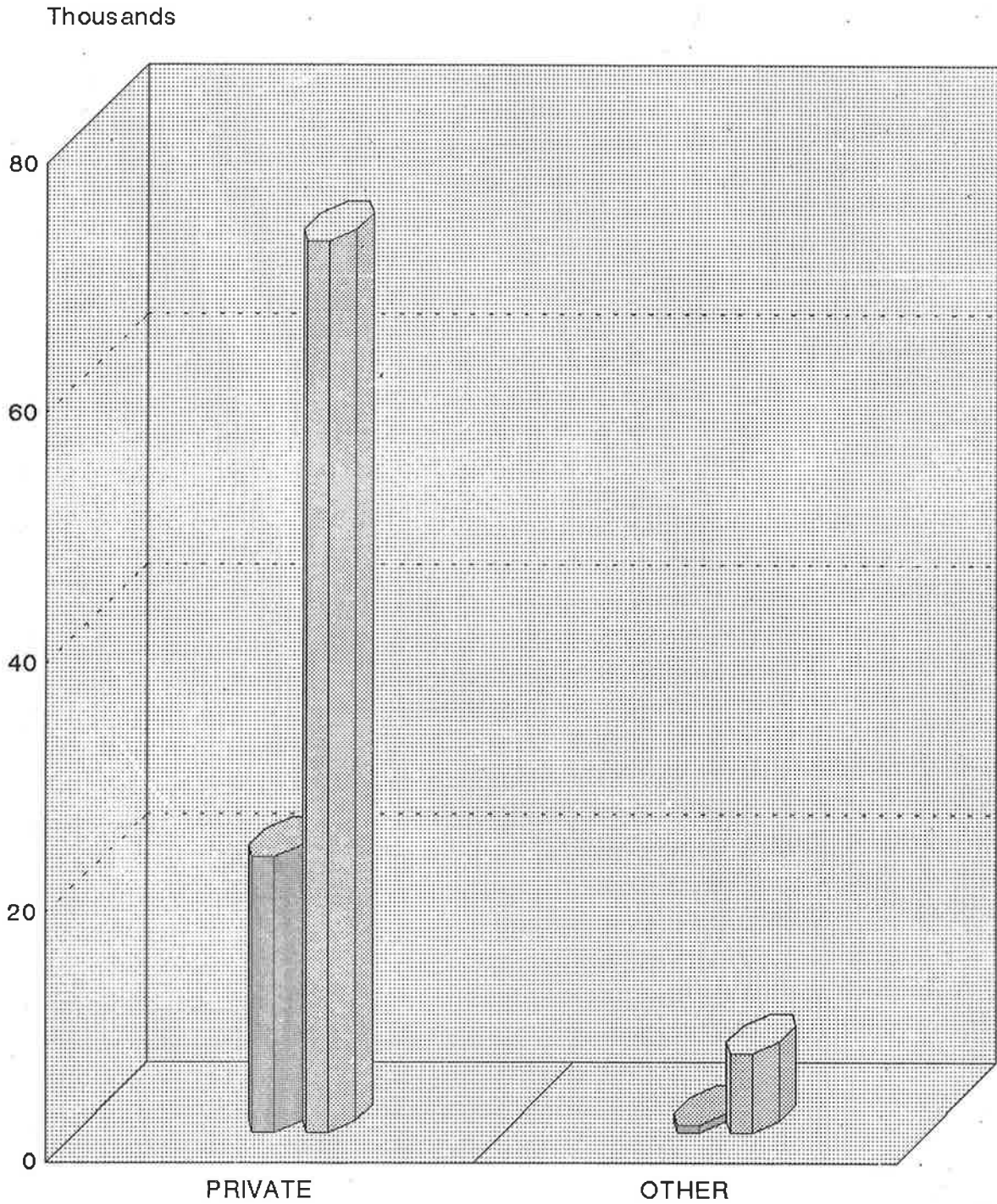
# NO.OF ESTABLISHMENTS BY INDUSTRY DIVISION RURAL SECTOR - 1995 KURUNEGALA DISTRICT



# NO.OF ESTABLISHMENT & PERSONS ENGAGED BY TYPE OF SECTOR

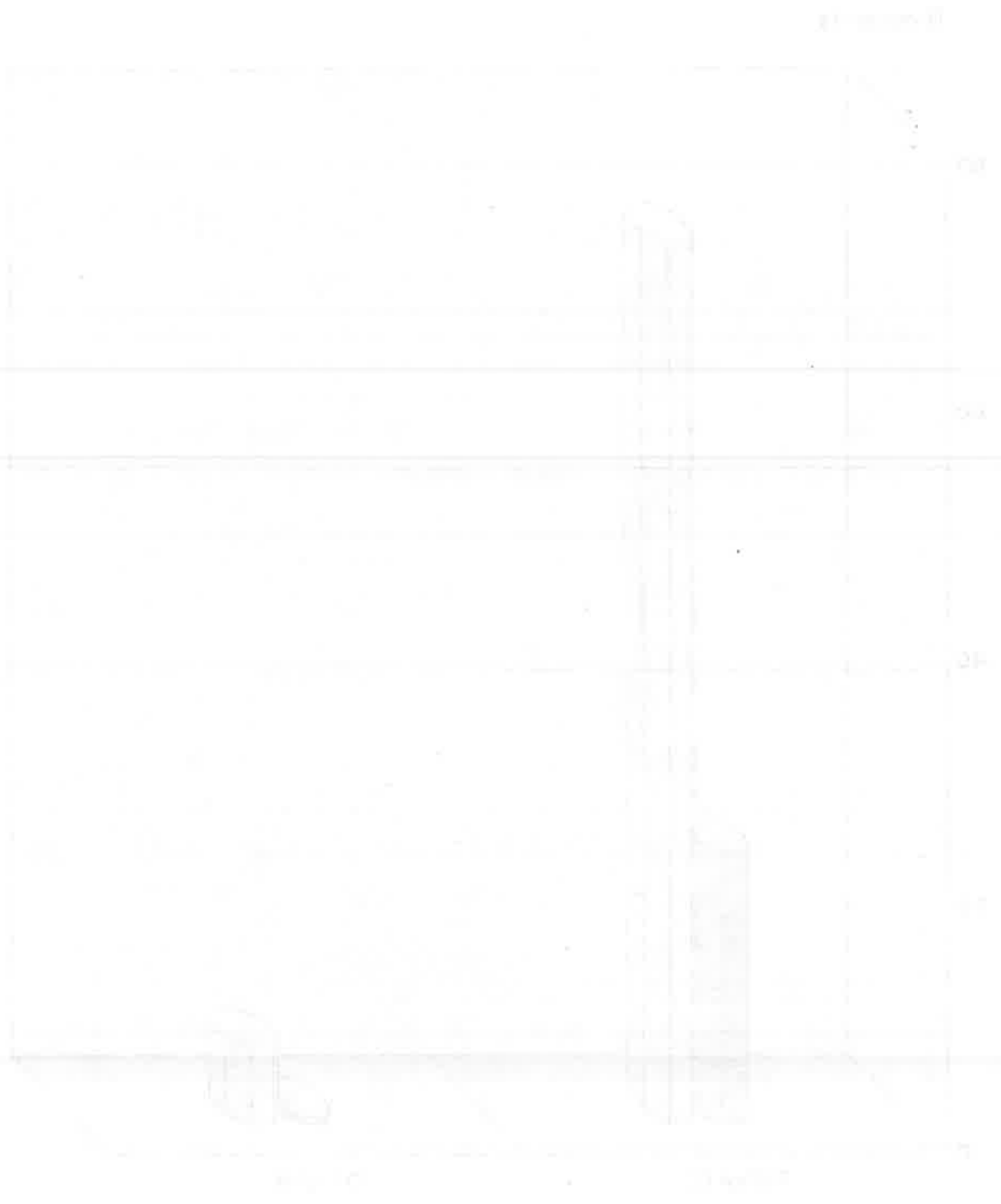
## RURAL SECTOR - 1995

### KURUNEGALA DISTRICT



■ NO.OF ESTABLISHMENT    ▨ PERSONS ENGAGED

NO OF ESTABLISHMENT & PERSONS ENGAGED BY TYPE OF REGION



பட்டினம், கிராமம் & நகரம் வாரியம் வாரியம் வாரியம்





L   
 ലോക്ക്  
 നമ്പർ

**ජනලේඛන හා සංඛ්‍යාලේඛන දෙපාර්තමේන්තුව**  
**කෘෂිකාර්මික නොවන ආර්ථික කටයුතු ලැයිස්තුගත කිරීම - 1985**

(පියවර ගොඩනැගිලි පදනා)

<p>01. දිස්ත්‍රික්කය:..... <input type="checkbox"/></p> <p>02. ප්‍රාදේශීය ලේකම් කොට්ඨාසය:..... <input type="checkbox"/></p> <p>03. මැතිවරණ කොට්ඨාසය:..... <input type="checkbox"/></p> <p>04. ග්‍රාම නිලධාරී කොට්ඨාසය:..... <input type="checkbox"/></p> <p>05. අංශය: 1. නාගරික 2. ග්‍රාමීය 3. වතු <input type="checkbox"/></p> <p>06. ම.න.ස./ න.ස./ ප්‍රාදේශීය සහාය:..... <input type="checkbox"/></p> <p>07. ප්‍රාදේශීය ඒකකය තුළ පිහිටි නාගරික කොට්ඨාස/ ගම්/ වතු වල නම්:</p> <table style="width: 100%; border-collapse: collapse;"> <tr> <td style="width: 50%;">1 .....</td> <td style="width: 50%;">7 .....</td> </tr> <tr> <td>2 .....</td> <td>8 .....</td> </tr> <tr> <td>3 .....</td> <td>9 .....</td> </tr> <tr> <td>4 .....</td> <td>10 .....</td> </tr> <tr> <td>5 .....</td> <td>11 .....</td> </tr> <tr> <td>6 .....</td> <td>12 .....</td> </tr> </table>	1 .....	7 .....	2 .....	8 .....	3 .....	9 .....	4 .....	10 .....	5 .....	11 .....	6 .....	12 .....	<table border="1" style="width: 100%; border-collapse: collapse;"> <thead> <tr> <th style="width: 50%;">විස්තරය</th> <th style="width: 20%;">පිටු ගණන</th> <th style="width: 30%;">ඒකක ගණන</th> </tr> </thead> <tbody> <tr> <td>1. නිවාස හා අනෙකුත් ගොඩනැගිලි (L)</td> <td align="center"><input type="checkbox"/></td> <td align="center"><input type="checkbox"/></td> </tr> <tr> <td>2. කාර්මාන්ත ගණන (L1)</td> <td align="center"><input type="checkbox"/></td> <td align="center"><input type="checkbox"/></td> </tr> <tr> <td>3. වෙළෙඳ හා සේවා ආයතන</td> <td align="center"><input type="checkbox"/></td> <td align="center"><input type="checkbox"/></td> </tr> <tr> <td>4. සාදන ලද ගොඩනැගිලි ගණන (L3)</td> <td align="center"><input type="checkbox"/></td> <td align="center"><input type="checkbox"/></td> </tr> <tr> <td>5. සාමාන්‍යයෙන් පදිංචි පුද්ගලයින් ගණන</td> <td align="center"><input type="checkbox"/></td> <td align="center"><input type="checkbox"/></td> </tr> </tbody> </table>	විස්තරය	පිටු ගණන	ඒකක ගණන	1. නිවාස හා අනෙකුත් ගොඩනැගිලි (L)	<input type="checkbox"/>	<input type="checkbox"/>	2. කාර්මාන්ත ගණන (L1)	<input type="checkbox"/>	<input type="checkbox"/>	3. වෙළෙඳ හා සේවා ආයතන	<input type="checkbox"/>	<input type="checkbox"/>	4. සාදන ලද ගොඩනැගිලි ගණන (L3)	<input type="checkbox"/>	<input type="checkbox"/>	5. සාමාන්‍යයෙන් පදිංචි පුද්ගලයින් ගණන	<input type="checkbox"/>	<input type="checkbox"/>
1 .....	7 .....																														
2 .....	8 .....																														
3 .....	9 .....																														
4 .....	10 .....																														
5 .....	11 .....																														
6 .....	12 .....																														
විස්තරය	පිටු ගණන	ඒකක ගණන																													
1. නිවාස හා අනෙකුත් ගොඩනැගිලි (L)	<input type="checkbox"/>	<input type="checkbox"/>																													
2. කාර්මාන්ත ගණන (L1)	<input type="checkbox"/>	<input type="checkbox"/>																													
3. වෙළෙඳ හා සේවා ආයතන	<input type="checkbox"/>	<input type="checkbox"/>																													
4. සාදන ලද ගොඩනැගිලි ගණන (L3)	<input type="checkbox"/>	<input type="checkbox"/>																													
5. සාමාන්‍යයෙන් පදිංචි පුද්ගලයින් ගණන	<input type="checkbox"/>	<input type="checkbox"/>																													

ලැයිස්තුගත කරන නිලධාරියාගේ නම: .....

අත්සන: .....

දිනය: .....

අධ්‍යක්ෂ නිලධාරියාගේ නම: .....

අත්සන: .....

දිනය: .....



L3   
 பிடி   
 ஏ-காடி

**ජනලේඛන හා සංඛ්‍යාලේඛන දෙපාර්තමේන්තුව**  
**කෘෂිකාර්මික නොවන ආර්ථික කටයුතු ලැයිස්තුගත කිරීම - 1995**  
 (ගොඩනැගිලි ඉදිකිරීම සඳහා - 1995 ජනවාරි 01 සිට ජූනි 30 දක්වා)

01. දිස්ත්‍රික්කය:.....    04. අංශය: 1. නාගරික 2. ග්‍රාමීය 3. වතු

02. ප්‍රාදේශීය ලේකම් කොට්ඨාශය:.....   05. ම.න.ස./න.ස./ප්‍රාදේශීය සභාව:.....

03. ග්‍රාම නිලධාරී කොට්ඨාශ අංකය:..... නම:.....

1	2	3	4	5	6	7	8
(L) ලේඛනයේ අනුමුඛ අංකය	මෙම ස්ථානයේ පිළිබඳ විස්තරය (එනම් ස්ථානයේ ඉදිකිරීම් කිහිපයක් පිළිකර ඇති විටකදී ප්‍රධාන ඉදිකිරීම් වර්ග අතර අනුපිළිවෙලින් ලියන්න.)	සා.ක.ස.	1995 ජනවාරි 01 සිට ජූනි 30 තුළ කරන ලද වැඩ වෙනුවෙන් දැක්වූ ලදී (ඇස්තමේන්තු කරන ලද) මුළු වියදම (දැඩියල්)	ඉදිකිරීම් සඳහා මුදල් භාරදීමේ රජයේ -1 වියදම්-2 වෙනත් -3 අදාළ සේකය ලියන්න.	විස්තර (මෙම ස්ථානය හඳුනා ගැනීම සඳහා ප්‍රමාණවත් විස්තර සඳහන් කරන්න.)	ඉදිකිරීම් කටයුතු කරවන ආයතනයන්ගේ (කොන්ත්‍රාත්කරු/ දැඩිකරු) නම ලිවිය හැකි විවෘත අංකය	වෙනත් කරුණු
1.							
2.							
3.							
1.							
2.							
3.							
1.							
2.							
3.							
1.							
2.							
3.							
1.							
2.							
3.							
1.							
2.							
3.							









**PUBLICATIONS OF THE  
DEPARTMENT OF CENSUS AND STATISTICS  
AVAILABLE FOR SALES**

**AT  
THE SAMPLE SURVEY DIVISION,  
DEPARTMENT OF CENSUS AND STATISTICS,  
16/7, ALBERT CRESCENT, COLOMBO 07.  
Telephone 695962 - Ext. 17.**

Name of Publication	** GENERAL PURPOSE PUBLICATION *	Year	Price
1. Statistical Pocket Book in English		1988	46.00
2. Statistical Pocket Book in English		1990	39.00
3. Statistical Pocket Book in English		1994	50.00
4. Statistical Pocket Book in English		1995	50.00
5. Statistical Pocket Book in English		1997	52.50
6. Statistical Pocket Book in English		1998	53.00
7. Statistical Pocket Book in Sinhala and Tamil		1987	46.00
8. Statistical Pocket Book in Sinhala and Tamil		1988	79.00
9. Statistical Pocket Book in Sinhala and Tamil		1990	161.00
10. Statistical Pocket Book in Sinhala and Tamil		1991	175.00
11. Statistical Pocket Book in Sinhala and Tamil		1993	189.00
12. Statistical Pocket Book in Sinhala and Tamil		1994	119.00
13. Statistical Abstract in English		1989	203.00
14. Statistical Abstract in English		1992	285.00
15. Statistical Abstract in English		1993	300.00
16. Statistical Abstract in English		1996	248.00
17. Statistical Abstract in English		1997	210.00
18. Administration Report of Director General Census & Statistics		1995	50.00
19. Administration Report of Director General Census & Statistics		1996	50.00
20. Administration Report of Director General Census & Statistics		1997	53.00
<b>Population and Demography</b>			
1. Census of Population and Housing - (Physically disabled person)		1981	20.00
2. Census of Population and Housing - District Report (each)		1981	50.00
3. Sri Lanka Demographic and Health Survey		1993	310.00
4. Demographic Survey 1994 Sri Lanka (Report on Demographic Characteristics of the Population) Release 3		1994	124.00
5. Demographic Survey 1994 Sri Lanka (Report on Demographic and Housing Characteristics) Release 4		1994	110.00
6. Grama Niladhari Divisions of Sri Lanka		1996	295.00
<b>Agriculture</b>			
1. Estimation of Sown Area under Paddy Cultivation (Alternative to complete enumeration)			19.50
2. Food Balance Sheet (Revised Series)		1991/95	33.00
3. Food Balance Sheet (Revised Series)		1992/96	35.00
4. Food Balance Sheet (Revised Series)		1992/97	39.00
5. Paddy Statistics (Seasonal Report) each			20.00
6. Rubber Cultivation in Sri Lanka		1993	40.00
7. States and Role of Cinnamon Cultivation in Sri Lanka		1993	70.00
8. Cardamon "The Queen of spices" and Distribution in Sri Lanka		1993	68.00
9. Rambutan Cultivation in Sri Lanka		1993	43.00
10. Sowing and Harvesting periods of Paddy Cultivation in Sri Lanka		1994	80.00
11. Agricultural Statistics of Sri Lanka		1995	97.00
12. Paddy Statistics of Sri Lanka		1952/96	
a) With diskette			241.00
b) Without diskette			191.00

## 13. Agricultural crops and Livestock survey (Preliminary Reports)

1.	Badulla	1992/93	80.00
2.	Colombo	1992/93	56.50
3.	Galle	1992/93	70.00
4.	Hambantota	1992/93	75.00
5.	Kalutara	1992/93	78.00
6.	Kegalle	1992/93	56.00
7.	Kurunegala	1992/93	160.00
8.	Matara	1992/93	61.00
9.	Moneragala	1992/93	53.00
10.	Ratnapura	1992/93	85.00
11.	Mahaweli System 'H'	1993/94	40.00
12.	Puttalam	1993/94	71.00
13.	Polonnaruwa	1993/94	44.00
14.	Anuradhapura	1993/94	90.50

## Trade and Industry

1.	Annual Survey of Industries	1991	30.00
2.	Annual Survey of Industries	1992/93/94 (each)	37.00
3.	Annual Survey of Industries	1995/96/97(each)	39.00
4.	Annual survey of Industries (Interim Report)	1996	28.00
5.	Annual survey of construction Industries	1993/94	64.00

## National Accounts

1.	National Accounts of Sri Lanka	1993	102.00
2.	National Accounts of Sri Lanka	1994	111.00
3.	National Accounts of Sri Lanka (Sinhala)	1994	123.00
4.	National Accounts of Sri Lanka (Sinhala)	1995	143.00
5.	National Accounts of Sri Lanka	1996	150.00
6.	National Accounts of Sri Lanka	1997	165.00

## Prices and Wages

1.	Bulletin of Selected Retail Prices	1975/90	62.50
2.	Bulletin of Selected Retail Prices	1975/91	60.00
3.	Bulletin of Selected Retail Prices	1975/92	77.00
4.	Bulletin of Selected Retail Prices	1995	127.00
5.	Bulletin of Selected Retail Prices	1996	124.00
6.	Weekly Retail Prices - (Colombo City)		
	i. Bulletin No. II	1991/92	30.00
	ii. Bulletin No. III	1992/93	25.00
	iii. Bulletin No. IV	1993/94	43.50
	iv. Bulletin No. V	1995	38.00
	v. Bulletin No. VI	1996	43.00

## Survey Report

1.	Quarterly Report of the Sri Lanka Labour Force Survey	1993	40.00
	i. Quarterly Report each	1994	45.00
	ii. Quarterly Report each	1995	55.00
	iii. 1st Quarter	1995	65.00
	iv. 2nd Quarter	1995	64.00
	v. 3rd and 4th Quarter each	1996	64.00
	vi. Quarterly Report (each)	1997	69.00
	vii. Quarterly Report (each)	1998	70.00
	viii. 1st Quarter	1992	50.00
2.	Sri Lanka Labour Force Survey (Sinhala)	1993	122.00
3.	Provincial Profile of Labour Force Sri Lanka	1996	73.00
4.	Provincial Profile of Labour Force Sri Lanka		

## Other Reports

1.	Women and Men in Sri Lanka (Tamil)		133.00
2.	Changing Role of Women in Sri Lanka (English)		200.00
3.	Statistical Data Sheets 1996 (Sinhala, Tamil, English) (each)		5.00
4.	Listing of Non-agricultural Economic Activities (Rural Sector)	1995	29.00









ISBN 955 - 577 - 256 - 8

Printed by: Printing Division, Dept. of Census & Statistics.