



SRI LANKA

**LISTING OF NON - AGRICULTURAL
ECONOMIC ACTIVITIES
1995**

Rural Sector

District Report

Gampaha District

*Department of census and statistics
Ministry of finance and planning*

**LISTING OF NON - AGRICULTURAL
ECONOMIC ACTIVITIES
1995**

Rural Sector

District Report

Gampaha District

தமிழ்நாடு அரசுப் பேரவை

புத்தக வெளியீட்டுத் துறை

1999

பதிப்புரிமை

ISBN 955 - 577 - 248 - 7

பதிப்புரிமை

பதிப்புரிமை

Published in 1999

பதிப்புரிமை

PREFACE

The Department of Census and Statistics carried out a comprehensive listing of Non Agricultural Economic Activities in 1995 and covered rural areas of all provinces except Northern and Eastern provinces.

This report which includes basic Industrial statistics in the rural sector of the Gampaha District is prepared to serve the immediate needs of the Grama Niladhari Division and Divisional Secretariat Divisional level data users. It is planned to publish the similar reports for all relevant Districts and the all island report.

I hope that the information presented in this document, though it is provisional will be of immense use to planners and policy makers.



A.G.W. Nanayakkara.
Director General.
Dept. of Census & Statistics,
No. 15/12,
Maitland Crescent,
Colombo 07.
27th. July 1999.

ACKNOWLEDGEMENT

The listing operation of Non- Agricultural Economic Activities was undertaken by the Department of Census & Statistics which was funded by Institute of Construction Training and Development (ICTAD). This operation was planned mainly to establish a frame of building material industries and to ascertain the out put of the construction sector.

The planning, execution and successful completion of the entire listing operation were performed by the staff of Industry and Construction Division of the Department.

Enumerators who did the listing operation at the Grama Niladhari Division level, Statistical Investigators who were responsible for data collection and the District Statisticians / Statistical Officers who cordinated the activity are acknowledged.

The staff of the Data Processing Division and Statistical Investigators attached to some District offices who were engaged in computer data entry activities are much appreciated.

Special thanks are due to District Secretary and Divisional Secretaries of the District whose fullest co-operation was very vital to the successful completion of this operation.

Preparation of this publication was done by Mr. D.S.S.Gunawardana Statistical Officer using Apple Mackintosh and the statistical tables were obtained by Mr. R.D.N. Premawansa Statistical Investigator using SPSS PC+.

Acknowledgements are also due to Mr. K. D. Siripala, Deputy Director and his staff for printing this report within a short period.

The co-operation given by the respondents is also much appreciated.

CONTENTS

	PAGE
1. PREFACE	
2. ACKNOWLEDGEMENT	
3. CONTENTS	
A. INTRODUCTION	1
B. COVERAGE	1
C. LISTING OPERATION	2
D. PREPARATION OF TABLES	2
4. TABLES	5 - 34
5. CHARTS	35 - 40
6. ANNEX	41

Table Nos:

1. No. of Establishments & persons engaged by Divisional Secretary Division 1995.	5
2. No. of Establishments & persons engaged by Divisional Secretary Division & by Sector 1995.	5
3. No. of Establishments & persons engaged by Divisional Secretary Division & by Size Class 1995.	6
4. No. of Establishments & persons engaged by Major Industry Division (ISIC 1 digit level) 1995.	6
5. No. of Establishments & persons engaged by Industry Division. (ISIC 2 digit level) 1995.	7
6. No. of Establishments & persons engaged by Major Industry Group (ISIC 3 digit level) 1995.	8
7. No. of Establishments & persons engaged by Industry Group (ISIC 4 digit level) 1995.	9

Table Nos:	Page
8. No. of Establishments & persons engaged by Divisional Secretary Division & Major Industry Division (ISIC 1 digit level) 1995.	11
9. No. of Establishments & persons engaged by Divisional Secretary Division & Industry Division (ISIC 2 digit level) 1995.	12
10. Distribution of Establishments & persons engaged by Divisional Secretary Division & persons engaged size class 1995.	18

Chart Nos:

1. No. of Establishments by Divisional Secretary Division 1995.	35
2. Persons engaged by Divisional Secretary Division 1995.	36
3. No. of Establishments by persons engaged size class 1995.	37
4. Persons engaged by size class 1995.	38
5. No. of Establishments by Industry Division 1995.	39
6. No. of Establishments & persons engaged by Type of Sector 1995.	40

Listing of Non Agricultural Economic Activities - 1995

A. Introduction

Listing of Non Agricultural Economic Activities was conducted in stage is in Rural Sector covering all districts except the districts in Northern & Eastern Provinces. The main objective of this exercise was to identify the building material producing units and to compile the value of construction output of the housing sector as required by ICTAD. However, in order to make the exercise complete all non agricultural activities were enumerated.

A Grama Niladhari (GN) Division or a part of GN Division was considered as an enumeration area and enumerators were appointed by the Divisional Secretary of the area. The enumerator prepared a list of non agricultural economic activities by visiting each and every building in the enumeration area under the supervision of District Statistical Staff and the Head Office Staff.

B. Coverage

i. Economic Activities

The following Economic Activities were covered by the listing of non-agricultural economic activities.

1. Mining and Quarrying
2. Manufacturing
3. Electricity, Gas production & Water supply
4. Trade, Hotels and restaurants
5. Transport, Communication & Storage
6. Finance, Insurance, Real estate and business services
7. Public Administration, Education & Health activities
8. Community and Social Service & Private service activities
9. Construction

ii Area

This listing operation covered only the rural sector in Sri Lanka and did not cover:

1. Northern and Eastern Provinces
2. All Municipal Councils and Urban Councils
3. Areas covered by the Board of Investment

C. Listing Operation

The recruited enumerators were given a two days training by panel of trainers selected and trained for that purpose in advance. An enumerator is assigned to each enumeration area which is usually a GN Division. When the GN Division is spread over a larger area or has a large number of housing units / buildings, the GN Division is divided into two enumeration areas. The enumerators were asked to complete one line in the listing form (L) for each housing unit / building with the following information.

1. Name of the owner proprietor of the enterprise/chief occupant
2. Postal address
3. Nature of the unit
4. Type of Economic activity
5. Type of construction activity
6. Number of residents

If the housing unit/building was having the activities on

1. Mining and quarrying
2. Manufacturing
3. Electricity, Gas and Water

The following further information is inserted to the L1 form.

1. Economic Organization of the Establishment
2. Type of ownership of the establishment
3. Type of Industry
4. Major Products produced by the establishment
5. Persons engaged in the industry

Further if the housing units/building had done some construction activities during the reference period that too were included in an another form called L 3 with the following additional information.

1. Type of the Construction Activity done during the period from January to June in 1995
2. Expenditure/Estimated expenditure incurred during the period
3. Source of funds

D. Preparation of Tables

The information collected by the enumerators through L1 form was checked or completeness and data coded by the range Statistical Investigator under the supervision of the District Statistician/Statistical Officer. When two major products were given for an establishment, but products were coded using the information available in column 6 & 7. However the code for the 1st product is considered as the code relevant for the whole establishment in the tabulation procedure.

In most of the districts, data entry was done at the District Office itself using the personal computers available there. However L1 forms relevant to few districts were fed to the computer by the Data Processing Division of the Department.

The tabulation was done by the Industry and Construction Division using the SPSS PC+ package. The tables consist number of establishments and the persons engaged by Divisional Secretary Division and ISIC two digit level (Revision 3) in one set and ISIC 4 digit level (Revision 03) at district level in the other set. In cases when it is felt that the individual identification is disclosed, the information is either combined with another category or suppressed.

செய்து கொடுத்திருக்கிறார். அந்த நேரத்தில்
அவருக்குள் ஒரு வித உணர்வு பரவியது.
அந்த உணர்வு அவருக்குள் இருந்திருந்த
அந்த உணர்வு அவருக்குள் இருந்திருந்த
அந்த உணர்வு அவருக்குள் இருந்திருந்த

அந்த உணர்வு அவருக்குள் இருந்திருந்த
அந்த உணர்வு அவருக்குள் இருந்திருந்த
அந்த உணர்வு அவருக்குள் இருந்திருந்த
அந்த உணர்வு அவருக்குள் இருந்திருந்த

அந்த உணர்வு அவருக்குள் இருந்திருந்த
அந்த உணர்வு அவருக்குள் இருந்திருந்த
அந்த உணர்வு அவருக்குள் இருந்திருந்த
அந்த உணர்வு அவருக்குள் இருந்திருந்த

TABLE 1: NO. OF ESTABLISHMENT* & PERSONS ENGAGED BY DIVISIONAL SECRETARY DIVISION
GAMPANA DISTRICT - RURAL SECTOR - 1995

D.S. DIVISION	NO. OF ESTABLISHMENTS	PERSONS ENGAGED
ATTANAGALLA.....	1,305	6,536
BIYAGAMA.....	742	4,703
DIVULAPITIYA.....	3,575	17,170
GAMPANA.....	863	6,711
JA-BLA.....	464	16,575
KATANA.....	1,160	6,610
KELANIYA.....	114	2,113
MAHARA.....	967	5,070
NEBRIGAMA.....	3,247	0,241
MINUWANGODA.....	2,632	9,936
NEGOMBO.....	523	1,217
WATTALA.....	622	10,902
WKE-KIRINDIWELA.....	1,230	7,471
TOTAL.....	17,524	104,079

* - MINING & QUARRYING AND MANUFACTURING

TABLE 2: NO. OF ESTABLISHMENT* & PERSONS ENGAGED BY DIVISIONAL SECRETARY DIVISION & BY SECTOR
GAMPANA DISTRICT - RURAL SECTOR - 1995

D.S. DIVISION	TYPE OF SECTOR			
	PRIVATE **		OTHER	
	NO. OF ESTABLISHMENTS	PERSONS ENGAGED	NO. OF ESTABLISHMENTS	PERSONS ENGAGED
ATTANAGALLA.....	1,361	5,243	24	1,293
BIYAGAMA.....	687	4,367	55	336
DIVULAPITIYA.....	3,562	16,715	13	463
GAMPANA.....	840	5,444	23	1,267
JA-BLA.....	423	16,116	41	459
KATANA.....	1,158	6,610	2	8
KELANIYA.....	100	2,016	14	97
MAHARA.....	944	5,226	23	652
NEBRIGAMA.....	3,161	7,952	86	289
MINUWANGODA.....	2,621	8,844	11	1,092
NEGOMBO.....	522	1,215	1	2
WATTALA.....	564	9,112	58	1,790
WKE-KIRINDIWELA.....	1,198	4,541	32	2,930
TOTAL.....	17,141	93,401	383	10,678

* - MINING & QUARRYING AND MANUFACTURING

** - EXCLUDING B.O.I.

**TABLE 3: NO. OF ESTABLISHMENT* & PERSONS ENGAGED BY DIVISIONAL SECRETARY DIVISION & BY SIZE CLASS
GAMPAHA DISTRICT - RURAL SECTOR - 1995**

D.S. DIVISION	PERSONS ENGAGED SIZE CLASS					
	1 - 4		5 - 14		15 & ABOVE	
	NO. OF ESTABLISHMENTS	PERSONS ENGAGED	NO. OF ESTABLISHMENTS	PERSONS ENGAGED	NO. OF ESTABLISHMENTS	PERSONS ENGAGED
ATTANAGALLA.....	1,184	2,032	165	1,123	36	3,381
BIYAGAMA.....	504	1,156	198	1,407	40	2,140
DIVULAPITIYA.....	3,172	6,812	349	2,406	54	7,960
GAMPAHA.....	715	1,395	109	752	39	4,654
JA-ELA.....	361	625	98	698	65	15,252
KATANA.....	858	2,170	234	1,671	68	2,777
KELANIYA.....	80	187	23	180	11	1,746
MAHARA.....	822	1,579	113	743	32	3,556
MERRIGAMA.....	2,968	4,927	239	1,647	40	1,667
MINUWANGODA.....	2,348	4,639	235	1,498	49	3,799
NEGOMBO.....	499	638	17	103	7	476
WATTALA.....	415	850	132	967	75	9,085
WAKE-KIRINDIWELA.....	1,067	1,888	138	935	25	4,648
TOTAL.....	14,933	28,888	2,050	14,130	541	61,141

* - MINING & QUARRYING AND MANUFACTURING

TABLE 4: NO. OF ESTABLISHMENT* & PERSONS ENGAGED BY MAJOR INDUSTRY DIVISION (ISIC 1 DIGIT LEVEL)
GAMPAHA DISTRICT - RURAL SECTOR - 1995**

MAJOR INDUSTRY DIVISION	NO. OF ESTABLISHMENTS	PERSONS ENGAGED
C MINING & QUARRYING.....	659	3,507
D MANUFACTURING.....	16,865	180,572
TOTAL.....	17,524	184,079

* - MINING & QUARRYING AND MANUFACTURING

** - ISIC REVISION 03

TABLE 5: NO. OF ESTABLISHMENT* & PERSONS ENGAGED BY INDUSTRY DIVISION** (ISIC 2 DIGIT LEVEL)
GAHPANA DISTRICT - RURAL SECTOR - 1995

INDUSTRY DIVISION	NO. OF ESTABLISHMENTS	PERSONS ENGAGED
14 OTHER MINING & QUARRYING.....	659	3,507
15 FOOD PRODUCTS & BEVERAGES.....	3,552	16,643
16 TOBACCO PRODUCTS.....	2,104	3,810
17 TEXTILES.....	1,305	12,845
18 WEARING APPAREL DRESSING & SKINING OF FUR.....	1,353	19,620
19 TANNING & DRESSING OF LEATHER, LEATHER GOODS & FOOTWEAR,..	156	1,382
20 WOOD & WOOD PRODUCTS, EXCEPT FURNITURE.....	1,526	5,911
21 PAPER & PAPER PRODUCTS.....	255	2,215
22 PUBLISHING, PRINTING & REPRODUCTION OF RECORDED MEDIA.....	19	83
23 COKE, REFINED PETROLEUM PRODUCTIONS.....	7	18
24 CHEMICALS & CHEMICAL PRODUCTS.....	256	1,770
25 RUBBER & PLASTICS PRODUCTS.....	388	7,160
26 OTHER NON-METALLIC MINERAL PRODUCTS.....	3,788	15,863
27 BASIC METAL INDUSTRIES.....	80	1,082
28 FABRICATED METAL PRODUCTS, EXCEPT MACHINERY & EQUIPMENT.....	653	2,642
29 MACHINERY & EQUIPMENT N.E.C.....	99	431
31 ELECTRICAL MACHINERY & APPARATUS N.E.C.....	21	370
32 RADIO, TELEVISION & COMMUNICATION EQUIPMENT & APPARATUS.....	3	79
34 MOTOR VEHICLES, TRAILERS & SEMI-TRAILERS.....	24	1,016
35 OTHER TRANSPORT EQUIPMENT.....	8	21
36 MANUFACTURE OF FURNITURE, MANUFACTURING N.E.C.....	1,219	7,134
99 OTHER PRODUCTS.....	29	477
TOTAL.....	17,524	104,079

* - MINING & QUARRYING AND MANUFACTURING

** - ISIC REVISION 03

TABLE 6: NO. OF ESTABLISHMENTS* & PERSONS ENGAGED BY MAJOR INDUSTRY GROUP** (ISIC 3 DIGIT LEVEL)
GAMPANA DISTRICT - RURAL SECTOR - 1995

MAJOR INDUSTRY GROUP	NO. OF ESTABLISHMENTS	PERSONS ENGAGED
141 QUARRYING OF STONE, SAND & CLAY.....	647	3,445
142 MINING & QUARRYING N.E.C.....	12	62
151 MEAT, FISH, FRUIT, VEGETABLES, OILS & FATS PRODUCTS.....	467	4,400
152 MANU. OF DAIRY PRODUCTS.....	87	762
153 GRAIN MILL, STARCHES & STARCH PRODUCTS, ANIMAL FEEDS.....	941	5,119
154 OTHER FOOD PRODUCTS.....	2,035	6,023
155 BEVERAGES.....	22	339
160 TOBACCO PRODUCTS.....	2,184	3,810
171 SPINNING, WEAVING & FINISHING OF TEXTILES.....	417	7,954
172 OTHER TEXTILES.....	870	4,109
173 KNITTED & CROCHETED FABRICS & ARTICLES.....	18	782
181 WEARING APPAREL, EXCEPT FUR APPAREL.....	1,353	19,620
191 TANNING & LEATHER.....	53	858
192 MANU. OF FOOTWEAR.....	103	524
201 SAWMILLING & PLANING OF WOOD.....	395	2,445
202 MANU. OF PRODUCTS OF WOOD, CORK, STRAW & PLAITING MATERIALS..	1,131	3,466
210 PAPER & PAPER PRODUCTS.....	255	2,215
221 PUBLISHING.....	4	14
222 PRINTING & SERVICE ACTIVITIES RELATED TO PRINTING.....	15	69
231 COKE OVEN PRODUCTS.....	7	18
241 BASIC CHEMICALS.....	3	91
242 OTHER CHEMICALS PRODUCTS.....	253	1,679
251 RUBBER PRODUCTS.....	284	4,327
252 PLASTIC PRODUCTS.....	104	2,833
261 GLASS & GLASS PRODUCTS.....	17	146
269 NON-METALLIC MINERAL PRODUCTS N.E.C.....	3,771	15,717
271 BASIC IRON & STEEL.....	31	768
272 BASIC FERROUS & NON-FERROUS.....	15	80
273 CASTING OF METALS.....	34	234
281 STRUCTURAL METAL PRODUCTS.....	317	893
289 OTHER FABRICATED METAL PRODUCTS.....	336	1,749
291 GENERAL PURPOSE MACHINERY.....	21	147
292 SPECIAL PURPOSE MACHINERY.....	11	199
293 DOMESTIC APPLIANCES N.E.C.....	7	85
311 ELECTRIC MOTORS, GENERATORS & TRANSFORMERS.....	5	14
312 MANU. OF ELECTRICITY DISTRIBUTION & CONTROL APPARATUS.....	8	39
314 ACCUMULATORS, PRIMARY CELLS & PRIMARY BATTERIES.....	5	308
315 ELECTRIC CLAMPS & LIGHTING EQUIPMENT.....	3	9
321 ELECTRONIC VALVES & TUBES & OTHER ELECTRONIC COMPONENTS...	3	79
341 MOTOR VEHICLES.....	3	807
342 MANU. OF BODIES (COACHWORK) FOR MOTOR VEHICLES.....	12	162
343 PARTS & ACCESSORIES FOR MOTOR VEHICLES & ENGINES.....	9	47
359 MANU. OF TRANSPORT EQUIPMENT N.E.C.....	8	21
361 MANU. OF FURNITURE.....	403	1,321
369 MANUFACTURING N.E.C.....	816	5,813
999 OTHER PRODUCT.....	29	477
TOTAL.....	17,524	104,079

* - MINING & QUARRYING AND MANUFACTURING

** - ISIC REVISION 03

TABLE 7: NO. OF ESTABLISHMENT* & PERSONS ENGAGED BY INDUSTRY GROUP** (ISIC 4 DIGIT LEVEL)
GAMPAHA DISTRICT - RURAL SECTOR - 1995

INDUSTRY GROUP	NO. OF ESTABLISHMENTS	PERSONS ENGAGED
1410 QUARRYING OF STONE, SAND & CLAY.....	647	3,445
1429 OTHER MINING & QUARRYING N.E.C.....	12	62
1511 PRODU., PROCESSING & PRESERVING OF MEAT & MEAT PRODUCTS...	93	253
1512 PROCESSING & PRESERVING OF FISH & FISH PRODUCTS.....	70	919
1513 PROCESSING & PRESERVING OF FRUIT & VEGETABLES.....	240	2,386
1514 MANU. OF VEGETABLES & ANIMAL OILS & FATS.....	64	842
1520 DAIRY PRODUCTS.....	87	762
1531 GRAIN MILL PRODUCTS.....	941	5,119
1541 BAKERY PRODUCTS.....	565	2,013
1542 MANUFACTURE OF SUGER.....	36	82
1543 COCOA, CHOCOLATE & SUGER CONFECTIONERY.....	124	540
1544 MACARONI, NOODLES, COUSCOUS & SIMILAR PRODUCTS.....	46	205
1549 OTHER FOOD PRODUCTS N.E.C.....	1,264	3,183
1551 DISTILLING, RECTIFYING & BLENDING OF SPIRITS.....	6	297
1554 SOFT DRINKS & MINERAL WATERS.....	16	42
1600 TOBACCO PRODUCTS.....	2,184	3,810
1711 PREPARATION & SPINNING OF TEXTILE FIBRES.....	345	7,020
1712 FINISHING OF TEXTILES.....	72	934
1721 MADE-UP TEXTILE ARTICLES, EXCEPT APPAREL.....	292	1,641
1722 CARPETS & RUGS.....	157	459
1723 CORDAGE, ROPE, TWINE & NETTING.....	371	1,772
1729 OTHER TEXTILES N.E.C.....	50	237
1730 KNITTED & CROCHETED FABRICS & ARTICLES.....	18	782
1810 WEARING APPAREL, EXCEPT FUR APPAREL.....	1,353	19,620
1911 TANNING & DRESSING OF LEATHER.....	4	262
1912 MANU. OF LEATHER GOODS.....	49	596
1920 FOOTWEAR.....	103	524
2010 SAWMILLING & PLANING OF WOOD.....	395	2,445
2021 VENEER SHEETS, PLYWOOD, LAMINBOARD, PARTICLE BOARD.....	11	156
2022 BUILDERS CARPENTRY & JOINERY.....	505	1,308
2023 WOODEN CONTAINERS.....	148	268
2029 OTHER PRODUCTS OF WOOD.....	467	1,734
2101 PULP, PAPER & PAPERBOARD.....	16	848
2102 CORRUGATED PAPER & PAPERBOARD & CONTAINERS.....	58	866
2109 OTHER ARTICLES OF PAPER & PAPERBOARD.....	181	501
2219 OTHER PUBLISHING.....	4	14
2221 PRINTING.....	7	33
2222 SERVICE ACTIVITIES RELATED TO PRINTING.....	8	36
2310 COKE OVEN PRODUCTS.....	7	18
2412 FERTILIZERS & NITROGEN COMPOUNDS.....	3	91
2421 PESTICIDES & OTHER AGRO-CHEMICAL PRODUCTS.....	4	75
2422 PAINTS, VARNISHES & SIMILAR COATINGS, PRINTING INK.....	14	187
2423 PHARMACEUTICALS, MEDICINAL CHEMICALS & BOTANICAL.....	46	209

* - MINING & QUARRYING AND MANUFACTURING

** - ISIC REVISION 03

(continued)

TABLE 7: NO. OF ESTABLISHMENT* & PERSONS ENGAGED BY INDUSTRY GROUP** (ISIC 4 DIGIT LEVEL)
GAMPAHA DISTRICT - RURAL SECTOR - 1995

INDUSTRY GROUP	NO. OF ESTABLISHMENTS	PERSONS ENGAGED
2424 SOAP, CLEANING & POLISHING PREPARATIONS, PERFUMES.....	18	373
2429 OTHER CHEMICAL PRODUCTS N.E.C.....	171	835
2511 RUBBER TYRES & TUBES, REBUILDING OF RUBBER TYRES.....	13	2,745
2519 OTHER RUBBER PRODUCTS.....	271	1,582
2520 PLASTIC PRODUCTS.....	104	2,833
2610 GLASS & GLASS PRODUCTS.....	17	146
2691 NON-STRUCTURAL NON- REFRACTORY CERAMIC WARE.....	137	398
2692 REFRACTORY CERAMIC PRODUCTS.....	329	1,292
2693 STRUCTURAL NON-REFRACTORY CLAY & CERAMIC PRODUCTS.....	2,725	12,072
2694 CEMENT, LIME & PLASTER.....	97	457
2695 ARTICLES OF CONCRETE, CEMENT & PLASTER.....	447	1,379
2696 CUTTING, SHAPING & FINISHING OF STONE.....	24	98
2699 OTHER NON-METALIC MINERAL PRODUCTS N.E.C.....	12	30
2710 BASIC IRON & STEEL.....	31	768
2720 BASIC PRECIOUS & NON-FERROUS METAL.....	15	80
2731 CASTING OF IRON & STEEL.....	31	224
2732 CASTING OF NON-FERROUS METALS.....	3	10
2811 STRUCTURAL METAL PRODUCTS.....	308	859
2812 TANKS, RESERVOIRS & CONTAINERS OF METAL.....	9	34
2891 FORGING, PRESSING, STAMPING & ROLL-FORMING OF METAL.....	4	8
2893 CUTLERY, HAND TOOLS & GENERAL HARDWARE.....	170	761
2899 OTHER FABRICATED METAL PRODUCTS.....	162	980
2911 ENGINES & TURBINES, EXCEPT AIRCRAFT, VEHICLE ENGINE.....	5	11
2914 OVENS, FURNACES & FURNACE BURNERS.....	3	52
2919 OTHER GENERAL PURPOSE MACHINERY.....	13	84
2921 AGRICULTURAL & FORESTRY MACHINERY.....	8	40
2922 MACHINE-TOOLS.....	3	159
2930 DOMESTIC APPLIANCES N.E.C.....	7	85
3110 ELECTRIC MOTORS, GENERATORS & TRANSFORMERS.....	5	14
3120 MANU. OF ELECTRICITY DISTRIBUTION & CONTROL APPARATUS.....	8	39
3140 ACCUMULATORS, PRIMARY CELLS & PRIMARY BATTERIES.....	5	308
3150 ELECTRIC LAMPS & LIGHTING EQUIPMENTS.....	3	9
3210 ELECTRONIC VALVES & TUBES & OTHER ELECTRONIC COMPONENTS..	3	79
3410 MOTOR VEHICLES.....	3	807
3420 BODIES(COACHWORK) FOR MOTOR VEHICLES.....	12	162
3430 PARTS & ACCESSORIES FOR MOTOR VEHICLES & THEIR ENGINES...	9	47
3592 BICYCLES & INVALID CARRIAGES.....	4	13
3599 OTHER TRANSPORT EQUIPMENT N.E.C.....	4	8
3610 FURNITURE.....	403	1,321
3691 JEWELLERY & RELATED ARTICLES.....	450	1,126
3692 MUSICAL INSTRUMENTS.....	41	532
3693 SPORTS GOODS.....	10	51
3694 GAMES & TOYS.....	27	1,321
3699 OTHER MANUFACTURING N.E.C.....	288	2,783
9999 OTHER PRODUCT.....	29	477
TOTAL.....	17,524	104,079

* - MINING & QUARRYING AND MANUFACTURING

** - ISIC REVISION 03

TABLE 8: NO. OF ESTABLISHMENT* & PERSONS ENGAGED BY DIVISIONAL SECRETARY DIVISION & MAJOR INDUSTRY DIVISION** (ISIC 1 DIGIT LEVEL)
GAMPAHA DISTRICT - RURAL SECTOR - 1995

D.S. DIVISION & MAJOR INDUSTRY DIVISION	NO. OF ESTABLISHMENTS	PERSONS ENGAGED
ATTANAGALLA		
C MINING & QUARRYING.....	41	249
D MANUFACTURING.....	1,344	6,287
BIYAGAMA		
C MINING & QUARRYING.....	121	779
D MANUFACTURING.....	621	3,924
DIVULAPITIYA		
C MINING & QUARRYING.....	199	792
D MANUFACTURING.....	3,376	16,386
GAMPAHA		
C MINING & QUARRYING.....	12	91
D MANUFACTURING.....	851	6,620
JA-BLA		
D MANUFACTURING.....	464	16,575
KATANA		
C MINING & QUARRYING.....	2	3
D MANUFACTURING.....	1,158	6,615
KELANIYA		
D MANUFACTURING.....	114	2,113
MAHARA		
C MINING & QUARRYING.....	57	248
D MANUFACTURING.....	910	5,630
MEBRIGAMA		
C MINING & QUARRYING.....	78	362
D MANUFACTURING.....	3,169	7,879
MINUWANGODA		
C MINING & QUARRYING.....	16	80
D MANUFACTURING.....	2,616	9,856
NEGONBO		
D MANUFACTURING.....	523	1,217
WATTALA		
C MINING & QUARRYING.....	1	12
D MANUFACTURING.....	621	10,890
WKE-KIRINDIWELA		
C MINING & QUARRYING.....	132	891
D MANUFACTURING.....	1,098	6,580
TOTAL.....	17,524	104,079

* - MINING & QUARRYING AND MANUFACTURING

** - ISIC REVISION 03

TABLE 9:NO.OF ESTABLISHMENT* & PERSONS ENGAED BY DIVISIONAL SECRETARY DIVISION &
INDUSTRY DIVISION** (ISIC 2 DIGIT LEVEL)
GAMPANA DISTRICT - RURAL SECTOR - 1995

D.S.DIVISION & INDUSTRY DIVISION	NO.OF ESTABLISHMENTS	PERSONS ENGAGED
ATTANAGALLA		
14 OTHER MINING & QUARRYING.....	41	249
15 FOOD PRODUCTS & BEVERAGES.....	200	996
16 TOBACCO PRODUCTS.....	334	508
17 TEXTILES.....	74	355
18 WEARING APPEREL DRESSING & DYEING OF FUR.....	120	1,097
19 TRAINING & DRESSING OF LEATHER, LEATHER GOODS & FOOTWEAR.	12	41
20 WOOD & WOOD PRODUCTS, EXCEPT FURNITURE.....	147	357
21 PAPER & PAPER PRODUCTS.....	14	27
24 CHEMICALS & CHEMICAL PRODUCTS.....	11	127
25 RUBBER & PLASTICS PRODUCTS.....	25	353
26 OTHER NON-METALIC MINERAL PRODUCTS.....	192	641
28 FABRICATED METAL PRODUCTS, EXCEPT MACHINERY & EQUIPMENT...	55	115
31 ELECTRICAL MACHINERY & APPARATUS N.B.C.....	4	13
35 OTHER TRANSPORT EQUIPMENT.....	3	11
36 MANU.OF FURNITURE, MANUFACTURING N.B.C.....	150	1,631
99 OTHER PRODUCT.....	3	15
BIYAGAMA		
14 OTHER MINING & QUARRYING.....	121	779
15 FOOD PRODUCTS & BEVERAGES.....	84	1,009
17 TEXTILES.....	41	348
18 WEARING APPEREL DRESSING & DYEING OF FUR.....	58	412
19 TRAINING & DRESSING OF LEATHER, LEATHER GOODS & FOOTWEAR.	12	40
20 WOOD & WOOD PRODUCTS, EXCEPT FURNITURE.....	33	111
21 PAPER & PAPER PRODUCTS.....	14	57
22 PUBLISHING, PRINTING & REPRODUCTION OF RECORDED MEDIA.....	6	18
24 CHEMICALS & CHEMICAL PRODUCTS.....	6	46
25 RUBBER & PLASTICS PRODUCTS.....	16	312
26 OTHER NON-METALIC MINERAL PRODUCTS.....	137	660
27 BASIC METAL INDUSTRIES.....	8	46
28 FABRICATED METAL PRODUCTS, EXCEPT MACHINERY & EQUIPMENT...	63	282
29 MACHINERY & EQUIPMENT N.B.C.....	6	44
31 ELECTRICAL MACHINERY & APPARATUS N.B.C.....	3	13
34 MOTOR VEHICLES, TRAILERS & SEMI-TRAILERS.....	4	122
36 MANU.OF FURNITURE, MANUFACTURING N.B.C.....	125	395
99 OTHER PRODUCT.....	5	9
DIVULAPITIYA		
14 OTHER MINING & QUARRYING.....	199	792
15 FOOD PRODUCTS & BEVERAGES.....	585	4,560
16 TOBACCO PRODUCTS.....	122	155
17 TEXTILES.....	355	3,013
18 WEARING APPEREL DRESSING & DYEING OF FUR.....	150	743

(continued)

* - MINING & QUARRYING AND MANUFACTURING

** - ISIC REVISION 03

TABLE 9: NO. OF ESTABLISHMENT* & PERSONS ENGAGED BY DIVISIONAL SECRETARY DIVISION & INDUSTRY DIVISION** (ISIC 2 DIGIT LEVEL)
GANPAHA DISTRICT - RURAL SECTOR - 1995

D.S. DIVISION & INDUSTRY DIVISION	NO. OF ESTABLISHMENTS	PERSONS ENGAGED
19 TRAINING & DRESSING OF LEATHER, LEATHER GOODS & FOOTWEAR.	5	10
20 WOOD & WOOD PRODUCTS, EXCEPT FURNITURE.....	247	746
21 PAPER & PAPER PRODUCTS.....	3	15
23 COKE, REFINED PETROLEUM PRODUCT.....	5	15
24 CHEMICALS & CHEMICAL PRODUCTS.....	33	159
25 RUBBER & PLASTICS PRODUCTS.....	8	99
26 OTHER NON-METALIC MINERAL PRODUCTS.....	1,689	6,540
28 FABRICATED METAL PRODUCTS, EXCEPT MACHINERY & EQUIPMENT...	68	131
34 MOTOR VEHICLES, TRAILERS & SEMI-TRAILERS.....	4	17
36 MANU. OF FURNITURE, MANUFACTURING N.B.C.....	97	167
99 OTHER PRODUCT.....	5	16
GANPAHA		
14 OTHER MINING & QUARRYING.....	12	91
15 FOOD PRODUCTS & BEVERAGES.....	163	882
16 TOBACCO PRODUCTS.....	25	103
17 TEXTILES.....	26	47
18 WEARING APPERBL DRESSING & DYING OF FUR.....	121	741
19 TRAINING & DRESSING OF LEATHER, LEATHER GOODS & FOOTWEAR.	19	446
20 WOOD & WOOD PRODUCTS, EXCEPT FURNITURE.....	89	1,257
21 PAPER & PAPER PRODUCTS.....	25	212
24 CHEMICALS & CHEMICAL PRODUCTS.....	8	22
25 RUBBER & PLASTICS PRODUCTS.....	13	177
26 OTHER NON-METALIC MINERAL PRODUCTS.....	87	770
27 BASIC METAL INDUSTRIES.....	15	29
28 FABRICATED METAL PRODUCTS, EXCEPT MACHINERY & EQUIPMENT...	45	539
29 MACHINERY & EQUIPMENT N.B.C.....	5	13
31 ELECTRICAL MACHINERY & APPARATUS N.B.C.....	3	14
36 MANU. OF FURNITURE, MANUFACTURING N.B.C.....	206	1,367
99 OTHER PRODUCT.....	1	1
JA-EIA		
15 FOOD PRODUCTS & BEVERAGES.....	124	606
17 TEXTILES.....	25	1,291
18 WEARING APPERBL DRESSING & DYING OF FUR.....	109	8,493
19 TRAINING & DRESSING OF LEATHER, LEATHER GOODS & FOOTWEAR.	3	61
20 WOOD & WOOD PRODUCTS, EXCEPT FURNITURE.....	43	394
21 PAPER & PAPER PRODUCTS.....	4	809
24 CHEMICALS & CHEMICAL PRODUCTS.....	11	443
25 RUBBER & PLASTICS PRODUCTS.....	19	1,616
26 OTHER NON-METALIC MINERAL PRODUCTS.....	26	255
28 FABRICATED METAL PRODUCTS, EXCEPT MACHINERY & EQUIPMENT...	39	177
29 MACHINERY & EQUIPMENT N.B.C.....	6	195
34 MOTOR VEHICLES, TRAILERS & SEMI-TRAILERS.....	3	1,103
36 MANU. OF FURNITURE, MANUFACTURING N.B.C.....	52	1,132

(continued)

* - MINING & QUARRYING AND MANUFACTURING

** - ISIC REVISION 03

TABLE 9: NO. OF ESTABLISHMENT* & PERSONS ENGAGED BY DIVISIONAL SECRETARY DIVISION & INDUSTRY DIVISION** (ISIC 2 DIGIT LEVEL)
GAMPAHA DISTRICT - RURAL SECTOR - 1995

D.S.DIVISION & INDUSTRY DIVISION	NO. OF ESTABLISHMENTS	PERSONS ENGAGED
KATAMA		
14 OTHER MINING & QUARRYING.....	2	3
15 FOOD PRODUCTS & BEVERAGES.....	80	717
16 TOBACCO PRODUCTS.....	6	24
17 TEXTILES.....	246	1,729
18 WEARING APPEREL DRESSING & DYEING OF FUR.....	42	88
19 TRAINING & DRESSING OF LEATHER, LEATHER GOODS & FOOTWEAR.	3	7
20 WOOD & WOOD PRODUCTS, EXCEPT FURNITURE.....	52	340
21 PAPER & PAPER PRODUCTS.....	20	32
24 CHEMICALS & CHEMICAL PRODUCTS.....	67	243
25 RUBBER & PLASTICS PRODUCTS.....	3	7
26 OTHER NON-METALIC MINERAL PRODUCTS.....	579	3,002
27 BASIC METAL INDUSTRIES.....	22	199
28 FABRICATED METAL PRODUCTS, EXCEPT MACHINERY & EQUIPMENT...	21	74
36 MANU. OF FURNITURE, MANUFACTURING N.E.C.....	8	59
99 OTHER PRODUCT.....	9	94
KELANIYA		
15 FOOD PRODUCTS & BEVERAGES.....	13	99
17 TEXTILES.....	7	80
18 WEARING APPEREL DRESSING & DYEING OF FUR.....	16	199
19 TRAINING & DRESSING OF LEATHER, LEATHER GOODS & FOOTWEAR.	7	52
20 WOOD & WOOD PRODUCTS, EXCEPT FURNITURE.....	20	72
21 PAPER & PAPER PRODUCTS.....	13	41
24 CHEMICALS & CHEMICAL PRODUCTS.....	3	15
25 RUBBER & PLASTICS PRODUCTS.....	6	1,434
28 FABRICATED METAL PRODUCTS, EXCEPT MACHINERY & EQUIPMENT...	15	41
29 MACHINERY & EQUIPMENT N.E.C.....	3	24
34 MOTOR VEHICLES, TRAILERS & SEMI-TRAILERS.....	4	20
99 OTHER PRODUCT.....	7	36
MAHARA		
14 OTHER MINING & QUARRYING.....	57	248
15 FOOD PRODUCTS & BEVERAGES.....	153	1,168
16 TOBACCO PRODUCTS.....	45	45
17 TEXTILES.....	53	745
18 WEARING APPEREL DRESSING & DYEING OF FUR.....	102	668
19 TRAINING & DRESSING OF LEATHER, LEATHER GOODS & FOOTWEAR.	47	121
20 WOOD & WOOD PRODUCTS, EXCEPT FURNITURE.....	70	222

(continued)

* - MINING & QUARRYING AND MANUFACTURING

** - ISIC REVISION 03

TABLE 9: NO. OF ESTABLISHMENT* & PERSONS ENGAGED BY DIVISIONAL SECRETARY DIVISION & INDUSTRY DIVISION** (ISIC 2 DIGIT LEVEL)
GAMPARA DISTRICT - RURAL SECTOR - 1995

D.S.DIVISION & INDUSTRY DIVISION	NO. OF ESTABLISHMENTS	PERSONS ENGAGED
21 PAPER & PAPER PRODUCTS.....	47	532
24 CHEMICALS & CHEMICAL PRODUCTS.....	29	78
25 RUBBER & PLASTICS PRODUCTS.....	19	130
26 OTHER NON-METALIC MINERAL PRODUCTS.....	76	1,239
27 BASIC METAL INDUSTRIES.....	22	70
28 FABRICATED METAL PRODUCTS, EXCEPT MACHINERY & EQUIPMENT...	91	275
34 MOTOR VEHICLES, TRAILERS & SEMI-TRAILERS.....	4	25
36 MANU. OF FURNITURE, MANUFACTURING N.E.C.....	146	269
99 OTHER PRODUCT.....	6	43
KERRIGAMA		
14 OTHER MINING & QUARRYING.....	78	362
15 FOOD PRODUCTS & BEVERAGES.....	481	1,220
16 TOBACCO PRODUCTS.....	1,164	2,165
17 TEXTILES.....	195	509
18 WEARING APPEREL DRESSING & DYING OF FUR.....	188	501
19 TRAINING & DRESSING OF LEATHER, LEATHER GOODS & FOOTWEAR.	9	28
20 WOOD & WOOD PRODUCTS, EXCEPT FURNITURE.....	416	1,069
21 PAPER & PAPER PRODUCTS.....	25	64
22 PUBLISHING, PRINTING & REPRODUCTION OF RECORDED MEDIA.....	3	29
24 CHEMICALS & CHEMICAL PRODUCTS.....	17	100
25 RUBBER & PLASTICS PRODUCTS.....	58	382
26 OTHER NON-METALIC MINERAL PRODUCTS.....	349	1,066
28 FABRICATED METAL PRODUCTS, EXCEPT MACHINERY & EQUIPMENT...	60	113
29 MACHINERY & EQUIPMENT N.E.C.....	7	56
31 ELECTRICAL MACHINERY & APPARATUS N.E.C.....	3	4
34 MOTOR VEHICLES, TRAILERS & SEMI-TRAILERS.....	3	15
36 MANU. OF FURNITURE, MANUFACTURING N.E.C.....	188	553
99 OTHER PRODUCT.....	3	9
MINUWANGODA		
14 OTHER MINING & QUARRYING.....	16	80
15 FOOD PRODUCTS & BEVERAGES.....	1,218	3,282
16 TOBACCO PRODUCTS.....	130	212
17 TEXTILES.....	181	1,386
18 WEARING APPEREL DRESSING & DYING OF FUR.....	168	2,195
19 TRAINING & DRESSING OF LEATHER, LEATHER GOODS & FOOTWEAR.	8	227
20 WOOD & WOOD PRODUCTS, EXCEPT FURNITURE.....	147	395
21 PAPER & PAPER PRODUCTS.....	24	61
24 CHEMICALS & CHEMICAL PRODUCTS.....	45	206
25 RUBBER & PLASTICS PRODUCTS.....	43	136
26 OTHER NON-METALIC MINERAL PRODUCTS.....	442	1,085
28 FABRICATED METAL PRODUCTS, EXCEPT MACHINERY & EQUIPMENT...	58	289
36 MANU. OF FURNITURE, MANUFACTURING N.E.C.....	141	276
99 OTHER PRODUCT.....	11	106

(continued)

* - MINING & QUARRYING AND MANUFACTURING

** - ISIC REVISION 03

TABLE 9: NO. OF ESTABLISHMENT* & PERSONS ENGAGED BY DIVISIONAL SECRETARY DIVISION & INDUSTRY DIVISION** (ISIC 2 DIGIT LEVEL)
GAMPAHA DISTRICT - RURAL SECTOR - 1995

D.S. DIVISION & INDUSTRY DIVISION	NO. OF ESTABLISHMENTS	PERSONS ENGAGED
NEGOMBO		
15 FOOD PRODUCTS & BEVERAGES.....	90	447
16 TOBACCO PRODUCTS.....	313	524
17 TEXTILES.....	17	27
18 WEARING APPERBL DRESSING & DYING OF FUR.....	33	44
20 WOOD & WOOD PRODUCTS, EXCEPT FURNITURE.....	48	80
21 PAPER & PAPER PRODUCTS.....	10	13
26 OTHER NON-METALIC MINERAL PRODUCTS.....	4	67
28 FABRICATED METAL PRODUCTS, EXCEPT MACHINERY & EQUIPMENT...	4	7
36 MANU. OF FURNITURE, MANUFACTURING N.E.C.....	4	8
WATTALA		
14 OTHER MINING & QUARRYING.....	1	12
15 FOOD PRODUCTS & BEVERAGES.....	100	1,046
16 TOBACCO PRODUCTS.....	15	15
17 TEXTILES.....	32	422
18 WEARING APPERBL DRESSING & DYING OF FUR.....	107	3,764
19 TRAINING & DRESSING OF LEATHER, LEATHER GOODS & FOOTWEAR.	13	297
20 WOOD & WOOD PRODUCTS, EXCEPT FURNITURE.....	53	221
21 PAPER & PAPER PRODUCTS.....	47	284
24 CHEMICALS & CHEMICAL PRODUCTS.....	15	281
25 RUBBER & PLASTICS PRODUCTS.....	50	2,181
26 OTHER NON-METALIC MINERAL PRODUCTS.....	51	166
27 BASIC METAL INDUSTRIES.....	5	157
28 FABRICATED METAL PRODUCTS, EXCEPT MACHINERY & EQUIPMENT...	94	515
29 MACHINERY & EQUIPMENT N.E.C.....	7	80
36 MANU. OF FURNITURE, MANUFACTURING N.E.C.....	21	1,112
99 OTHER PRODUCT.....	11	349
WEKE-KIRINDIWELA		
14 OTHER MINING & QUARRYING.....	132	891
15 FOOD PRODUCTS & BEVERAGES.....	263	613
16 TOBACCO PRODUCTS.....	27	55
17 TEXTILES.....	53	2,893
18 WEARING APPERBL DRESSING & DYING OF FUR.....	139	675
19 TRAINING & DRESSING OF LEATHER, LEATHER GOODS & FOOTWEAR.	18	52
20 WOOD & WOOD PRODUCTS, EXCEPT FURNITURE.....	161	647
21 PAPER & PAPER PRODUCTS.....	10	69

(continued)

* - MINING & QUARRYING AND MANUFACTURING

** - ISIC REVISION 03

TABLE 9: NO. OF ESTABLISHMENT* & PERSONS ENGAGED BY DIVISIONAL SECRETARY DIVISION & INDUSTRY DIVISION (ISIC 2 DIGIT LEVEL)
GAMPAHA DISTRICT - RURAL SECTOR - 1995**

D.S.DIVISION & INDUSTRY DIVISION	NO.OF ESTABLISHMENTS	PERSONS ENGAGED
22 PUBLISHING, PRINTING & REPRODUCTION OF RECORDED MEDIA.....	5	5
24 CHEMICALS & CHEMICAL PRODUCTS.....	10	49
25 RUBBER & PLASTICS PRODUCTS.....	126	272
26 OTHER NON-METALIC MINERAL PRODUCTS.....	156	429
27 BASIC METAL INDUSTRIES.....	6	564
28 FABRICATED METAL PRODUCTS, EXCEPT MACHINERY & EQUIPMENT...	41	88
36 MANU. OF FURNITURE, MANUFACTURING N.B.C.....	79	156
99 OTHER PRODUCT.....	4	13
TOTAL.....	17,524	104,079

* - MINING & QUARRYING AND MANUFACTURING

** - ISIC REVISION 03

**TABLE 10: DISTRIBUTION OF ESTABLISHMENT* & PERSONS ENGAGED BY DIVISIONAL
SECRETARY DIVISION & PERSONS ENGAGED SIZE CLASS
GAMPAHA DISTRICT - RURAL SECTOR - 1995**

D.S.DIVISION & INDUSTRY DIVISION	NO. OF ESTABLISHMENTS
ATTANAGALLA	
14 OTHER MINING & QUARRYING	
1 - 4.....	18
5 - 14.....	21
15 & ABOVE.....	2
15 FOOD PRODUCTS & BEVERAGES	
1 - 4.....	171
5 - 14.....	22
15 & ABOVE.....	7
16 TOBACCO PRODUCTS	
1 - 4.....	314
5 - 14.....	18
15 & ABOVE.....	2
17 TEXTILES	
1 - 4.....	56
5 - 14.....	14
15 & ABOVE.....	4
18 WEARING APPEREL DRESSING & DYEING OF FUR	
1 - 4.....	107
5 - 14.....	6
15 & ABOVE.....	7
19 TRAINING & DRESSING OF LEATHER, LEATHER GOODS & FOOTWEAR	
1 - 4.....	9
5 - 14.....	3
20 WOOD & WOOD PRODUCTS, EXCEPT FURNITURE	
1 - 4.....	132
5 - 14.....	13
15 & ABOVE.....	2
21 PAPER & PAPER PRODUCTS	
1 - 4.....	12
5 - 14.....	2
24 CHEMICALS & CHEMICAL PRODUCTS	
1 - 4.....	6
5 - 14.....	3
15 & ABOVE.....	2
25 RUBBER & PLASTICS PRODUCTS	
1 - 4.....	23
5 - 14.....	1
15 & ABOVE.....	1
26 OTHER NON-METALIC MINERAL PRODUCTS	
1 - 4.....	157
5 - 14.....	32
15 & ABOVE.....	3
27 BASIC METAL INDUSTRIES	
5 - 14.....	1

(continued)

* - MINING & QUARRYING AND MANUFACTURING

**TABLE 10: DISTRIBUTION OF ESTABLISHMENT* & PERSONS ENGAGED BY DIVISIONAL
SECRETARY DIVISION & PERSONS ENGAGED SIZE CLASS
GANPAHA DISTRICT - RURAL SECTOR - 1995**

D.S. DIVISION & INDUSTRY DIVISION	NO. OF ESTABLISHMENTS
28 FABRICATED METAL PRODUCTS, EXCEPT MACHINERY & EQUIPMENT	
1 - 4.....	51
5 - 14.....	4
31 ELECTRICAL MACHINERY & APPARATUS N.E.C.	
1 - 4.....	3
5 - 14.....	1
35 OTHER TRANSPORT EQUIPMENT	
1 - 4.....	2
5 - 14.....	1
36 MANU. OF FURNITURE, MANUFACTURING N.E.C.	
1 - 4.....	121
5 - 14.....	23
15 & ABOVE.....	6
99 OTHER PRODUCT	
1 - 4.....	2
BIYAGAMA	
14 OTHER MINING & QUARRYING	
1 - 4.....	38
5 - 14.....	79
15 & ABOVE.....	4
15 FOOD PRODUCTS & BEVERAGES	
1 - 4.....	61
5 - 14.....	19
15 & ABOVE.....	4
16 TOBACCO PRODUCTS	
1 - 4.....	1
17 TEXTILES	
1 - 4.....	27
5 - 14.....	12
15 & ABOVE.....	2
18 WEARING APPEREL DRESSING & DYING OF FUR	
1 - 4.....	39
5 - 14.....	11
15 & ABOVE.....	8
19 TRAINING & DRESSING OF LEATHER, LEATHER GOODS & FOOTWEAR	
1 - 4.....	10
5 - 14.....	2
20 WOOD & WOOD PRODUCTS, EXCEPT FURNITURE	
1 - 4.....	26
5 - 14.....	6
15 & ABOVE.....	1
21 PAPER & PAPER PRODUCTS	
1 - 4.....	11
5 - 14.....	3
22 PUBLISHING, PRINTING & REPRODUCTION OF RECORDED MEDIA	
1 - 4.....	6

(continued)

* - MINING & QUARRYING AND MANUFACTURING

**TABLE 10: DISTRIBUTION OF ESTABLISHMENT* & PERSONS ENGAGED BY DIVISIONAL SECRETARY DIVISION & PERSONS ENGAGED SIZE CLASS
GAMPAHA DISTRICT - RURAL SECTOR - 1995**

D.S.DIVISION & INDUSTRY DIVISION	NO.OF ESTABLISHMENTS
24 CHEMICALS & CHEMICAL PRODUCTS	
1 - 4.....	4
5 - 14.....	1
15 & ABOVE.....	1
25 RUBBER & PLASTICS PRODUCTS	
1 - 4.....	9
5 - 14.....	3
15 & ABOVE.....	4
26 OTHER NON-METALIC MINERAL PRODUCTS	
1 - 4.....	111
5 - 14.....	16
15 & ABOVE.....	10
27 BASIC METAL INDUSTRIES	
1 - 4.....	6
5 - 14.....	1
15 & ABOVE.....	1
28 FABRICATED METAL PRODUCTS, EXCEPT MACHINERY & EQUIPMENT	
1 - 4.....	41
5 - 14.....	21
15 & ABOVE.....	1
29 MACHINERY & EQUIPMENT N.E.C.	
1 - 4.....	3
5 - 14.....	2
15 & ABOVE.....	1
31 ELECTRICAL MACHINERY & APPARATUS N.E.C.	
1 - 4.....	2
5 - 14.....	1
32 RADIO, TELEVISION & COMMUNICATION EQUIPMENT & APPARATUS	
1 - 4.....	1
34 MOTOR VEHICLES, TRAILERS & SEMI-TRAILERS	
1 - 4.....	2
15 & ABOVE.....	2
35 OTHER TRANSPORT EQUIPMENT	
1 - 4.....	1
36 MANU.OF FURNITURE, MANUFACTURING N.E.C.	
1 - 4.....	103
5 - 14.....	21
15 & ABOVE.....	1
99 OTHER PRODUCT	
1 - 4.....	2
DIVULAPITIYA	
14 OTHER MINING & QUARRYING	
1 - 4.....	146
5 - 14.....	50
15 & ABOVE.....	3
15 FOOD PRODUCTS & BEVERAGES	
1 - 4.....	538
5 - 14.....	43
15 & ABOVE.....	4

* - MINING & QUARRYING AND MANUFACTURING

(continued)

**TABLE 10: DISTRIBUTION OF ESTABLISHMENT* & PERSONS ENGAGED BY DIVISIONAL
SECRETARY DIVISION & PERSONS ENGAGED SIZE CLASS
GANPAHA DISTRICT - RURAL SECTOR - 1995**

D.S. DIVISION & INDUSTRY DIVISION	NO. OF ESTABLISHMENTS
16 TOBACCO PRODUCTS	
1 - 4.....	121
5 - 14.....	1
17 TEXTILES	
1 - 4.....	233
5 - 14.....	94
15 & ABOVE.....	28
18 WEARING APPEREL DRESSING & DYEING OF FUR	
1 - 4.....	144
5 - 14.....	3
15 & ABOVE.....	3
19 TRAINING & DRESSING OF LEATHER, LEATHER GOODS & FOOTWEAR	
1 - 4.....	5
20 WOOD & WOOD PRODUCTS, EXCEPT FURNITURE	
1 - 4.....	217
5 - 14.....	28
15 & ABOVE.....	2
21 PAPER & PAPER PRODUCTS	
1 - 4.....	1
5 - 14.....	2
23 COKE, REFINED PETROLEUM PRODU. C.	
1 - 4.....	4
5 - 14.....	1
24 CHEMICALS & CHEMICAL PRODUCTS	
1 - 4.....	25
5 - 14.....	5
15 & ABOVE.....	3
25 RUBBER & PLASTICS PRODUCTS	
1 - 4.....	3
5 - 14.....	4
15 & ABOVE.....	1
26 OTHER NON-METALIC MINERAL PRODUCTS	
1 - 4.....	1,570
5 - 14.....	109
15 & ABOVE.....	10
28 FABRICATED METAL PRODUCTS, EXCEPT MACHINERY & EQUIPMENT	
1 - 4.....	66
5 - 14.....	2
31 ELECTRICAL MACHINERY & APPARATUS N.E.C.	
1 - 4.....	1
5 - 14.....	1
34 MOTOR VEHICLES, TRAILERS & SEMI-TRAILERS	
1 - 4.....	2
5 - 14.....	2
35 OTHER TRANSPORT EQUIPMENT	
1 - 4.....	1

* - MINING & QUARRYING AND MANUFACTURING

(continued)

TABLE 10: DISTRIBUTION OF ESTABLISHMENT* & PERSONS ENGAGED BY DIVISIONAL
SECRETARY DIVISION & PERSONS ENGAGED SIZE CLASS
GANPAHA DISTRICT - RURAL SECTOR - 1995

D.S.DIVISION & INDUSTRY DIVISION	NO.OF ESTABLISHMENTS
36 MANU.OF FURNITURE, MANUFACTURING N.B.C.	
1 - 4.....	93
5 - 14.....	4
99 OTHER PRODUCT	
1 - 4.....	2
GANPAHA	
14 OTHER MINING & QUARRYING	
1 - 4.....	2
5 - 14.....	9
15 & ABOVE.....	1
15 FOOD PRODUCTS & BEVERAGES	
1 - 4.....	143
5 - 14.....	13
15 & ABOVE.....	7
16 TOBACCO PRODUCTS	
1 - 4.....	23
5 - 14.....	1
15 & ABOVE.....	1
17 TEXTILES	
1 - 4.....	24
5 - 14.....	2
18 WEARING APPEREL DRESSING & DYEING OF FUR	
1 - 4.....	106
5 - 14.....	11
15 & ABOVE.....	4
19 TRAINING & DRESSING OF LEATHER, LEATHER GOODS & FOOTWEAR	
1 - 4.....	13
5 - 14.....	2
15 & ABOVE.....	4
20 WOOD & WOOD PRODUCTS, EXCEPT FURNITURE	
1 - 4.....	78
5 - 14.....	8
15 & ABOVE.....	3
21 PAPER & PAPER PRODUCTS	
1 - 4.....	24
15 & ABOVE.....	1
24 CHEMICALS & CHEMICAL PRODUCTS	
1 - 4.....	6
5 - 14.....	2
25 RUBBER & PLASTICS PRODUCTS	
1 - 4.....	10
5 - 14.....	1
15 & ABOVE.....	2
26 OTHER NON-METALIC MINERAL PRODUCTS	
1 - 4.....	71
5 - 14.....	14
15 & ABOVE.....	2

* - MINING & QUARRYING AND MANUFACTURING

(continued)

TABLE 10: DISTRIBUTION OF ESTABLISHMENT* & PERSONS ENGAGED BY DIVISIONAL
SECRETARY DIVISION & PERSONS ENGAGED SIZE CLASS
GAMPALA DISTRICT - RURAL SECTOR - 1995

D.S. DIVISION & INDUSTRY DIVISION	NO. OF ESTABLISHMENTS
27 BASIC METAL INDUSTRIES	
1 - 4.....	14
5 - 14.....	1
28 FABRICATED METAL PRODUCTS, EXCEPT MACHINERY & EQUIPMENT	
1 - 4.....	39
5 - 14.....	5
15 & ABOVE.....	1
29 MACHINERY & EQUIPMENT N.E.C.	
1 - 4.....	4
5 - 14.....	1
31 ELECTRICAL MACHINERY & APPARATUS N.E.C.	
1 - 4.....	2
5 - 14.....	1
36 MANU. OF FURNITURE, MANUFACTURING N.E.C.	
1 - 4.....	155
5 - 14.....	38
15 & ABOVE.....	13
99 OTHER PRODUCT	
1 - 4.....	1
JA-BLA	
15 FOOD PRODUCTS & BEVERAGES	
1 - 4.....	77
5 - 14.....	42
15 & ABOVE.....	3
16 TOBACCO PRODUCTS	
1 - 4.....	2
17 TEXTILES	
1 - 4.....	9
5 - 14.....	7
15 & ABOVE.....	9
18 WEARING APPREL DRESSING & DYING OF FUR	
1 - 4.....	75
5 - 14.....	15
15 & ABOVE.....	19
19 TRAINING & DRESSING OF LEATHER, LEATHER GOODS & FOOTWEAR	
1 - 4.....	2
15 & ABOVE.....	1
20 WOOD & WOOD PRODUCTS, EXCEPT FURNITURE	
1 - 4.....	34
5 - 14.....	7
15 & ABOVE.....	2
21 PAPER & PAPER PRODUCTS	
1 - 4.....	2
5 - 14.....	1
15 & ABOVE.....	1

* - MINING & QUARRYING AND MANUFACTURING

(continued)

TABLE 10: DISTRIBUTION OF ESTABLISHMENT* & PERSONS ENGAGED BY DIVISIONAL
SECRETARY DIVISION & PERSONS ENGAGED SIZE CLASS
GANPAHA DISTRICT - RURAL SECTOR - 1995

D.S.DIVISION & INDUSTRY DIVISION	NO. OF ESTABLISHMENTS
24 CHEMICALS & CHEMICAL PRODUCTS	
1 - 4.....	3
5 - 14.....	1
15 & ABOVE.....	7
25 RUBBER & PLASTICS PRODUCTS	
1 - 4.....	8
5 - 14.....	3
15 & ABOVE.....	8
26 OTHER NON-METALIC MINERAL PRODUCTS	
1 - 4.....	21
5 - 14.....	4
15 & ABOVE.....	1
27 BASIC METAL INDUSTRIES	
1 - 4.....	1
28 FABRICATED METAL PRODUCTS, EXCEPT MACHINERY & EQUIPMENT	
1 - 4.....	30
5 - 14.....	6
15 & ABOVE.....	2
29 MACHINERY & EQUIPMENT N.B.C.	
1 - 4.....	2
5 - 14.....	1
15 & ABOVE.....	3
31 ELECTRICAL MACHINERY & APPARATUS N.B.C.	
15 & ABOVE.....	1
34 MOTOR VEHICLES, TRAILERS & SEMI-TRAILERS	
1 - 4.....	1
15 & ABOVE.....	1
36 MANU. OF FURNITURE, MANUFACTURING N.B.C.	
1 - 4.....	34
5 - 14.....	11
15 & ABOVE.....	7
KATANA	
14 OTHER MINING & QUARRYING	
1 - 4.....	2
15 FOOD PRODUCTS & BEVERAGES	
1 - 4.....	56
5 - 14.....	17
15 & ABOVE.....	7
16 TOBACCO PRODUCTS	
1 - 4.....	5
15 & ABOVE.....	1
17 TEXTILES	
1 - 4.....	208
5 - 14.....	24
15 & ABOVE.....	14

* - MINING & QUARRYING AND MANUFACTURING

(continued)

TABLE 10: DISTRIBUTION OF ESTABLISHMENT* & PERSONS ENGAGED BY DIVISIONAL
SECRETARY DIVISION & PERSONS ENGAGED SIZE CLASS
GAMPAHA DISTRICT - RURAL SECTOR - 1995

D.S.DIVISION & INDUSTRY DIVISION	NO.OF ESTABLISHMENTS
18 WEARING APPEREL DRESSING & DYEING OF FUR	
1 - 4.....	40
5 - 14.....	2
19 TRAINING & DRESSING OF LEATHER, LEATHER GOODS & FOOTWEAR	
1 - 4.....	2
5 - 14.....	1
20 WOOD & WOOD PRODUCTS, EXCEPT FURNITURE	
1 - 4.....	41
5 - 14.....	8
15 & ABOVE.....	3
21 PAPER & PAPER PRODUCTS	
1 - 4.....	19
5 - 14.....	1
23 COKE, REFINED PETROLEUM PRODUC.	
1 - 4.....	1
24 CHEMICALS & CHEMICAL PRODUCTS	
1 - 4.....	51
5 - 14.....	15
15 & ABOVE.....	1
25 RUBBER & PLASTICS PRODUCTS	
1 - 4.....	2
5 - 14.....	1
26 OTHER NON-METALIC MINERAL PRODUCTS	
1 - 4.....	385
5 - 14.....	156
15 & ABOVE.....	38
27 BASIC METAL INDUSTRIES	
1 - 4.....	19
5 - 14.....	1
15 & ABOVE.....	2
28 FABRICATED METAL PRODUCTS, EXCEPT MACHINERY & EQUIPMENT	
1 - 4.....	18
5 - 14.....	3
31 ELECTRICAL MACHINERY & APPARATUS N.B.C.	
1 - 4.....	2
32 RADIO, TELEVISION & COMMUNICATION EQUIPMENT & APPARATUS	
5 - 14.....	1
15 & ABOVE.....	1
35 OTHER TRANSPORT EQUIPMENT	
1 - 4.....	1
36 MANU.OF FURNITURE, MANUFACTURING N.B.C.	
1 - 4.....	4
5 - 14.....	3
15 & ABOVE.....	1
99 OTHER PRODUCT	
1 - 4.....	2
5 - 14.....	1

* - MINING & QUARRYING AND MANUFACTURING

(continued)

**TABLE 10: DISTRIBUTION OF ESTABLISHMENT* & PERSONS ENGAGED BY DIVISIONAL
SECRETARY DIVISION & PERSONS ENGAGED SIZE CLASS
GAMPALA DISTRICT - RURAL SECTOR - 1995**

D.S.DIVISION & INDUSTRY DIVISION	NO.OF ESTABLISHMENTS
KELANIYA	
15 FOOD PRODUCTS & BEVERAGES	
1 - 4.....	8
5 - 14.....	4
15 & ABOVE.....	1
17 TEXTILES	
1 - 4.....	2
5 - 14.....	3
15 & ABOVE.....	2
18 WEARING APPEREL DRESSING & DYEING OF FUR	
1 - 4.....	12
5 - 14.....	2
15 & ABOVE.....	2
19 TRAINING & DRESSING OF LEATHER, LEATHER GOODS & FOOTWEAR	
1 - 4.....	2
5 - 14.....	5
20 WOOD & WOOD PRODUCTS, EXCEPT FURNITURE	
1 - 4.....	16
5 - 14.....	3
15 & ABOVE.....	1
21 PAPER & PAPER PRODUCTS	
1 - 4.....	11
5 - 14.....	1
15 & ABOVE.....	1
22 PUBLISHING, PRINTING & REPRODUCTION OF RECORDED MEDIA	
1 - 4.....	1
24 CHEMICALS & CHEMICAL PRODUCTS	
1 - 4.....	2
5 - 14.....	1
25 RUBBER & PLASTICS PRODUCTS	
1 - 4.....	3
5 - 14.....	1
15 & ABOVE.....	2
26 OTHER NON-METALIC MINERAL PRODUCTS	
1 - 4.....	2
28 FABRICATED METAL PRODUCTS, EXCEPT MACHINERY & EQUIPMENT	
1 - 4.....	15
29 MACHINERY & EQUIPMENT N.E.C.	
1 - 4.....	2
15 & ABOVE.....	1
34 MOTOR VEHICLES, TRAILERS & SEMI-TRAILERS	
1 - 4.....	2
5 - 14.....	2
36 MANU.OF FURNITURE, MANUFACTURING N.E.C.	
1 - 4.....	1
5 - 14.....	1
99 OTHER PRODUCT	
1 - 4.....	1
15 & ABOVE.....	1

* - MINING & QUARRTING AND MANUFACTURING

(continued)

**TABLE 10: DISTRIBUTION OF ESTABLISHMENT* & PERSONS ENGAGED BY DIVISIONAL
SECRETARY DIVISION & PERSONS ENGAGED SIZE CLASS
GAMPANA DISTRICT - RURAL SECTOR - 1995**

D.S. DIVISION & INDUSTRY DIVISION	NO. OF ESTABLISHMENTS
MAHARA	
14 OTHER MINING & QUARRYING	
1 - 4.....	38
5 - 14.....	16
15 & ABOVE.....	3
15 FOOD PRODUCTS & BEVERAGES	
1 - 4.....	128
5 - 14.....	19
15 & ABOVE.....	6
16 TOBACCO PRODUCTS	
1 - 4.....	45
17 TEXTILES	
1 - 4.....	37
5 - 14.....	11
15 & ABOVE.....	5
18 WEAVING APPAREL DRESSING & DYEING OF FUR	
1 - 4.....	88
5 - 14.....	10
15 & ABOVE.....	4
19 TRAINING & DRESSING OF LEATHER, LEATHER GOODS & FOOTWEAR	
1 - 4.....	41
5 - 14.....	5
15 & ABOVE.....	1
20 WOOD & WOOD PRODUCTS, EXCEPT FURNITURE	
1 - 4.....	60
5 - 14.....	7
15 & ABOVE.....	3
21 PAPER & PAPER PRODUCTS	
1 - 4.....	42
5 - 14.....	3
15 & ABOVE.....	2
22 PUBLISHING, PRINTING & REPRODUCTION OF RECORDED MEDIA	
1 - 4.....	1
15 & ABOVE.....	1
24 CHEMICALS & CHEMICAL PRODUCTS	
1 - 4.....	25
5 - 14.....	4
25 RUBBER & PLASTICS PRODUCTS	
1 - 4.....	13
5 - 14.....	4
15 & ABOVE.....	2
26 OTHER NON-METALIC MINERAL PRODUCTS	
1 - 4.....	67
5 - 14.....	7
15 & ABOVE.....	2

* - MINING & QUARRYING AND MANUFACTURING

(continued)

**TABLE 10: DISTRIBUTION OF ESTABLISHMENT* & PERSONS ENGAGED BY DIVISIONAL
SECRETARY DIVISION & PERSONS ENGAGED SIZE CLASS
GAMPAHA DISTRICT - RURAL SECTOR - 1995**

D.S. DIVISION & INDUSTRY DIVISION	NO. OF ESTABLISHMENTS
27 BASIC METAL INDUSTRIES	
1 - 4.....	17
5 - 14.....	5
28 FABRICATED METAL PRODUCTS, EXCEPT MACHINERY & EQUIPMENT	
1 - 4.....	77
5 - 14.....	12
15 & ABOVE.....	2
29 MACHINERY & EQUIPMENT N.B.C.	
1 - 4.....	1
5 - 14.....	1
31 ELECTRICAL MACHINERY & APPARATUS N.B.C.	
1 - 4.....	1
34 MOTOR VEHICLES, TRAILERS & SEMI-TRAILERS	
1 - 4.....	2
5 - 14.....	1
15 & ABOVE.....	1
36 MANU. OF FURNITURE, MANUFACTURING N.B.C.	
1 - 4.....	139
5 - 14.....	7
99 OTHER PRODUCT	
5 - 14.....	1
HNBIRIGAMA	
14 OTHER MINING & QUARRYING	
1 - 4.....	48
5 - 14.....	28
15 & ABOVE.....	2
15 FOOD PRODUCTS & BEVERAGES	
1 - 4.....	451
5 - 14.....	26
15 & ABOVE.....	4
16 TOBACCO PRODUCTS	
1 - 4.....	1,119
5 - 14.....	31
15 & ABOVE.....	14
17 TEXTILES	
1 - 4.....	168
5 - 14.....	24
15 & ABOVE.....	3
18 WEARING APPAREL DRESSING & DYEING OF FUR	
1 - 4.....	181
5 - 14.....	6
15 & ABOVE.....	1
19 TANNING & DRESSING OF LEATHER, LEATHER GOODS & FOOTWEAR	
1 - 4.....	7
5 - 14.....	2

* - MINING & QUARRYING AND MANUFACTURING

(continued)

TABLE 10: DISTRIBUTION OF ESTABLISHMENT* & PERSONS ENGAGED BY DIVISIONAL
SECRETARY DIVISION & PERSONS ENGAGED SIZE CLASS
GAMPAAH DISTRICT - RURAL SECTOR - 1995

D.S.DIVISION & INDUSTRY DIVISION	NO.OF ESTABLISHMENTS
20 WOOD & WOOD PRODUCTS, EXCEPT FURNITURE	
1 - 4.....	379
5 - 14.....	33
15 & ABOVE.....	4
21 PAPER & PAPER PRODUCTS	
1 - 4.....	21
5 - 14.....	4
22 PUBLISHING, PRINTING & REPRODUCTION OF RECORDED MEDIA	
1 - 4.....	1
5 - 14.....	1
15 & ABOVE.....	1
24 CHEMICALS & CHEMICAL PRODUCTS	
1 - 4.....	13
5 - 14.....	2
15 & ABOVE.....	2
25 RUBBER & PLASTICS PRODUCTS	
1 - 4.....	53
5 - 14.....	2
15 & ABOVE.....	3
26 OTHER NON-METALIC MINERAL PRODUCTS	
1 - 4.....	302
5 - 14.....	44
15 & ABOVE.....	3
28 FABRICATED METAL PRODUCTS, EXCEPT MACHINERY & EQUIPMENT	
1 - 4.....	57
5 - 14.....	3
29 MACHINERY & EQUIPMENT N.B.C.	
1 - 4.....	5
15 & ABOVE.....	2
31 ELECTRICAL MACHINERY & APPARATUS N.B.C.	
1 - 4.....	3
34 MOTOR VEHICLES, TRAILERS & SEMI-TRAILERS	
1 - 4.....	1
5 - 14.....	2
36 MANU. OF FURNITURE, MANUFACTURING N.B.C.	
1 - 4.....	156
5 - 14.....	31
15 & ABOVE.....	1
99 OTHER PRODUCT	
1 - 4.....	3
MINUWANGODA	
14 OTHER MINING & QUARRYING	
1 - 4.....	7
5 - 14.....	9
15 FOOD PRODUCTS & BEVERAGES	
1 - 4.....	1,083
5 - 14.....	128
15 & ABOVE.....	7

* - MINING & QUARRYING AND MANUFACTURING

(continued)

**TABLE 10: DISTRIBUTION OF ESTABLISHMENT* & PERSONS ENGAGED BY DIVISIONAL
SECRETARY DIVISION & PERSONS ENGAGED SIZE CLASS
GAMPANA DISTRICT - RURAL SECTOR - 1995**

D.S.DIVISION & INDUSTRY DIVISION	NO.OF ESTABLISHMENTS
16 TOBACCO PRODUCTS	
1 - 4.....	125
5 - 14.....	3
15 & ABOVE.....	2
17 TEXTILES	
1 - 4.....	133
5 - 14.....	30
15 & ABOVE.....	18
18 WEARING APPEREL DRESSING & DYEING OF FUR	
1 - 4.....	151
5 - 14.....	7
15 & ABOVE.....	10
19 TRAINING & DRESSING OF LEATHER, LEATHER GOODS & FOOTWEAR	
1 - 4.....	5
5 - 14.....	2
15 & ABOVE.....	1
20 WOOD & WOOD PRODUCTS, EXCEPT FURNITURE	
1 - 4.....	130
5 - 14.....	15
15 & ABOVE.....	2
21 PAPER & PAPER PRODUCTS	
1 - 4.....	21
5 - 14.....	2
15 & ABOVE.....	1
22 PUBLISHING, PRINTING & REPRODUCTION OF RECORDED MEDIA	
1 - 4.....	2
23 COKE, REFINED PETROLEUM PRODUC.	
1 - 4.....	1
24 CHEMICALS & CHEMICAL PRODUCTS	
1 - 4.....	33
5 - 14.....	10
15 & ABOVE.....	2
25 RUBBER & PLASTICS PRODUCTS	
1 - 4.....	37
5 - 14.....	3
15 & ABOVE.....	3
26 OTHER NON-METALIC MINERAL PRODUCTS	
1 - 4.....	424
5 - 14.....	17
15 & ABOVE.....	1
28 FABRICATED METAL PRODUCTS, EXCEPT MACHINERY & EQUIPMENT	
1 - 4.....	55
5 - 14.....	2
15 & ABOVE.....	1

* - MINING & QUARRYING AND MANUFACTURING

(continued)

**TABLE 10: DISTRIBUTION OF ESTABLISHMENT* & PERSONS ENGAGED BY DIVISIONAL
SECRETARY DIVISION & PERSONS ENGAGED SIZE CLASS
GAMPAHA DISTRICT - RURAL SECTOR - 1995**

D.S.DIVISION & INDUSTRY DIVISION	NO.OF ESTABLISHMENTS
29 MACHINERY & EQUIPMENT N.B.C.	
1 - 4.....	1
31 ELECTRICAL MACHINERY & APPARATUS N.B.C.	
1 - 4.....	1
34 MOTOR VEHICLES, TRAILERS & SEMI-TRAILERS	
1 - 4.....	2
35 OTHER TRANSPORT EQUIPMENT	
1 - 4.....	1
36 MANU.OF FURNITURE, MANUFACTURING N.B.C.	
1 - 4.....	134
5 - 14.....	7
99 OTHER PRODUCT	
1 - 4.....	2
15 & ABOVE.....	1
NEGOMBO	
15 FOOD PRODUCTS & BEVERAGES	
1 - 4.....	72
5 - 14.....	13
15 & ABOVE.....	5
16 TOBACCO PRODUCTS	
1 - 4.....	312
15 & ABOVE.....	1
17 TEXTILES	
1 - 4.....	16
5 - 14.....	1
18 WEARING APPAREL DRESSING & DYEING OF FUR	
1 - 4.....	32
5 - 14.....	1
20 WOOD & WOOD PRODUCTS, EXCEPT FURNITURE	
1 - 4.....	47
5 - 14.....	1
21 PAPER & PAPER PRODUCTS	
1 - 4.....	9
24 CHEMICALS & CHEMICAL PRODUCTS	
1 - 4.....	1
25 RUBBER & PLASTICS PRODUCTS	
5 - 14.....	1
15 & ABOVE.....	1
26 OTHER NON-METALIC MINERAL PRODUCTS	
1 - 4.....	2
28 FABRICATED METAL PRODUCTS, EXCEPT MACHINERY & EQUIPMENT	
1 - 4.....	4
36 MANU.OF FURNITURE, MANUFACTURING N.B.C.	
1 - 4.....	4

* - MINING & QUARRYING AND MANUFACTURING

(continued)

**TABLE 10: DISTRIBUTION OF ESTABLISHMENT* & PERSONS ENGAGED BY DIVISIONAL
SECRETARY DIVISION & PERSONS ENGAGED SIZE CLASS
GAMPALA DISTRICT - RURAL SECTOR - 1995**

D.S.DIVISION & INDUSTRY DIVISION	NO. OF ESTABLISHMENTS
WATTALA	
14 OTHER MINING & QUARRYING	
5 - 14.....	1
15 FOOD PRODUCTS & BEVERAGES	
1 - 4.....	59
5 - 14.....	32
15 & ABOVE.....	9
16 TOBACCO PRODUCTS	
1 - 4.....	15
17 TEXTILES	
1 - 4.....	13
5 - 14.....	8
15 & ABOVE.....	11
18 WEARING APPERHL DRESSING & DYING OF FUR	
1 - 4.....	88
5 - 14.....	6
15 & ABOVE.....	13
19 TRAINING & DRESSING OF LEATHER, LEATHER GOODS & FOOTWEAR	
1 - 4.....	7
5 - 14.....	2
15 & ABOVE.....	4
20 WOOD & WOOD PRODUCTS, EXCEPT FURNITURE	
1 - 4.....	38
5 - 14.....	12
15 & ABOVE.....	3
21 PAPER & PAPER PRODUCTS	
1 - 4.....	33
5 - 14.....	13
15 & ABOVE.....	1
24 CHEMICALS & CHEMICAL PRODUCTS	
1 - 4.....	5
5 - 14.....	5
15 & ABOVE.....	5
25 RUBBER & PLASTICS PRODUCTS	
1 - 4.....	26
5 - 14.....	12
15 & ABOVE.....	12
26 OTHER NON-METALIC MINERAL PRODUCTS	
1 - 4.....	39
5 - 14.....	12
27 BASIC METAL INDUSTRIES	
1 - 4.....	1
5 - 14.....	1
15 & ABOVE.....	3
28 FABRICATED METAL PRODUCTS, EXCEPT MACHINERY & EQUIPMENT	
1 - 4.....	68
5 - 14.....	21
15 & ABOVE.....	5

* - MINING & QUARRYING AND MANUFACTURING

(continued)

TABLE 10: DISTRIBUTION OF ESTABLISHMENTS* & PERSONS ENGAGED BY DIVISIONAL
SECRETARY DIVISION & PERSONS ENGAGED SIZE CLASS
GANPAHA DISTRICT - RURAL SECTOR - 1995

D.S.DIVISION & INDUSTRY DIVISION	NO.OF ESTABLISHMENTS
29 MACHINERY & EQUIPMENT N.B.C.	
1 - 4.....	3
5 - 14.....	2
15 & ABOVE.....	2
31 ELECTRICAL MACHINERY & APPARATUS N.B.C.	
5 - 14.....	1
35 OTHER TRANSPORT EQUIPMENT	
1 - 4.....	1
36 MANU.OF FURNITURE, MANUFACTURING N.B.C.	
1 - 4.....	15
5 - 14.....	3
15 & ABOVE.....	3
99 OTHER PRODUCT	
1 - 4.....	4
5 - 14.....	1
15 & ABOVE.....	4
WEEK-KIRINDINELA	
14 OTHER MINING & QUARRYING	
1 - 4.....	66
5 - 14.....	57
15 & ABOVE.....	9
15 FOOD PRODUCTS & BEVERAGES	
1 - 4.....	237
5 - 14.....	24
15 & ABOVE.....	2
16 TOBACCO PRODUCTS	
1 - 4.....	24
5 - 14.....	3
17 TEXTILES	
1 - 4.....	45
5 - 14.....	5
15 & ABOVE.....	3
18 WEARING APPREL DRESSING & DYEING OF FUR	
1 - 4.....	134
5 - 14.....	4
15 & ABOVE.....	1
19 TRAINING & DRESSING OF LEATHER, LEATHER GOODS & FOOTWEAR	
1 - 4.....	15
5 - 14.....	3
20 WOOD & WOOD PRODUCTS, EXCEPT FURNITURE	
1 - 4.....	144
5 - 14.....	14
15 & ABOVE.....	3
21 PAPER & PAPER PRODUCTS	
1 - 4.....	9
15 & ABOVE.....	1

* - MINING & QUARRYING AND MANUFACTURING

(continued)

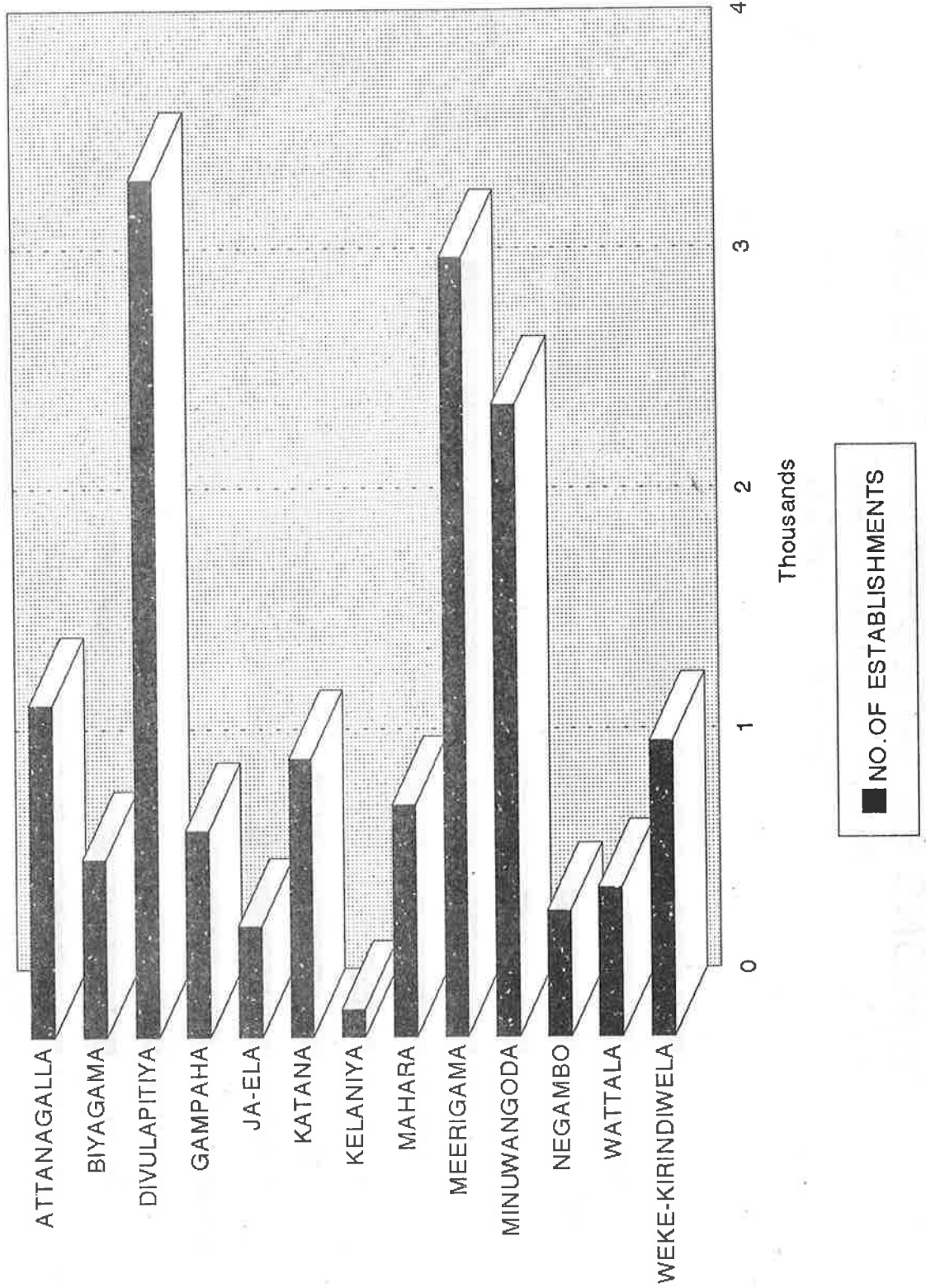
**TABLE 10: DISTRIBUTION OF ESTABLISHMENT* & PERSONS ENGAGED BY DIVISIONAL
SECRETARY DIVISION & PERSONS ENGAGED SIZE CLASS
GAMPAHA DISTRICT - RURAL SECTOR - 1995**

D.S.DIVISION & INDUSTRY DIVISION	NO.OF ESTABLISHMENTS
22 PUBLISHING, PRINTING & REPRODUCTION OF RECORDED MEDIA	
1 - 4.....	5
24 CHEMICALS & CHEMICAL PRODUCTS	
1 - 4.....	6
5 - 14.....	3
15 & ABOVE.....	1
25 RUBBER & PLASTICS PRODUCTS	
1 - 4.....	120
5 - 14.....	4
15 & ABOVE.....	2
26 OTHER NON-METALIC MINERAL PRODUCTS	
1 - 4.....	142
5 - 14.....	13
15 & ABOVE.....	1
27 BASIC METAL INDUSTRIES	
1 - 4.....	3
5 - 14.....	1
15 & ABOVE.....	2
28 FABRICATED METAL PRODUCTS, EXCEPT MACHINERY & EQUIPMENT	
1 - 4.....	37
5 - 14.....	4
29 MACHINERY & EQUIPMENT N.E.C.	
1 - 4.....	2
34 MOTOR VEHICLES, TRAILERS & SEMI-TRAILERS	
5 - 14.....	1
36 MANU.OF FURNITURE, MANUFACTURING N.E.C.	
1 - 4.....	77
5 - 14.....	2
99 OTHER PRODUCT	
1 - 4.....	1
TOTAL.....	17,524

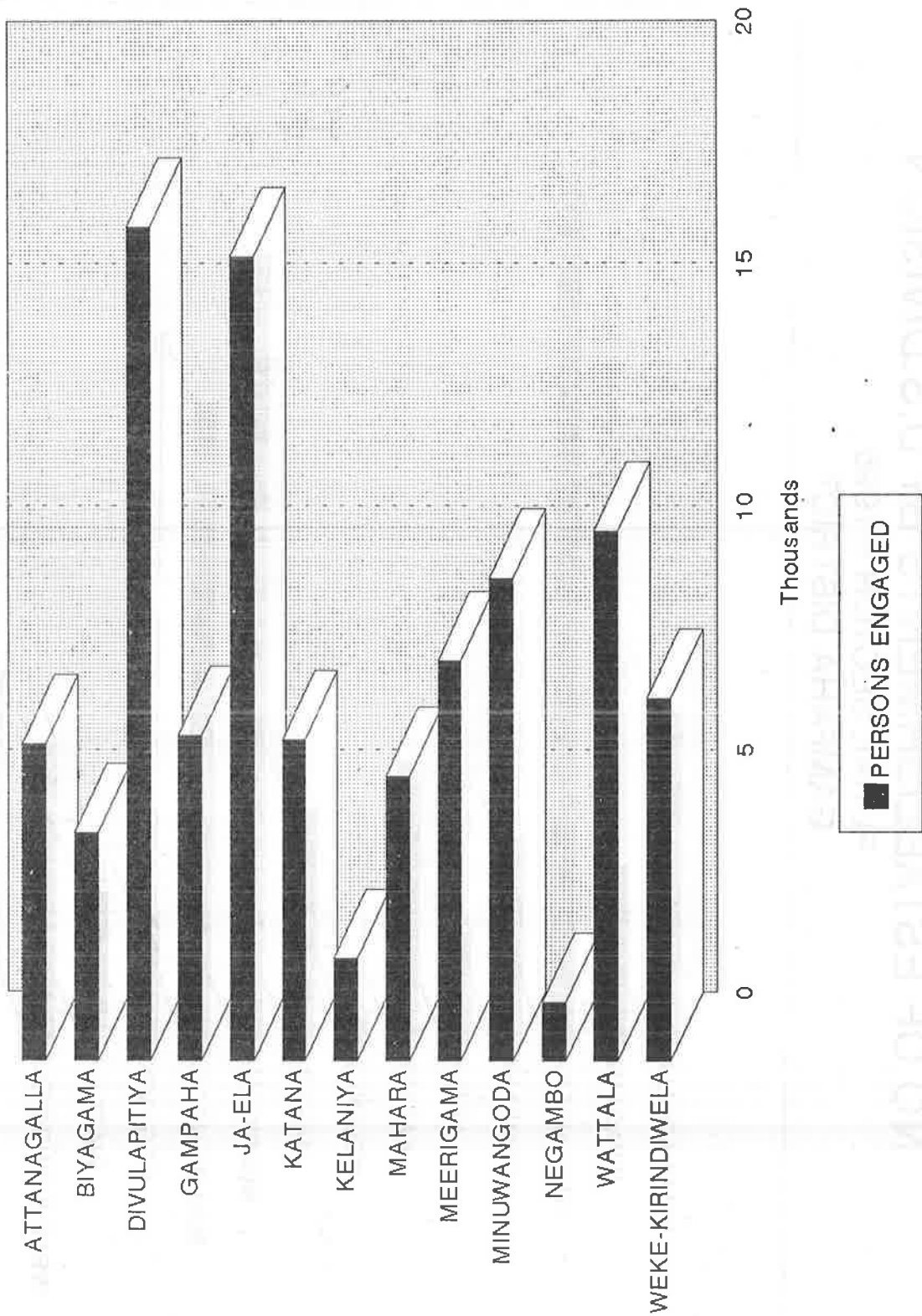
* - MINING & QUARRYING AND MANUFACTURING

NO.OF ESTABLISHMENTS BY D.S.DIVISION

RURAL SECTOR - 1995
GAMPAHA DISTRICT

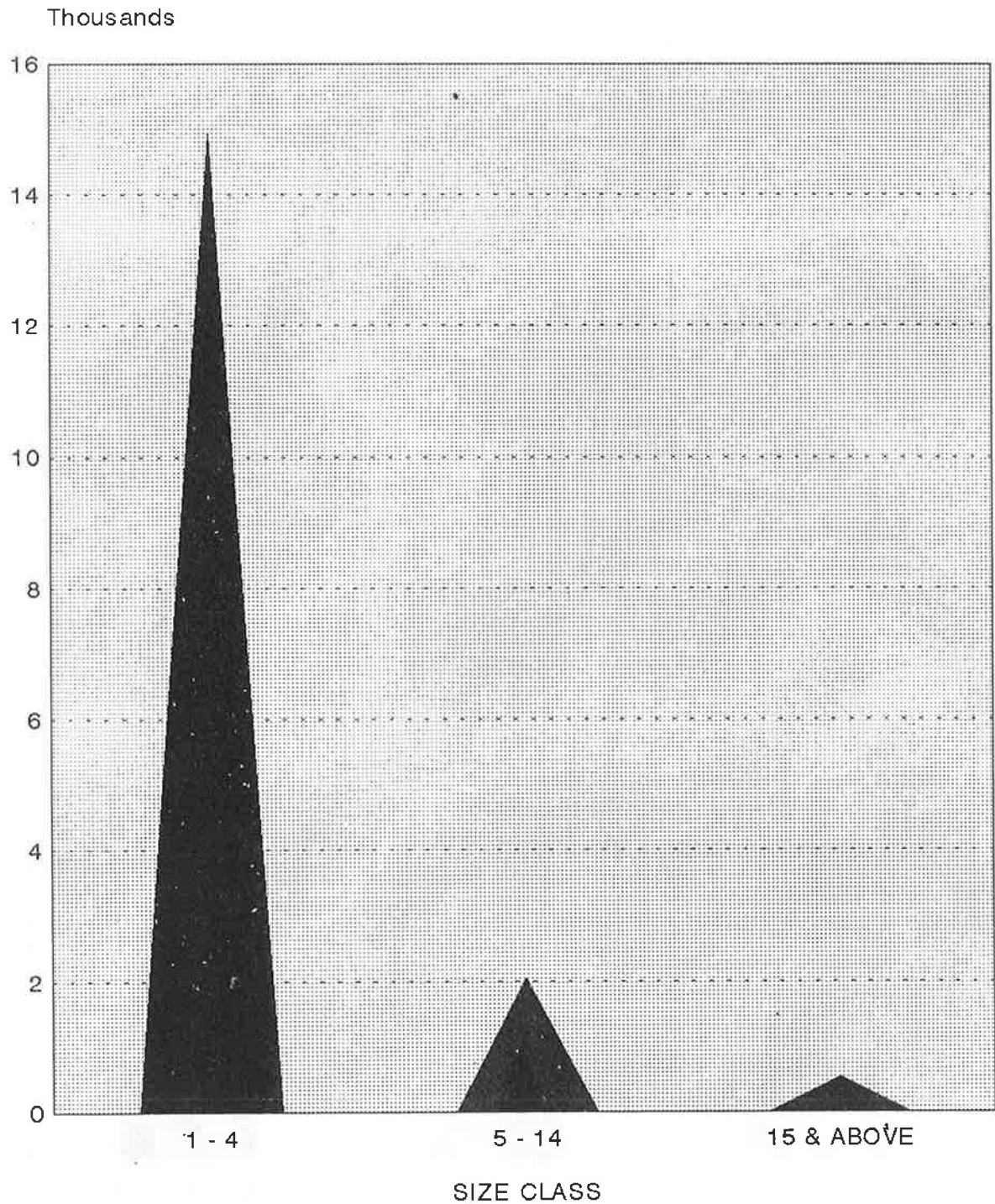


PERSONS ENGAGED BY D.S.DIVISION RURAL SECTOR - 1995 GAMPAHA DISTRICT



NO.OF ESTABLISHMENT BY PERSONS ENGAGED SIZE CLASS

RURAL SECTOR - 1995
GAMPAHA DISTRICT

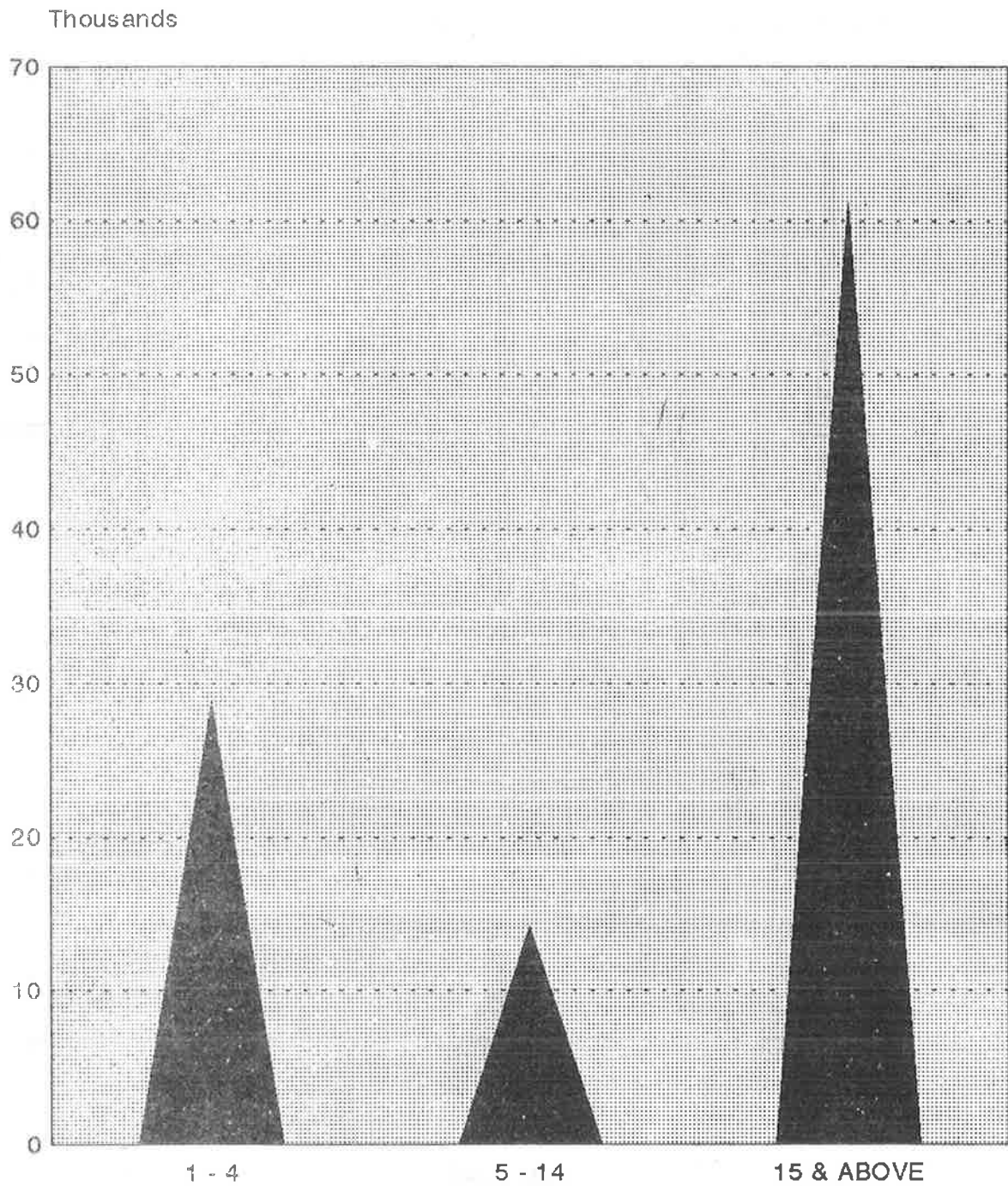


▲ NO.OF ESTABLISHMENTS

PERSONS ENGAGED BY SIZE CLASS

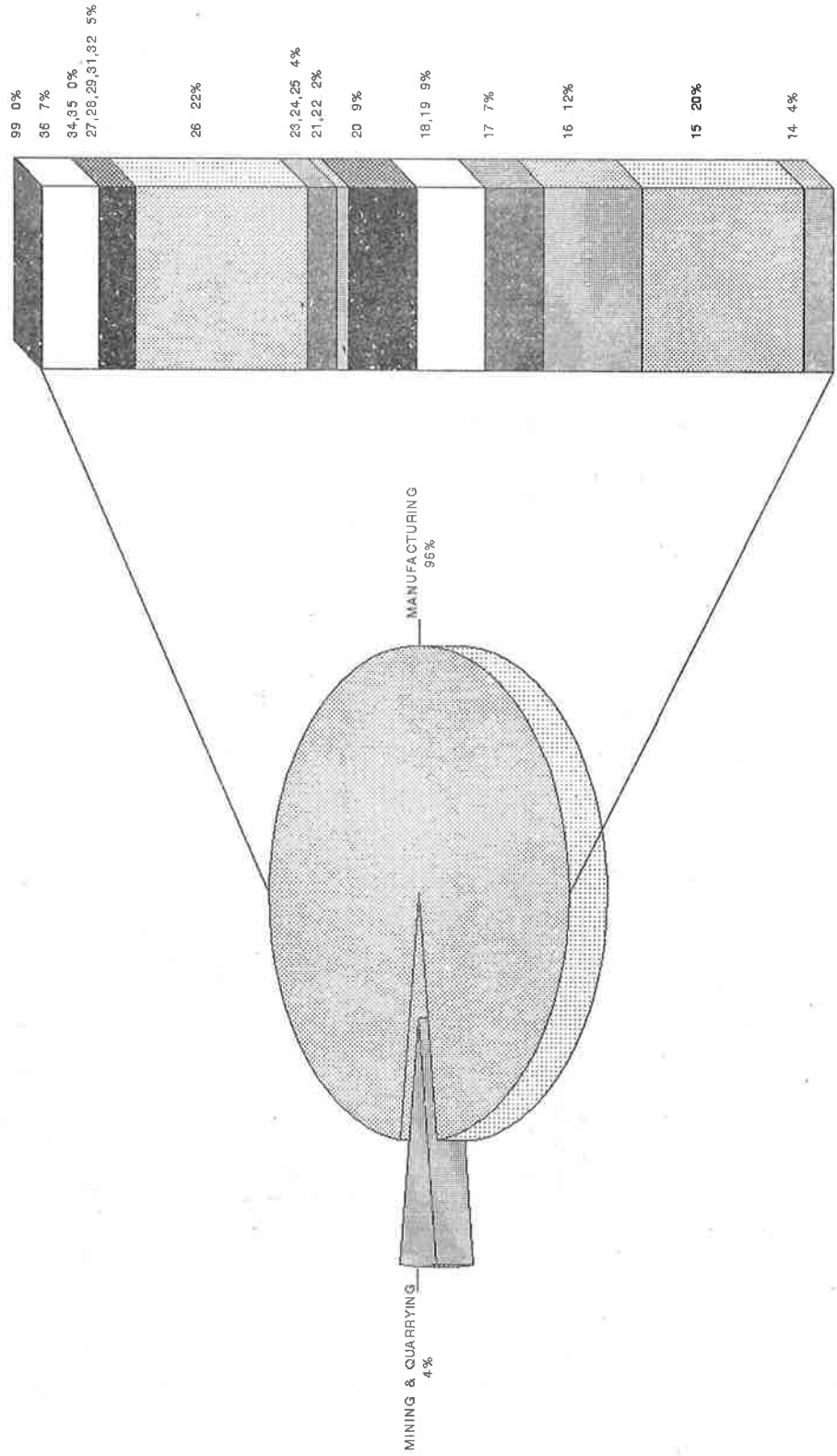
RURAL SECTOR - 1995

GAMPAHA DISTRICT



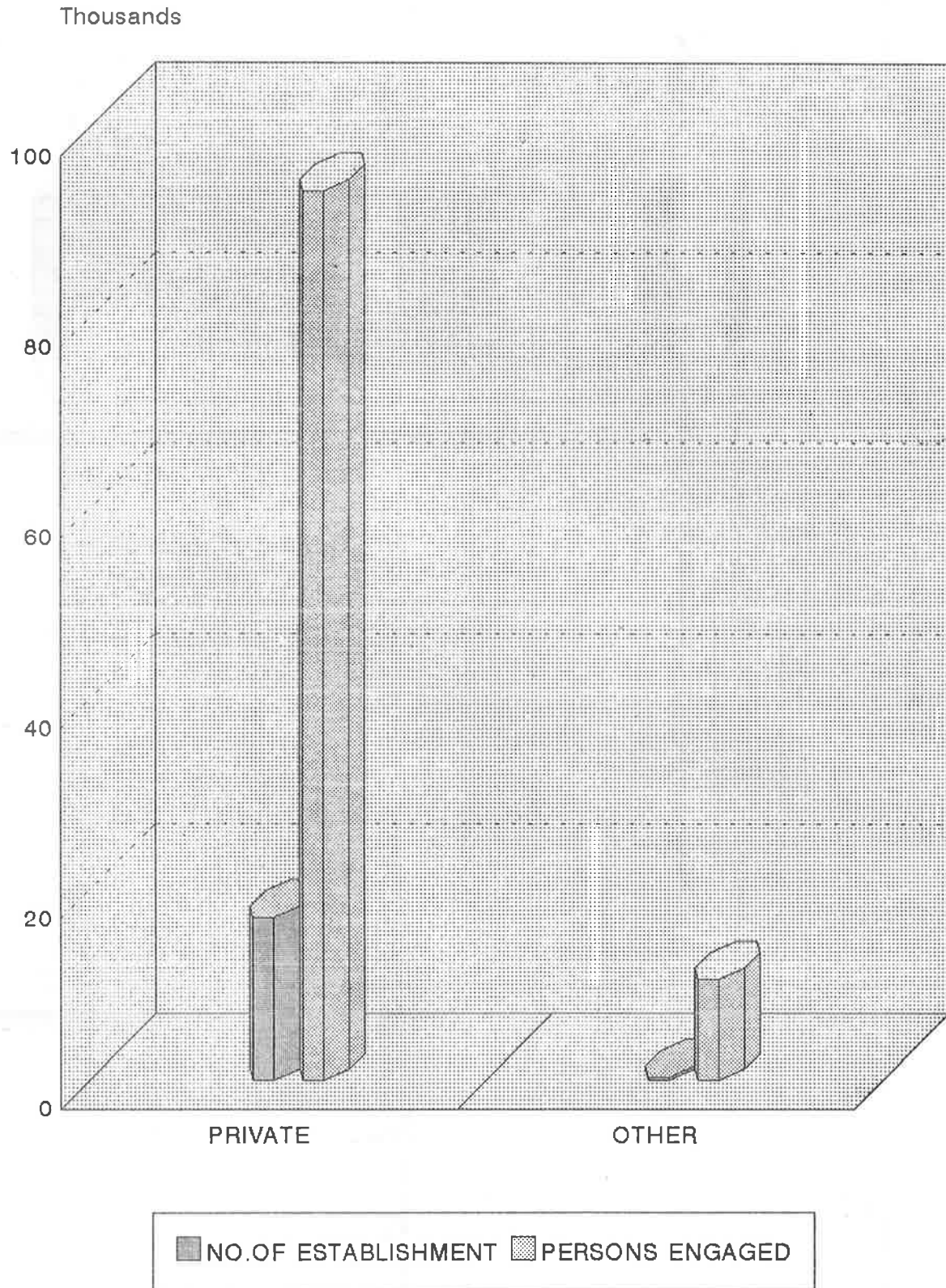
▲ PERSONS ENGAGED

NO.OF ESTABLISHMENTS BY INDUSTRY DIVISION RURAL SECTOR - 1995 GAMPAHA DISTRICT



NO.OF ESTABLISHMENT & PERSONS ENGAGED BY TYPE OF SECTOR

RURAL SECTOR - 1995
GAMPAHA DISTRICT



L
 පොත්
 අංකය



ජනලේඛන හා සංඛ්‍යාලේඛන දෙපාර්තමේන්තුව
කෘෂිකාර්මික නොවන ආර්ථික කටයුතු ලැයිස්තුගත කිරීම - 1995
 (සියළුම ගොවිතැනිලි සඳහා)

ප්‍රාථමික ඒකකය පිළිබඳ විස්තර

01. දිස්ත්‍රික්කය:.....	<input type="checkbox"/>	<input type="checkbox"/>																																																
02. ප්‍රාදේශීය ලේකම් කොට්ඨාසය:.....	<input type="checkbox"/>	<input type="checkbox"/>																																																
03. මැතිවරණ කොට්ඨාසය:.....	<input type="checkbox"/>	<input type="checkbox"/>																																																
04. ග්‍රාම නිලධාරී කොට්ඨාසය:.....	<input type="checkbox"/>	<input type="checkbox"/>																																																
05. අංශය: 1. නාගරික 2. ග්‍රාමීය 3. වතු	<input type="checkbox"/>	<input type="checkbox"/>																																																
06. ම.ත.ස./ ත.ස./ ප්‍රාදේශීය සහති:.....	<input type="checkbox"/>	<input type="checkbox"/>																																																
07. ප්‍රාථමික ඒකකය තුළ පිහිටි තාගරික කොට්ඨාස/ ගම්/ වතු/ල නම්:	<table border="1"> <tr><td>1</td><td>.....</td><td><input type="checkbox"/></td><td><input type="checkbox"/></td><td>7</td><td>.....</td><td><input type="checkbox"/></td><td><input type="checkbox"/></td></tr> <tr><td>2</td><td>.....</td><td><input type="checkbox"/></td><td><input type="checkbox"/></td><td>8</td><td>.....</td><td><input type="checkbox"/></td><td><input type="checkbox"/></td></tr> <tr><td>3</td><td>.....</td><td><input type="checkbox"/></td><td><input type="checkbox"/></td><td>9</td><td>.....</td><td><input type="checkbox"/></td><td><input type="checkbox"/></td></tr> <tr><td>4</td><td>.....</td><td><input type="checkbox"/></td><td><input type="checkbox"/></td><td>10</td><td>.....</td><td><input type="checkbox"/></td><td><input type="checkbox"/></td></tr> <tr><td>5</td><td>.....</td><td><input type="checkbox"/></td><td><input type="checkbox"/></td><td>11</td><td>.....</td><td><input type="checkbox"/></td><td><input type="checkbox"/></td></tr> <tr><td>6</td><td>.....</td><td><input type="checkbox"/></td><td><input type="checkbox"/></td><td>12</td><td>.....</td><td><input type="checkbox"/></td><td><input type="checkbox"/></td></tr> </table>	1	<input type="checkbox"/>	<input type="checkbox"/>	7	<input type="checkbox"/>	<input type="checkbox"/>	2	<input type="checkbox"/>	<input type="checkbox"/>	8	<input type="checkbox"/>	<input type="checkbox"/>	3	<input type="checkbox"/>	<input type="checkbox"/>	9	<input type="checkbox"/>	<input type="checkbox"/>	4	<input type="checkbox"/>	<input type="checkbox"/>	10	<input type="checkbox"/>	<input type="checkbox"/>	5	<input type="checkbox"/>	<input type="checkbox"/>	11	<input type="checkbox"/>	<input type="checkbox"/>	6	<input type="checkbox"/>	<input type="checkbox"/>	12	<input type="checkbox"/>	<input type="checkbox"/>	<input type="checkbox"/>
1	<input type="checkbox"/>	<input type="checkbox"/>	7	<input type="checkbox"/>	<input type="checkbox"/>																																											
2	<input type="checkbox"/>	<input type="checkbox"/>	8	<input type="checkbox"/>	<input type="checkbox"/>																																											
3	<input type="checkbox"/>	<input type="checkbox"/>	9	<input type="checkbox"/>	<input type="checkbox"/>																																											
4	<input type="checkbox"/>	<input type="checkbox"/>	10	<input type="checkbox"/>	<input type="checkbox"/>																																											
5	<input type="checkbox"/>	<input type="checkbox"/>	11	<input type="checkbox"/>	<input type="checkbox"/>																																											
6	<input type="checkbox"/>	<input type="checkbox"/>	12	<input type="checkbox"/>	<input type="checkbox"/>																																											

විස්තරය	පිටු ගණන	ඒකක ගණන
1. නිවාස හා අනෙකුත් ගොවිතැනිලි (L)	<input type="checkbox"/>	<input type="checkbox"/>
2. කර්මාන්ත ගණන (L1)	<input type="checkbox"/>	<input type="checkbox"/>
3. වෙළෙඳ හා සේවා ආයතන	<input type="checkbox"/>	<input type="checkbox"/>
4. සාදන ලද ගොවිතැනිලි ගණන (L3)	<input type="checkbox"/>	<input type="checkbox"/>
5. සාමාන්‍යයෙන් පදිංචි පුද්ගලයින් ගණන	<input type="checkbox"/>	<input type="checkbox"/>

ලැයිස්තුගත කරන නිලධාරියාගේ නම:

අත්සන:

දිනය:

අධීක්ෂණ නිලධාරියාගේ නම:

අත්සන:

දිනය:

Printed by Department of Census and Statistics

L1

83
ஏ-காட

ජනලේඛන හා සංඛ්‍යාලේඛන දෙපාර්තමේන්තුව
காணியூதரகத் திபுத்து
කාමිකාර්මික තොවන ආර්ථික කටයුතු ලැයිස්තුගත කිරීම - 1995

(කර්මාන්ත ආයතන සඳහා)

01. දිස්ත්‍රික්කය:
 02. ප්‍රාදේශීය ලේකම් කොට්ඨාසය:
 03. ග්‍රාම නිලධාරී කොට්ඨාස අංකය: නම:

1	2	3	4 (*)	5 (*)	6	7	8	9	10
කාර්යාලයේ වෛමාන ප්‍රධානියා	ව්‍යාපාරයේ/ අයිතිකරුගේ නම (ව්‍යාපාරයේ නමට සාමාන්‍යයෙන් සම්පූර්ණ නම දැක්විය යුතුය.)	කැපුල් ලිපිනය (අංකය, වර්ග, ගම, කැපුල් නම සහිතව පිළිවෙලින් ඉංග්‍රීසි හා දෙමළ භාෂාවෙන් දැක්විය යුතුය.)	4 (*) (ලියවුණු අකුරින්)	5 (*) (ලියවුණු අකුරින්)	6 කාර්යාලයේ ස්වභාවය	7 ප්‍රධාන නිමැවුණු (නිමැවුණු නිමැවුණු අතර ප්‍රධාන නිමැවුණු දෙපාර්තමේන්තුව)	8 දුරකථන	9	10 මෙහි ඇති දේ
						1. 2.			
						1. 2.			
						1. 2.			
						1. 2.			
						1. 2.			
						1. 2.			
						1. 2.			
						1. 2.			
						1. 2.			
						1. 2.			
						1. 2.			
						1. 2.			
						1. 2.			
						1. 2.			
						1. 2.			
						1. 2.			
						1. 2.			
						1. 2.			
						1. 2.			
						1. 2.			
						1. 2.			
						1. 2.			
						1. 2.			
						1. 2.			
						1. 2.			
						1. 2.			
						1. 2.			
						1. 2.			
						1. 2.			

L3
 83
 අංකය

ජනලේඛන හා සංඛ්‍යාලේඛන දෙපාර්තමේන්තුව
කාණිකාර්මික නොවන ආර්ථික කටයුතු ලැයිස්තුගත කිරීම - 1995
 (ගොඩනැගිලි ඉදිකිරීම සඳහා - 1995 ජනවාරි 01 සිට ජූනි 30 දක්වා)

01. දිස්ත්‍රික්කය:..... 04. අංශය: 1. නාගරික 2. ග්‍රාමීය 3. වතු.

02. ප්‍රාදේශීය ලේකම් කොට්ඨාශය:..... 05. ම.න.ය./න.ය./ප්‍රාදේශීය සභාව:.....

03. ග්‍රාම නිර්ධාරී කොට්ඨාශ අංකය:..... නම:.....

1	2	3	4	5	6	7	8
කාර්යාලය ප්‍රාදේශීය සඳහා	මෙම ජර්නලයේ පිටුපස දැක්වූ විටකට ඉදිකිරීම් කටයුත්තෙහි (එකම ජර්නලයේ ඉදිකිරීම් කිහිපයක් පිළිබඳව විවිධ ප්‍රධාන ඉදිකිරීම් වර්ග තුන අනුපිළිවෙලින් ලියන්න.)	ජා.ස.ක.ව.	1995 ජනවාරි 01 සිට ජූනි 30 තුළ කරන ලද වැඩ වෙනුවෙන් දැරූ ලදී (ප්‍රාදේශීය - 1 සාර්ථක 04) වුව විසඳීම (ලැයිස්ට්)	ඉදිකිරීම් සඳහා මුදල් යෙදවීමේ රටේ - 1 විදේශීය - 2 වෙනත් - 3 අදාළ කේතය ලියන්න.	(මෙම ජර්නලය සඳහා භූමියේ ප්‍රමාණවත් විස්තර සඳහන් කරන්න.)	ඉදිකිරීම් කටයුතු කරවන ආණ්ඩුවෙන් (කොන්ත්‍රාත්කරු/ අයිතිකරු) නම ලිවිය යුතු හෝ විවෘත අංකය	වෙනත් කරුණු
1.							
2.							
3.							
1.							
2.							
3.							
1.							
2.							
3.							
1.							
2.							
3.							
1.							
2.							
3.							

பிப்ரவரி 2021

1	2	3	4	5	6	7	8
சாதிக்கப்பட்ட இலக்குகளை அடைந்ததற்கான தகவல்	(1) உருவகம் அல்லாததற்கான தகவல் உருவகம் அல்லாததற்கான தகவல்	உருவகம் அல்லாததற்கான தகவல்	1998 சனவரி 01 பிப்ரவரி 30 க்குள் அடங்கிய உருவகம் அல்லாததற்கான தகவல் (உருவகம் அல்லாததற்கான தகவல்) (உருவகம் அல்லாததற்கான தகவல்)	உருவகம் அல்லாததற்கான தகவல்	உருவகம் அல்லாததற்கான தகவல்	உருவகம் அல்லாததற்கான தகவல்	உருவகம் அல்லாததற்கான தகவல்
		உருவகம் அல்லாததற்கான தகவல்	உருவகம் அல்லாததற்கான தகவல்	உருவகம் அல்லாததற்கான தகவல்	உருவகம் அல்லாததற்கான தகவல்	உருவகம் அல்லாததற்கான தகவல்	உருவகம் அல்லாததற்கான தகவல்
	1. உருவகம் அல்லாததற்கான தகவல்						
	2. உருவகம் அல்லாததற்கான தகவல்						
	3. உருவகம் அல்லாததற்கான தகவல்						
	1. உருவகம் அல்லாததற்கான தகவல்						
	2. உருவகம் அல்லாததற்கான தகவல்						
	3. உருவகம் அல்லாததற்கான தகவல்						
	1. உருவகம் அல்லாததற்கான தகவல்						
	2. உருவகம் அல்லாததற்கான தகவல்						
	3. உருவகம் அல்லாததற்கான தகவல்						
	1. உருவகம் அல்லாததற்கான தகவல்						
	2. உருவகம் அல்லாததற்கான தகவல்						
	3. உருவகம் அல்லாததற்கான தகவல்						
	1. உருவகம் அல்லாததற்கான தகவல்						
	2. உருவகம் அல்லாததற்கான தகவல்						
	3. உருவகம் அல்லாததற்கான தகவல்						

உருவகம் அல்லாததற்கான தகவல்: உருவகம் அல்லாததற்கான தகவல்:

**PUBLICATIONS OF THE
DEPARTMENT OF CENSUS AND STATISTICS
AVAILABLE FOR SALES
AT
THE SAMPLE SURVEY DIVISION,
DEPARTMENT OF CENSUS AND STATISTICS,
16/7, ALBERT CRESCENT, COLOMBO 07.
Telephone 695962 - Ext. 17.**

Name of Publication	** GENERAL PURPOSE PUBLICATION *	Year	Price
1. Statistical Pocket Book in English		1988	46.00
2. Statistical Pocket Book in English		1990	39.00
3. Statistical Pocket Book in English		1994	50.00
4. Statistical Pocket Book in English		1995	50.00
5. Statistical Pocket Book in English		1997	52.50
6. Statistical Pocket Book in English		1998	53.00
7. Statistical Pocket Book in Sinhala and Tamil		1987	46.00
8. Statistical Pocket Book in Sinhala and Tamil		1988	79.00
9. Statistical Pocket Book in Sinhala and Tamil		1990	161.00
10. Statistical Pocket Book in Sinhala and Tamil		1991	175.00
11. Statistical Pocket Book in Sinhala and Tamil		1993	189.00
12. Statistical Pocket Book in Sinhala and Tamil		1994	119.00
13. Statistical Abstract in English		1989	203.00
14. Statistical Abstract in English		1992	285.00
15. Statistical Abstract in English		1993	300.00
16. Statistical Abstract in English		1996	248.00
17. Statistical Abstract in English		1997	210.00
18. Administration Report of Director General Census & Statistics		1995	50.00
19. Administration Report of Director General Census & Statistics		1996	50.00
20. Administration Report of Director General Census & Statistics		1997	53.00
Population and Demography			
1. Census of Population and Housing - (Physically disabled person)		1981	20.00
2. Census of Population and Housing - District Report (each)		1981	50.00
3. Sri Lanka Demographic and Health Survey		1993	310.00
4. Demographic Survey 1994 Sri Lanka (Report on Demographic Characteristics of the Population) Release 3		1994	124.00
5. Demographic Survey 1994 Sri Lanka (Report on Demographic and Housing Characteristics) Release 4		1994	110.00
6. Grama Niladhari Divisions of Sri Lanka		1996	295.00
Agriculture			
1. Estimation of Sown Area under Paddy Cultivation (Alternative to complete enumeration)		1991/95	19.50
2. Food Balance Sheet (Revised Series)		1992/96	33.00
3. Food Balance Sheet (Revised Series)		1992/97	35.00
4. Food Balance Sheet (Revised Series)		1992/97	39.00
5. Paddy Statistics (Seasonal Report) each			20.00
6. Rubber Cultivation in Sri Lanka		1993	40.00
7. States and Role of Cinnamon Cultivation in Sri Lanka		1993	70.00
8. Cardamon "The Queen of spices" and Distribution in Sri Lanka		1993	68.00
9. Rambutan Cultivation in Sri Lanka		1993	43.00
10. Sowing and Harvesting periods of Paddy Cultivation in Sri Lanka		1994	80.00
11. Agricultural Statistics of Sri Lanka		1995	97.00
12. Paddy Statistics of Sri Lanka		1952/96	
a) With diskette			241.00
b) Without diskette			191.00

13. Agricultural crops and Livestock survey (Preliminary Reports)

1.	Badulla	1992/93	80.00
2.	Colombo	1992/93	56.50
3.	Galle	1992/93	70.00
4.	Hambantota	1992/93	75.00
5.	Kalutara	1992/93	78.00
6.	Kegalle	1992/93	56.00
7.	Kurunegala	1992/93	160.00
8.	Matara	1992/93	61.00
9.	Moneragala	1992/93	53.00
10.	Ratnapura	1992/93	85.00
11.	Mahaweli System 'H'	1993/94	40.00
12.	Puttalam	1993/94	71.00
13.	Polonnaruwa	1993/94	44.00
14.	Anuradhapura	1993/94	90.50

Trade and Industry

1.	Annual Survey of Industries	1991	30.00
2.	Annual Survey of Industries	1992/93/94 (each)	37.00
3.	Annual Survey of Industries	1995/96/97(each)	39.00
4.	Annual survey of Industries (Interim Report)	1996	28.00
5.	Annual survey of construction Industries	1993/94	64.00

National Accounts

1.	National Accounts of Sri Lanka	1993	102.00
2.	National Accounts of Sri Lanka	1994	111.00
3.	National Accounts of Sri Lanka (Sinhala)	1994	123.00
4.	National Accounts of Sri Lanka (Sinhala)	1995	143.00
5.	National Accounts of Sri Lanka	1996	150.00
6.	National Accounts of Sri Lanka	1997	165.00

Prices and Wages

1.	Bulletin of Selected Retail Prices	1975/90	62.50
2.	Bulletin of Selected Retail Prices	1975/91	60.00
3.	Bulletin of Selected Retail Prices	1975/92	77.00
4.	Bulletin of Selected Retail Prices	1995	127.00
5.	Bulletin of Selected Retail Prices	1996	124.00
6.	Weekly Retail Prices - (Colombo City)		
	i. Bulletin No. II	1991/92	30.00
	ii. Bulletin No. III	1992/93	25.00
	iii. Bulletin No. IV	1993/94	43.50
	iv. Bulletin No. V	1995	38.00
	v. Bulletin No. VI	1996	43.00

Survey Report

1.	Quarterly Report of the Sri Lanka Labour Force Survey		
	i. Quarterly Report each	1993	40.00
	ii. Quarterly Report each	1994	45.00
	iii. 1st Quarter	1995	55.00
	iv. 2nd Quarter	1995	65.00
	v. 3rd and 4th Quarter each	1995	64.00
	vi. Quarterly Report (each)	1996	64.00
	vii. Quarterly Report (each)	1997	69.00
	viii. 1st Quarter	1998	70.00
2.	Sri Lanka Labour Force Survey (Sinhala)	1992	50.00
3.	Provincial Profile of Labour Force Sri Lanka	1993	122.00
4.	Provincial Profile of Labour Force Sri Lanka	1996	73.00

Other Reports

1.	Women and Men in Sri Lanka (Tamil)		133.00
2.	Changing Role of Women in Sri Lanka (English)		200.00
3.	Statistical Data Sheets 1996 (Sinhala, Tamil, English) (each)		5.00
4.	Listing of Non-agricultural Economic Activities (Rural Sector)	1995	29.00

ISBN 955 - 577 - 248 - 7

Printed by: Printing Division, Dept. of Census & Statistics.