



SRI LANKA

**LISTING OF NON - AGRICULTURAL
ECONOMIC ACTIVITIES
1995**

Rural Sector

District Report

Kandy District

*Department of census and statistics
Ministry of finance and planning*

**LISTING OF NON - AGRICULTURAL
ECONOMIC ACTIVITIES
1995**

Rural Sector

District Report

Kandy District

LISTING OF NON-ALIGNED STATES

ECONOMIC ACTIVITIES

1999

United States

ISBN 955 - 577 - 250 - 9

United States

United States

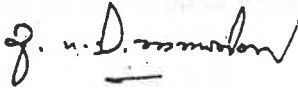
Published in 1999

PREFACE

The Department of Census and Statistics carried out a comprehensive listing of Non Agricultural Economic Activities in 1995 and covered rural areas of all provinces except Northern and Eastern provinces.

This report which includes basic Industrial statistics in the rural sector of the Kandy District is prepared to serve the immediate needs of the Grama Niladhari Division and Divisional Secretariat Divisional level data users. It is planned to publish the similar reports for all relevant Districts and the all island report.

I hope that the information presented in this document, though it is provisional will be of immense use to planners and policy makers.



A.G.W. Nanayakkara.
Director General.
Dept. of Census & Statistics,
No. 15/12,
Maitland Crescent,
Colombo 07.
30th. March 1999.

ACKNOWLEDGEMENT

The listing operation of Non- Agricultural Economic Activities was undertaken by the Department of Census & Statistics which was funded by Institute of Construction Training and Development (ICTAD). This operation was planned mainly to establish a frame of building material industries and to ascertain the out put of the construction sector.

The planning, execution and successful completion of the entire listing operation were performed by the staff of Industry and Construction Division of the Department.

Enumerators who did the listing operation at the Grama Niladhari Division level, Statistical Investigators who were responsible for data collection and the District Statisticians / Statistical Officers who coordinated the activity are acknowledged.

The staff of the Data Processing Division and Statistical Investigators attached to some District offices who were engaged in computer data entry activities are much appreciated.

Special thanks are due to District Secretary and Divisional Secretaries of the District whose fullest co-operation was very vital to the successful completion of this operation.

Preparation of this publication was done by Mr. D.S.S.Gunawardana Statistical Officer using Apple Mackintosh and the statistical tables were obtained by Mr. R.D.N. Premawansa Statistical Investigator using SPSS PC+.

Acknowledgements are also due to Mr. K. D. Siripala, Deputy Director and his staff for printing this report within a short period.

The co-operation given by the respondents is also much appreciated.

CONTENTS

	PAGE
1. PREFACE	
2. ACKNOWLEDGEMENT	
3. CONTENTS	
A. INTRODUCTION	1
B. COVERAGE	1
C. LISTING OPERATION	2
D. PREPARATION OF TABLES	2
4. TABLES	5 - 37
5. CHARTS	38 - 43
6. ANNEX	44

Table Nos:

1. No. of Establishments & persons engaged by Divisional Secretary Division 1995.	5
2. No. of Establishments & persons engaged by Divisional Secretary Division & by Sector 1995.	5
3. No. of Establishments & persons engaged by Divisional Secretary Division & by Size Class 1995.	6
4. No. of Establishments & persons engaged by Major Industry Division (ISIC 1 digit level) 1995.	6
5. No. of Establishments & persons engaged by Industry Division. (ISIC 2 digit level) 1995.	7
6. No. of Establishments & persons engaged by Major Industry Group (ISIC 3 digit level) 1995.	8
7. No. of Establishments & persons engaged by Industry Group (ISIC 4 digit level) 1995.	9

Table Nos:

Page

8.	No. of Establishments & persons engaged by Divisional Secretary Division & Major Industry Division (ISIC 1 digit level) 1995.	11
9.	No. of Establishments & persons engaged by Divisional Secretary Division & Industry Division (ISIC 2 digit level) 1995.	12
10.	Distribution of Establishments & persons engaged by Divisional Secretary Division & persons engaged size class 1995.	19

Chart Nos:

1.	No. of Establishments by Divisional Secretary Division 1995.	38
2.	Persons engaged by Divisional Secretary Division 1995.	39
3.	No. of Establishments by persons engaged size class 1995.	40
4.	Persons engaged by size class 1995.	41
5.	No. of Establishments by Industry Division 1995.	42
6.	No. of Establishments & persons engaged by Type of Sector 1995.	43

Listing of Non Agricultural Economic Activities - 1995

A. Introduction

Listing of Non Agricultural Economic Activities was conducted in stage is in Rural Sector covering all districts except the districts in Northern & Eastern Provinces. The main objective of this exercise was to identify the building material producing units and to compile the value of construction output of the housing sector as required by ICTAD. However, in order to make the exercise complete all non agricultural activities were enumerated.

A Grama Niladhari (GN) Division or a part of GN Division was considered as an enumeration area and enumerators were appointed by the Divisional Secretary of the area. The enumerator prepared a list of non agricultural economic activities by visiting each and every building in the enumeration area under the supervision of District Statistical Staff and the Head Office Staff.

B. Coverage

i. Economic Activities

The following Economic Activities were covered by the listing of non-agricultural economic activities.

1. Mining and Quarrying
2. Manufacturing
3. Electricity, Gas production & Water supply
4. Trade, Hotels and restaurants
5. Transport, Communication & Storage
6. Finance, Insurance, Real estate and business services
7. Public Administration, Education & Health activities
8. Community and Social Service & Private service activities
9. Construction

ii Area

This listing operation covered only the rural sector in Sri Lanka and did not cover:

1. Northern and Eastern Provinces
2. All Municipal Councils and Urban Councils
3. Areas covered by the Board of Investment

C. Listing Operation

The recruited enumerators were given a two days training by panel of trainers selected and trained for that purpose in advance. An enumerator is assigned to each enumeration area which is usually a GN Division . When the GN Division is spread over a larger area or has a large number of housing units / buildings, the GN Division is divided into two enumeration areas.

The enumerators were asked to complete one line in the listing form (L) for each housing unit / building with the following information.

1. Name of the owner proprietor of the enterprise/chief occupant
2. Postal address
3. Nature of the unit
4. Type of Economic activity
5. Type of construction activity
6. Numbe of residents

If the housing unit/building was having the activities on

1. Mining and quarrying
2. Manufacturing
3. Electricity, Gas and Water

The following further information is inserted to the L1 form.

1. Economic Organization of the Establishment
2. Type of ownership of the establishment
3. Type of Industry
4. Major Products produced by the establishment
5. Persons engaged in the industry

Further if the housing units/building had done some construction activities during the reference period that too were included in an another form called L 3 with the following additional information.

1. Type of the Construction Activity done during the period from January to June in 1995
2. Expenditure/Estimated expenditure incurred during the period
3. Source of funds

D. Preparation of Tables

The information collected by the enumerators through L1 form was checked or completeness and data coded by the range Statistical Investigator under the supervision of the District Statistician/Statistical Officer. When two major products were given for an establishment, but products were coded using the information available in column 6 & 7. However the code for the 1st product is considered as the code relevant for the whole establishment in the tabulation procedure.

In most of the districts, data entry was done at the District Office itself using the personal computers available there. However L1 forms relevant to few districts were fed to the computer by the Data Processing Division of the Department.

The tabulation was done by the Industry and Construction Division using the SPSS PC+ package. The tables consist number of establishments and the persons engaged by Divisional Secretary Division and ISIC two digit level (Revision 3) in one set and ISIC 4 digit level (Revision 03) at district level in the other set. In cases when it is felt that the individual identification is disclosed, the information is either combined with another category or suppressed.

மேலும் இவ்வாறு செய்து கொள்ளும்படி கேட்டுக் கொள்கிறேன். இவ்வாறு செய்து கொள்ளும்படி கேட்டுக் கொள்கிறேன். இவ்வாறு செய்து கொள்ளும்படி கேட்டுக் கொள்கிறேன்.

இவ்வாறு செய்து கொள்ளும்படி கேட்டுக் கொள்கிறேன். இவ்வாறு செய்து கொள்ளும்படி கேட்டுக் கொள்கிறேன். இவ்வாறு செய்து கொள்ளும்படி கேட்டுக் கொள்கிறேன்.

TABLE 1: NO. OF ESTABLISHMENT* & PERSONS ENGAGED BY DIVISIONAL
SECRETARY DIVISION
KANDY DISTRICT - RURAL SECTOR - 1995

D. S. DIVISION	NO. OF ESTABLISHMENTS	PERSONS ENGAGED
AKURANA.....	306	1,177
GANGA THALA KORALE.....	154	978
HARISPATTUWA.....	1,112	3,334
KANDY FOUR GRAVETS & GANGAWATA KORALE..	227	1,312
KUNDASALE.....	1,055	6,989
MEDADUMBARA.....	536	2,491
MINIPE.....	447	1,488
PANWILA.....	132	1,996
PASBAGE KORALE (MAWALAPITIYA).....	159	1,161
PATHADUMBARA.....	494	2,765
PATHANEVAHETA.....	579	4,718
POOJAPITIYA.....	1,243	2,709
THUMPANE.....	1,152	8,052
UDADUMBARA.....	423	2,595
UDAPALATHA (GAMPOLA).....	617	2,292
UDUNUWARA.....	960	5,784
VELIGALLA.....	472	1,543
YYINUWARA.....	920	4,218
TOTAL.....	10,988	55,602

* - MINING & QUARRYING AND MANUFACTURING

TABLE 2: NO. OF ESTABLISHMENT* & PERSONS ENGAGED BY DIVISIONAL SECRETARY DIVISION & BY SECTOR
KANDY DISTRICT - RURAL SECTOR - 1995

D. S. DIVISION	TYPE OF SECTOR			
	PRIVATE **		OTHER	
	NO. OF ESTABLISHMENTS	PERSONS ENGAGED	NO. OF ESTABLISHMENTS	PERSONS ENGAGED
AKURANA.....	306	1,177	.	.
GANGA THALA KORALE.....	152	975	2	3
HARISPATTUWA.....	1,058	3,227	54	107
KANDY FOUR GRAVETS & GANGAWATA KORALE..	220	1,250	7	62
KUNDASALE.....	1,026	5,912	29	1,077
MEDADUMBARA.....	522	2,252	14	239
MINIPE.....	441	1,455	6	33
PANWILA.....	124	1,775	8	221
PASBAGE KORALE (MAWALAPITIYA).....	149	541	10	620
PATHADUMBARA.....	485	2,671	9	94
PATHANEVAHETA.....	560	3,542	19	1,176
POOJAPITIYA.....	1,228	2,638	15	71
THUMPANE.....	1,134	7,843	18	209
UDADUMBARA.....	419	2,085	4	510
UDAPALATHA (GAMPOLA).....	575	1,904	42	388
UDUNUWARA.....	953	5,723	7	61
VELIGALLA.....	468	1,359	4	184
YYINUWARA.....	905	3,781	15	437
TOTAL.....	10,725	50,110	263	5,492

* - MINING & QUARRYING AND MANUFACTURING

** - EXCLUDING B.O.I.

TABLE 3: NO. OF ESTABLISHMENT* & PERSONS ENGAGED BY DIVISIONAL SECRETARY DIVISION & BY SIZE CLASS
KANDY DISTRICT - RURAL SECTOR - 1995

D.S. DIVISION	PERSONS ENGAGED SIZE CLASS					
	1 - 4		5 - 14		15 & ABOVE	
	NO. OF ESTABLISHMENTS	PERSONS ENGAGED	NO. OF ESTABLISHMENTS	PERSONS ENGAGED	NO. OF ESTABLISHMENTS	PERSONS ENGAGED
AKURANA.....	260	455	38	287	8	435
GANGA IHALA KORALE.....	132	220	10	82	12	676
HARISPATTUWA.....	959	1,474	132	967	21	893
KANDY FOUR GRAVITS & GANGAWATA KORALE.....	185	368	29	194	13	750
KUNDASALE.....	892	1,527	119	871	44	4,591
MEDADUMBARA.....	445	706	73	533	18	1,252
MINIPH.....	420	719	22	144	5	625
PANWILA.....	120	178	3	25	9	1,793
PASBAGE KORALE (NAWALAPITIYA)	139	243	12	87	8	831
PATHADUMBARA.....	362	551	116	850	16	1,364
PATTAHWAHNTA.....	510	904	58	404	11	3,410
POOJAPITIYA.....	1,162	1,406	60	485	21	818
THUMPANE.....	1,071	1,550	64	469	17	6,033
UDADUMBARA.....	253	516	152	1,068	18	1,011
UDAPALATHA (GAMPOLA).....	521	802	64	497	32	993
UDUNWARA.....	838	1,544	109	813	13	3,427
WELIGALLA.....	379	721	88	580	5	242
YTIWUWARA.....	783	1,301	106	750	31	2,167
TOTAL.....	9,431	15,185	1,255	9,106	302	31,311

* - MINING & QUARRYING AND MANUFACTURING

TABLE 4: NO. OF ESTABLISHMENT* & PERSONS ENGAGED BY MAJOR INDUSTRY DIVISION** (ISIC 1 DIGIT LEVEL)
KANDY DISTRICT - RURAL SECTOR - 1995

MAJOR INDUSTRY DIVISION	NO. OF ESTABLISHMENTS	PERSONS ENGAGED
C MINING & QUARRYING.....	824	4,384
D MANUFACTURING.....	10,164	51,218
TOTAL.....	10,988	55,602

* - MINING & QUARRYING AND MANUFACTURING

** - ISIC REVISION 03

TABLE 5: NO. OF ESTABLISHMENT* & PERSONS ENGAGED BY INDUSTRY DIVISION** (ISIC 2 DIGIT LEVEL)
KANDY DISTRICT - RURAL SECTOR - 1995

INDUSTRY DIVISION	NO. OF ESTABLISHMENTS	PERSONS ENGAGED
14 OTHER MINING & QUARRYING.....	824	4,384
15 FOOD PRODUCTS & BEVERAGES.....	2,238	10,824
16 TOBACCO PRODUCTS.....	1,925	4,977
17 TEXTILES.....	555	3,096
18 WEARING APPEREL DRESSING & DYING OF PUR.....	838	7,220
19 TRAINING & DRESSING OF LEATHER, LEATHER GOODS & FOOTWEAR...	137	800
20 WOOD & WOOD PRODUCTS, EXCEPT FURNITURE.....	1,170	5,355
21 PAPER & PAPER PRODUCTS.....	117	297
22 PUBLISHING, PRINTING & REPRODUCTION OF RECORDED MEDIA.....	19	66
24 CHEMICALS & CHEMICAL PRODUCTS.....	602	1,796
25 RUBBER & PLASTICS PRODUCTS.....	177	623
26 OTHER NON-METALIC MINERAL PRODUCTS.....	674	2,811
27 BASIC METAL INDUSTRIES.....	73	190
28 FABRICATED METAL PRODUCTS, EXCEPT MACHINERY & EQUIPMENT.....	776	5,501
29 MACHINERY & EQUIPMENT N.E.C.....	49	315
31 ELECTRICAL MACHINERY & APPARATUS N.E.C.....	9	20
32 RADIO, TELEVISION & COMMUNICATION EQUIPMENT & APPARATUS.....	11	17
34 MOTOR VEHICLES, TRAILERS & SEMI-TRAILERS.....	19	117
35 OTHER TRANSPORT EQUIPMENT.....	8	16
36 MANU. OF FURNITURE, MANUFACTURING N.E.C.....	743	5,087
99 OTHER PRODUCT.....	24	2,090
TOTAL.....	10,988	55,602

* - MINING & QUARRYING AND MANUFACTURING

** - ISIC REVISION 03

TABLE 6:NO.OF ESTABLISHMENT* & PERSONS ENGAGED BY MAJOR INDUSTRY GROUP** (ISIC 3 DIGIT LEVEL)
KANDY DISTRICT - RURAL SECTOR - 1995

MAJOR INDUSTRY GROUP	NO.OF ESTABLISHMENTS	PERSONS ENGAGED
141 QUARRYING OF STONE, SAND & CLAY.....	818	4,230
142 MINING & QUARRYING N.E.C.....	6	154
151 MEAT,FISH,FRUIT,VEGITABLE,OILS & FATS PRODUCTS.....	45	120
152 MANU. OF DAIRY PRODUCTS.....	31	262
153 GRAIN MILL,STARCHES & STARCH PRODUCTS,ANIMAL FEEDS.....	1,025	3,533
154 OTHER FOOD PRODUCTS.....	1,102	6,846
155 BEVERAGES.....	35	63
160 TOBACCO PRODUCTS.....	1,925	4,977
171 SPINNING,WEAVING & FINISHING OF TEXTILES.....	313	2,083
172 OTHER TEXTILES.....	230	1,001
173 KNITTED & CROCHTED FABRICS & ARTICLES.....	12	12
181 WEARING APPAREL, EXCEPT FUR APPAREL.....	838	7,220
191 TANNING & LEATHER.....	31	155
192 MANU.OF FOOTWEAR.....	106	645
201 SAWMILLING & PLANING OF WOOD.....	197	1,113
202 MANU.OF PRODUCTS OF WOOD,CORK,STRAW & PLAINTING MATERIALS..	973	4,242
210 PAPER & PAPER PRODUCTS.....	117	297
221 PUBLISHING.....	3	22
222 PRINTING & SERVICE ACTIVITIES RELATED TO PRINTING.....	16	44
241 BASIC CHEMICALS.....	3	13
242 OTHER CHEMICALS PRODUCTS.....	599	1,783
251 RUBBER PRODUCTS.....	160	513
252 PLASTIC PRODUCTS.....	17	110
261 GLASS & GLASS PRODUCTS.....	12	40
269 NON-METALLIC MINERAL PRODUCTS N.E.C.....	662	2,771
271 BASIC IRON & STEEL.....	11	56
272 BASIC PRECIOUS & NON-FERROUS.....	5	21
273 CASTING OF METALS.....	57	113
281 STRUCTURAL METAL PRODUCTS.....	131	286
289 OTHER FABRICATED METAL PRODUCTS.....	645	5,215
291 GENERAL PURPOSE MACHINERY.....	10	197
292 SPECIAL PURPOSE MACHINERY.....	39	118
315 ELECTRICCLAMPS & LIGHTING EQUIPMENT.....	6	12
319 OTHER ELECTRICAL EQUIPMENT N.E.C.....	3	8
321 ELECTRONIC VALVES & TUBES & OTHER ELECTRONIC COMPONENTS...	5	8
323 TELEVISION & RADIO RECEIVERS & ASSOCIATED.....	6	9
342 MANU.OF BODIES (COACHWORK) FOR MOTOR VEHICLES.....	15	85
343 PARTS & ACCESSORIES FOR MOTOR VEHICLES & ENGINES.....	4	32
359 MANU.OF TRANSPORT EQUIPMENT N.E.C.....	8	16
361 MANU.OF FURNITURE.....	443	970
369 MANUFACTURING N.E.C.....	300	4,117
999 OTHER PRODUCT.....	24	2,090
TOTAL.....	10,988	55,602

* - MINING & QUARRYING AND MANUFACTURING

** - ISIC REVISION 03

TABLE 7: NO. OF ESTABLISHMENT* & PERSONS ENGAGED BY INDUSTRY GROUP** (ISIC 4 DIGIT LEVEL)
KANDY DISTRICT - RURAL SECTOR - 1995

INDUSTRY GROUP	NO. OF ESTABLISHMENTS	PERSONS ENGAGED
1410 QUARRYING OF STONE, SAND & CLAY.....	818	4,230
1429 OTHER MINING & QUARRYING N.E.C.....	6	154
1511 PRODU., PROCESSING & PRESERVING OF MEAT & MEAT PRODUCTS...	31	89
1513 PROCESSING & PRESERVING OF FRUIT & VEGETABLES.....	11	23
1514 MANU. OF VEGETABLES & ANIMAL OILS & FATS.....	3	8
1520 DAIRY PRODUCTS.....	31	262
1531 GRAIN MILL PRODUCTS.....	1,019	3,522
1532 STARCHES & STARCH PRODUCTS.....	6	11
1541 BAKERY PRODUCTS.....	527	1,462
1542 MANUFACTURE OF SUGAR.....	112	292
1543 COCOA, CHOCOLATE & SUGAR CONFECTIONERY.....	118	303
1544 MACARONI, NOODLES, COUSCOUS & SIMILAR PRODUCTS.....	23	130
1549 OTHER FOOD PRODUCTS N.E.C.....	322	4,659
1552 WINES.....	21	30
1554 SOFT DRINKS & MINERAL WATERS.....	14	33
1600 TOBACCO PRODUCTS.....	1,925	4,977
1711 PREPARATION & SPINNING OF TEXTILE FIBRES.....	246	1,644
1712 FINISHING OF TEXTILES.....	67	439
1721 MADE-UP TEXTILE ARTICLES, EXCEPT APPAREL.....	87	724
1722 CARPETS & RUGS.....	85	140
1723 CORDAGE, ROPE, TWINE & NETTING.....	31	72
1729 OTHER TEXTILES N.E.C.....	27	65
1730 KNITTED & CROCHETED FABRICS & ARTICLES.....	12	12
1810 WEARING APPAREL, EXCEPT FUR APPAREL.....	838	7,220
1912 MANU. OF LEATHER GOODS.....	31	155
1920 FOOTWEAR.....	106	645
2010 SAWMILLING & PLANING OF WOOD.....	197	1,113
2021 VENEER SHEETS, PLYWOOD, LAMINBOARD, PARTICLE BOARD.....	13	43
2022 BUILDERS CARPENTRY & JOINERY.....	431	2,852
2023 WOODEN CONTAINERS.....	65	318
2029 OTHER PRODUCTS OF WOOD.....	464	1,029
2101 PULP, PAPER & PAPERBOARD.....	6	22
2102 CORRUGATED PAPER & PAPERBOARD & CONTAINERS.....	89	225
2109 OTHER ARTICLES OF PAPER & PAPERBOARD.....	22	50
2219 OTHER PUBLISHING.....	3	22
2221 PRINTING.....	7	22
2222 SERVICE ACTIVITIES RELATED TO PRINTING.....	9	22
2411 BASIC CHEMICALS, EXCEPT FERTILIZERS & NITROGEN COMPOUNDS..	3	13
2421 PESTICIDES & OTHER AGRO-CHEMICAL PRODUCTS.....	3	8
2422 PAINTS, VARNISHES & SIMILAR COATINGS, PRINTING INK.....	6	26
2423 PHARMACEUTICALS, MEDICINAL CHEMICALS & BOTANICAL.....	25	77
2424 SOAP, CLEANING & POLISHING PREPARATIONS, PERFUMES.....	9	34
2429 OTHER CHEMICAL PRODUCTS N.E.C.....	556	1,638
2511 RUBBER TYRES & TUBES, REBUILDING OF RUBBER TYRES.....	10	174
2519 OTHER RUBBER PRODUCTS.....	150	339
2520 PLASTIC PRODUCTS.....	17	110

* - MINING & QUARRYING AND MANUFACTURING

** - ISIC REVISION 03

(continued)

TABLE 7: NO. OF ESTABLISHMENT* & PERSONS ENGAGED BY INDUSTRY GROUP** (ISIC 4 DIGIT LEVEL)
KANDY DISTRICT - RURAL SECTOR - 1995

INDUSTRY GROUP	NO. OF ESTABLISHMENTS	PERSONS ENGAGED
2610 GLASS & GLASS PRODUCTS.....	12	40
2691 NON-STRUCTURAL NON- REFRACTORY CERAMIC WARE.....	27	84
2692 REFRACTORY CERAMIC PRODUCTS.....	85	295
2693 STRUCTURAL NONO-REFRACTORY CLAY & CERAMIC PRODUCTS.....	279	1,195
2694 CEMENT, LIME & PLASTER.....	125	473
2695 ARTICLES OF CONCRETE, CEMENT & PLASTER.....	133	398
2696 CUTTING, SHAPING & FINISHING OF STONE.....	6	12
2699 OTHER NON-METALIC MINERAL PRODUCTS N.E.C.....	7	314
2710 BASIC IRON & STEEL.....	11	56
2720 BASIC PRECIOUS & NON-FERROUS METAL.....	5	21
2731 CASTING OF IRON & STEEL.....	48	100
2732 CASTING OF NON-FERROUS METALS.....	9	13
2811 STRUCTURAL METAL PRODUCTS.....	131	286
2893 CUTLERY, HAND TOOLS & GENERAL HARDWARE.....	153	4,175
2899 OTHER FABRICATED METAL PRODUCTS.....	492	1,040
2911 ENGINES & TURBINES, EXCEPT AIRCRAFT, VEHICLE ENGINE.....	6	185
2919 OTHER GENERAL PURPOSE MACHINERY.....	4	12
2922 MACHINE-TOOLS.....	39	118
3150 ELECTRIC LAMPS & LIGHTING EQUIPMENTS.....	6	12
3190 OTHER ELECTRICAL EQUIPMENT N.E.C.....	3	8
3210 ELECTRONIC VALVES & TUBES & OTHER ELECTRONIC COMPONENTS..	5	8
3230 TELEVISION & RADIO RECEIVERS, SOUND OR VIDEO RECORDING....	6	9
3420 BODIES (COACHWORK) FOR MOTOR VEHICLES.....	15	85
3430 PARTS & ACCESSORIES FOR MOTOR VEHICLES & THEIR ENGINES...	4	32
3592 BICYCLES & INVALID CARRIAGES.....	8	16
3610 FURNITURE.....	443	970
3691 JEWELLERY & RELATED ARTICLES.....	133	270
3692 MUSICAL INSTRUMENTS.....	30	83
3694 GAMES & TOYS.....	7	106
3699 OTHER MANUFACTURING N.E.C.....	130	3,658
9999 OTHER PRODUCT.....	24	2,090
TOTAL.....	10,988	55,602

* - MINING & QUARRYING AND MANUFACTURING

** - ISIC REVISION 03

TABLE 8: NO. OF ESTABLISHMENT* & PERSONS ENGAGED BY DIVISIONAL SECRETARY DIVISION & MAJOR INDUSTRY DIVISION** (ISIC 1 DIGIT LEVEL)
KANDY - RURAL SECTOR - 1995

D.S.DIVISION & MAJOR INDUSTRY DIVISION	NO. OF ESTABLISHMENTS	PERSONS ENGAGED
AKURAMA		
C MINING & QUARRYING.....	11	122
D MANUFACTURING.....	295	1,055
GANGA IHALA KORALE		
C MINING & QUARRYING.....	7	22
D MANUFACTURING.....	147	956
HARISPATTUWA		
C MINING & QUARRYING.....	117	488
D MANUFACTURING.....	995	2,846
KANDY POUR GRAVETS & GANGAWATA KORALE		
C MINING & QUARRYING.....	8	51
D MANUFACTURING.....	219	1,261
KUNDASALE		
C MINING & QUARRYING.....	117	520
D MANUFACTURING.....	938	6,469
MEDADUMBARA		
C MINING & QUARRYING.....	13	67
D MANUFACTURING.....	523	2,424
MIRIPE		
C MINING & QUARRYING.....	25	74
D MANUFACTURING.....	422	1,414
PANWILA		
C MINING & QUARRYING.....	5	14
D MANUFACTURING.....	127	1,982
PASBAGE KORALE (MAHALAPITIYA)		
C MINING & QUARRYING.....	22	92
D MANUFACTURING.....	137	1,069
PATHADUMBARA		
C MINING & QUARRYING.....	10	62
D MANUFACTURING.....	484	2,703
PATHANNAHETA		
C MINING & QUARRYING.....	40	562
D MANUFACTURING.....	539	4,156
POOJAPITIYA		
C MINING & QUARRYING.....	15	89
D MANUFACTURING.....	1,228	2,620
THUMPANE		
C MINING & QUARRYING.....	29	106
D MANUFACTURING.....	1,123	7,946
UDADUMBARA		
C MINING & QUARRYING.....	1	1
D MANUFACTURING.....	422	2,594
UDAPALATRA (GAMPOLA)		
C MINING & QUARRYING.....	30	234
D MANUFACTURING.....	587	2,058
UDUNWARA		
C MINING & QUARRYING.....	238	986
D MANUFACTURING.....	722	4,798
VELIGALLA		
C MINING & QUARRYING.....	111	434
D MANUFACTURING.....	361	1,109
YTIWUWARA		
C MINING & QUARRYING.....	25	460
D MANUFACTURING.....	895	3,758
TOTAL.....	10,988	55,602

* - MINING & QUARRYING AND MANUFACTURING

** - ISIC REVISION 03

TABLE 9: NO. OF ESTABLISHMENT* & PERSONS ENGAGED BY DIVISIONAL SECRETARY DIVISION & INDUSTRY DIVISION** (ISIC 2 DIGIT LEVEL)
KANDY DISTRICT - RURAL SECTOR - 1995

D.S. DIVISION & INDUSTRY DIVISION	NO. OF ESTABLISHMENTS	PERSONS ENGAGED
AKURANA		
14 OTHER MINING & QUARRYING.....	11	122
15 FOOD PRODUCTS & BEVERAGES.....	66	226
16 TOBACCO PRODUCTS.....	23	41
17 TEXTILES.....	6	12
18 WEARING APPAREL DRESSING & DYEING OF FUR.....	27	332
20 WOOD & WOOD PRODUCTS, EXCEPT FURNITURE.....	9	43
21 PAPER & PAPER PRODUCTS.....	3	4
24 CHEMICALS & CHEMICAL PRODUCTS.....	94	202
26 OTHER NON-METALIC MINERAL PRODUCTS.....	4	10
27 BASIC METAL INDUSTRIES.....	4	18
28 FABRICATED METAL PRODUCTS, EXCEPT MACHINERY & EQUIPMENT...	6	17
31 ELECTRICAL MACHINERY & APPARATUS N.B.C.....	4	9
36 MANU. OF FURNITURE, MANUFACTURING N.B.C.....	44	122
99 OTHER PRODUCT.....	3	19
GANGA INHALA KORALE		
14 OTHER MINING & QUARRYING.....	7	22
15 FOOD PRODUCTS & BEVERAGES.....	50	264
17 TEXTILES.....	10	20
18 WEARING APPAREL DRESSING & DYEING OF FUR.....	20	49
19 TRAINING & DRESSING OF LEATHER, LEATHER GOODS & FOOTWEAR.	3	102
20 WOOD & WOOD PRODUCTS, EXCEPT FURNITURE.....	34	57
21 PAPER & PAPER PRODUCTS.....	3	3
24 CHEMICALS & CHEMICAL PRODUCTS.....	3	399
26 OTHER NON-METALIC MINERAL PRODUCTS.....	4	21
28 FABRICATED METAL PRODUCTS, EXCEPT MACHINERY & EQUIPMENT...	17	36
36 MANU. OF FURNITURE, MANUFACTURING N.B.C.....	3	5
HARISPATTUWA		
14 OTHER MINING & QUARRYING.....	117	488
15 FOOD PRODUCTS & BEVERAGES.....	156	586
16 TOBACCO PRODUCTS.....	237	374
17 TEXTILES.....	69	451
18 WEARING APPAREL DRESSING & DYEING OF FUR.....	79	233
19 TRAINING & DRESSING OF LEATHER, LEATHER GOODS & FOOTWEAR.	8	24
20 WOOD & WOOD PRODUCTS, EXCEPT FURNITURE.....	142	529
21 PAPER & PAPER PRODUCTS.....	7	23
24 CHEMICALS & CHEMICAL PRODUCTS.....	162	302
25 RUBBER & PLASTICS PRODUCTS.....	5	6
26 OTHER NON-METALIC MINERAL PRODUCTS.....	26	66
27 BASIC METAL INDUSTRIES.....	10	20
28 FABRICATED METAL PRODUCTS, EXCEPT MACHINERY & EQUIPMENT...	32	70
29 MACHINERY & EQUIPMENT N.B.C.....	39	118
32 RADIO, TELEVISION & COMMUNICATION EQUIPMENT & APPARATUS....	5	7

(continued)

* - MINING & QUARRYING AND MANUFACTURING

** - ISIC REVISION 03

TABLE 9:NO.OF ESTABLISHMENT* & PERSONS ENGAGED BY DIVISIONAL SECRETARY DIVISION &
INDUSTRY DIVISION** (ISIC 2 DIGIT LEVEL)
KANDY DISTRICT - RURAL SECTOR - 1995

D.S.DIVISION & INDUSTRY DIVISION	NO.OF ESTABLISHMENTS	PERSONS ENGAGED
36 MANU.OF FURNITURE, MANUFACTURING N.B.C.....	12	24
99 OTHER PRODUCT.....	6	13
KANDY FOUR GRAVETS & GANGAWATA KORALE		
14 OTHER MINING & QUARRYING.....	8	51
15 FOOD PRODUCTS & BEVERAGES.....	54	171
16 TOBACCO PRODUCTS.....	3	8
17 TEXTILES.....	9	77
18 WEARING APPEREL DRESSING & DYEING OF FUR.....	40	484
20 WOOD & WOOD PRODUCTS, EXCEPT FURNITURE.....	10	23
21 PAPER & PAPER PRODUCTS.....	5	13
22 PUBLISHING,PRINTING & REPRODUCTION OF RECORDED MEDIA.....	4	15
24 CHEMICALS & CHEMICAL PRODUCTS.....	16	50
25 RUBBER & PLASTICS PRODUCTS.....	4	9
26 OTHER NON-METALIC MINERAL PRODUCTS.....	21	246
28 FABRICATED METAL PRODUCTS,EXCEPT MACHINERY & EQUIPMENT...	10	22
36 MANU.OF FURNITURE, MANUFACTURING N.B.C.....	36	110
99 OTHER PRODUCT.....	7	33
KUNDASALE		
14 OTHER MINING & QUARRYING.....	117	520
15 FOOD PRODUCTS & BEVERAGES.....	166	1,323
16 TOBACCO PRODUCTS.....	50	133
17 TEXTILES.....	137	833
18 WEARING APPEREL DRESSING & DYEING OF FUR.....	94	421
19 TRAINING & DRESSING OF LEATHER, LEATHER GOODS & FOOTWEAR.	15	43
20 WOOD & WOOD PRODUCTS, EXCEPT FURNITURE.....	121	430
21 PAPER & PAPER PRODUCTS.....	7	10
24 CHEMICALS & CHEMICAL PRODUCTS.....	21	133
25 RUBBER & PLASTICS PRODUCTS.....	8	174
26 OTHER NON-METALIC MINERAL PRODUCTS.....	150	613
27 BASIC METAL INDUSTRIES.....	10	49
28 FABRICATED METAL PRODUCTS,EXCEPT MACHINERY & EQUIPMENT...	61	129
34 MOTOR VEHICLES,TRAILERS & SEMI-TRAILERS.....	12	79
36 MANU.OF FURNITURE, MANUFACTURING N.B.C.....	81	2,077
99 OTHER PRODUCT.....	5	22
NEDADUMBARA		
14 OTHER MINING & QUARRYING.....	13	67
15 FOOD PRODUCTS & BEVERAGES.....	101	369
16 TOBACCO PRODUCTS.....	115	650
17 TEXTILES.....	28	97
18 WEARING APPEREL DRESSING & DYEING OF FUR.....	47	871

(continued)

* - MINING & QUARRYING AND MANUFACTURING

** - ISIC REVISION 03

TABLE 9: NO. OF ESTABLISHMENT* & PERSONS ENGAGED BY DIVISIONAL SECRETARY DIVISION & INDUSTRY DIVISION** (ISIC 2 DIGIT LEVEL)
KANDY DISTRICT - RURAL SECTOR - 1995

D.S. DIVISION & INDUSTRY DIVISION	NO. OF ESTABLISHMENTS	PERSONS ENGAGED
19 TRAINING & DRESSING OF LEATHER, LEATHER GOODS & FOOTWEAR.	12	31
20 WOOD & WOOD PRODUCTS, EXCEPT FURNITURE.....	98	189
24 CHEMICALS & CHEMICAL PRODUCTS.....	7	11
26 OTHER NON-METALIC MINERAL PRODUCTS.....	54	93
27 BASIC METAL INDUSTRIES.....	8	14
28 FABRICATED METAL PRODUCTS, EXCEPT MACHINERY & EQUIPMENT...	16	26
32 RADIO, TELEVISION & COMMUNICATION EQUIPMENT & APPARATUS....	3	4
36 MANU. OF FURNITURE, MANUFACTURING N.B.C.....	31	59
99 OTHER PRODUCT.....	3	10
MINIPE		
14 OTHER MINING & QUARRYING.....	25	74
15 FOOD PRODUCTS & BEVERAGES.....	180	390
17 TEXTILES.....	37	41
18 WEARING APPEREL DRESSING & DYEING OF FUR.....	35	654
20 WOOD & WOOD PRODUCTS, EXCEPT FURNITURE.....	58	90
26 OTHER NON-METALIC MINERAL PRODUCTS.....	76	173
27 BASIC METAL INDUSTRIES.....	13	23
28 FABRICATED METAL PRODUCTS, EXCEPT MACHINERY & EQUIPMENT...	12	21
35 OTHER TRANSPORT EQUIPMENT.....	11	22
PANWILA		
14 OTHER MINING & QUARRYING.....	5	14
15 FOOD PRODUCTS & BEVERAGES.....	31	294
17 TEXTILES.....	12	29
18 WEARING APPEREL DRESSING & DYEING OF FUR.....	25	718
20 WOOD & WOOD PRODUCTS, EXCEPT FURNITURE.....	19	29
28 FABRICATED METAL PRODUCTS, EXCEPT MACHINERY & EQUIPMENT...	21	29
36 MANU. OF FURNITURE, MANUFACTURING N.B.C.....	15	874
99 OTHER PRODUCT.....	4	9
PASBAGE KORALE (NAWALAPITIYA)		
14 OTHER MINING & QUARRYING.....	22	92
15 FOOD PRODUCTS & BEVERAGES.....	24	690
16 TOBACCO PRODUCTS.....	4	8
17 TEXTILES.....	9	122
18 WEARING APPEREL DRESSING & DYEING OF FUR.....	44	112
20 WOOD & WOOD PRODUCTS, EXCEPT FURNITURE.....	16	21
21 PAPER & PAPER PRODUCTS.....	6	10

(continued)

* - MINING & QUARRYING AND MANUFACTURING

** - ISIC REVISION 03

TABLE 9:NO.OF ESTABLISHMENT* & PERSONS ENGAGED BY DIVISIONAL SECRETARY DIVISION &
INDUSTRY DIVISION** (ISIC 2 DIGIT LEVEL)
KANDY DISTRICT - RURAL SECTOR - 1995

D.S.DIVISION & INDUSTRY DIVISION	NO.OF ESTABLISHMENTS	PERSONS ENGAGED
26 OTHER NON-METALIC MINERAL PRODUCTS.....	12	28
28 FABRICATED METAL PRODUCTS, EXCEPT MACHINERY & EQUIPMENT...	5	16
29 MACHINERY & EQUIPMENT N.E.C.....	4	12
36 MANU.OF FURNITURE, MANUFACTURING N.E.C.....	7	28
99 OTHER PRODUCT.....	6	17
FATHADUMBARA		
14 OTHER MINING & QUARRYING.....	10	62
15 FOOD PRODUCTS & BEVERAGES.....	71	212
16 TOBACCO PRODUCTS.....	13	21
17 TEXTILES.....	26	181
18 WEARING APPEREL DRESSING & DYEING OF FUR.....	19	1,024
19 TRAINING & DRESSING OF LEATHER, LEATHER GOODS & FOOTWEAR.	12	63
20 WOOD & WOOD PRODUCTS, EXCEPT FURNITURE.....	40	237
24 CHEMICALS & CHEMICAL PRODUCTS.....	99	129
26 OTHER NON-METALIC MINERAL PRODUCTS.....	101	624
27 BASIC METAL INDUSTRIES.....	5	9
28 FABRICATED METAL PRODUCTS, EXCEPT MACHINERY & EQUIPMENT...	34	65
36 MANU.OF FURNITURE, MANUFACTURING N.E.C.....	64	138
FATRANEWARATA		
14 OTHER MINING & QUARRYING.....	40	562
15 FOOD PRODUCTS & BEVERAGES.....	188	2,801
16 TOBACCO PRODUCTS.....	9	15
17 TEXTILES.....	23	583
18 WEARING APPEREL DRESSING & DYEING OF FUR.....	42	59
19 TRAINING & DRESSING OF LEATHER, LEATHER GOODS & FOOTWEAR.	8	25
20 WOOD & WOOD PRODUCTS, EXCEPT FURNITURE.....	75	151
21 PAPER & PAPER PRODUCTS.....	10	59
24 CHEMICALS & CHEMICAL PRODUCTS.....	19	44
25 RUBBER & PLASTICS PRODUCTS.....	5	46
26 OTHER NON-METALIC MINERAL PRODUCTS.....	22	62
27 BASIC METAL INDUSTRIES.....	18	37
28 FABRICATED METAL PRODUCTS, EXCEPT MACHINERY & EQUIPMENT...	49	95
36 MANU.OF FURNITURE, MANUFACTURING N.E.C.....	71	179
POOJAPITIYA		
14 OTHER MINING & QUARRYING.....	15	89
15 FOOD PRODUCTS & BEVERAGES.....	202	605
16 TOBACCO PRODUCTS.....	656	959

(continued)

* - MINING & QUARRYING AND MANUFACTURING

** - ISIC REVISION 03

TABLE 9: NO. OF ESTABLISHMENT* & PERSONS ENGAGED BY DIVISIONAL SECRETARY DIVISION & INDUSTRY DIVISION** (ISIC 2 DIGIT LEVEL)
KANDY DISTRICT - RURAL SECTOR - 1995

D.S. DIVISION & INDUSTRY DIVISION	NO. OF ESTABLISHMENTS	PERSONS ENGAGED
17 TEXTILES.....	49	135
18 WEARING APPAREL DRESSING & DYING OF FUR.....	100	212
19 TRAINING & DRESSING OF LEATHER, LEATHER GOODS & FOOTWEAR.	9	251
20 WOOD & WOOD PRODUCTS, EXCEPT FURNITURE.....	127	257
21 PAPER & PAPER PRODUCTS.....	5	10
22 PUBLISHING, PRINTING & REPRODUCTION OF RECORDED MEDIA.....	3	7
24 CHEMICALS & CHEMICAL PRODUCTS.....	16	32
25 RUBBER & PLASTICS PRODUCTS.....	3	4
26 OTHER NON-METALIC MINERAL PRODUCTS.....	17	53
28 FABRICATED METAL PRODUCTS, EXCEPT MACHINERY & EQUIPMENT...	10	22
36 MANU. OF FURNITURE, MANUFACTURING N.B.C.....	22	71
99 OTHER PRODUCT.....	1	2
THUNPANE		
14 OTHER MINING & QUARRYING.....	29	106
15 FOOD PRODUCTS & BEVERAGES.....	271	535
16 TOBACCO PRODUCTS.....	350	582
17 TEXTILES.....	22	120
18 WEARING APPAREL DRESSING & DYING OF FUR.....	65	668
19 TRAINING & DRESSING OF LEATHER, LEATHER GOODS & FOOTWEAR.	22	101
20 WOOD & WOOD PRODUCTS, EXCEPT FURNITURE.....	106	2,272
21 PAPER & PAPER PRODUCTS.....	4	10
22 PUBLISHING, PRINTING & REPRODUCTION OF RECORDED MEDIA.....	5	29
24 CHEMICALS & CHEMICAL PRODUCTS.....	9	16
25 RUBBER & PLASTICS PRODUCTS.....	137	267
26 OTHER NON-METALIC MINERAL PRODUCTS.....	39	109
28 FABRICATED METAL PRODUCTS, EXCEPT MACHINERY & EQUIPMENT...	32	1,081
36 MANU. OF FURNITURE, MANUFACTURING N.B.C.....	60	134
99 OTHER PRODUCT.....	1	2,022
UDADUMBARA		
15 FOOD PRODUCTS & BEVERAGES.....	90	168
16 TOBACCO PRODUCTS.....	281	1,797
17 TEXTILES.....	16	60
18 WEARING APPAREL DRESSING & DYING OF FUR.....	8	511
19 TRAINING & DRESSING OF LEATHER, LEATHER GOODS & FOOTWEAR.	7	22
20 WOOD & WOOD PRODUCTS, EXCEPT FURNITURE.....	8	14
28 FABRICATED METAL PRODUCTS, EXCEPT MACHINERY & EQUIPMENT...	11	19
99 OTHER PRODUCT.....	2	4
UDAPALAYHA (GANPOLA)		
14 OTHER MINING & QUARRYING.....	30	234
15 FOOD PRODUCTS & BEVERAGES.....	159	977
16 TOBACCO PRODUCTS.....	57	178
17 TEXTILES.....	44	133
18 WEARING APPAREL DRESSING & DYING OF FUR.....	83	161
19 TRAINING & DRESSING OF LEATHER, LEATHER GOODS & FOOTWEAR.	9	23
20 WOOD & WOOD PRODUCTS, EXCEPT FURNITURE.....	37	89

(continued)

* - MINING & QUARRYING AND MANUFACTURING

** - ISIC REVISION 03

TABLE 9: NO. OF ESTABLISHMENT* & PERSONS ENGAGED BY DIVISIONAL SECRETARY DIVISION & INDUSTRY DIVISION** (ISIC 2 DIGIT LEVEL)
KANDY DISTRICT - RURAL SECTOR - 1995

D.S. DIVISION & INDUSTRY DIVISION	NO. OF ESTABLISHMENTS	PERSONS ENGAGED
21 PAPER & PAPER PRODUCTS.....	10	13
24 CHEMICALS & CHEMICAL PRODUCTS.....	12	38
26 OTHER NON-METALIC MINERAL PRODUCTS.....	31	143
27 BASIC METAL INDUSTRIES.....	4	15
28 FABRICATED METAL PRODUCTS, EXCEPT MACHINERY & EQUIPMENT...	26	51
36 MANU. OF FURNITURE, MANUFACTURING N.E.C.....	110	218
99 OTHER PRODUCT.....	5	19
UDUNUWARA		
14 OTHER MINING & QUARRYING.....	238	986
15 FOOD PRODUCTS & BEVERAGES.....	136	384
16 TOBACCO PRODUCTS.....	25	31
17 TEXTILES.....	14	46
18 WEARING APPAREL DRESSING & DYEING OF FUR.....	20	320
19 TANNING & DRESSING OF LEATHER, LEATHER GOODS & FOOTWEAR.	11	33
20 WOOD & WOOD PRODUCTS, EXCEPT FURNITURE.....	91	218
21 PAPER & PAPER PRODUCTS.....	7	17
24 CHEMICALS & CHEMICAL PRODUCTS.....	9	22
25 RUBBER & PLASTICS PRODUCTS.....	3	42
26 OTHER NON-METALIC MINERAL PRODUCTS.....	9	12
28 FABRICATED METAL PRODUCTS, EXCEPT MACHINERY & EQUIPMENT...	325	3,556
36 MANU. OF FURNITURE, MANUFACTURING N.E.C.....	71	114
99 OTHER PRODUCT.....	1	3
VELIGALLA		
14 OTHER MINING & QUARRYING.....	111	434
15 FOOD PRODUCTS & BEVERAGES.....	90	237
16 TOBACCO PRODUCTS.....	16	24
17 TEXTILES.....	23	77
18 WEARING APPAREL DRESSING & DYEING OF FUR.....	20	37
20 WOOD & WOOD PRODUCTS, EXCEPT FURNITURE.....	17	55
21 PAPER & PAPER PRODUCTS.....	42	97
24 CHEMICALS & CHEMICAL PRODUCTS.....	14	36
26 OTHER NON-METALIC MINERAL PRODUCTS.....	18	107
28 FABRICATED METAL PRODUCTS, EXCEPT MACHINERY & EQUIPMENT...	22	55
36 MANU. OF FURNITURE, MANUFACTURING N.E.C.....	93	203
99 OTHER PRODUCT.....	6	181
YTINUWARA		
14 OTHER MINING & QUARRYING.....	25	460
15 FOOD PRODUCTS & BEVERAGES.....	204	593
16 TOBACCO PRODUCTS.....	83	153
17 TEXTILES.....	21	79

(continued)

* - MINING & QUARRYING AND MANUFACTURING

** - ISIC REVISION 03

TABLE 9: NO. OF ESTABLISHMENT* & PERSONS ENGAGED BY DIVISIONAL SECRETARY DIVISION &
INDUSTRY DIVISION** (ISIC 2 DIGIT LEVEL)
KANDY DISTRICT - RURAL SECTOR - 1995

D.S. DIVISION & INDUSTRY DIVISION	NO. OF ESTABLISHMENTS	PERSONS ENGAGED
18 WEAVING APPAREL DRESSING & DYEING OF FUR.....	71	359
19 TRAINING & DRESSING OF LEATHER, LEATHER GOODS & FOOTWEAR.	14	52
20 WOOD & WOOD PRODUCTS, EXCEPT FURNITURE.....	164	655
21 PAPER & PAPER PRODUCTS.....	7	21
24 CHEMICALS & CHEMICAL PRODUCTS.....	119	373
25 RUBBER & PLASTICS PRODUCTS.....	6	22
26 OTHER NON-METALIC MINERAL PRODUCTS.....	93	498
28 FABRICATED METAL PRODUCTS, EXCEPT MACHINERY & EQUIPMENT...	79	194
36 MANU. OF FURNITURE, MANUFACTURING N.B.C.....	23	731
99 OTHER PRODUCT.....	11	28
TOTAL.....	10,988	55,602

* - MINING & QUARRYING AND MANUFACTURING

** - ISIC REVISION 03

TABLE 10: DISTRIBUTION OF ESTABLISHMENT* & PERSONS ENGAGED BY DIVISIONAL
SECRETARY DIVISION & PERSONS ENGAGED SIZE CLASS
KANDY DISTRICT - RURAL SECTOR - 1995

D.S. DIVISION & INDUSTRY DIVISION	NO. OF ESTABLISHMENTS
AKURANA	
14 OTHER MINING & QUARRYING	
1 - 4.....	2
5 - 14.....	6
15 & ABOVE.....	3
15 FOOD PRODUCTS & BEVERAGES	
1 - 4.....	60
5 - 14.....	4
15 & ABOVE.....	2
16 TOBACCO PRODUCTS	
1 - 4.....	22
15 & ABOVE.....	1
17 TEXTILES	
1 - 4.....	6
18 WEARING APPEREL DRESSING & DYING OF FUR	
1 - 4.....	20
5 - 14.....	6
15 & ABOVE.....	1
19 TRAINING & DRESSING OF LEATHER, LEATHER GOODS & FOOTWEAR	
1 - 4.....	1
5 - 14.....	1
20 WOOD & WOOD PRODUCTS, EXCEPT FURNITURE	
1 - 4.....	4
5 - 14.....	5
21 PAPER & PAPER PRODUCTS	
1 - 4.....	3
24 CHEMICALS & CHEMICAL PRODUCTS	
1 - 4.....	89
5 - 14.....	4
15 & ABOVE.....	1
26 OTHER NON-METALIC MINERAL PRODUCTS	
1 - 4.....	4
27 BASIC METAL INDUSTRIES	
1 - 4.....	2
5 - 14.....	2
28 FABRICATED METAL PRODUCTS, EXCEPT MACHINERY & EQUIPMENT	
1 - 4.....	8
31 ELECTRICAL MACHINERY & APPARATUS N.B.C.	
1 - 4.....	4
36 MANU. OF FURNITURE, MANUFACTURING N.B.C.	
1 - 4.....	35
5 - 14.....	9
99 OTHER PRODUCT	
5 - 14.....	1
GANGA IHALA KORALE	
14 OTHER MINING & QUARRYING	
1 - 4.....	7

(continued)

* - MINING & QUARRYING AND MANUFACTURING

TABLE 10: DISTRIBUTION OF ESTABLISHMENT* & PERSONS ENGAGED BY DIVISIONAL SECRETARY DIVISION & PERSONS ENGAGED SIZE CLASS
KANDY DISTRICT - RURAL SECTOR - 1995

D.S.DIVISION & INDUSTRY DIVISION	NO.OF ESTABLISHMENTS
15 FOOD PRODUCTS & BEVERAGES	
1 - 4.....	40
5 - 14.....	2
15 & ABOVE.....	8
17 TEXTILES	
1 - 4.....	9
5 - 14.....	1
18 WEARING APPEREL DRESSING & DYEING OF FUR	
1 - 4.....	16
5 - 14.....	4
19 TRAINING & DRESSING OF LEATHER, LEATHER GOODS & FOOTWEAR	
1 - 4.....	1
15 & ABOVE.....	2
20 WOOD & WOOD PRODUCTS, EXCEPT FURNITURE	
1 - 4.....	33
5 - 14.....	1
21 PAPER & PAPER PRODUCTS	
1 - 4.....	3
24 CHEMICALS & CHEMICAL PRODUCTS	
1 - 4.....	2
15 & ABOVE.....	1
26 OTHER NON-METALIC MINERAL PRODUCTS	
1 - 4.....	3
15 & ABOVE.....	1
28 FABRICATED METAL PRODUCTS, EXCEPT MACHINERY & EQUIPMENT	
1 - 4.....	15
5 - 14.....	2
36 MANU.OF FURNITURE, MANUFACTURING N.E.C.	
1 - 4.....	3
HARISPATTUWA	
14 OTHER MINING & QUARRYING	
1 - 4.....	73
5 - 14.....	42
15 & ABOVE.....	2
15 FOOD PRODUCTS & BEVERAGES	
1 - 4.....	131
5 - 14.....	18
15 & ABOVE.....	7
16 TOBACCO PRODUCTS	
1 - 4.....	228
5 - 14.....	6
15 & ABOVE.....	3
17 TEXTILES	
1 - 4.....	62
5 - 14.....	5
15 & ABOVE.....	2

(continued)

* - MINING & QUARRYING AND MANUFACTURING

**TABLE 10: DISTRIBUTION OF ESTABLISHMENT* & PERSONS ENGAGED BY DIVISIONAL SECRETARY DIVISION & PERSONS ENGAGED SIZE CLASS
KANDY DISTRICT - RURAL SECTOR - 1995**

D.S.DIVISION & INDUSTRY DIVISION	NO.OF ESTABLISHMENTS
18 WEARING APPEREL DRESSING & DYEING OF FUR	
1 - 4.....	72
5 - 14.....	4
15 & ABOVE.....	3
19 TRAINING & DRESSING OF LEATHER, LEATHER GOODS & FOOTWEAR	
1 - 4.....	7
5 - 14.....	1
20 WOOD & WOOD PRODUCTS, EXCEPT FURNITURE	
1 - 4.....	112
5 - 14.....	27
15 & ABOVE.....	3
21 PAPER & PAPER PRODUCTS	
1 - 4.....	5
5 - 14.....	2
22 PUBLISHING, PRINTING & REPRODUCTION OF RECORDED MEDIA	
1 - 4.....	1
24 CHEMICALS & CHEMICAL PRODUCTS	
1 - 4.....	151
5 - 14.....	10
15 & ABOVE.....	1
25 RUBBER & PLASTICS PRODUCTS	
1 - 4.....	5
26 OTHER NON-METALIC MINERAL PRODUCTS	
1 - 4.....	22
5 - 14.....	4
27 BASIC METAL INDUSTRIES	
1 - 4.....	9
5 - 14.....	1
28 FABRICATED METAL PRODUCTS, EXCEPT MACHINERY & EQUIPMENT	
1 - 4.....	28
5 - 14.....	4
29 MACHINERY & EQUIPMENT N.E.C.	
1 - 4.....	33
5 - 14.....	6
32 RADIO, TELEVISION & COMMUNICATION EQUIPMENT & APPARATUS	
1 - 4.....	5
34 MOTOR VEHICLES, TRAILERS & SEMI-TRAILERS	
5 - 14.....	1
36 MANU. OF FURNITURE, MANUFACTURING N.E.C.	
1 - 4.....	11
5 - 14.....	1
99 OTHER PRODUCT	
1 - 4.....	4
KANDY FOUR GRAVETS & GANGAWATA KORALE	
14 OTHER MINING & QUARRYING	
1 - 4.....	4
5 - 14.....	3
15 & ABOVE.....	1

(continued)

* - MINING & QUARRYING AND MANUFACTURING

TABLE 10: DISTRIBUTION OF ESTABLISHMENT* & PERSONS ENGAGED BY DIVISIONAL
SECRETARY DIVISION & PERSONS ENGAGED SIZE CLASS
KANDY DISTRICT - RURAL SECTOR - 1995

D.S.DIVISION & INDUSTRY DIVISION	NO.OF ESTABLISHMENTS
15 FOOD PRODUCTS & BEVERAGES	
1 - 4.....	45
5 - 14.....	7
15 & ABOVE.....	2
16 TOBACCO PRODUCTS	
1 - 4.....	2
5 - 14.....	1
17 TEXTILES	
1 - 4.....	5
5 - 14.....	2
15 & ABOVE.....	2
18 WEARING APPAREL DRESSING & DYEING OF FUR	
1 - 4.....	33
5 - 14.....	3
15 & ABOVE.....	4
19 TRAINING & DRESSING OF LEATHER, LEATHER GOODS & FOOTWEAR	
1 - 4.....	1
20 WOOD & WOOD PRODUCTS, EXCEPT FURNITURE	
1 - 4.....	8
5 - 14.....	2
21 PAPER & PAPER PRODUCTS	
1 - 4.....	5
22 PUBLISHING, PRINTING & REPRODUCTION OF RECORDED MEDIA	
1 - 4.....	3
5 - 14.....	1
24 CHEMICALS & CHEMICAL PRODUCTS	
1 - 4.....	15
15 & ABOVE.....	1
25 RUBBER & PLASTICS PRODUCTS	
1 - 4.....	3
5 - 14.....	1
26 OTHER NON-METALIC MINERAL PRODUCTS	
1 - 4.....	16
5 - 14.....	3
15 & ABOVE.....	2
28 FABRICATED METAL PRODUCTS, EXCEPT MACHINERY & EQUIPMENT	
1 - 4.....	8
5 - 14.....	2
29 MACHINERY & EQUIPMENT N.E.C.	
1 - 4.....	1
31 ELECTRICAL MACHINERY & APPARATUS N.E.C.	
1 - 4.....	1
34 MOTOR VEHICLES, TRAILERS & SEMI-TRAILERS	
5 - 14.....	1

(continued)

* - MINING & QUARRYING AND MANUFACTURING

TABLE 10: DISTRIBUTION OF ESTABLISHMENT* & PERSONS ENGAGED BY DIVISIONAL
SECRETARY DIVISION & PERSONS ENGAGED SIZE CLASS
KANDY DISTRICT - RURAL SECTOR - 1995

D.S.DIVISION & INDUSTRY DIVISION	NO.OF ESTABLISHMENTS
36 MANU.OF FURNITURE, MANUFACTURING N.B.C.	
1 - 4.....	34
5 - 14.....	1
15 & ABOVE.....	1
99 OTHER PRODUCT	
1 - 4.....	1
5 - 14.....	2
KUNDASALE	
14 OTHER MINING & QUARRYING	
1 - 4.....	76
5 - 14.....	38
15 & ABOVE.....	3
15 FOOD PRODUCTS & BEVERAGES	
1 - 4.....	145
5 - 14.....	14
15 & ABOVE.....	7
16 TOBACCO PRODUCTS	
1 - 4.....	48
15 & ABOVE.....	2
17 TEXTILES	
1 - 4.....	121
5 - 14.....	9
15 & ABOVE.....	7
18 WEARING APPEREL DRESSING & DYEING OF FUR	
1 - 4.....	89
5 - 14.....	1
15 & ABOVE.....	4
19 TRAINING & DRESSING OF LEATHER, LEATHER GOODS & FOOTWEAR	
1 - 4.....	11
5 - 14.....	4
20 WOOD & WOOD PRODUCTS, EXCEPT FURNITURE	
1 - 4.....	109
5 - 14.....	8
15 & ABOVE.....	4
21 PAPER & PAPER PRODUCTS	
1 - 4.....	7
22 PUBLISHING, PRINTING & REPRODUCTION OF RECORDED MEDIA	
1 - 4.....	1
24 CHEMICALS & CHEMICAL PRODUCTS	
1 - 4.....	15
5 - 14.....	3
15 & ABOVE.....	3
25 RUBBER & PLASTICS PRODUCTS	
1 - 4.....	4
5 - 14.....	2
15 & ABOVE.....	2

(continued)

* - MINING & QUARRYING AND MANUFACTURING

TABLE 10: DISTRIBUTION OF ESTABLISHMENT* & PERSONS ENGAGED BY DIVISIONAL
SECRETARY DIVISION & PERSONS ENGAGED SIZE CLASS
KANDY DISTRICT - RURAL SECTOR - 1995

D.S.DIVISION & INDUSTRY DIVISION	NO.OF ESTABLISHMENTS
26 OTHER NON-METALIC MINERAL PRODUCTS	
1 - 4.....	115
5 - 14.....	28
15 & ABOVE.....	7
27 BASIC METAL INDUSTRIES	
1 - 4.....	9
15 & ABOVE.....	1
28 FABRICATED METAL PRODUCTS, EXCEPT MACHINERY & EQUIPMENT	
1 - 4.....	58
5 - 14.....	3
29 MACHINERY & EQUIPMENT N.B.C.	
5 - 14.....	1
34 MOTOR VEHICLES, TRAILERS & SEMI-TRAILERS	
1 - 4.....	7
5 - 14.....	4
15 & ABOVE.....	1
36 MANU.OF FURNITURE, MANUFACTURING N.B.C.	
1 - 4.....	75
5 - 14.....	3
15 & ABOVE.....	3
99 OTHER PRODUCT	
1 - 4.....	2
5 - 14.....	1
NEEDADUMBARA	
14 OTHER MINING & QUARRYING	
1 - 4.....	7
5 - 14.....	5
15 & ABOVE.....	1
15 FOOD PRODUCTS & BEVERAGES	
1 - 4.....	91
5 - 14.....	7
15 & ABOVE.....	3
16 TOBACCO PRODUCTS	
1 - 4.....	61
5 - 14.....	44
15 & ABOVE.....	10
17 TEXTILES	
1 - 4.....	23
5 - 14.....	4
15 & ABOVE.....	1
18 WEARING APPEREL DRESSING & DYING OF FUR	
1 - 4.....	43
5 - 14.....	2
15 & ABOVE.....	2
19 TRAINING & DRESSING OF LEATHER, LEATHER GOODS & FOOTWEAR	
1 - 4.....	11
5 - 14.....	1

(continued)

* - MINING & QUARRYING AND MANUFACTURING

TABLE 10: DISTRIBUTION OF ESTABLISHMENTS* & PERSONS ENGAGED BY DIVISIONAL
SECRETARY DIVISION & PERSONS ENGAGED SIZE CLASS
KANDY DISTRICT - RURAL SECTOR - 1995

D.S.DIVISION & INDUSTRY DIVISION	NO.OF ESTABLISHMENTS
20 WOOD & WOOD PRODUCTS, EXCEPT FURNITURE	
1 - 4.....	92
5 - 14.....	5
15 & ABOVE.....	1
21 PAPER & PAPER PRODUCTS	
5 - 14.....	1
24 CHEMICALS & CHEMICAL PRODUCTS	
1 - 4.....	7
25 RUBBER & PLASTICS PRODUCTS	
1 - 4.....	1
26 OTHER NON-METALIC MINERAL PRODUCTS	
1 - 4.....	52
5 - 14.....	2
27 BASIC METAL INDUSTRIES	
1 - 4.....	8
28 FABRICATED METAL PRODUCTS, EXCEPT MACHINERY & EQUIPMENT	
1 - 4.....	16
32 RADIO, TELEVISION & COMMUNICATION EQUIPMENT & APPARATUS	
1 - 4.....	3
36 MANU.OF FURNITURE, MANUFACTURING N.B.C.	
1 - 4.....	29
5 - 14.....	2
99 OTHER PRODUCT	
1 - 4.....	1
MINING	
14 OTHER MINING & QUARRYING	
1 - 4.....	23
5 - 14.....	1
15 & ABOVE.....	1
15 FOOD PRODUCTS & BEVERAGES	
1 - 4.....	168
5 - 14.....	10
15 & ABOVE.....	1
16 TOBACCO PRODUCTS	
1 - 4.....	1
17 TEXTILES	
1 - 4.....	37
18 WEARING APPAREL DRESSING & DYEING OF FUR	
1 - 4.....	28
5 - 14.....	3
15 & ABOVE.....	3
19 TANNING & DRESSING OF LEATHER, LEATHER GOODS & FOOTWEAR	
5 - 14.....	1
20 WOOD & WOOD PRODUCTS, EXCEPT FURNITURE	
1 - 4.....	57
5 - 14.....	1

(continued)

* - MINING & QUARRYING AND MANUFACTURING

TABLE 10: DISTRIBUTION OF ESTABLISHMENT* & PERSONS ENGAGED BY DIVISIONAL
SECRETARY DIVISION & PERSONS ENGAGED SIZE CLASS
KANDY DISTRICT - RURAL SECTOR - 1995

D.S. DIVISION & INDUSTRY DIVISION	NO. OF ESTABLISHMENTS
22 PUBLISHING, PRINTING & REPRODUCTION OF RECORDED MEDIA	
1 - 4.....	1
26 OTHER NON-METALIC MINERAL PRODUCTS	
1 - 4.....	70
5 - 14.....	5
27 BASIC METAL INDUSTRIES	
1 - 4.....	13
28 FABRICATED METAL PRODUCTS, EXCEPT MACHINERY & EQUIPMENT	
1 - 4.....	12
34 MOTOR VEHICLES, TRAILERS & SEMI-TRAILERS	
1 - 4.....	2
35 OTHER TRANSPORT EQUIPMENT	
1 - 4.....	7
5 - 14.....	1
36 MANU. OF FURNITURE, MANUFACTURING N.B.C.	
1 - 4.....	1
PANWILA	
14 OTHER MINING & QUARRYING	
1 - 4.....	5
15 FOOD PRODUCTS & BEVERAGES	
1 - 4.....	24
15 & ABOVE.....	7
16 TOBACCO PRODUCTS	
1 - 4.....	2
17 TEXTILES	
1 - 4.....	10
5 - 14.....	2
18 WEAVING APPREEL DRESSING & DYEING OF FUR	
1 - 4.....	24
15 & ABOVE.....	1
20 WOOD & WOOD PRODUCTS, EXCEPT FURNITURE	
1 - 4.....	19
24 CHEMICALS & CHEMICAL PRODUCTS	
5 - 14.....	1
28 FABRICATED METAL PRODUCTS, EXCEPT MACHINERY & EQUIPMENT	
1 - 4.....	21
36 MANU. OF FURNITURE, MANUFACTURING N.B.C.	
1 - 4.....	14
15 & ABOVE.....	1
99 OTHER PRODUCT	
1 - 4.....	1
PASBAGE KORALE (NAWALAPITIYA)	
14 OTHER MINING & QUARRYING	
1 - 4.....	20
5 - 14.....	1
15 & ABOVE.....	1

(continued)

* - MINING & QUARRYING AND MANUFACTURING

TABLE 10: DISTRIBUTION OF ESTABLISHMENT* & PERSONS ENGAGED BY DIVISIONAL
SECRETARY DIVISION & PERSONS ENGAGED SIZE CLASS
KANDY DISTRICT - RURAL SECTOR - 1995

D.S.DIVISION & INDUSTRY DIVISION	NO.OF ESTABLISHMENTS
15 FOOD PRODUCTS & BEVERAGES	
1 - 4.....	18
5 - 14.....	1
15 & ABOVE.....	5
16 TOBACCO PRODUCTS	
1 - 4.....	4
17 TEXTILES	
1 - 4.....	5
5 - 14.....	3
15 & ABOVE.....	1
18 WEARING APPEREL DRESSING & DYING OF FUR	
1 - 4.....	42
5 - 14.....	1
15 & ABOVE.....	1
19 TRAINING & DRESSING OF LEATHER, LEATHER GOODS & FOOTWEAR	
1 - 4.....	1
5 - 14.....	1
20 WOOD & WOOD PRODUCTS, EXCEPT FURNITURE	
1 - 4.....	16
21 PAPER & PAPER PRODUCTS	
1 - 4.....	6
24 CHEMICALS & CHEMICAL PRODUCTS	
1 - 4.....	1
26 OTHER NON-METALIC MINERAL PRODUCTS	
1 - 4.....	11
5 - 14.....	1
27 BASIC METAL INDUSTRIES	
5 - 14.....	1
28 FABRICATED METAL PRODUCTS, EXCEPT MACHINERY & EQUIPMENT	
1 - 4.....	5
29 MACHINERY & EQUIPMENT N.B.C.	
1 - 4.....	3
5 - 14.....	1
31 ELECTRICAL MACHINERY & APPARATUS N.B.C.	
1 - 4.....	1
36 MANU.OF FURNITURE, MANUFACTURING N.B.C.	
1 - 4.....	5
5 - 14.....	2
99 OTHER PRODUCT	
1 - 4.....	1
PATHADUNBARA	
14 OTHER MINING & QUARRYING	
1 - 4.....	3
5 - 14.....	7
15 FOOD PRODUCTS & BEVERAGES	
1 - 4.....	61
5 - 14.....	8
15 & ABOVE.....	2

(continued)

* - MINING & QUARRYING AND MANUFACTURING

TABLE 10: DISTRIBUTION OF ESTABLISHMENTS* & PERSONS ENGAGED BY DIVISIONAL SECRETARY DIVISION & PERSONS ENGAGED SIZE CLASS
KANDY DISTRICT - RURAL SECTOR - 1995

D.S.DIVISION & INDUSTRY DIVISION	NO.OF ESTABLISHMENTS
31 ELECTRICAL MACHINERY & APPARATUS N.B.C.	
1 - 4.....	1
36 MANU.OF FURNITURE, MANUFACTURING N.B.C.	
1 - 4.....	63
5 - 14.....	7
15 & ABOVE.....	1
POOJAPITIYA	
14 OTHER MINING & QUARRYING	
1 - 4.....	9
5 - 14.....	4
15 & ABOVE.....	2
15 FOOD PRODUCTS & BEVERAGES	
1 - 4.....	181
5 - 14.....	15
15 & ABOVE.....	6
16 TOBACCO PRODUCTS	
1 - 4.....	641
5 - 14.....	11
15 & ABOVE.....	4
17 TEXTILES	
1 - 4.....	42
5 - 14.....	4
15 & ABOVE.....	3
18 WEARING APPEREL DRESSING & DYING OF FUR	
1 - 4.....	92
5 - 14.....	6
15 & ABOVE.....	2
19 TRAINING & DRESSING OF LEATHER, LEATHER GOODS & FOOTWEAR	
1 - 4.....	5
5 - 14.....	2
15 & ABOVE.....	2
20 WOOD & WOOD PRODUCTS, EXCEPT FURNITURE	
1 - 4.....	117
5 - 14.....	9
15 & ABOVE.....	1
21 PAPER & PAPER PRODUCTS	
1 - 4.....	4
5 - 14.....	1
22 PUBLISHING, PRINTING & REPRODUCTION OF RECORDED MEDIA	
1 - 4.....	3
24 CHEMICALS & CHEMICAL PRODUCTS	
1 - 4.....	15
5 - 14.....	1
25 RUBBER & PLASTICS PRODUCTS	
1 - 4.....	3
26 OTHER NON-METALIC MINERAL PRODUCTS	
1 - 4.....	13
5 - 14.....	4

(continued)

* - MINING & QUARRYING AND MANUFACTURING

TABLE 10: DISTRIBUTION OF ESTABLISHMENT* & PERSONS ENGAGED BY DIVISIONAL
SECRETARY DIVISION & PERSONS ENGAGED SIZE CLASS
KANDY DISTRICT - RURAL SECTOR - 1995

D.S. DIVISION & INDUSTRY DIVISION	NO. OF ESTABLISHMENTS
28 FABRICATED METAL PRODUCTS, EXCEPT MACHINERY & EQUIPMENT	
1 - 4.....	18
36 MANU. OF FURNITURE, MANUFACTURING N.B.C.	
1 - 4.....	18
5 - 14.....	3
15 & ABOVE.....	1
99 OTHER PRODUCT	
1 - 4.....	1
THUMPANE	
14 OTHER MINING & QUARRYING	
1 - 4.....	23
5 - 14.....	6
15 FOOD PRODUCTS & BEVERAGES	
1 - 4.....	258
5 - 14.....	11
15 & ABOVE.....	2
16 TOBACCO PRODUCTS	
1 - 4.....	337
5 - 14.....	9
15 & ABOVE.....	4
17 TEXTILES	
1 - 4.....	16
5 - 14.....	4
15 & ABOVE.....	2
18 WEARING APPEREL DRESSING & DYING OF FUR	
1 - 4.....	60
5 - 14.....	3
15 & ABOVE.....	2
19 TRAINING & DRESSING OF LEATHER, LEATHER GOODS & FOOTWEAR	
1 - 4.....	15
5 - 14.....	6
15 & ABOVE.....	1
20 WOOD & WOOD PRODUCTS, EXCEPT FURNITURE	
1 - 4.....	93
5 - 14.....	12
15 & ABOVE.....	1
21 PAPER & PAPER PRODUCTS	
1 - 4.....	4
22 PUBLISHING, PRINTING & REPRODUCTION OF RECORDED MEDIA	
1 - 4.....	3
5 - 14.....	1
15 & ABOVE.....	1
24 CHEMICALS & CHEMICAL PRODUCTS	
1 - 4.....	9
25 RUBBER & PLASTICS PRODUCTS	
1 - 4.....	128
5 - 14.....	8
15 & ABOVE.....	1

(continued)

* - MINING & QUARRYING AND MANUFACTURING

TABLE 10: DISTRIBUTION OF ESTABLISHMENT* & PERSONS ENGAGED BY DIVISIONAL
SECRETARY DIVISION & PERSONS ENGAGED SIZE CLASS
KANDY DISTRICT - RURAL SECTOR - 1995

D.S.DIVISION & INDUSTRY DIVISION	NO.OF ESTABLISHMENTS
26 OTHER NON-METALIC MINERAL PRODUCTS	
1 - 4.....	36
5 - 14.....	3
28 FABRICATED METAL PRODUCTS, EXCEPT MACHINERY & EQUIPMENT	
1 - 4.....	31
15 & ABOVE.....	1
36 MANU.OF FURNITURE, MANUFACTURING M.E.C.	
1 - 4.....	58
5 - 14.....	1
15 & ABOVE.....	1
99 OTHER PRODUCT	
15 & ABOVE.....	1
UDADUMBARA	
14 OTHER MINING & QUARRYING	
1 - 4.....	1
15 FOOD PRODUCTS & BEVERAGES	
1 - 4.....	84
5 - 14.....	6
16 TOBACCO PRODUCTS	
1 - 4.....	126
5 - 14.....	138
15 & ABOVE.....	17
17 TEXTILES	
1 - 4.....	10
5 - 14.....	6
18 WEARING APPAREL DRESSING & DYING OF FUR	
1 - 4.....	7
15 & ABOVE.....	1
19 TRAINING & DRESSING OF LEATHER, LEATHER GOODS & FOOTWEAR	
1 - 4.....	6
5 - 14.....	1
20 WOOD & WOOD PRODUCTS, EXCEPT FURNITURE	
1 - 4.....	7
5 - 14.....	1
28 FABRICATED METAL PRODUCTS, EXCEPT MACHINERY & EQUIPMENT	
1 - 4.....	11
99 OTHER PRODUCT	
1 - 4.....	1
UDAPALATHA (GAMPOLA)	
14 OTHER MINING & QUARRYING	
1 - 4.....	5
5 - 14.....	22
15 & ABOVE.....	3
15 FOOD PRODUCTS & BEVERAGES	
1 - 4.....	132
5 - 14.....	9
15 & ABOVE.....	18

(continued)

* - MINING & QUARRYING AND MANUFACTURING

**TABLE 10: DISTRIBUTION OF ESTABLISHMENT* & PERSONS ENGAGED BY DIVISIONAL
SECRETARY DIVISION & PERSONS ENGAGED SIZE CLASS
KANDY DISTRICT - RURAL SECTOR - 1995**

D.S. DIVISION & INDUSTRY DIVISION	NO. OF ESTABLISHMENTS
16 TOBACCO PRODUCTS	
1 - 4.....	54
5 - 14.....	1
15 & ABOVE.....	2
17 TEXTILES	
1 - 4.....	35
5 - 14.....	7
15 & ABOVE.....	2
18 WEARING APPEREL DRESSING & DYING OF FUR	
1 - 4.....	78
5 - 14.....	4
15 & ABOVE.....	1
19 TRAINING & DRESSING OF LEATHER, LEATHER GOODS & FOOTWEAR	
1 - 4.....	8
5 - 14.....	1
20 WOOD & WOOD PRODUCTS, EXCEPT FURNITURE	
1 - 4.....	32
5 - 14.....	5
21 PAPER & PAPER PRODUCTS	
1 - 4.....	10
24 CHEMICALS & CHEMICAL PRODUCTS	
1 - 4.....	10
5 - 14.....	1
15 & ABOVE.....	1
25 RUBBER & PLASTICS PRODUCTS	
1 - 4.....	2
26 OTHER NON-METALIC MINERAL PRODUCTS	
1 - 4.....	21
5 - 14.....	8
15 & ABOVE.....	2
27 BASIC METAL INDUSTRIES	
1 - 4.....	3
5 - 14.....	1
28 FABRICATED METAL PRODUCTS, EXCEPT MACHINERY & EQUIPMENT	
1 - 4.....	25
5 - 14.....	1
29 MACHINERY & EQUIPMENT N.E.C.	
1 - 4.....	1
34 MOTOR VEHICLES, TRAILERS & SEMI-TRAILERS	
5 - 14.....	1
36 MANU. OF FURNITURE, MANUFACTURING N.E.C.	
1 - 4.....	104
5 - 14.....	3
15 & ABOVE.....	3
99 OTHER PRODUCT	
1 - 4.....	1

(continued)

* - MINING & QUARRYING AND MANUFACTURING

TABLE 10: DISTRIBUTION OF ESTABLISHMENT* & PERSONS ENGAGED BY DIVISIONAL SECRETARY DIVISION & PERSONS ENGAGED SIZE CLASS
KANDY DISTRICT - RURAL SECTOR - 1995

D.S.DIVISION & INDUSTRY DIVISION	NO.OF ESTABLISHMENTS
UDUNUWARA	
14 OTHER MINING & QUARRYING	
1 - 4.....	169
5 - 14.....	65
15 & ABOVE.....	4
15 FOOD PRODUCTS & BEVERAGES	
1 - 4.....	121
5 - 14.....	10
15 & ABOVE.....	5
16 TOBACCO PRODUCTS	
1 - 4.....	25
17 TEXTILES	
1 - 4.....	12
5 - 14.....	1
15 & ABOVE.....	1
18 WEARING APPEREL DRESSING & DYING OF FUR	
1 - 4.....	10
5 - 14.....	1
15 & ABOVE.....	1
19 TRAINING & DRESSING OF LEATHER, LEATHER GOODS & FOOTWEAR	
1 - 4.....	8
5 - 14.....	3
20 WOOD & WOOD PRODUCTS, EXCEPT FURNITURE	
1 - 4.....	81
5 - 14.....	10
21 PAPER & PAPER PRODUCTS	
1 - 4.....	7
24 CHEMICALS & CHEMICAL PRODUCTS	
1 - 4.....	8
5 - 14.....	1
25 RUBBER & PLASTICS PRODUCTS	
1 - 4.....	1
5 - 14.....	1
15 & ABOVE.....	1
26 OTHER NON-METALIC MINERAL PRODUCTS	
1 - 4.....	9
28 FABRICATED METAL PRODUCTS, EXCEPT MACHINERY & EQUIPMENT	
1 - 4.....	309
5 - 14.....	15
15 & ABOVE.....	1
36 MANU.OF FURNITURE, MANUFACTURING N.B.C.	
1 - 4.....	69
5 - 14.....	2
99 OTHER PRODUCT	
1 - 4.....	1

(continued)

* - MINING & QUARRYING AND MANUFACTURING

**TABLE 10: DISTRIBUTION OF ESTABLISHMENT* & PERSONS ENGAGED BY DIVISIONAL
SECRETARY DIVISION & PERSONS ENGAGED SIZE CLASS
KANDY DISTRICT - RURAL SECTOR - 1995**

D.S.DIVISION & INDUSTRY DIVISION	NO. OF ESTABLISHMENTS
VELIGALLA	
14 OTHER MINING & QUARRYING	
1 - 4.....	66
5 - 14.....	45
15 FOOD PRODUCTS & BEVERAGES	
1 - 4.....	77
5 - 14.....	11
15 & ABOVE.....	2
16 TOBACCO PRODUCTS	
1 - 4.....	15
5 - 14.....	1
17 TEXTILES	
1 - 4.....	16
5 - 14.....	7
18 WEARING APPEREL DRESSING & DYEING OF FUR	
1 - 4.....	19
5 - 14.....	1
19 TRAINING & DRESSING OF LEATHER, LEATHER GOODS & FOOTWEAR	
1 - 4.....	1
20 WOOD & WOOD PRODUCTS, EXCEPT FURNITURE	
1 - 4.....	12
5 - 14.....	5
21 PAPER & PAPER PRODUCTS	
1 - 4.....	38
5 - 14.....	3
15 & ABOVE.....	1
24 CHEMICALS & CHEMICAL PRODUCTS	
1 - 4.....	11
5 - 14.....	3
25 RUBBER & PLASTICS PRODUCTS	
1 - 4.....	1
26 OTHER NON-METALIC MINERAL PRODUCTS	
1 - 4.....	8
5 - 14.....	10
28 FABRICATED METAL PRODUCTS, EXCEPT MACHINERY & EQUIPMENT	
1 - 4.....	20
5 - 14.....	1
15 & ABOVE.....	1
29 MACHINERY & EQUIPMENT N.B.C.	
1 - 4.....	1
15 & ABOVE.....	1
36 MANU. OF FURNITURE, MANUFACTURING N.B.C.	
1 - 4.....	92
5 - 14.....	1
99 OTHER PRODUCT	
1 - 4.....	2

(continued)

* - MINING & QUARRYING AND MANUFACTURING

TABLE 10: DISTRIBUTION OF ESTABLISHMENT* & PERSONS ENGAGED BY DIVISIONAL SECRETARY DIVISION & PERSONS ENGAGED SIZE CLASS
KANDY DISTRICT - RURAL SECTOR - 1995

D.S.DIVISION & INDUSTRY DIVISION	NO.OF ESTABLISHMENTS
YTINUWARA	
14 OTHER MINING & QUARRYING	
1 - 4.....	7
5 - 14.....	11
15 & ABOVE.....	7
15 FOOD PRODUCTS & BEVERAGES	
1 - 4.....	188
5 - 14.....	11
15 & ABOVE.....	5
16 TOBACCO PRODUCTS	
1 - 4.....	79
5 - 14.....	2
15 & ABOVE.....	2
17 TEXTILES	
1 - 4.....	17
5 - 14.....	3
15 & ABOVE.....	1
18 WEARING APPEREL DRESSING & DYING OF FUR	
1 - 4.....	65
5 - 14.....	4
15 & ABOVE.....	2
19 TRAINING & DRESSING OF LEATHER, LEATHER GOODS & FOOTWEAR	
1 - 4.....	11
5 - 14.....	2
15 & ABOVE.....	1
20 WOOD & WOOD PRODUCTS, EXCEPT FURNITURE	
1 - 4.....	139
5 - 14.....	20
15 & ABOVE.....	5
21 PAPER & PAPER PRODUCTS	
1 - 4.....	6
5 - 14.....	1
22 PUBLISHING, PRINTING & REPRODUCTION OF RECORDED MEDIA	
1 - 4.....	2
24 CHEMICALS & CHEMICAL PRODUCTS	
1 - 4.....	103
5 - 14.....	14
15 & ABOVE.....	2
25 RUBBER & PLASTICS PRODUCTS	
1 - 4.....	4
5 - 14.....	2
26 OTHER NON-METALIC MINERAL PRODUCTS	
1 - 4.....	65
5 - 14.....	26
15 & ABOVE.....	2

(continued)

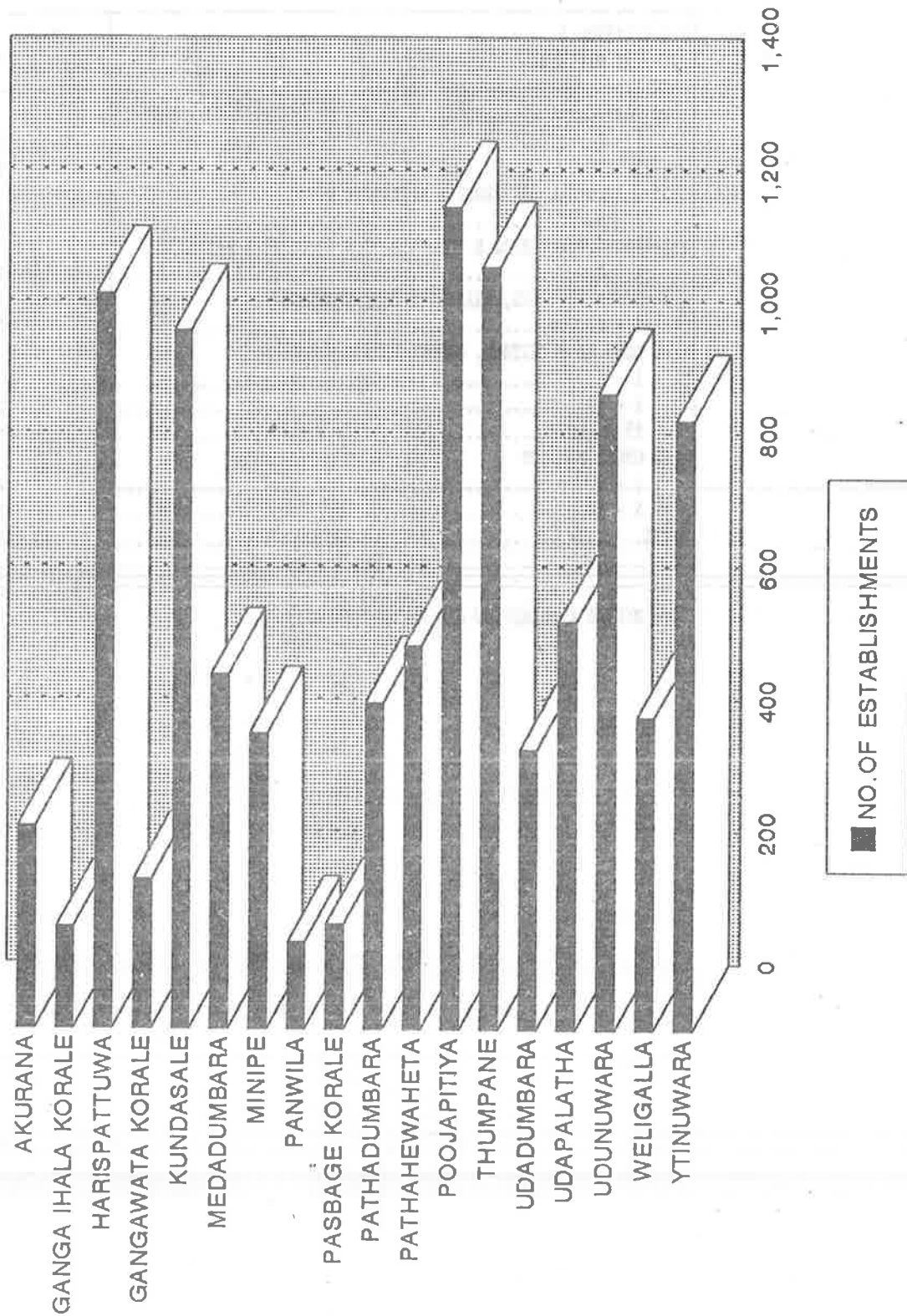
* - MINING & QUARRYING AND MANUFACTURING

**TABLE 10: DISTRIBUTION OF ESTABLISHMENT* & PERSONS ENGAGED BY DIVISIONAL SECRETARY DIVISION & PERSONS ENGAGED SIZE CLASS
KANDY DISTRICT - RURAL SECTOR - 1995**

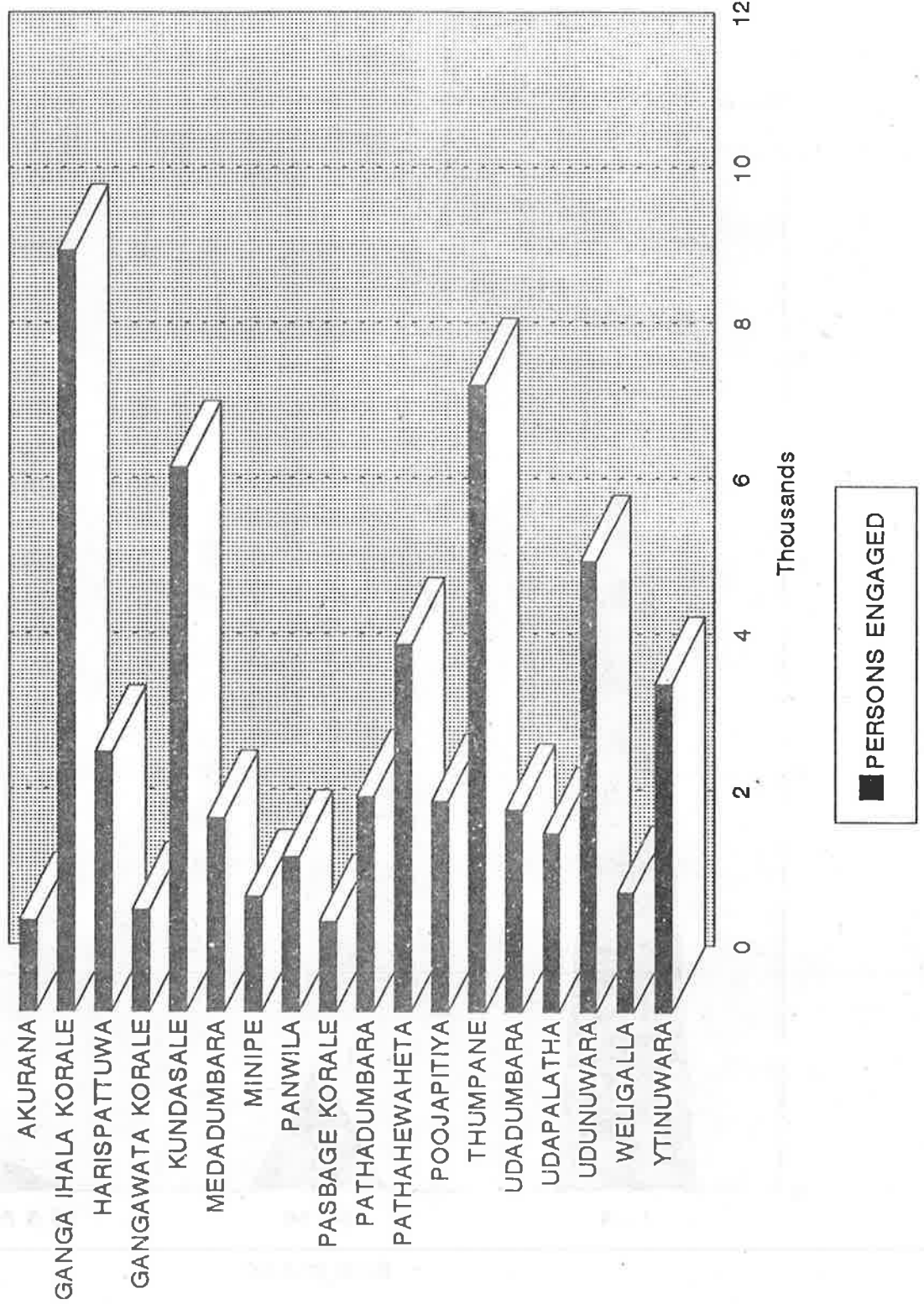
D.S.DIVISION & INDUSTRY DIVISION	NO.OF ESTABLISHMENTS
20 FABRICATED METAL PRODUCTS, EXCEPT MACHINERY & EQUIPMENT	
1 - 4.....	72
5 - 14.....	7
31 ELECTRICAL MACHINERY & APPARATUS N.E.C.	
1 - 4.....	2
32 RADIO, TELEVISION & COMMUNICATION EQUIPMENT & APPARATUS	
1 - 4.....	2
34 MOTOR VEHICLES, TRAILERS & SEMI-TRAILERS	
1 - 4.....	2
36 MANU.OF FURNITURE, MANUFACTURING N.E.C.	
1 - 4.....	17
5 - 14.....	2
15 & ABOVE.....	4
99 OTHER PRODUCT	
1 - 4.....	2
5 - 14.....	1
TOTAL.....	10,988

* - MINING & QUARRYING AND MANUFACTURING

NO.OF ESTABLISHMENTS BY D.S.DIVISION
RURAL SECTOR - 1995
KANDY DISTRICT



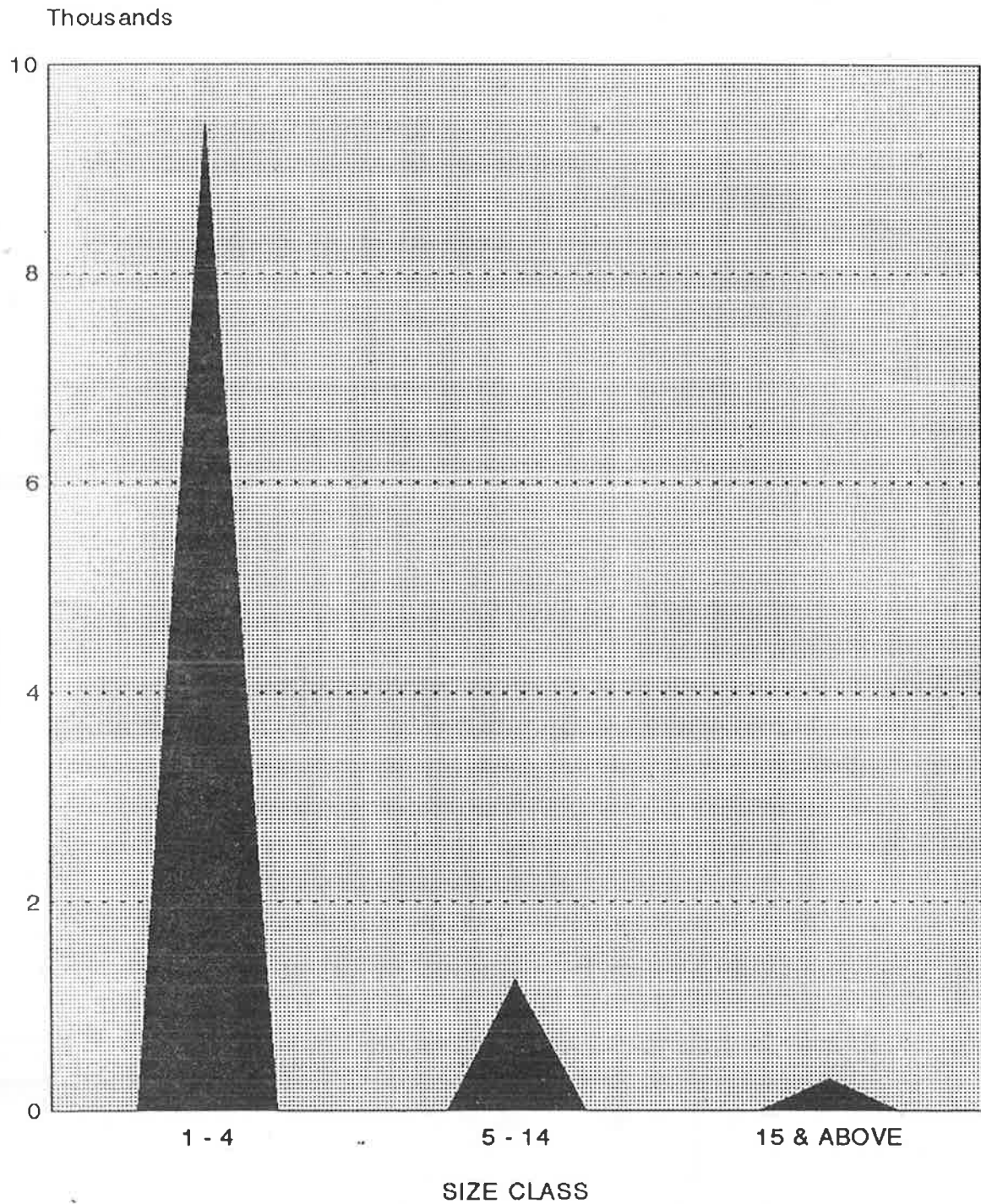
PERSONS ENGAGED BY D.S.DIVISION RURAL SECTOR - 1995 KANDY DISTRICT



NO.OF ESTABLISHMENT BY PERSONS ENGAGED SIZE CLASS

RURAL SECTOR - 1995

KANDY DISTRICT

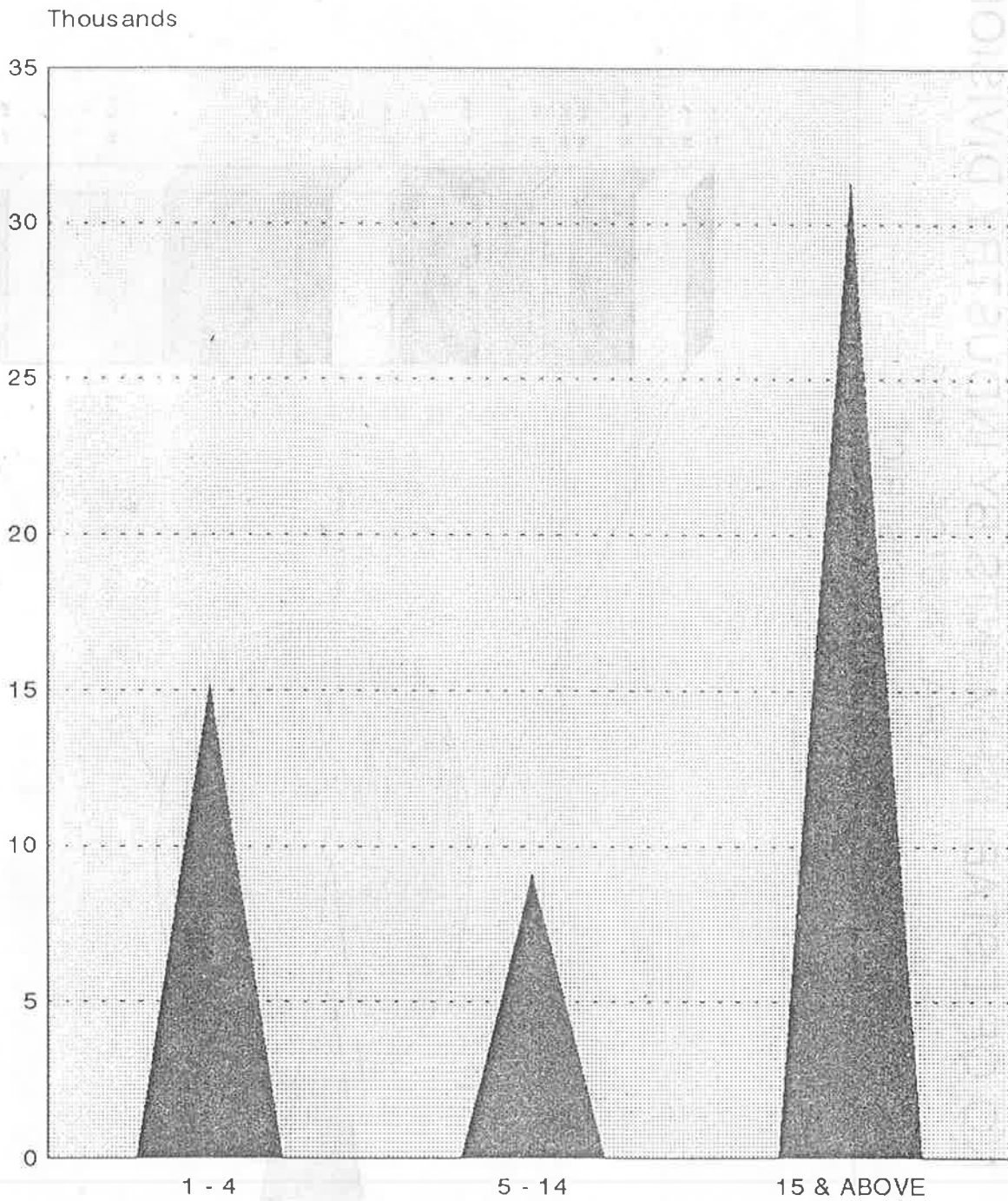


▲ NO.OF ESTABLISHMENTS

PERSONS ENGAGED BY SIZE CLASS

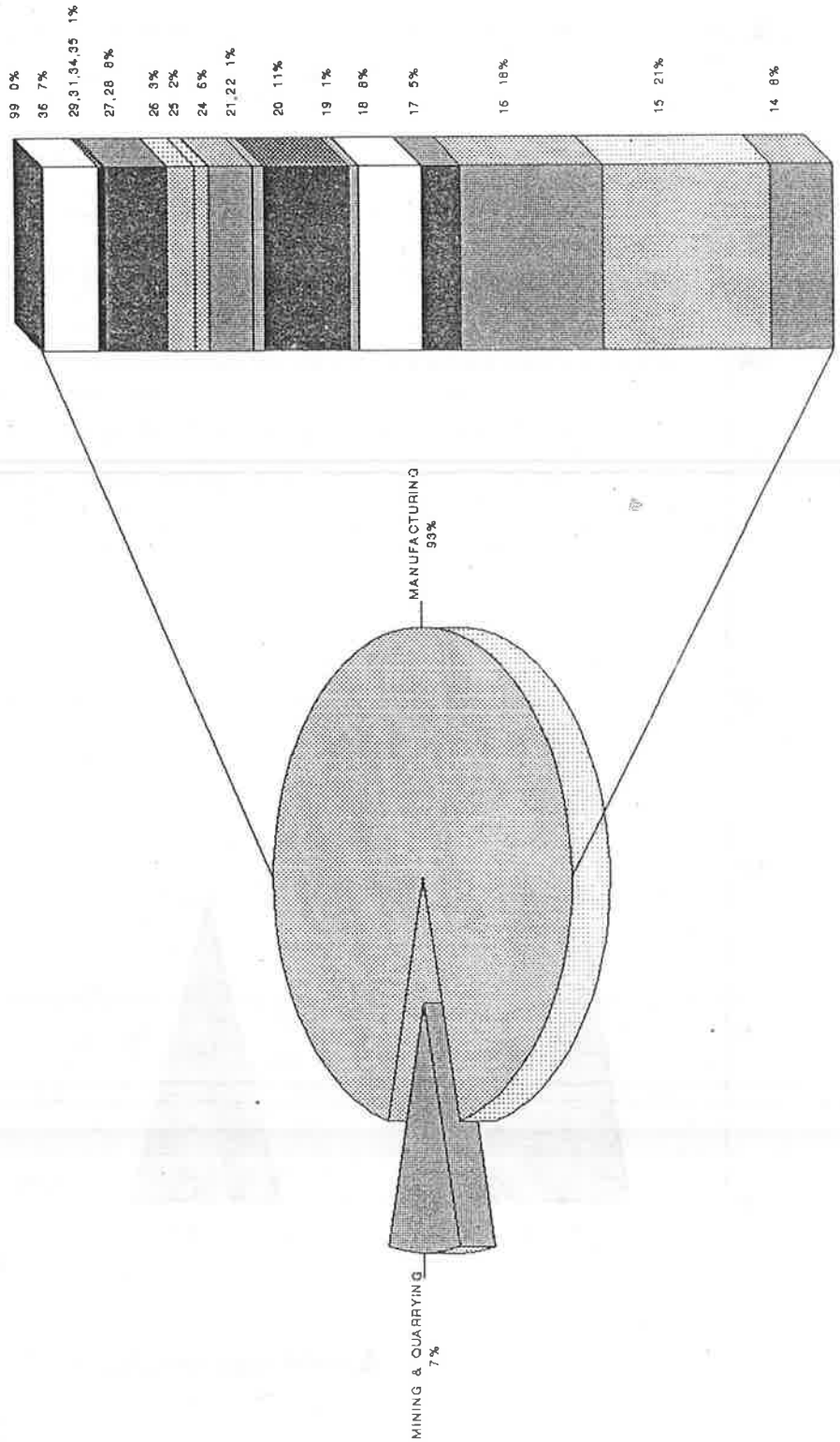
RURAL SECTOR - 1995

KANDY DISTRICT



▲ PERSONS ENGAGED

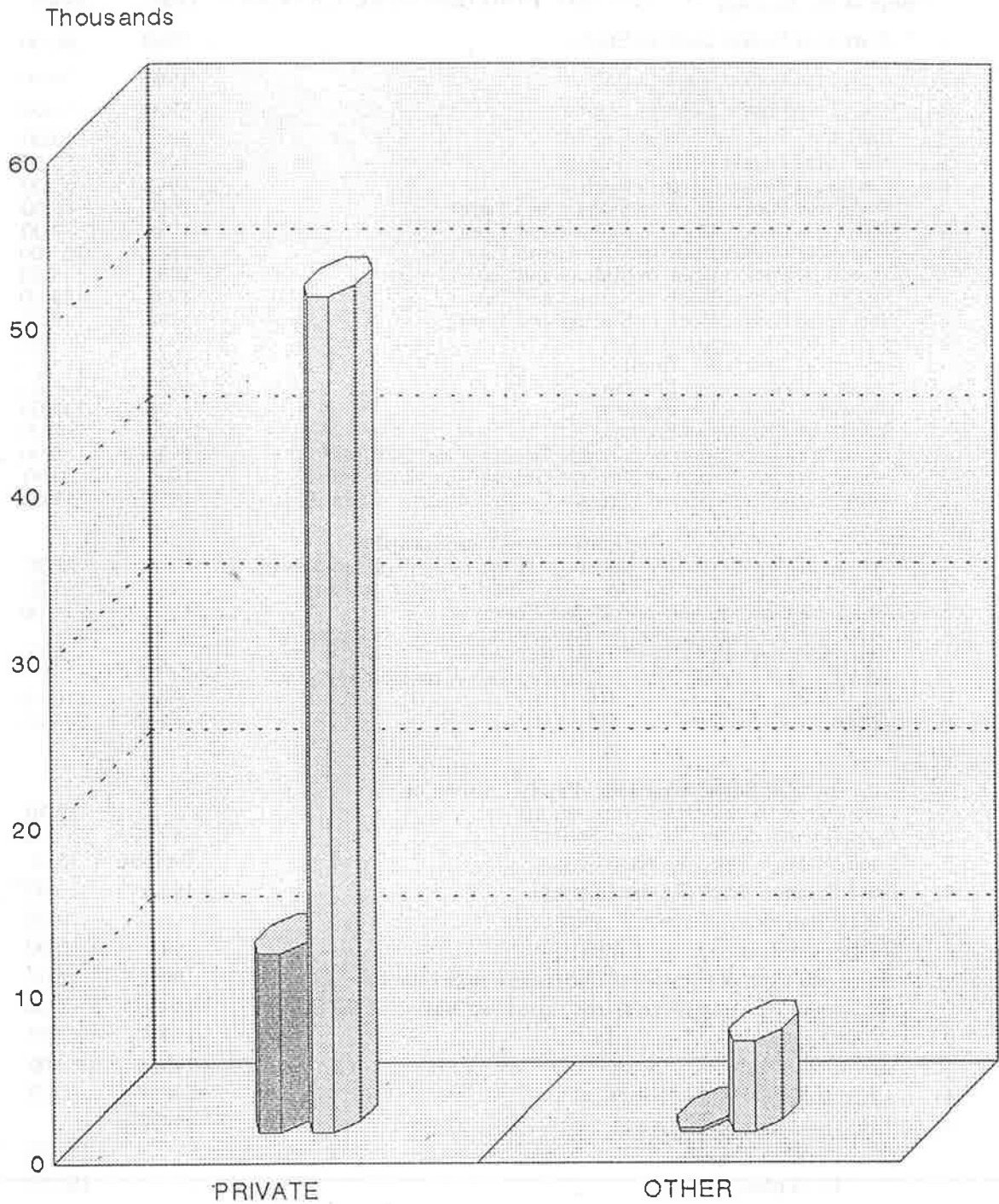
NO.OF ESTABLISHMENTS BY INDUSTRY DIVISION
RURAL SECTOR - 1995
KANDY DISTRICT



NO.OF ESTABLISHMENT & PERSONS ENGAGED BY TYPE OF SECTOR

RURAL SECTOR - 1995

KANDY DISTRICT



■ NO.OF ESTABLISHMENT ■ PERSONS ENGAGED

**PUBLICATIONS OF THE
DEPARTMENT OF CENSUS AND STATISTICS
AVAILABLE FOR SALES**

**AT
THE SAMPLE SURVEY DIVISION,
DEPARTMENT OF CENSUS AND STATISTICS,
16/7, ALBERT CRESCENT, COLOMBO 07.
Telephone 695962 - Ext. 17.**

Name of Publication	** GENERAL PURPOSE PUBLICATION *	Year	Price
1.	Statistical Pocket Book in English	1988	46.00
2.	Statistical Pocket Book in English	1990	39.00
3.	Statistical Pocket Book in English	1994	50.00
4.	Statistical Pocket Book in English	1995	50.00
5.	Statistical Pocket Book in English	1997	52.50
6.	Statistical Pocket Book in English	1998	53.00
7.	Statistical Pocket Book in Sinhala and Tamil	1987	46.00
8.	Statistical Pocket Book in Sinhala and Tamil	1988	79.00
9.	Statistical Pocket Book in Sinhala and Tamil	1990	161.00
10.	Statistical Pocket Book in Sinhala and Tamil	1991	175.00
11.	Statistical Pocket Book in Sinhala and Tamil	1993	189.00
12.	Statistical Pocket Book in Sinhala and Tamil	1994	119.00
13.	Statistical Abstract in English	1989	203.00
14.	Statistical Abstract in English	1992	285.00
15.	Statistical Abstract in English	1993	300.00
16.	Statistical Abstract in English	1996	248.00
17.	Statistical Abstract in English	1997	210.00
18.	Administration Report of Director General Census & Statistics	1995	50.00
19.	Administration Report of Director General Census & Statistics	1996	50.00
20.	Administration Report of Director General Census & Statistics	1997	53.00
Population and Demography			
1.	Census of Population and Housing - (Physically disabled person)	1981	20.00
2.	Census of Population and Housing - District Report (each)	1981	50.00
3.	Sri Lanka Demographic and Health Survey	1993	310.00
4.	Demographic Survey 1994 Sri Lanka (Report on Demographic Characteristics of the Population) Release 3	1994	124.00
5.	Demographic Survey 1994 Sri Lanka (Report on Demographic and Housing Characteristics) Release 4	1994	110.00
6.	Grama Niladhari Divisions of Sri Lanka	1996	295.00
Agriculture			
1.	Estimation of Sown Area under Paddy Cultivation (Alternative to complete enumeration)		19.50
2.	Food Balance Sheet (Revised Series)	1991/95	33.00
3.	Food Balance Sheet (Revised Series)	1992/96	35.00
4.	Food Balance Sheet (Revised Series)	1992/97	39.00
5.	Paddy Statistics (Seasonal Report) each		20.00
6.	Rubber Cultivation in Sri Lanka	1993	40.00
7.	States and Role of Cinnamon Cultivation in Sri Lanka	1993	70.00
8.	Cardamon "The Queen of spices" and Distribution in Sri Lanka	1993	68.00
9.	Rambutan Cultivation in Sri Lanka	1993	43.00
10.	Sowing and Harvesting periods of Paddy Cultivation in Sri Lanka	1994	80.00
11.	Agricultural Statistics of Sri Lanka	1995	97.00
12.	Paddy Statistics of Sri Lanka	1952/96	
	a) With diskette		241.00
	b) Without diskette		191.00

13. Agricultural crops and Livestock survey (Preliminary Reports)		
1.	Badulla	1992/93 80.00
2.	Colombo	1992/93 56.50
3.	Galle	1992/93 70.00
4.	Hambantota	1992/93 75.00
5.	Kalutara	1992/93 78.00
6.	Kegalle	1992/93 56.00
7.	Kurunegala	1992/93 160.00
8.	Matara	1992/93 61.00
9.	Moneragala	1992/93 53.00
10.	Ratnapura	1992/93 85.00
11.	Mahaweli System 'H'	1993/94 40.00
12.	Puttalam	1993/94 71.00
13.	Polonnaruwa	1993/94 44.00
14.	Anuradhapura	1993/94 90.50

Trade and Industry

1.	Annual Survey of Industries	1991	30.00
2.	Annual Survey of Industries	1992/93/94 (each)	37.00
3.	Annual Survey of Industries	1995/96/97 (each)	39.00
4.	Annual survey of Industries (Interim Report)	1996	28.00
5.	Annual survey of construction Industries	1993/94	64.00

National Accounts

1.	National Accounts of Sri Lanka	1993	102.00
2.	National Accounts of Sri Lanka	1994	111.00
3.	National Accounts of Sri Lanka (Sinhala)	1994	123.00
4.	National Accounts of Sri Lanka (Sinhala)	1995	143.00
5.	National Accounts of Sri Lanka	1996	150.00
6.	National Accounts of Sri Lanka	1997	165.00

Prices and Wages

1.	Bulletin of Selected Retail Prices	1975/90	62.50
2.	Bulletin of Selected Retail Prices	1975/91	60.00
3.	Bulletin of Selected Retail Prices	1975/92	77.00
4.	Bulletin of Selected Retail Prices	1995	127.00
5.	Bulletin of Selected Retail Prices	1996	124.00
6.	Weekly Retail Prices - (Colombo City)		
	i. Bulletin No. II	1991/92	30.00
	ii. Bulletin No. III	1992/93	25.00
	iii. Bulletin No. IV	1993/94	43.50
	iv. Bulletin No. V	1995	38.00
	v. Bulletin No. VI	1996	43.00

Survey Report

1.	Quarterly Report of the Sri Lanka Labour Force Survey		
	i. Quarterly Report each	1993	40.00
	ii. Quarterly Report each	1994	45.00
	iii. 1st Quarter	1995	55.00
	iv. 2nd Quarter	1995	65.00
	v. 3rd and 4th Quarter each	1995	64.00
	vi. Quarterly Report (each)	1996	64.00
	vii. Quarterly Report (each)	1997	69.00
	viii. 1st Quarter	1998	70.00
2.	Sri Lanka Labour Force Survey (Sinhala)	1992	50.00
3.	Provincial Profile of Labour Force Sri Lanka	1993	122.00
4.	Provincial Profile of Labour Force Sri Lanka	1996	73.00

Other Reports

1.	Women and Men in Sri Lanka (Tamil)		133.00
2.	Changing Role of Women in Sri Lanka (English)		200.00
3.	Statistical Data Sheets 1996 (Sinhala, Tamil, English) (each)		5.00
4.	Listing of Non-agricultural Economic Activities (Rural Sector)	1995	29.00

ISBN 955 - 577 - 250 - 9

Printed by Department of Census & Statistics.