



SRI LANKA

**LISTING OF NON - AGRICULTURAL**

**ECONOMIC ACTIVITIES**

**1995**

**Rural Sector**

**District Report**

**Monaragala District**

*department of census and statistics  
ministry of finance and planning*





**LISTING OF NON - AGRICULTURAL  
ECONOMIC ACTIVITIES  
1995**

**Rural Sector**

**District Report**

**Monaragala District**

உள்ளூர் அமைதி - மனித உரிமைகள்

மேற்கண்ட நூல்கள்  
இருக்கின்றன

மேற்கண்ட நூல்கள்

ISBN 955 - 577 - 261 - 4

மேற்கண்ட நூல்கள்

மேற்கண்ட நூல்கள்

Published in 2000

பிரிப்புகள்

## PREFACE

The Department of Census and Statistics carried out a comprehensive listing of Non Agricultural Economic Activities in 1995 and covered rural areas of all provinces except Northern and Eastern provinces.

This report which includes basic Industrial statistics in the rural sector of the Monaragala District is prepared to serve the immediate needs of the Grama Niladhari Division and Divisional Secretariat Divisional level data users. It is planned to publish the similar reports for all relevent Districts and the all island report.

I hope that the information presented in this document, though it is provisional will be of immense use to planners and policy makers.



A.G.W. Nanayakkara.  
Director General.  
Dept.of Census & Statistics,  
No. 15/12,  
Maitland Crescent,  
Colombo 07.  
27th. July 1999.

## ACKNOWLEDGEMENT

The listing operation of Non- Agricultural Economic Activities was undertaken by the Department of Census & Statistics which was funded by Institute of Construction Training and Development (ICTAD). This operation was planned mainly to establish a frame of building material industries and to ascertain the out put of the construction sector.

The planning, execution and successful completion of the entire listing operation were performed by the staff of Industry and Construction Division of the Department.

Enumerators who did the listing operation at the Grama Niladhari Division level, Statistical Investigators who were responsible for data collection and the District Statisticians / Statistical Officers who cordinated the activity are acknowledged.

The staff of the Data Processing Division and Statistical Investigators attached to some District offices who were engaged in computer data entry activities are much appreciated.

Special thanks are due to District Secretary and Divisional Secretaries of the District whose fullest co-operation was very vital to the successful completion of this operation.

Preparation of this publication was done by Mr. D.S.S.Gunawardana Statistical Officer using Apple Mackintosh and the statistical tables were obtained by Mr. R.D.N. Premawansa Statistical Investigator using SPSS PC+.

Acknowledgements are also due to Mr. K. D. Siripala, Deputy Director and his staff for printing this report within a short period.

The co-operation given by the respondents is also much appreciated.

## CONTENTS

	PAGE
1. PREFACE	
2. ACKNOWLEDGEMENT	
3. CONTENTS	
A. INTRODUCTION	1
B. COVERAGE	1
C. LISTING OPERATION	2
D. PREPARATION OF TABLES	2
4. TABLES	5 - 13
5. CHARTS	19 - 24
6. ANNEX	25

## Table Nos:

1. No. of Establishments & persons engaged by Divisional Secretary Division 1995.	5
2. No. of Establishments & persons engaged by Divisional Secretary Division & by Sector 1995.	5
3. No. of Establishments & persons engaged by Divisional Secretary Division & by Size Class 1995.	6
4. No. of Establishments & persons engaged by Major Industry Division ( ISIC 1 digit level ) 1995.	6
5. No. of Establishments & persons engaged by Industry Division. ( ISIC 2 digit level ) 1995.	7
6. No. of Establishments & persons engaged by Major Industry Group ( ISIC 3 digit level ) 1995.	7
7. No. of Establishments & persons engaged by Industry Group ( ISIC 4 digit level ) 1995.	8

<b>Table Nos:</b>	<b>Page</b>
8. No. of Establishments & persons engaged by Divisional Secretary Division & Major Industry Division ( ISIC 1 digit level ) 1995.	9
9. No. of Establishments & persons engaged by Divisional Secretary Division & Industry Division ( ISIC 2 digit level ) 1995.	10
10. Distribution of Establishments & persons engaged by Divisional Secretary Division & persons engaged size class 1995.	13

**Chart Nos:**

1. No. of Establishments by Divisional Secretary Division 1995.	19
2. Persons engaged by Divisional Secretary Division 1995.	20
3. No. of Establishments by persons engaged size class 1995.	21
4. Persons engaged by size class 1995.	22
5. No. of Establishments by Industry Division 1995.	23
6. No. of Establishments & persons engaged by Type of Sector 1995.	24



## **Listing of Non Agricultural Economic Activities - 1995**

### **A. Introduction**

Listing of Non Agricultural Economic Activities was conducted in stage is in Rural Sector covering all districts except the districts in Northern & Eastern Provinces. The main objective of this exercise was to identify the building material producing units and to compile the value of construction output of the housing sector as required by ICTAD. However, in order to make the exercise complete all non agricultural activities were enumerated.

A Grama Niladhari ( GN ) Division or a part of GN Division was considered as an enumeration area and enumerators were appointed by the Divisional Secretary of the area. The enumerator prepared a list of non agricultural economic activities by visiting each and every building in the enumeration area under the supervision of District Statistical Staff and the Head Office Staff.

### **B. Coverage**

#### **i. Economic Activities**

The following Economic Activities were covered by the listing of non-agricultural economic activities.

1. Mining and Quarrying
2. Manufacturing
3. Electricity, Gas production & Water supply
4. Trade, Hotels and restaurants
5. Transport, Communication & Storage
6. Finance, Insurance, Real estate and business services
7. Public Administration, Education & Health activities
8. Community and Social Service & Private service activities
9. Construction

#### **ii Area**

This listing operation covered only the rural sector in Sri Lanka and did not cover:

1. Northern and Eastern Provinces
2. All Municipal Councils and Urban Councils
3. Areas covered by the Board of Investment

### **C. Listing Operation**

The recruited enumerators were given a two days training by panel of trainers selected and trained for that purpose in advance. An enumerator is assigned to each enumeration area which is usually a GN Division . When the GN Division is spread over a larger area or has a large number of housing units / buildings, the GN Division is divided into two enumeration areas.

The enumerators were asked to complete one line in the listing form (L) for each housing unit / building with the following information.

1. Name of the owner proprietor of the enterprise/chief occupant
2. Postal address
3. Nature of the unit
4. Type of Economic activity
5. Type of construction activity
6. Numbe of residents

If the housing unit/building was having the activities on

1. Mining and quarrying
2. Manufacturing
3. Electricity, Gas and Water

The following further information is inserted to the L1 form.

1. Economic Organization of the Establishment
2. Type of ownership of the establishment
3. Type of Industry
4. Major Products produced by the establishment
5. Persons engaged in the industry

Further if the housing units/building had done some construction activities during the reference period that too were included in an another form called L 3 with the following additional information.

1. Type of the Construction Activity done during the period from January to June in 1995
2. Expenditure/Estimated expenditure incurred during the period
3. Source of funds

#### **D. Preparation of Tables**

The information collected by the enumerators through L1 form was checked for completeness and data coded by the range Statistical Investigator under the supervision of the District Statistician/Statistical Officer. When two major products were given for an establishment, but products were coded using the information available in column 6 & 7. However the code for the 1st product is considered as the code relevant for the whole establishment in the tabulation procedure.

In most of the districts, data entry was done at the District Office itself using the personal computers available there. However L1 forms relevant to few districts were fed to the computer by the Data Processing Division of the Department.

The tabulation was done by the Industry and Construction Division using the SPSS PC+ package. The tables consist number of establishments and the persons engaged by Divisional Secretary Division and ISIC two digit level (Revision 3) in one set and ISIC 4 digit level (Revision 03) at district level in the other set. In cases when it is felt that the individual identification is disclosed, the information is either combined with another category or suppressed.

செய்து கொடுக்கப்பட்டுள்ளது. இந்த புத்தகம் மட்டும் அல்லாமல், இதன் மூலம் பெறப்பட்ட பணம் மூலமாகவும், பிற சமூக நல நிகழ்ச்சிகளில் பங்கேற்கும் வகையில் பயன்படுத்தப்படும். இந்த புத்தகம் மட்டும் அல்லாமல், இதன் மூலம் பெறப்பட்ட பணம் மூலமாகவும், பிற சமூக நல நிகழ்ச்சிகளில் பங்கேற்கும் வகையில் பயன்படுத்தப்படும்.

இந்த புத்தகம் மட்டும் அல்லாமல், இதன் மூலம் பெறப்பட்ட பணம் மூலமாகவும், பிற சமூக நல நிகழ்ச்சிகளில் பங்கேற்கும் வகையில் பயன்படுத்தப்படும். இந்த புத்தகம் மட்டும் அல்லாமல், இதன் மூலம் பெறப்பட்ட பணம் மூலமாகவும், பிற சமூக நல நிகழ்ச்சிகளில் பங்கேற்கும் வகையில் பயன்படுத்தப்படும்.

இந்த புத்தகம் மட்டும் அல்லாமல், இதன் மூலம் பெறப்பட்ட பணம் மூலமாகவும், பிற சமூக நல நிகழ்ச்சிகளில் பங்கேற்கும் வகையில் பயன்படுத்தப்படும். இந்த புத்தகம் மட்டும் அல்லாமல், இதன் மூலம் பெறப்பட்ட பணம் மூலமாகவும், பிற சமூக நல நிகழ்ச்சிகளில் பங்கேற்கும் வகையில் பயன்படுத்தப்படும்.

**TABLE 1: NO. OF ESTABLISHMENT\* & PERSONS ENGAGED BY DIVISIONAL SECRETARY DIVISION  
MORARAGALA DISTRICT - RURAL SECTOR - 1995**

D.S. DIVISION	NO. OF ESTABLISHMENTS	PERSONS ENGAGED
BADALKUMBURA.....	292	1,108
BIBILE.....	221	632
BUTTALA.....	157	1,278
KATHARAGAMA.....	6	77
MADULLA.....	141	442
MEDAGAMA.....	176	1,259
MORARAGALA.....	243	1,401
SIYAMBALANDUWA.....	300	668
THANAMALWILA.....	148	568
WELLAWAYA.....	335	976
<b>TOTAL.....</b>	<b>2,019</b>	<b>8,409</b>

\* - MINING & QUARRYING AND MANUFACTURING

**TABLE 2: NO. OF ESTABLISHMENT\* & PERSONS ENGAGED BY DIVISIONAL SECRETARY DIVISION & BY SECTOR  
MORARAGALA DISTRICT - RURAL SECTOR - 1995**

D.S. DIVISION	TYPE OF SECTOR			
	PRIVATE **		OTHER	
	NO. OF ESTABLISHMENTS	PERSONS ENGAGED	NO. OF ESTABLISHMENTS	PERSONS ENGAGED
BADALKUMBURA.....	282	996	10	112
BIBILE.....	216	624	5	8
BUTTALA.....	154	1,273	3	5
KATHARAGAMA.....	6	77	.	.
MADULLA.....	136	388	5	54
MEDAGAMA.....	170	777	6	482
MORARAGALA.....	234	1,290	9	111
SIYAMBALANDUWA.....	298	661	2	7
THANAMALWILA.....	145	560	3	8
WELLAWAYA.....	332	951	3	25
<b>TOTAL.....</b>	<b>1,973</b>	<b>7,597</b>	<b>46</b>	<b>812</b>

\* - MINING & QUARRYING AND MANUFACTURING

\*\* - EXCLUDING B.O.I.



TABLE 3: NO. OF ESTABLISHMENT\* & PERSONS ENGAGED BY DIVISIONAL SECRETARY DIVISION & BY SIZE CLASS  
 MONARAGALA DISTRICT - RURAL SECTOR - 1995

D.S. DIVISION	PERSONS ENGAGED SIZE CLASS					
	1 - 4		5 - 14		15 & ABOVE	
	NO. OF ESTABLISHMENTS	PERSONS ENGAGED	NO. OF ESTABLISHMENTS	PERSONS ENGAGED	NO. OF ESTABLISHMENTS	PERSONS ENGAGED
BADALKUMBURA.....	230	518	54	377	8	213
BIBILE.....	191	390	27	176	3	66
BUTTALA.....	137	280	18	123	4	945
KATEARAGAMA.....	4	7	.	.	-	-
MADULLA.....	110	218	28	174	3	50
HEGAGAMA.....	166	289	7	51	3	919
MONARAGALA.....	185	403	55	386	3	612
SIYAMBALANDUWA.....	268	471	32	197	.	.
THANAHALWILA.....	140	193	6	40	-	-
WELLAWAYA.....	306	594	25	166	6	551
TOTAL.....	1,737	3,363	252	1,690	30	3,356

\* - MINING & QUARRYING AND MANUFACTURING

TABLE 4: NO. OF ESTABLISHMENT\* & PERSONS ENGAGED BY MAJOR INDUSTRY DIVISION\*\* (ISIC 1 DIGIT LEVEL)  
 MONARAGALA DISTRICT - RURAL SECTOR - 1995

MAJOR INDUSTRY DIVISION	NO. OF ESTABLISHMENTS	PERSONS ENGAGED
C MINING & QUARRYING.....	75	360
D MANUFACTURING.....	1,944	8,049
TOTAL.....	2,019	8,409

\* - MINING & QUARRYING AND MANUFACTURING

\*\* - ISIC REVISION 03

TABLE 5: NO. OF ESTABLISHMENT\* & PERSONS ENGAGED BY INDUSTRY DIVISION\*\* (ISIC 2 DIGIT LEVEL)  
MONARAGALA DISTRICT - RURAL SECTOR - 1995

INDUSTRY DIVISION	NO. OF ESTABLISHMENTS	PERSONS ENGAGED
14 OTHER MINING & QUARRYING.....	75	360
15 FOOD PRODUCTS & BEVERAGES.....	777	2,472
16 TOBACCO PRODUCTS.....	79	647
17 TEXTILES.....	75	231
18 WEARING APPAREL DRESSING & DYEING OF FUR.....	102	2,401
19 TRAINING & DRESSING OF LEATHER, LEATHER GOODS & FOOTWEAR...	3	10
20 WOOD & WOOD PRODUCTS, EXCEPT FURNITURE.....	186	460
21 PAPER & PAPER PRODUCTS.....	4	15
25 RUBBER & PLASTICS PRODUCTS.....	12	86
26 OTHER NON-METALIC MINERAL PRODUCTS.....	403	1,045
28 FABRICATED METAL PRODUCTS, EXCEPT MACHINERY & EQUIPMENT.....	67	110
29 MACHINERY & EQUIPMENT N.E.C.....	30	43
36 MANU. OF FURNITURE, MANUFACTURING N.E.C.....	172	320
37 RECYCLING.....	7	35
99 OTHER PRODUCT.....	27	174
TOTAL.....	2,019	8,409

\* - MINING & QUARRYING AND MANUFACTURING

\*\* - ISIC REVISION 03

TABLE 6: NO. OF ESTABLISHMENT\* & PERSONS ENGAGED BY MAJOR INDUSTRY GROUP\*\* (ISIC 3 DIGIT LEVEL)  
MONARAGALA DISTRICT - RURAL SECTOR - 1995

MAJOR INDUSTRY GROUP	NO. OF ESTABLISHMENTS	PERSONS ENGAGED
141 QUARRYING OF STONE, SAND & CLAY.....	59	309
142 MINING & QUARRYING N.E.C.....	16	51
151 MEAT, FISH, FRUIT, VEGETABLE, OILS & FATS PRODUCTS.....	3	17
152 MANU. OF DAIRY PRODUCTS.....	30	74
153 GRAIN MILL, STARCHES & STARCH PRODUCTS, ANIMAL FEEDS.....	226	412
154 OTHER FOOD PRODUCTS.....	518	1,969
160 TOBACCO PRODUCTS.....	79	647
171 SPINNING, WEAVING & FINISHING OF TEXTILES.....	15	54
172 OTHER TEXTILES.....	52	168
173 KNITTED & CROCHETED FABRICS & ARTICLES.....	8	9
181 WEARING APPAREL, EXCEPT FUR APPAREL.....	102	2,401
191 TANNING & LEATHER.....	3	10
201 SAWMILLING & PLANING OF WOOD.....	16	78
202 MANU. OF PRODUCTS OF WOOD, CORK, STRAW & PLAITING MATERIALS..	170	382
210 PAPER & PAPER PRODUCTS.....	4	15
251 RUBBER PRODUCTS.....	12	86
269 NON-METALLIC MINERAL PRODUCTS N.E.C.....	403	1,045
281 STRUCTURAL METAL PRODUCTS.....	6	12
289 OTHER FABRICATED METAL PRODUCTS.....	61	98
292 SPECIAL PURPOSE MACHINERY.....	30	43
361 MANU. OF FURNITURE.....	131	237
369 MANUFACTURING N.E.C.....	41	83
372 RECYCLING OF NON-METAL WASTE & SCRAP.....	7	35
999 OTHER PRODUCT.....	27	174
TOTAL.....	2,019	8,409

\* - MINING & QUARRYING AND MANUFACTURING

\*\* - ISIC REVISION 03

TABLE 7: NO. OF ESTABLISHMENT\* & PERSONS ENGAGED BY INDUSTRY GROUP\*\* (ISIC 4 DIGIT LEVEL)  
MONARAGALA DISTRICT - RURAL SECTOR - 1995

INDUSTRY GROUP	NO. OF ESTABLISHMENTS	PERSONS ENGAGED
1410 QUARRYING OF STONE, SAND & CLAY.....	59	309
1429 OTHER MINING & QUARRYING N.B.C.....	16	51
1511 PRODU., PROCESSING & PRESERVING OF MEAT & MEAT PRODUCTS...	3	17
1520 DAIRY PRODUCTS.....	30	74
1531 GRAIN MILL PRODUCTS.....	226	412
1541 BAKERY PRODUCTS.....	140	380
1542 MANUFACTURE OF SUGER.....	346	1,453
1543 COCOA, CHOCOLATE & SUGER CONFECTIONERY.....	7	19
1549 OTHER FOOD PRODUCTS N.B.C.....	25	117
1600 TOBACCO PRODUCTS.....	79	647
1711 PREPARATION & SPINNING OF TEXTILE FIBRES.....	10	45
1712 FINISHING OF TEXTILES.....	5	9
1721 MADE-UP TEXTILE ARTICLES, EXCEPT APPAREL.....	17	99
1722 CARPETS & RUGS.....	26	59
1723 CORDAGE, ROPE, TWINE & NETTING.....	9	10
1730 KNITTED & CROCHETED FABRICS & ARTICLES.....	8	9
1810 WEARING APPAREL, EXCEPT FUR APPAREL.....	102	2,401
1912 MANU. OF LEATHER GOODS.....	3	10
2010 SAWMILLING & PLANING OF WOOD.....	16	78
2022 BUILDERS CARPENTARY & JOINERY.....	49	182
2023 WOODEN CONTAINERS.....	13	20
2029 OTHER PRODUCTS OF WOOD.....	108	180
2109 OTHER ARTICLES OF PAPER & PAPERBOARD.....	4	15
2519 OTHER RUBBER PRODUCTS.....	12	86
2691 NON-STRUCTURAL NON- REFRACTORY CERAMIC WARE.....	15	30
2692 REFRACTORY CERAMIC PRODUCTS.....	220	549
2693 STRUCTURAL NONO-REFRACTORY CLAY & CERAMIC PRODUCTS.....	155	425
2695 ARTICLES OF CONCRETE, CEMENT & PLASTER.....	6	18
2696 CUTTING, SHAPING & FINISHING OF STONE.....	7	23
2811 STRUCTURAL METAL PRODUCTS.....	6	12
2893 CUTLERY, HAND TOOLS & GENERAL HARDWARE.....	51	82
2899 OTHER FABRICATED METAL PRODUCTS.....	10	16
2921 AGRICULTURAL & FORESTY MACHINERY.....	30	43
3610 FURNITURE.....	131	237
3691 JEWELLERY & RELATED ARTICLES.....	4	8
3699 OTHER MANUFACTURING N.B.C.....	37	75
3720 RECYCLING OF NON-METAL WASTE & SCRAP.....	7	35
9999 OTHER PRODUCT.....	27	174
TOTAL.....	2,019	8,409

\* - MINING & QUARRYING AND MANUFACTURING

\*\* - ISIC REVISION 03

**TABLE 8: NO. OF ESTABLISHMENTS\* & PERSONS ENGAGED BY DIVISIONAL SECRETARY DIVISION & MAJOR INDUSTRY DIVISION\*\* (ISIC 1 DIGIT LEVEL)  
MONARAGALA DISTRICT - RURAL SECTOR - 1995**

D.S. DIVISION & MAJOR INDUSTRY DIVISION	NO. OF ESTABLISHMENTS	PERSONS ENGAGED
<b>BADALKUMBURA</b>		
C MINING & QUARRYING.....	11	66
D MANUFACTURING.....	201	1,042
<b>BIBILE</b>		
C MINING & QUARRYING.....	10	65
D MANUFACTURING.....	203	567
<b>BUTTALA</b>		
C MINING & QUARRYING.....	9	44
D MANUFACTURING.....	140	1,234
<b>KATHARAGAMA</b>		
C MINING & QUARRYING.....	3	72
D MANUFACTURING.....	3	5
<b>MADULLA</b>		
C MINING & QUARRYING.....	3	11
D MANUFACTURING.....	130	431
<b>MEDAGAMA</b>		
C MINING & QUARRYING.....	13	22
D MANUFACTURING.....	163	1,237
<b>MONERAGALA</b>		
C MINING & QUARRYING.....	9	20
D MANUFACTURING.....	234	1,373
<b>SIYAMBALANDUWA</b>		
C MINING & QUARRYING.....	4	20
D MANUFACTURING.....	296	648
<b>THANAMALWILA</b>		
C MINING & QUARRYING.....	3	19
D MANUFACTURING.....	145	549
<b>WELLAWAYA</b>		
C MINING & QUARRYING.....	2	13
D MANUFACTURING.....	333	963
<b>TOTAL.....</b>	<b>2,019</b>	<b>8,409</b>

\* - MINING & QUARRYING AND MANUFACTURING

\*\* - ISIC REVISION 03

TABLE 9: NO. OF ESTABLISHMENT\* & PERSONS ENGAGED BY DIVISIONAL SECRETARY DIVISION & INDUSTRY DIVISION\*\* (ISIC 2 DIGIT LEVEL)  
 NONARAGALA DISTRICT - RURAL SECTOR - 1995

D.S. DIVISION & INDUSTRY DIVISION	NO. OF ESTABLISHMENTS	PERSONS ENGAGED
<b>BADALKUMBURA</b>		
14 OTHER MINING & QUARRYING.....	11	66
15 FOOD PRODUCTS & BEVERAGES.....	168	648
16 TOBACCO PRODUCTS.....	24	67
17 TEXTILES.....	8	34
18 WEARING APPEREL DRESSING & DYEING OF FUR.....	5	41
20 WOOD & WOOD PRODUCTS, EXCEPT FURNITURE.....	14	66
25 RUBBER & PLASTICS PRODUCTS.....	7	52
26 OTHER NON-METALIC MINERAL PRODUCTS.....	26	81
28 FABRICATED METAL PRODUCTS, EXCEPT MACHINERY & EQUIPMENT...	9	13
36 MANU. OF FURNITURE, MANUFACTURING N.E.C.....	16	29
37 RECYCLING.....	4	11
<b>BIBILE</b>		
14 OTHER MINING & QUARRYING.....	18	65
15 FOOD PRODUCTS & BEVERAGES.....	35	124
16 TOBACCO PRODUCTS.....	7	16
17 TEXTILES.....	10	18
18 WEARING APPEREL DRESSING & DYEING OF FUR.....	3	8
20 WOOD & WOOD PRODUCTS, EXCEPT FURNITURE.....	20	32
26 OTHER NON-METALIC MINERAL PRODUCTS.....	77	240
28 FABRICATED METAL PRODUCTS, EXCEPT MACHINERY & EQUIPMENT...	11	14
36 MANU. OF FURNITURE, MANUFACTURING N.E.C.....	34	84
99 OTHER PRODUCT.....	6	31
<b>BUTTALA</b>		
14 OTHER MINING & QUARRYING.....	9	44
15 FOOD PRODUCTS & BEVERAGES.....	44	132
16 TOBACCO PRODUCTS.....	7	466
17 TEXTILES.....	12	15
18 WEARING APPEREL DRESSING & DYEING OF FUR.....	8	435
20 WOOD & WOOD PRODUCTS, EXCEPT FURNITURE.....	8	15
26 OTHER NON-METALIC MINERAL PRODUCTS.....	28	80
28 FABRICATED METAL PRODUCTS, EXCEPT MACHINERY & EQUIPMENT...	5	10
36 MANU. OF FURNITURE, MANUFACTURING N.E.C.....	30	64
99 OTHER PRODUCT.....	6	17
<b>KATHARAGAMA</b>		
14 OTHER MINING & QUARRYING.....	3	72
26 OTHER NON-METALIC MINERAL PRODUCTS.....	3	5
<b>MADULLA</b>		
14 OTHER MINING & QUARRYING.....	3	11
15 FOOD PRODUCTS & BEVERAGES.....	71	282
17 TEXTILES.....	12	60
20 WOOD & WOOD PRODUCTS, EXCEPT FURNITURE.....	32	45
26 OTHER NON-METALIC MINERAL PRODUCTS.....	5	11

(continued)

\* - MINING &amp; QUARRYING AND MANUFACTURING

\*\* - ISIC REVISION 03



TABLE 9:NO.OF ESTABLISHMENT\* & PERSONS ENGAED BY DIVISIONAL SECRETARY DIVISION &  
INDUSTRY DIVISION\*\* (ISIC 2 DIGIT LEVEL)  
MONARAGALA DISTRICT - RURAL SECTOR - 1995

D.S.DIVISION & INDUSTRY DIVISION	NO.OF ESTABLISHMENTS	PERSONS ENGAGED
28 FABRICATED METAL PRODUCTS, EXCEPT MACHINERY & EQUIPMENT...	11	23
36 MANU.OF FURNITURE, MANUFACTURING N.E.C.....	3	3
99 OTHER PRODUCT.....	4	7
<b>MEDAGAMA</b>		
14 OTHER MINING & QUARRYING.....	13	22
15 FOOD PRODUCTS & BEVERAGES.....	36	84
16 TOBACCO PRODUCTS.....	34	79
17 TEXTILES.....	11	30
18 WEARING APPEREL DRESSING & DYING OF FUR.....	18	925
20 WOOD & WOOD PRODUCTS, EXCEPT FURNITURE.....	40	60
26 OTHER NON-METALIC MINERAL PRODUCTS.....	13	32
28 FABRICATED METAL PRODUCTS, EXCEPT MACHINERY & EQUIPMENT...	4	6
36 MANU.OF FURNITURE, MANUFACTURING N.E.C.....	5	7
99 OTHER PRODUCT.....	2	14
<b>MONERAGALA</b>		
14 OTHER MINING & QUARRYING.....	9	28
15 FOOD PRODUCTS & BEVERAGES.....	118	456
16 TOBACCO PRODUCTS.....	7	19
17 TEXTILES.....	5	45
18 WEARING APPEREL DRESSING & DYING OF FUR.....	23	614
20 WOOD & WOOD PRODUCTS, EXCEPT FURNITURE.....	12	63
21 PAPER & PAPER PRODUCTS.....	3	11
26 OTHER NON-METALIC MINERAL PRODUCTS.....	24	72
28 FABRICATED METAL PRODUCTS, EXCEPT MACHINERY & EQUIPMENT...	6	11
29 MACHINERY & EQUIPMENT N.E.C.....	6	12
36 MANU.OF FURNITURE, MANUFACTURING N.E.C.....	25	44
37 RECYCLING.....	3	24
99 OTHER PRODUCT.....	2	2
<b>SIYAMBALANDUWA</b>		
14 OTHER MINING & QUARRYING.....	4	20
15 FOOD PRODUCTS & BEVERAGES.....	130	376
17 TEXTILES.....	12	13
18 WEARING APPEREL DRESSING & DYING OF FUR.....	20	21
20 WOOD & WOOD PRODUCTS, EXCEPT FURNITURE.....	33	46
26 OTHER NON-METALIC MINERAL PRODUCTS.....	32	86
28 FABRICATED METAL PRODUCTS, EXCEPT MACHINERY & EQUIPMENT...	5	7
29 MACHINERY & EQUIPMENT N.E.C.....	23	30
36 MANU.OF FURNITURE, MANUFACTURING N.E.C.....	38	63
99 OTHER PRODUCT.....	3	6
<b>THANAMALWILA</b>		
14 OTHER MINING & QUARRYING.....	3	19
15 FOOD PRODUCTS & BEVERAGES.....	85	130
17 TEXTILES.....	4	8
18 WEARING APPEREL DRESSING & DYING OF FUR.....	9	334

(continued)

\* - MINING &amp; QUARRYING AND MANUFACTURING

\*\* - ISIC REVISION 03

TABLE 9: NO. OF ESTABLISHMENT\* & PERSONS ENGAGED BY DIVISIONAL SECRETARY DIVISION & INDUSTRY DIVISION\*\* (ISIC 2 DIGIT LEVEL)  
MONARAGALA DISTRICT - RURAL SECTOR - 1995

D.S.DIVISION & INDUSTRY DIVISION	NO. OF ESTABLISHMENTS	PERSONS ENGAGED
20 WOOD & WOOD PRODUCTS, EXCEPT FURNITURE.....	4	5
26 OTHER NON-METALIC MINERAL PRODUCTS.....	15	27
28 FABRICATED METAL PRODUCTS, EXCEPT MACHINERY & EQUIPMENT...	4	5
36 MANU. OF FURNITURE, MANUFACTURING N.E.C.....	19	21
99 OTHER PRODUCT.....	5	19
<b>WELLAWAYA</b>		
14 OTHER MINING & QUARRYING.....	2	13
15 FOOD PRODUCTS & BEVERAGES.....	90	240
18 WEARING APPEREL DRESSING & DYEING OF FUR.....	16	23
20 WOOD & WOOD PRODUCTS, EXCEPT FURNITURE.....	23	128
25 RUBBER & PLASTICS PRODUCTS.....	3	8
26 OTHER NON-METALIC MINERAL PRODUCTS.....	180	411
28 FABRICATED METAL PRODUCTS, EXCEPT MACHINERY & EQUIPMENT...	12	21
99 OTHER PRODUCT.....	9	132
<b>TOTAL.....</b>	<b>2,019</b>	<b>8,409</b>

\* - MINING & QUARRYING AND MANUFACTURING

\*\* - ISIC REVISION 03

TABLE 10: DISTRIBUTION OF ESTABLISHMENT\* & PERSONS ENGAGED BY DIVISIONAL  
SECRETARY DIVISION & PERSONS ENGAGED SIZE CLASS  
MONARAGALA DISTRICT - RURAL SECTOR - 1995

D.S.DIVISION & INDUSTRY DIVISION	NO.OF ESTABLISHMENTS
<b>BADALKUMBURA</b>	
<b>14 OTHER MINING &amp; QUARRYING</b>	
1 - 4.....	8
5 - 14.....	2
15 & ABOVE.....	1
<b>15 FOOD PRODUCTS &amp; BEVERAGES</b>	
1 - 4.....	132
5 - 14.....	32
15 & ABOVE.....	4
<b>16 TOBACCO PRODUCTS</b>	
1 - 4.....	20
5 - 14.....	4
<b>17 TEXTILES</b>	
1 - 4.....	5
5 - 14.....	3
<b>18 WEARING APPEREL DRESSING &amp; DYEING OF FUR</b>	
1 - 4.....	4
15 & ABOVE.....	1
<b>20 WOOD &amp; WOOD PRODUCTS, EXCEPT FURNITURE</b>	
1 - 4.....	7
5 - 14.....	7
<b>25 RUBBER &amp; PLASTICS PRODUCTS</b>	
1 - 4.....	4
5 - 14.....	1
15 & ABOVE.....	2
<b>26 OTHER NON-METALIC MINERAL PRODUCTS</b>	
1 - 4.....	22
5 - 14.....	4
<b>28 FABRICATED METAL PRODUCTS, EXCEPT MACHINERY &amp; EQUIPMENT</b>	
1 - 4.....	9
<b>36 MANU.OF FURNITURE, MANUFACTURING N.E.C.</b>	
1 - 4.....	16
<b>37 RECYCLING</b>	
1 - 4.....	3
5 - 14.....	1
<b>BIBILE</b>	
<b>14 OTHER MINING &amp; QUARRYING</b>	
1 - 4.....	11
5 - 14.....	7
<b>15 FOOD PRODUCTS &amp; BEVERAGES</b>	
1 - 4.....	29
5 - 14.....	5
15 & ABOVE.....	1
<b>16 TOBACCO PRODUCTS</b>	
1 - 4.....	6
5 - 14.....	1

(continued)

\* - MINING &amp; QUARRYING AND MANUFACTURING

**TABLE 10: DISTRIBUTION OF ESTABLISHMENT\* & PERSONS ENGAGED BY DIVISIONAL  
SECRETARY DIVISION & PERSONS ENGAGED SIZE CLASS  
MORARAGALA DISTRICT - RURAL SECTOR - 1995**

D.S.DIVISION & INDUSTRY DIVISION	NO.OF ESTABLISHMENTS
<b>17 TEXTILES</b>	
1 - 4.....	9
5 - 14.....	1
<b>18 WEARING APPERL DRESSING &amp; DYING OF FUR</b>	
1 - 4.....	2
5 - 14.....	1
<b>20 WOOD &amp; WOOD PRODUCTS, EXCEPT FURNITURE</b>	
1 - 4.....	19
5 - 14.....	1
<b>25 RUBBER &amp; PLASTICS PRODUCTS</b>	
15 & ABOVE.....	1
<b>26 OTHER NON-METALIC MINERAL PRODUCTS</b>	
1 - 4.....	66
5 - 14.....	11
<b>28 FABRICATED METAL PRODUCTS, EXCEPT MACHINERY &amp; EQUIPMENT</b>	
1 - 4.....	11
<b>36 MANU.OF FURNITURE, MANUFACTURING N.B.C.</b>	
1 - 4.....	33
15 & ABOVE.....	1
<b>99 OTHER PRODUCT</b>	
1 - 4.....	5
<b>BUTTALA</b>	
<b>14 OTHER MINING &amp; QUARRYING</b>	
1 - 4.....	4
5 - 14.....	5
<b>15 FOOD PRODUCTS &amp; BEVERAGES</b>	
1 - 4.....	37
5 - 14.....	7
<b>16 TOBACCO PRODUCTS</b>	
1 - 4.....	6
15 & ABOVE.....	1
<b>17 TEXTILES</b>	
1 - 4.....	12
<b>18 WEARING APPERL DRESSING &amp; DYING OF FUR</b>	
1 - 4.....	7
15 & ABOVE.....	1
<b>19 TRAINING &amp; DRESSING OF LEATHER, LEATHER GOODS &amp; FOOTWEAR</b>	
1 - 4.....	1
<b>20 WOOD &amp; WOOD PRODUCTS, EXCEPT FURNITURE</b>	
1 - 4.....	8
<b>21 PAPER &amp; PAPER PRODUCTS</b>	
1 - 4.....	1
<b>26 OTHER NON-METALIC MINERAL PRODUCTS</b>	
1 - 4.....	25
5 - 14.....	3
<b>28 FABRICATED METAL PRODUCTS, EXCEPT MACHINERY &amp; EQUIPMENT</b>	
1 - 4.....	5

(continued)

\* - MINING &amp; QUARRYING AND MANUFACTURING

**TABLE 10: DISTRIBUTION OF ESTABLISHMENT\* & PERSONS ENGAGED BY DIVISIONAL  
SECRETARY DIVISION & PERSONS ENGAGED SIZE CLASS  
MONARAGALA DISTRICT - RURAL SECTOR - 1995**

<b>D.S.DIVISION &amp; INDUSTRY DIVISION</b>	<b>NO.OF ESTABLISHMENTS</b>
<b>36 MANU.OF FURNITURE, MANUFACTURING N.B.C.</b>	
1 - 4.....	27
5 - 14.....	3
<b>99 OTHER PRODUCT</b>	
1 - 4.....	4
<b>KATHARAGAMA</b>	
<b>14 OTHER MINING &amp; QUARRYING</b>	
1 - 4.....	1
15 & ABOVE.....	2
<b>26 OTHER NON-METALIC MINERAL PRODUCTS</b>	
1 - 4.....	3
<b>MADULLA</b>	
<b>14 OTHER MINING &amp; QUARRYING</b>	
1 - 4.....	2
5 - 14.....	1
<b>15 FOOD PRODUCTS &amp; BEVERAGES</b>	
1 - 4.....	45
5 - 14.....	26
<b>17 TEXTILES</b>	
1 - 4.....	9
15 & ABOVE.....	3
<b>20 WOOD &amp; WOOD PRODUCTS, EXCEPT FURNITURE</b>	
1 - 4.....	31
5 - 14.....	1
<b>26 OTHER NON-METALIC MINERAL PRODUCTS</b>	
1 - 4.....	5
<b>28 FABRICATED METAL PRODUCTS, EXCEPT MACHINERY &amp; EQUIPMENT</b>	
1 - 4.....	11
<b>36 MANU.OF FURNITURE, MANUFACTURING N.B.C.</b>	
1 - 4.....	3
<b>99 OTHER PRODUCT</b>	
1 - 4.....	4
<b>MEDAGAMA</b>	
<b>14 OTHER MINING &amp; QUARRYING</b>	
1 - 4.....	13
<b>15 FOOD PRODUCTS &amp; BEVERAGES</b>	
1 - 4.....	34
5 - 14.....	2
<b>16 TOBACCO PRODUCTS</b>	
1 - 4.....	34
<b>17 TEXTILES</b>	
1 - 4.....	10
15 & ABOVE.....	1
<b>18 WEAVING APPAREL DRESSING &amp; DYEING OF FUR</b>	
1 - 4.....	15
5 - 14.....	1
15 & ABOVE.....	2

(continued)

\* - MINING &amp; QUARRYING AND MANUFACTURING



TABLE 10: DISTRIBUTION OF ESTABLISHMENT\* & PERSONS ENGAGED BY DIVISIONAL  
SECRETARY DIVISION & PERSONS ENGAGED SIZE CLASS  
MONARAGALA DISTRICT - RURAL SECTOR - 1995

D.S.DIVISION & INDUSTRY DIVISION	NO.OF ESTABLISHMENTS
<b>20 WOOD &amp; WOOD PRODUCTS, EXCEPT FURNITURE</b>	
1 - 4.....	39
5 - 14.....	1
<b>25 RUBBER &amp; PLASTICS PRODUCTS</b>	
5 - 14.....	1
<b>26 OTHER NON-METALIC MINERAL PRODUCTS</b>	
1 - 4.....	12
5 - 14.....	1
<b>28 FABRICATED METAL PRODUCTS, EXCEPT MACHINERY &amp; EQUIPMENT</b>	
1 - 4.....	4
<b>36 MANU.OF FURNITURE, MANUFACTURING N.B.C.</b>	
1 - 4.....	5
<b>99 OTHER PRODUCT</b>	
5 - 14.....	1
<b>MONARAGALA</b>	
<b>14 OTHER MINING &amp; QUARRYING</b>	
1 - 4.....	6
5 - 14.....	3
<b>15 FOOD PRODUCTS &amp; BEVERAGES</b>	
1 - 4.....	84
5 - 14.....	34
<b>16 TOBACCO PRODUCTS</b>	
1 - 4.....	5
5 - 14.....	2
<b>17 TEXTILES</b>	
1 - 4.....	1
5 - 14.....	4
<b>18 WEARING APPEREL DRESSING &amp; DYEING OF FUR</b>	
1 - 4.....	16
5 - 14.....	6
15 & ABOVE.....	1
<b>20 WOOD &amp; WOOD PRODUCTS, EXCEPT FURNITURE</b>	
1 - 4.....	10
5 - 14.....	1
15 & ABOVE.....	1
<b>21 PAPER &amp; PAPER PRODUCTS</b>	
1 - 4.....	2
5 - 14.....	1
<b>26 OTHER NON-METALIC MINERAL PRODUCTS</b>	
1 - 4.....	21
5 - 14.....	3
<b>28 FABRICATED METAL PRODUCTS, EXCEPT MACHINERY &amp; EQUIPMENT</b>	
1 - 4.....	6
<b>29 MACHINERY &amp; EQUIPMENT N.B.C.</b>	
1 - 4.....	6

(continued)

\* - MINING &amp; QUARRYING AND MANUFACTURING

**TABLE 10: DISTRIBUTION OF ESTABLISHMENT\* & PERSONS ENGAGED BY DIVISIONAL  
SECRETARY DIVISION & PERSONS ENGAGED SIZE CLASS  
MONARAGALA DISTRICT - RURAL SECTOR - 1995**

D.S.DIVISION & INDUSTRY DIVISION	NO.OF ESTABLISHMENTS
<b>36 MANU.OF FURNITURE, MANUFACTURING N.B.C.</b>	
1 - 4.....	24
5 - 14.....	1
<b>37 RECYCLING</b>	
1 - 4.....	2
15 & ABOVE.....	1
<b>99 OTHER PRODUCT</b>	
1 - 4.....	2
<b>SIYAMBALANDUWA</b>	
<b>14 OTHER MINING &amp; QUARRYING</b>	
1 - 4.....	2
5 - 14.....	2
<b>15 FOOD PRODUCTS &amp; BEVERAGES</b>	
1 - 4.....	105
5 - 14.....	25
<b>17 TEXTILES</b>	
1 - 4.....	12
<b>18 WEARING APPEREL DRESSING &amp; DYING OF FUR</b>	
1 - 4.....	20
<b>19 TRAINING &amp; DRESSING OF LEATHER, LEATHER GOODS &amp; FOOTWEAR</b>	
1 - 4.....	1
<b>20 WOOD &amp; WOOD PRODUCTS, EXCEPT FURNITURE</b>	
1 - 4.....	33
<b>26 OTHER NON-METALIC MINERAL PRODUCTS</b>	
1 - 4.....	29
5 - 14.....	3
<b>28 FABRICATED METAL PRODUCTS, EXCEPT MACHINERY &amp; EQUIPMENT</b>	
1 - 4.....	5
<b>29 MACHINERY &amp; EQUIPMENT N.B.C.</b>	
1 - 4.....	23
<b>36 MANU.OF FURNITURE, MANUFACTURING N.B.C.</b>	
1 - 4.....	36
5 - 14.....	2
<b>99 OTHER PRODUCT</b>	
1 - 4.....	2
<b>THANAMALWILA</b>	
<b>14 OTHER MINING &amp; QUARRYING</b>	
1 - 4.....	2
15 & ABOVE.....	1
<b>15 FOOD PRODUCTS &amp; BEVERAGES</b>	
1 - 4.....	83
5 - 14.....	2
<b>17 TEXTILES</b>	
1 - 4.....	4
<b>18 WEARING APPEREL DRESSING &amp; DYING OF FUR</b>	
1 - 4.....	7
5 - 14.....	1
15 & ABOVE.....	1

(continued)

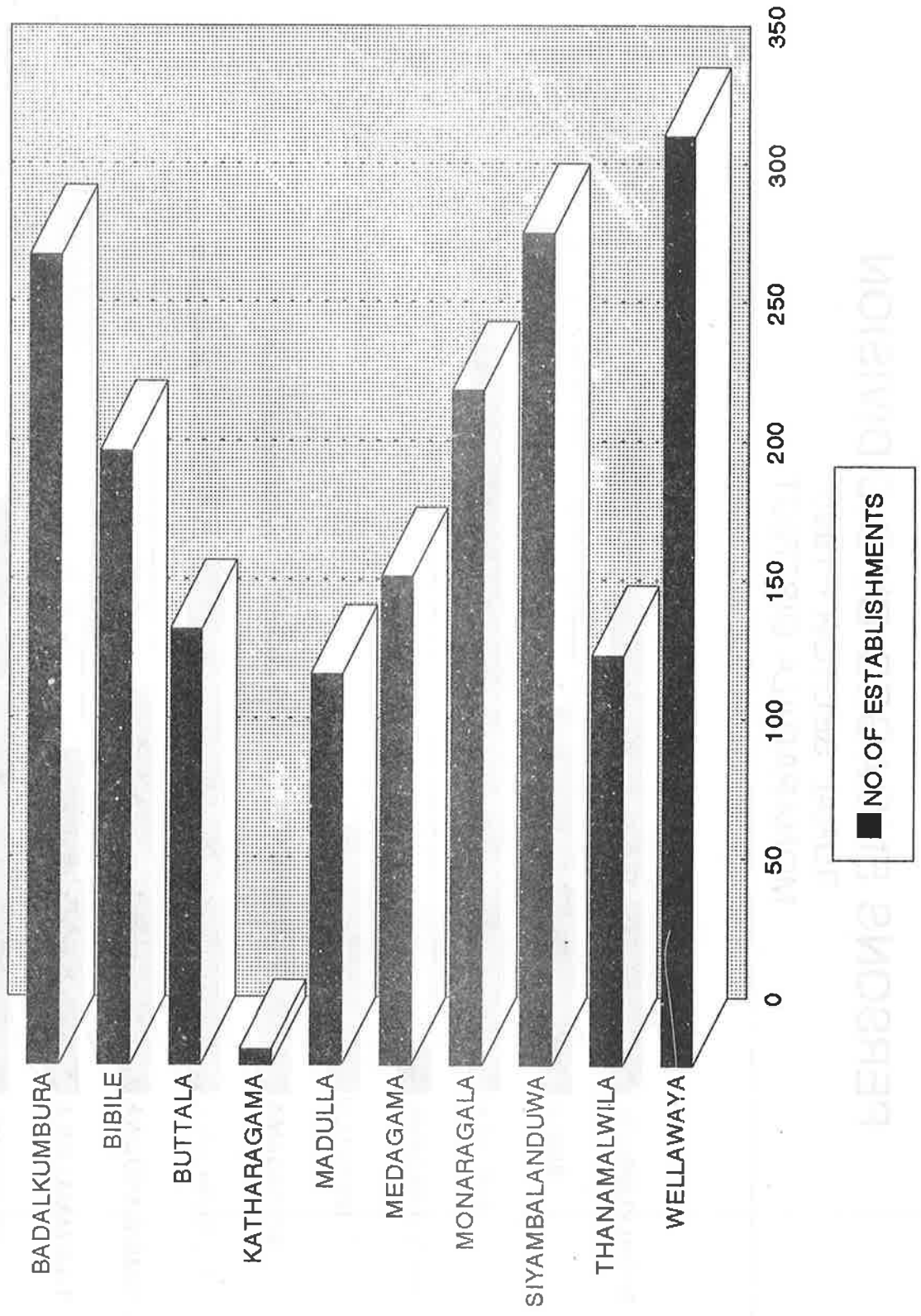
\* - MINING &amp; QUARRYING AND MANUFACTURING

**TABLE 10: DISTRIBUTION OF ESTABLISHMENT\* & PERSONS ENGAGED BY DIVISIONAL  
SECRETARY DIVISION & PERSONS ENGAGED SIZE CLASS  
MONARAGALA DISTRICT - RURAL SECTOR - 1995**

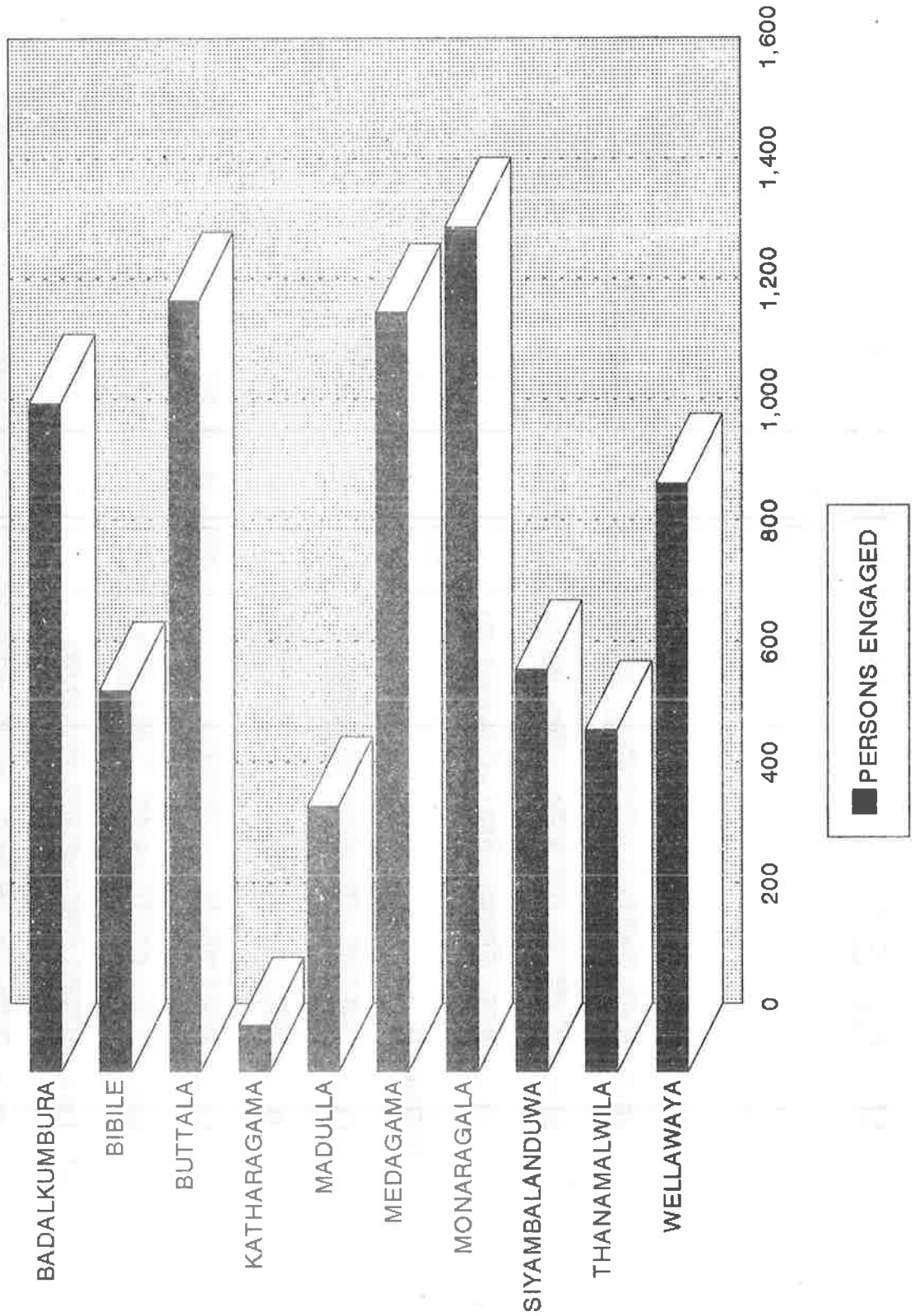
<b>D.S. DIVISION &amp; INDUSTRY DIVISION</b>	<b>NO. OF ESTABLISHMENTS</b>
<b>20 WOOD &amp; WOOD PRODUCTS, EXCEPT FURNITURE</b>	
1 - 4.....	4
<b>26 OTHER NON-METALIC MINERAL PRODUCTS</b>	
1 - 4.....	14
5 - 14.....	1
<b>28 FABRICATED METAL PRODUCTS, EXCEPT MACHINERY &amp; EQUIPMENT</b>	
1 - 4.....	4
<b>29 MACHINERY &amp; EQUIPMENT N.E.C.</b>	
1 - 4.....	1
<b>36 MANU. OF FURNITURE, MANUFACTURING N.E.C.</b>	
1 - 4.....	19
<b>99 OTHER PRODUCT</b>	
1 - 4.....	2
5 - 14.....	2
<b>WELLAWAYA</b>	
<b>14 OTHER MINING &amp; QUARRYING</b>	
5 - 14.....	2
<b>15 FOOD PRODUCTS &amp; BEVERAGES</b>	
1 - 4.....	79
5 - 14.....	11
<b>17 TEXTILES</b>	
5 - 14.....	1
<b>18 WEARING APPAREL DRESSING &amp; DYEING OF FUR</b>	
1 - 4.....	15
5 - 14.....	1
<b>19 TANNING &amp; DRESSING OF LEATHER, LEATHER GOODS &amp; FOOTWEAR</b>	
1 - 4.....	1
<b>20 WOOD &amp; WOOD PRODUCTS, EXCEPT FURNITURE</b>	
1 - 4.....	21
15 & ABOVE.....	2
<b>25 RUBBER &amp; PLASTICS PRODUCTS</b>	
1 - 4.....	2
5 - 14.....	1
<b>26 OTHER NON-METALIC MINERAL PRODUCTS</b>	
1 - 4.....	172
5 - 14.....	7
15 & ABOVE.....	1
<b>28 FABRICATED METAL PRODUCTS, EXCEPT MACHINERY &amp; EQUIPMENT</b>	
1 - 4.....	11
5 - 14.....	1
<b>36 MANU. OF FURNITURE, MANUFACTURING N.E.C.</b>	
1 - 4.....	2
<b>99 OTHER PRODUCT</b>	
1 - 4.....	3
5 - 14.....	1
15 & ABOVE.....	1
<b>TOTAL.....</b>	<b>2,019</b>

\* - MINING & QUARRYING AND MANUFACTURING

**NO.OF ESTABLISHMENTS BY D.S.DIVISION**  
**RURAL SECTOR - 1995**  
**MONARAGALA DISTRICT**



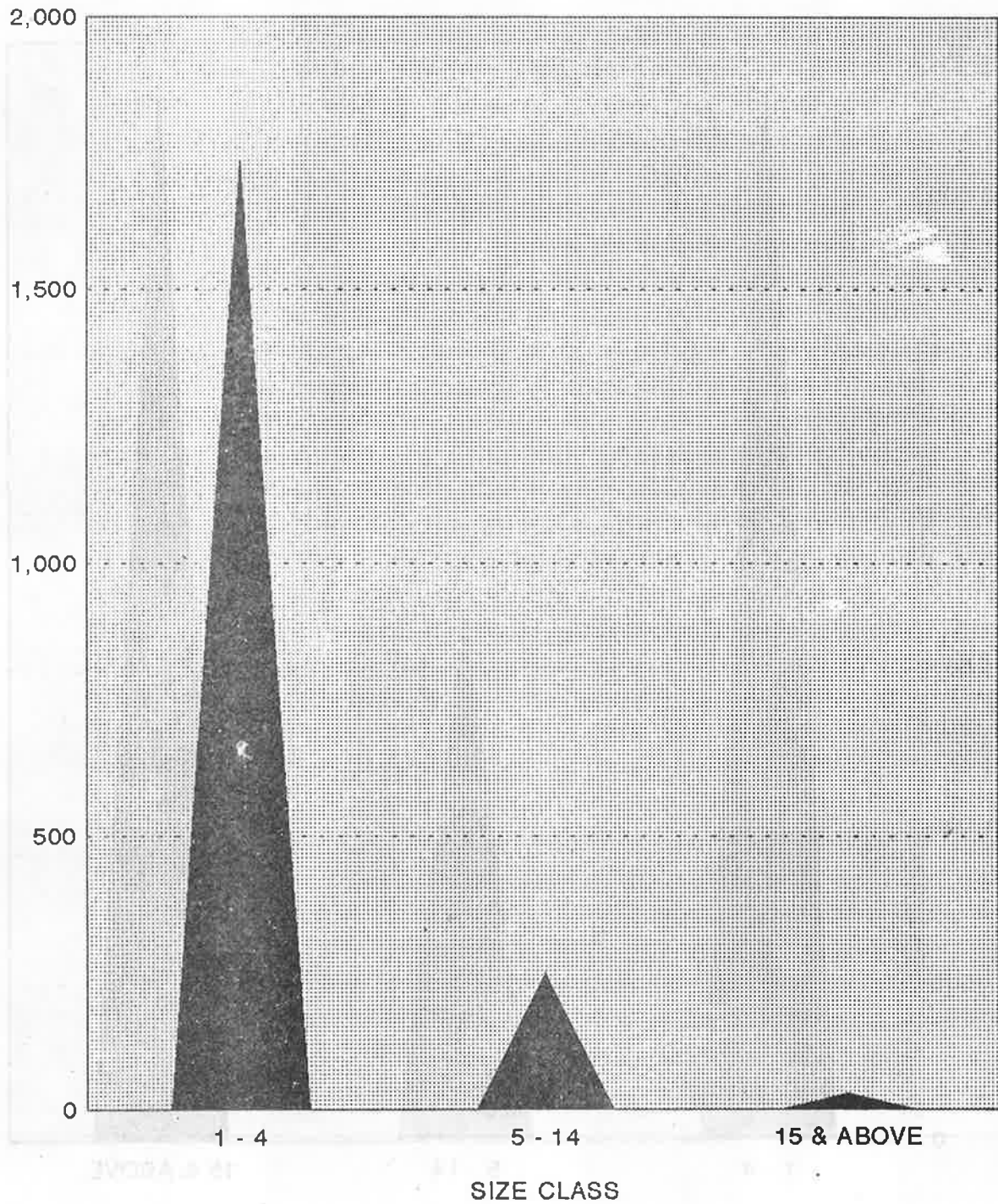
# PERSONS ENGAGED BY D.S.DIVISION RURAL SECTOR - 1995 MONARAGALA DISTRICT





# NO.OF ESTABLISHMENT BY PERSONS ENGAGED SIZE CLASS

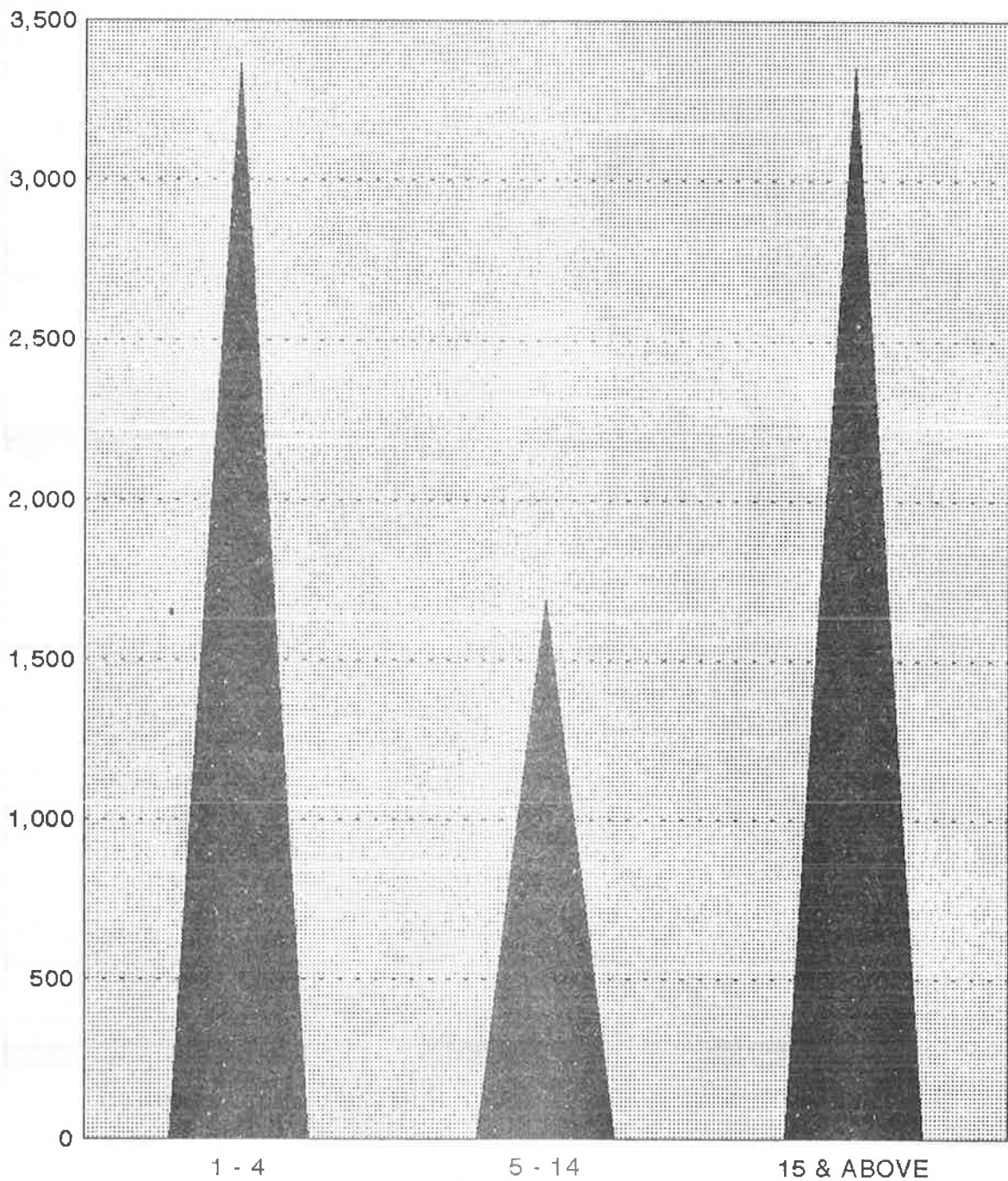
RURAL SECTOR - 1995  
MONARAGALA DISTRICT



▲ NO.OF ESTABLISHMENTS

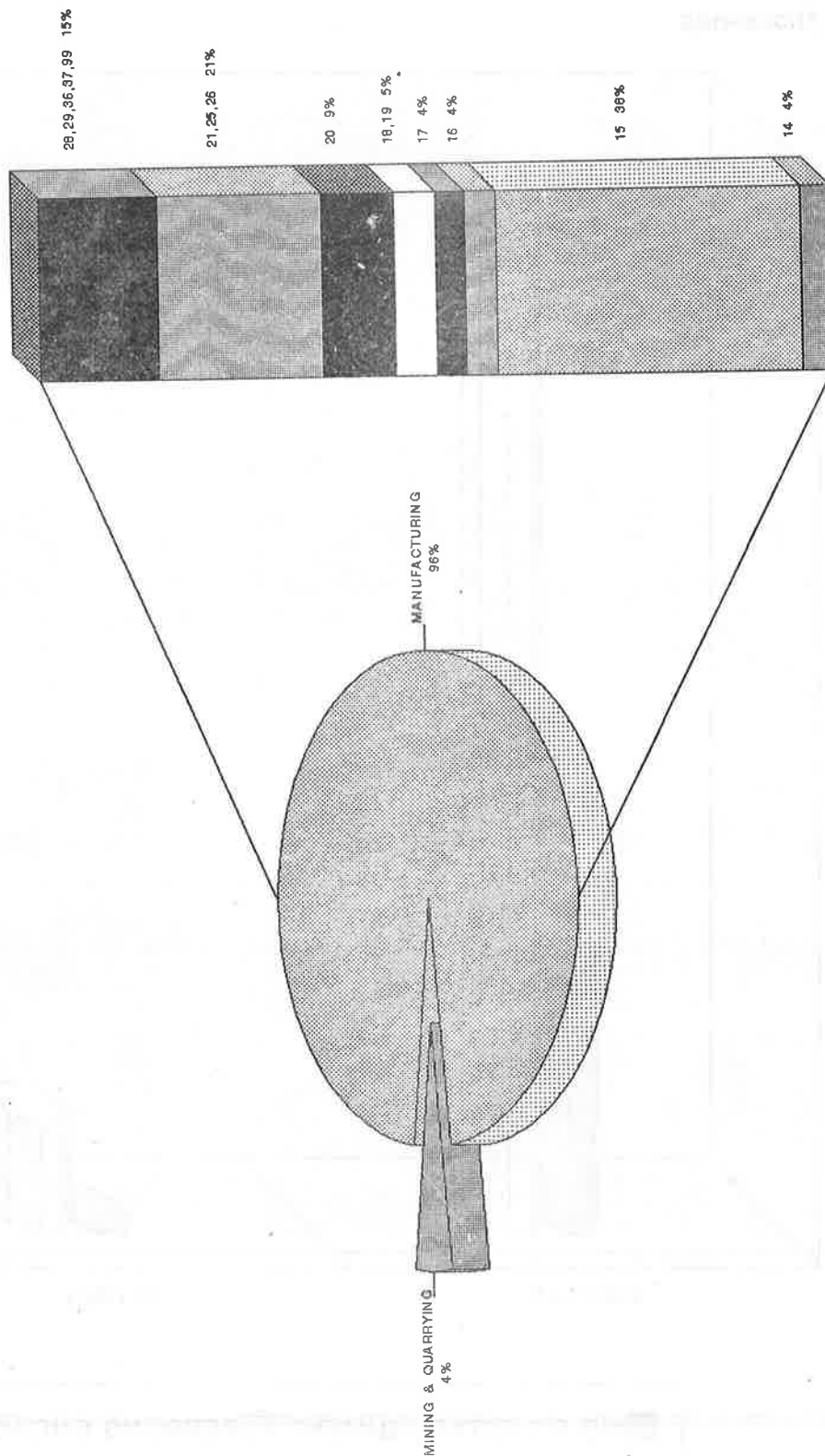
# PERSONS ENGAGED BY SIZE CLASS

RURAL SECTOR - 1995  
MONARAGALA DISTRICT



▲ PERSONS ENGAGED

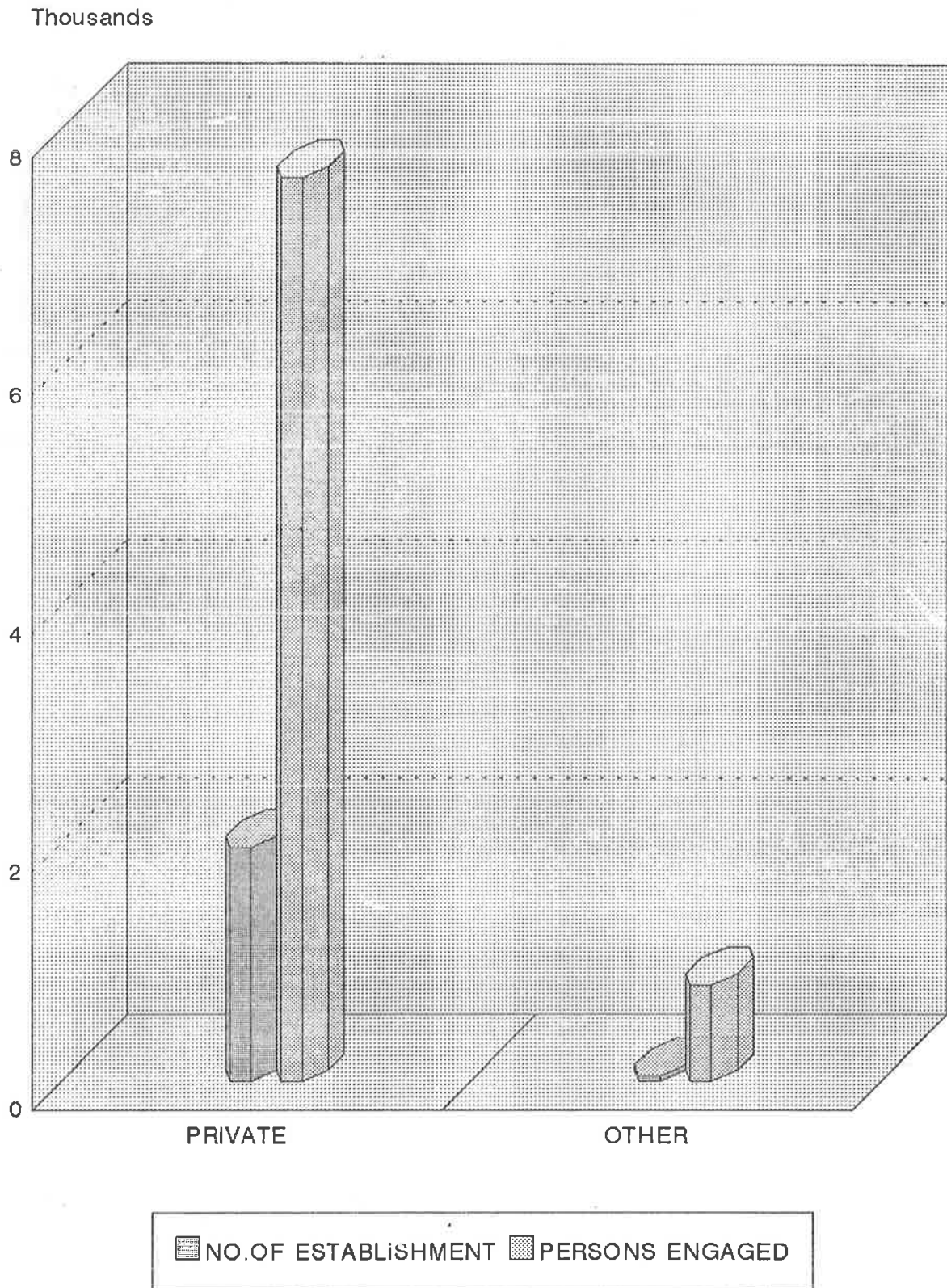
# NO.OF ESTABLISHMENTS BY INDUSTRY DIVISION RURAL SECTOR - 1995 MONARAGALA DISTRICT



# NO.OF ESTABLISHMENT & PERSONS ENGAGED BY TYPE OF SECTOR

## RURAL SECTOR - 1995

### MONARAGALA DISTRICT





L   
 පොත්  
 අංකය



**ජනලේඛන හා සංඛ්‍යාලේඛන දෙපාර්තමේන්තුව**  
**කෘෂිකාර්මික නොවන ආර්ථික කටයුතු ලැයිස්තුගත කිරීම - 1995**  
 (පියවීම ගොඩනැගිලි පදනා)

01. දැක්වීමකට:.....	<input type="checkbox"/>	<input type="checkbox"/>																																																
02. ප්‍රාදේශීය ලේකම් කොට්ඨාශය:.....	<input type="checkbox"/>	<input type="checkbox"/>																																																
03. ලැබීයේ කොට්ඨාශය:.....	<input type="checkbox"/>	<input type="checkbox"/>																																																
04. ග්‍රාම නිලධාරී කොට්ඨාශය:.....	<input type="checkbox"/>	<input type="checkbox"/>																																																
05. අංශය: 1. තාගර්ක 2. ග්‍රාමීය 3. වතු	<input type="checkbox"/>	<input type="checkbox"/>																																																
06. ම.න.ප./ ත.ප./ ප්‍රාදේශීය සභාව:.....	<input type="checkbox"/>	<input type="checkbox"/>																																																
07. ප්‍රාථමික ඒකකය තුළ පිහිටි තාගර්ක කොට්ඨාශ/ ගම්/ වතු/ල නම්:	<table border="1"> <tr><td>1</td><td>.....</td><td>7</td><td>.....</td></tr> <tr><td>2</td><td>.....</td><td>8</td><td>.....</td></tr> <tr><td>3</td><td>.....</td><td>9</td><td>.....</td></tr> <tr><td>4</td><td>.....</td><td>10</td><td>.....</td></tr> <tr><td>5</td><td>.....</td><td>11</td><td>.....</td></tr> <tr><td>6</td><td>.....</td><td>12</td><td>.....</td></tr> </table>	1	.....	7	.....	2	.....	8	.....	3	.....	9	.....	4	.....	10	.....	5	.....	11	.....	6	.....	12	.....	<table border="1"> <tr><td><input type="checkbox"/></td><td><input type="checkbox"/></td><td><input type="checkbox"/></td><td><input type="checkbox"/></td></tr> <tr><td><input type="checkbox"/></td><td><input type="checkbox"/></td><td><input type="checkbox"/></td><td><input type="checkbox"/></td></tr> <tr><td><input type="checkbox"/></td><td><input type="checkbox"/></td><td><input type="checkbox"/></td><td><input type="checkbox"/></td></tr> <tr><td><input type="checkbox"/></td><td><input type="checkbox"/></td><td><input type="checkbox"/></td><td><input type="checkbox"/></td></tr> <tr><td><input type="checkbox"/></td><td><input type="checkbox"/></td><td><input type="checkbox"/></td><td><input type="checkbox"/></td></tr> <tr><td><input type="checkbox"/></td><td><input type="checkbox"/></td><td><input type="checkbox"/></td><td><input type="checkbox"/></td></tr> </table>	<input type="checkbox"/>	<input type="checkbox"/>	<input type="checkbox"/>	<input type="checkbox"/>	<input type="checkbox"/>	<input type="checkbox"/>	<input type="checkbox"/>	<input type="checkbox"/>	<input type="checkbox"/>	<input type="checkbox"/>	<input type="checkbox"/>	<input type="checkbox"/>	<input type="checkbox"/>	<input type="checkbox"/>	<input type="checkbox"/>	<input type="checkbox"/>	<input type="checkbox"/>	<input type="checkbox"/>	<input type="checkbox"/>	<input type="checkbox"/>	<input type="checkbox"/>	<input type="checkbox"/>	<input type="checkbox"/>	<input type="checkbox"/>
1	.....	7	.....																																															
2	.....	8	.....																																															
3	.....	9	.....																																															
4	.....	10	.....																																															
5	.....	11	.....																																															
6	.....	12	.....																																															
<input type="checkbox"/>	<input type="checkbox"/>	<input type="checkbox"/>	<input type="checkbox"/>																																															
<input type="checkbox"/>	<input type="checkbox"/>	<input type="checkbox"/>	<input type="checkbox"/>																																															
<input type="checkbox"/>	<input type="checkbox"/>	<input type="checkbox"/>	<input type="checkbox"/>																																															
<input type="checkbox"/>	<input type="checkbox"/>	<input type="checkbox"/>	<input type="checkbox"/>																																															
<input type="checkbox"/>	<input type="checkbox"/>	<input type="checkbox"/>	<input type="checkbox"/>																																															
<input type="checkbox"/>	<input type="checkbox"/>	<input type="checkbox"/>	<input type="checkbox"/>																																															

විස්තරය	පිටු ගණන	ඒකක ගණන
1. නිවාස හා අනෙකුත් ගොඩනැගිලි (L)	<input type="checkbox"/>	<input type="checkbox"/>
2. කර්මාන්ත ගණන (L1)	<input type="checkbox"/>	<input type="checkbox"/>
3. වෙළෙඳ හා සේවා ආයතන	<input type="checkbox"/>	<input type="checkbox"/>
4. සාදන ලද ගොඩනැගිලි ගණන (L3)	<input type="checkbox"/>	<input type="checkbox"/>
5. සාමාන්‍යයෙන් පදිංචි පුද්ගලයින් ගණන	<input type="checkbox"/>	<input type="checkbox"/>

ලැයිස්තුගත කරන නිලධාරියාගේ නම: .....

අත්සන: .....

දිනය: .....

අධ්‍යක්ෂ නිලධාරියාගේ නම: .....

අත්සන: .....

දිනය: .....









L3     
 88  
 අංකය

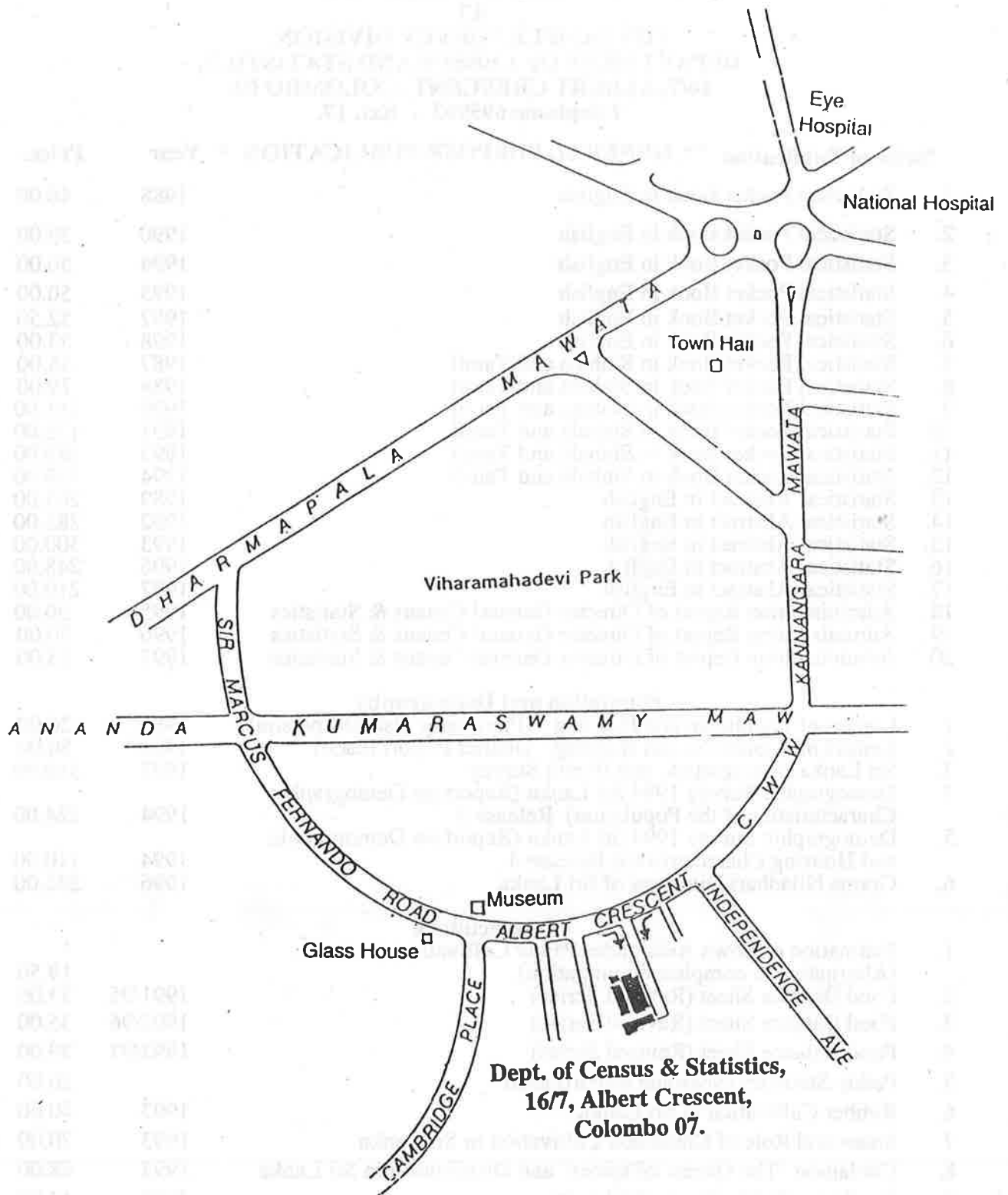
ජනලේඛන හා සංඛ්‍යාලේඛන දෙපාර්තමේන්තුව  
**කෘෂිකාර්මික නොවන ආර්ථික කටයුතු ලැයිස්තුගත කිරීම - 1995**  
 (ගොඩනැගිලි ඉදිකිරීම සඳහා - 1995 ජනවාරි 01 සිට ජූනි 30 දක්වා)

01. දිස්ත්‍රික්කය:.....    04. අංකය: 1. තාගම්ක 2. ග්‍රාමීය 3. වතු
02. ප්‍රාදේශීය ලේකම් කොට්ඨාශය:.....    05. ම.ත.ස./ත.ස./ප්‍රාදේශීය සභාව:.....
03. ග්‍රාම නිලධාරී කොට්ඨාශ අංකය:..... නම:.....

1	2	3	4	5	6	7	8
කාර්යාලයේ ප්‍රධානියා සඳහා	මෙම ජරාතයේ පිදුමේ ඉදිකිරීම් කටයුත්තකි ස්ථානය (එකම ජරාතයේ ඉදිකිරීම් කිහිපයක් පිදුමක් ඇති විටදී ප්‍රධාන ඉදිකිරීම් වර්ග ආන අනුපිළිවෙලින් ලියන්න.)	සු.ස.ක.ව.	1995 ජනවාරි 01 සිට ජූනි 30 තුළ කරන ලද වැඩ වෙනුවෙන් දරණ ලද (ඇස්තමේන්තු කරන ලද) මුද්‍රා (රු.පියල්)	ඉදිකිරීම් සඳහා මුදල් යොදවීමේ රටයේ -1 ප්‍රාදේශීය -2 වෙනත් -3 අදාළ සේවය ලියන්න.	පිහිටීම (මෙම ජරාතය ඔහුගේ හැකිම සඳහා ප්‍රමාණවත් විස්තර සඳහන් කරන්න.)	ඉදිකිරීම් කටයුතු කරන කාර්යාලයන් (ගොඩනැගිලි/අවිකිරීම) නව ලිපිනය හෝ දුරකථන අංකය	වෙනත් කාරුණි
1.							
2.							
3.							
1.							
2.							
3.							
1.							
2.							
3.							
1.							
2.							
3.							
1.							
2.							
3.							
1.							
2.							
3.							



## Location map of the sales counter of the Department of Census & Statistics



**PUBLICATIONS OF THE  
DEPARTMENT OF CENSUS AND STATISTICS  
AVAILABLE FOR SALES  
AT  
THE SAMPLE SURVEY DIVISION,  
DEPARTMENT OF CENSUS AND STATISTICS,  
16/7, ALBERT CRESCENT, COLOMBO 07.  
Telephone 695962 - Ext. 17.**

Name of Publication	** GENERAL PURPOSE PUBLICATION *	Year	Price
1. Statistical Pocket Book in English		1988	46.00
2. Statistical Pocket Book in English		1990	39.00
3. Statistical Pocket Book in English		1994	50.00
4. Statistical Pocket Book in English		1995	50.00
5. Statistical Pocket Book in English		1997	52.50
6. Statistical Pocket Book in English		1998	53.00
7. Statistical Pocket Book in Sinhala and Tamil		1987	46.00
8. Statistical Pocket Book in Sinhala and Tamil		1988	79.00
9. Statistical Pocket Book in Sinhala and Tamil		1990	161.00
10. Statistical Pocket Book in Sinhala and Tamil		1991	175.00
11. Statistical Pocket Book in Sinhala and Tamil		1993	189.00
12. Statistical Pocket Book in Sinhala and Tamil		1994	119.00
13. Statistical Abstract in English		1989	203.00
14. Statistical Abstract in English		1992	285.00
15. Statistical Abstract in English		1993	300.00
16. Statistical Abstract in English		1996	248.00
17. Statistical Abstract in English		1997	210.00
18. Administration Report of Director General Census & Statistics		1995	50.00
19. Administration Report of Director General Census & Statistics		1996	50.00
20. Administration Report of Director General Census & Statistics		1997	53.00
<b>Population and Demography</b>			
1. Census of Population and Housing - (Physically disabled person)		1981	20.00
2. Census of Population and Housing - District Report (each)		1981	50.00
3. Sri Lanka Demographic and Health Survey		1993	310.00
4. Demographic Survey 1994 Sri Lanka (Report on Demographic Characteristics of the Population) Release 3		1994	124.00
5. Demographic Survey 1994 Sri Lanka (Report on Demographic and Housing Characteristics) Release 4		1994	110.00
6. Grama Niladhari Divisions of Sri Lanka		1996	295.00
<b>Agriculture</b>			
1. Estimation of Sown Area under Paddy Cultivation (Alternative to complete enumeration)			19.50
2. Food Balance Sheet (Revised Series)		1991/95	33.00
3. Food Balance Sheet (Revised Series)		1992/96	35.00
4. Food Balance Sheet (Revised Series)		1992/97	39.00
5. Paddy Statistics (Seasonal Report) each			20.00
6. Rubber Cultivation in Sri Lanka		1993	40.00
7. States and Role of Cinnamon Cultivation in Sri Lanka		1993	70.00
8. Cardamon "The Queen of spices" and Distribution in Sri Lanka		1993	68.00
9. Rambutan Cultivation in Sri Lanka		1993	43.00
10. Sowing and Harvesting periods of Paddy Cultivation in Sri Lanka		1994	80.00
11. Agricultural Statistics of Sri Lanka		1995	97.00
12. Paddy Statistics of Sri Lanka		1952/96	
a) With diskette			241.00
b) Without diskette			191.00

**13. Agricultural crops and Livestock survey (Preliminary Reports)**

1.	Badulla	1992/93	80.00
2.	Colombo	1992/93	56.50
3.	Galle	1992/93	70.00
4.	Hambantota	1992/93	75.00
5.	Kalutara	1992/93	78.00
6.	Kegalle	1992/93	56.00
7.	Kurunegala	1992/93	160.00
8.	Mātara	1992/93	61.00
9.	Moneragala	1992/93	53.00
10.	Ratnapura	1992/93	85.00
11.	Mahaweli System 'H'	1993/94	40.00
12.	Puttalam	1993/94	71.00
13.	Polonnaruwa	1993/94	44.00
14.	Anuradhapura	1993/94	90.50

**Trade and Industry**

1.	Annual Survey of Industries	1991	30.00
2.	Annual Survey of Industries	1992/93/94 (each)	37.00
3.	Annual Survey of Industries	1995/96/97 (each)	39.00
4.	Annual survey of Industries (Interim Report)	1996	28.00
5.	Annual survey of construction Industries	1993/94	64.00

**National Accounts**

1.	National Accounts of Sri Lanka	1993	102.00
2.	National Accounts of Sri Lanka	1994	111.00
3.	National Accounts of Sri Lanka (Sinhala)	1994	123.00
4.	National Accounts of Sri Lanka (Sinhala)	1995	143.00
5.	National Accounts of Sri Lanka	1996	150.00
6.	National Accounts of Sri Lanka	1997	165.00

**Prices and Wages**

1.	Bulletin of Selected Retail Prices	1975/90	62.50
2.	Bulletin of Selected Retail Prices	1975/91	60.00
3.	Bulletin of Selected Retail Prices	1975/92	77.00
4.	Bulletin of Selected Retail Prices	1995	127.00
5.	Bulletin of Selected Retail Prices	1996	124.00
6.	Weekly Retail Prices - (Colombo City)		
	i. Bulletin No. II	1991/92	30.00
	ii. Bulletin No. III	1992/93	25.00
	iii. Bulletin No. IV	1993/94	43.50
	iv. Bulletin No. V	1995	38.00
	v. Bulletin No. VI	1996	43.00

**Survey Report**

1.	Quarterly Report of the Sri Lanka Labour Force Survey		
	i. Quarterly Report each	1993	40.00
	ii. Quarterly Report each	1994	45.00
	iii. 1st Quarter	1995	55.00
	iv. 2nd Quarter	1995	65.00
	v. 3rd and 4th Quarter each	1995	64.00
	vi. Quarterly Report (each)	1996	64.00
	vii. Quarterly Report (each)	1997	69.00
	viii. 1st Quarter	1998	70.00
2.	Sri Lanka Labour Force Survey (Sinhala)	1992	50.00
3.	Provincial Profile of Labour Force Sri Lanka	1993	122.00
4.	Provincial Profile of Labour Force Sri Lanka	1996	73.00

**Other Reports**

1.	Women and Men in Sri Lanka (Tamil)		133.00
2.	Changing Role of Women in Sri Lanka (English)		200.00
3.	Statistical Data Sheets 1996 (Sinhala, Tamil, English) (each)		5.00
4.	Listing of Non-agricultural Economic Activities (Rural Sector)	1995	29.00

Sl. No.	Particulars	Amount
1	...	...
2	...	...
3	...	...
4	...	...
5	...	...
6	...	...
7	...	...
8	...	...
9	...	...
10	...	...
11	...	...
12	...	...
13	...	...
14	...	...
15	...	...
16	...	...
17	...	...
18	...	...
19	...	...
20	...	...
21	...	...
22	...	...
23	...	...
24	...	...
25	...	...
26	...	...
27	...	...
28	...	...
29	...	...
30	...	...
31	...	...
32	...	...
33	...	...
34	...	...
35	...	...
36	...	...
37	...	...
38	...	...
39	...	...
40	...	...
41	...	...
42	...	...
43	...	...
44	...	...
45	...	...
46	...	...
47	...	...
48	...	...
49	...	...
50	...	...
51	...	...
52	...	...
53	...	...
54	...	...
55	...	...
56	...	...
57	...	...
58	...	...
59	...	...
60	...	...
61	...	...
62	...	...
63	...	...
64	...	...
65	...	...
66	...	...
67	...	...
68	...	...
69	...	...
70	...	...
71	...	...
72	...	...
73	...	...
74	...	...
75	...	...
76	...	...
77	...	...
78	...	...
79	...	...
80	...	...
81	...	...
82	...	...
83	...	...
84	...	...
85	...	...
86	...	...
87	...	...
88	...	...
89	...	...
90	...	...
91	...	...
92	...	...
93	...	...
94	...	...
95	...	...
96	...	...
97	...	...
98	...	...
99	...	...
100	...	...





ISBN 955 - 577 - 261 - 4

Printed by Department of Census & Statistics.