



SRI LANKA

**LISTING OF NON - AGRICULTURAL
ECONOMIC ACTIVITIES
1995**

Rural Sector

District Report

Colombo District

*department of census and statistics
ministry of finance and planning*

**LISTING OF NON - AGRICULTURAL
ECONOMIC ACTIVITIES
1995**

Rural Sector

District Report

Colombo District

LISTING OF NON-AGRICULTURAL
ECONOMIC ACTIVITIES
1992

Rural Sector

ISBN 955 - 577 - 247 - 9

District Report
Columbo District

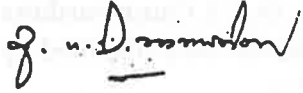
Published in 2000

PREFACE

The Department of Census and Statistics carried out a comprehensive listing of Non Agricultural Economic Activities in 1995 and covered rural areas of all provinces except Northern and Eastern provinces.

This report which includes basic Industrial statistics in the rural sector of the Colombo District is prepared to serve the immediate needs of the Grama Niladhari Division and Divisional Secretariat Divisional level data users. It is planned to publish the similar reports for all relevant Districts and the all island report.

I hope that the information presented in this document, though it is provisional will be of immense use to planners and policy makers.



A.G.W. Nanayakkara.
Director General.
Dept. of Census & Statistics,
No. 15/12,
Maitland Crescent,
Colombo 07.
27th July 1999.

ACKNOWLEDGEMENT

The listing operation of Non- Agricultural Economic Activities was undertaken by the Department of Census & Statistics which was funded by Institute of Construction Training and Development (ICTAD). This operation was planned mainly to establish a frame of building material industries and to ascertain the out put of the construction sector.

The planning, execution and successful completion of the entire listing operation were performed by the staff of Industry and Construction Division of the Department.

Enumerators who did the listing operation at the Grama Niladhari Division level, Statistical Investigators who were responsible for data collection and the District Statisticians / Statistical Officers who cordinated the activity are acknowledged.

The staff of the Data Processing Division and Statistical Investigators attached to some District offices who were engaged in computer data entry activities are much appreciated.

Special thanks are due to District Secretary and Divisional Secretaries of the District whose fullest co-operation was very vital to the successful completion of this operation.

Preparation of this publication was done by Mr. D.S.S.Gunawardana Statistical Officer using Apple Mackintosh and the statistical tables were obtained by Mr. R.D.N. Premawansa Statistical Investigator using SPSS PC+.

Acknowledgements are also due to Mr. K. D. Siripala, Deputy Director and his staff for printing this report within a short period.

The co-operation given by the respondents is also much appreciated.

CONTENTS

	PAGE
1. PREFACE	
2. ACKNOWLEDGEMENT	
3. CONTENTS	
A. INTRODUCTION	1
B. COVERAGE	1
C. LISTING OPERATION	2
D. PREPARATION OF TABLES	2
4. TABLES	5 - 23
5. CHARTS	24 - 29
6. ANNEX	30
Table Nos:	
1. No. of Establishments & persons engaged by Divisional Secretary Division 1995.	5
2. No. of Establishments & persons engaged by Divisional Secretary Division & by Sector 1995.	5
3. No. of Establishments & persons engaged by Divisional Secretary Division & by Size Class 1995.	6
4. No. of Establishments & persons engaged by Major Industry Division (ISIC 1 digit level) 1995.	6
5. No. of Establishments & persons engaged by Industry Division. (ISIC 2 digit level) 1995.	7
6. No. of Establishments & persons engaged by Major Industry Group (ISIC 3 digit level) 1995.	8
7. No. of Establishments & persons engaged by Industry Group (ISIC 4 digit level) 1995.	9

Table Nos:	Page
8. No. of Establishments & persons engaged by Divisional Secretary Division & Major Industry Division (ISIC 1 digit level) 1995.	11
9. No. of Establishments & persons engaged by Divisional Secretary Division & Industry Division (ISIC 2 digit level) 1995.	12
10. Distribution of Establishments & persons engaged by Divisional Secretary Division & persons engaged size class 1995.	15

Chart Nos:

1. No. of Establishments by Divisional Secretary Division 1995.	24
2. Persons engaged by Divisional Secretary Division 1995.	25
3. No. of Establishments by persons engaged size class 1995.	26
4. Persons engaged by size class 1995.	27
5. No. of Establishments by Industry Division 1995.	28
6. No. of Establishments & persons engaged by Type of Sector 1995.	29

Listing of Non Agricultural Economic Activities - 1995

A. Introduction

Listing of Non Agricultural Economic Activities was conducted in stage is in Rural Sector covering all districts except the districts in Northern & Eastern Provinces. The main objective of this exercise was to identify the building material producing units and to compile the value of construction output of the housing sector as required by ICTAD. However, in order to make the exercise complete all non agricultural activities were enumerated.

A Grama Niladhari (GN) Division or a part of GN Division was considered as an enumeration area and enumerators were appointed by the Divisional Secretary of the area. The enumerator prepared a list of non agricultural economic activities by visiting each and every building in the enumeration area under the supervision of District Statistical Staff and the Head Office Staff.

B. Coverage

i. Economic Activities

The following Economic Activities were covered by the listing of non-agricultural economic activities.

1. Mining and Quarrying
2. Manufacturing
3. Electricity, Gas production & Water supply
4. Trade, Hotels and restaurants
5. Transport, Communication & Storage
6. Finance, Insurance, Real estate and business services
7. Public Administration, Education & Health activities
8. Community and Social Service & Private service activities
9. Construction

ii Area

This listing operation covered only the rural sector in Sri Lanka and did not cover:

1. Northern and Eastern Provinces
2. All Municipal Councils and Urban Councils
3. Areas covered by the Board of Investment

C. Listing Operation

The recruited enumerators were given a two days training by panel of trainers selected and trained for that purpose in advance. An enumerator is assigned to each enumeration area which is usually a GN Division . When the GN Division is spread over a larger area or has a large number of housing units / buildings, the GN Division is divided into two enumeration areas.

The enumerators were asked to complete one line in the listing form (L) for each housing unit / building with the following information.

1. Name of the owner proprietor of the enterprise/chief occupant
2. Postal address
3. Nature of the unit
4. Type of Economic activity
5. Type of construction activity
6. Numbe of residents

If the housing unit/building was having the activities on

1. Mining and quarrying
2. Manufacturing
3. Electricity, Gas and Water

The following further information is inserted to the L1 form.

1. Economic Organization of the Establishment
2. Type of ownership of the establishment
3. Type of Industry
4. Major Products produced by the establishment
5. Persons engaged in the industry

Further if the housing units/building had done some construction activities during the reference period that too were included in an another form called L 3 with the following additional information.

1. Type of the Construction Activity done during the period from January to June in 1995
2. Expenditure/Estimated expenditure incurred during the period
3. Source of funds

D. Preparation of Tables

The information collected by the enumerators through L1 form was checked for completeness and data coded by the range Statistical Investigator under the supervision of the District Statistician/Statistical Officer. When two major products were given for an establishment, but products were coded using the information available in column 6 & 7. However the code for the 1st product is considered as the code relevant for the whole establishment in the tabulation procedure.

In most of the districts, data entry was done at the District Office itself using the personal computers available there. However L1 forms relevant to few districts were fed to the computer by the Data Processing Division of the Department.

The tabulation was done by the Industry and Construction Division using the SPSS PC+ package. The tables consist number of establishments and the persons engaged by Divisional Secretary Division and ISIC two digit level (Revision 3) in one set and ISIC 4 digit level (Revision 03) at district level in the other set. In cases when it is felt that the individual identification is disclosed, the information is either combined with another category or suppressed.

The first part of the book is devoted to the study of the history of the subject. It is a very interesting and informative account of the development of the subject from its early beginnings to the present day. The author has done a great deal of research and has brought together a wealth of material which is both interesting and valuable. The book is written in a clear and concise style and is easy to read. It is a very good introduction to the subject and is highly recommended for all those who are interested in the history of the subject.

The second part of the book is devoted to the study of the present state of the subject. It is a very interesting and informative account of the current state of the subject and the progress that has been made in the various branches of the subject. The author has done a great deal of research and has brought together a wealth of material which is both interesting and valuable. The book is written in a clear and concise style and is easy to read. It is a very good introduction to the subject and is highly recommended for all those who are interested in the present state of the subject.

The third part of the book is devoted to the study of the future of the subject. It is a very interesting and informative account of the future of the subject and the progress that is expected to be made in the various branches of the subject. The author has done a great deal of research and has brought together a wealth of material which is both interesting and valuable. The book is written in a clear and concise style and is easy to read. It is a very good introduction to the subject and is highly recommended for all those who are interested in the future of the subject.

TABLE 1: NO. OF ESTABLISHMENT* & PERSONS ENGAGED BY DIVISIONAL SECRETARY DIVISION
COLOMBO DISTRICT - RURAL SECTOR - 1995

D. S. DIVISION	NO. OF ESTABLISHMENTS	PERSONS ENGAGED
HANWELLA.....	1,493	6,557
HOMAGAMA.....	1,476	14,728
KADUWELA.....	293	5,019
KESBEWA.....	1,354	17,006
KOLONNANA.....	513	3,638
MAHARAGAMA.....	722	11,764
TOTAL.....	5,851	58,712

* - MINING & QUARRYING AND MANUFACTURING

TABLE 2: NO. OF ESTABLISHMENT* & PERSONS ENGAGED BY DIVISIONAL SECRETARY DIVISION & BY SECTOR
COLOMBO DISTRICT - RURAL SECTOR - 1995

D. S. DIVISION	TYPE OF SECTOR			
	PRIVATE **		OTHER	
	NO. OF ESTABLISHMENTS	PERSONS ENGAGED	NO. OF ESTABLISHMENTS	PERSONS ENGAGED
HANWELLA.....	1,486	5,790	7	767
HOMAGAMA.....	1,470	13,441	6	1,287
KADUWELA.....	288	3,693	5	1,326
KESBEWA.....	1,349	16,106	5	900
KOLONNANA.....	512	3,557	1	81
MAHARAGAMA.....	718	11,145	4	619
TOTAL.....	5,823	53,732	28	4,980

* - MINING & QUARRYING AND MANUFACTURING

** - EXCLUDING B.O.I.

TABLE 3: NO. OF ESTABLISHMENT* & PERSONS ENGAGED BY DIVISIONAL SECRETARY DIVISION & BY SIZE CLASS
COLOMBO DISTRICT - RURAL SECTOR - 1995

D.S.DIVISION	PERSONS ENGAGED SIZE CLASS					
	1 - 4		5 - 14		15 & ABOVE	
	NO. OF ESTABLISHMENTS	PERSONS ENGAGED	NO. OF ESTABLISHMENTS	PERSONS ENGAGED	NO. OF ESTABLISHMENTS	PERSONS ENGAGED
HANWELLA.....	1,241	2,114	208	1,504	44	2,939
HOMAGAMA.....	1,132	2,106	228	1,635	116	10,987
KADUWELA.....	207	418	61	406	25	4,195
KESBWA.....	1,029	1,974	196	1,376	129	13,656
KOLONNAWA.....	380	775	88	605	45	2,258
MAHARAGAMA.....	551	1,084	114	779	57	9,901
TOTAL.....	4,540	8,471	895	6,305	416	43,936

* - MINING & QUARRYING AND MANUFACTURING

TABLE 4: NO. OF ESTABLISHMENT* & PERSONS ENGAGED BY MAJOR INDUSTRY DIVISION** (ISIC 1 DIGIT LEVEL)
COLOMBO DISTRICT - RURAL SECTOR - 1995

MAJOR INDUSTRY DIVISION	NO. OF ESTABLISHMENTS	PERSONS ENGAGED
C MINING & QUARRYING.....	288	1,993
D MANUFACTURING.....	5,563	56,719
TOTAL.....	5,851	58,712

* - MINING & QUARRYING AND MANUFACTURING

** - ISIC REVISION 03

TABLE 5:NO.OF ESTABLISHMENT* & PERSONS ENGAGED BY INDUSTRY DIVISION** (ISIC 2 DIGIT LEVEL)
COLOMBO DISTRICT - RURAL SECTOR - 1995

INDUSTRY DIVISION	NO.OF ESTABLISHMENTS	PERSONS ENGAGED
14 OTHER MINING & QUARRYING.....	288	1,993
15 FOOD PRODUCTS & BEVERAGES.....	823	6,008
16 TOBACCO PRODUCTS.....	143	379
17 TEXTILES.....	365	3,459
18 WEARING APPEREL DRESSING & DYING OF PUR.....	1,213	20,031
19 TRAINING & DRESSING OF LEATHER, LEATHER GOODS & FOOTWEAR...	183	1,209
20 WOOD & WOOD PRODUCTS, EXCEPT FURNITURE.....	684	5,642
21 PAPER & PAPER PRODUCTS.....	104	1,466
22 PUBLISHING,PRINTING & REPRODUCTION OF RECORDED MEDIA.....	44	303
24 CHEMICALS & CHEMICAL PRODUCTS.....	80	859
25 RUBBER & PLASTICS PRODUCTS.....	531	3,745
26 OTHER NON-METALIC MINERAL PRODUCTS.....	648	3,338
27 BASIC METAL INDUSTRIES.....	14	1,381
28 FABRICATED METAL PRODUCTS,EXCEPT MACHINERY & EQUIPMENT.....	346	1,272
29 MACHINERY & EQUIPMENT N.E.C.....	8	73
31 BLECTRICAL MACHINERY & APPARATUS N.E.C.....	16	515
32 RADIO,TELEVISION & COMMUNICATION EQUIPMENT & APPARATUS.....	7	21
34 MOTOR VEHICLES,TRAILERS & SEMI-TRAILERS.....	18	1,127
35 OTHER TRANSPORT EQUIPMENT.....	3	281
36 MANU.OF FURNITURE, MANUFACTURING N.E.C.....	291	3,914
99 OTHER PRODUCT.....	42	1,696
TOTAL.....	5,851	58,712

* - MINING & QUARRYING AND MANUFACTURING

** - ISIC REVISION 03

TABLE 6: NO. OF ESTABLISHMENT* & PERSONS ENGAGED BY MAJOR INDUSTRY GROUP** (ISIC 3 DIGIT LEVEL)
COLOMBO DISTRICT - RURAL SECTOR - 1995

MAJOR INDUSTRY GROUP	NO. OF ESTABLISHMENTS	PERSONS ENGAGED
141 QUARRYING OF STONE, SAND & CLAY.....	284	1,966
142 MINING & QUARRYING N.B.C.....	4	27
151 WHEAT, FISH, FRUIT, VEGETABLE, OILS & FATS PRODUCTS.....	48	223
152 MANU. OF DAIRY PRODUCTS.....	76	252
153 GRAIN MILL, STARCHES & STARCH PRODUCTS, ANIMAL FEEDS.....	147	230
154 OTHER FOOD PRODUCTS.....	534	4,180
155 BEVERAGES.....	18	1,123
160 TOBACCO PRODUCTS.....	143	379
171 SPINNING, WEAVING & FINISHING OF TEXTILES.....	127	2,550
172 OTHER TEXTILES.....	238	909
181 WEARING APPAREL, EXCEPT FUR APPAREL.....	1,213	20,031
191 TANNING & LEATHER.....	40	265
192 MANU. OF FOOTWEAR.....	143	944
201 SAWMILLING & PLANING OF WOOD.....	138	767
202 MANU. OF PRODUCTS OF WOOD, CORK, STRAW & PLAITING MATERIALS..	546	4,875
210 PAPER & PAPER PRODUCTS.....	104	1,466
221 PUBLISHING.....	30	236
222 PRINTING & SERVICE ACTIVITIES RELATED TO PRINTING.....	14	67
242 OTHER CHEMICALS PRODUCTS.....	80	859
251 RUBBER PRODUCTS.....	476	2,006
252 PLASTIC PRODUCTS.....	55	1,739
261 GLASS & GLASS PRODUCTS.....	12	146
269 NON-METALLIC MINERAL PRODUCTS N.B.C.....	636	3,192
271 BASIC IRON & STEEL.....	4	1,053
272 BASIC FERROUS & NON-FERROUS.....	7	314
273 CASTING OF METALS.....	3	14
281 STRUCTURAL METAL PRODUCTS.....	231	880
289 OTHER FABRICATED METAL PRODUCTS.....	115	392
291 GENERAL PURPOSE MACHINERY.....	3	29
293 DOMESTIC APPLIANCES N.B.C.....	5	44
312 MANU. OF ELECTRICITY DISTRIBUTION & CONTROL APPARATUS.....	5	60
315 ELECTRIC CLAMPS & LIGHTING EQUIPMENT.....	5	131
319 OTHER ELECTRICAL EQUIPMENT N.B.C.....	6	324
323 TELEVISION & RADIO RECEIVERS & ASSOCIATED.....	7	21
342 MANU. OF BODIES (COACHWORK) FOR MOTOR VEHICLES.....	10	1,085
343 PARTS & ACCESSORIES FOR MOTOR VEHICLES & ENGINES.....	8	42
359 MANU. OF TRANSPORT EQUIPMENT N.B.C.....	3	281
361 MANU. OF FURNITURE.....	146	531
369 MANUFACTURING N.B.C.....	145	3,383
999 OTHER PRODUCT.....	42	1,696
TOTAL.....	5,851	58,712

* - MINING & QUARRYING AND MANUFACTURING

** - ISIC REVISION 03

TABLE 7: NO. OF ESTABLISHMENT* & PERSONS ENGAGED BY INDUSTRY GROUP** (ISIC 4 DIGIT LEVEL)
COLOMBO DISTRICT - RURAL SECTOR - 1995

INDUSTRY GROUP	NO. OF ESTABLISHMENTS	PERSONS ENGAGED
1410 QUARRYING OF STONE, SAND & CLAY.....	284	1,966
1429 OTHER MINING & QUARRYING N.E.C.....	4	27
1511 PRODU., PROCESSING & PRESERVING OF MEAT & MEAT PRODUCTS...	30	80
1513 PROCESSING & PRESERVING OF FRUIT & VEGETABLES.....	15	105
1514 MANU. OF VEGETABLES & ANIMAL OILS & FATS.....	3	38
1520 DAIRY PRODUCTS.....	76	252
1531 GRAIN MILL PRODUCTS.....	147	230
1541 BAKERY PRODUCTS.....	347	2,540
1542 MANUFACTURE OF SUGER.....	14	42
1543 COCOA, CHOCOLATE & SUGER CONFECTIONERY.....	55	314
1544 MACARONI, NOODLES, COUSCOUS & SIMILAR PRODUCTS.....	18	134
1549 OTHER FOOD PRODUCTS N.E.C.....	100	1,150
1554 SOFT DRINKS & MINERAL WATERS.....	18	1,123
1600 TOBACCO PRODUCTS.....	143	379
1711 PREPARATION & SPINNING OF TEXTILE FIBRES.....	82	2,112
1712 FINISHING OF TEXTILES.....	45	438
1721 MADE-UP TEXTILE ARTICLES, EXCEPT APPAREL.....	204	792
1722 CARPETS & RUGS.....	14	36
1723 CORDAGE, ROPE, TWINE & NETTING.....	9	40
1729 OTHER TEXTILES N.E.C.....	11	41
1810 WEARING APPAREL, EXCEPT FUR APPAREL.....	1,213	20,031
1911 TANNING & DRESSING OF LEATHER.....	3	59
1912 MANU. OF LEATHER GOODS.....	37	206
1920 FOOTWEAR.....	143	944
2010 SAWMILLING & PLANING OF WOOD.....	138	767
2021 VENEER SHEETS, PLYWOOD, LAMINBOARD, PARTICLE BOARD.....	13	258
2022 BUILDERS CARPENTRY & JOINERY.....	136	436
2023 WOODEN CONTAINERS.....	23	167
2029 OTHER PRODUCTS OF WOOD.....	374	4,014
2101 PULP, PAPER & PAPERBOARD.....	12	95
2102 CORRUGATED PAPER & PAPERBOARD & CONTAINERS.....	25	355
2109 OTHER ARTICLES OF PAPER & PAPERBOARD.....	67	1,016
2212 PUBLISHING OF NEWSPAPER, JOURNALS & PERIODICALS.....	5	82
2219 OTHER PUBLISHING.....	25	154
2221 PRINTING.....	8	17
2222 SERVICE ACTIVITIES RELATED TO PRINTING.....	6	50
2422 PAINTS, VARNISHES & SIMILAR COATINGS, PRINTING INK.....	12	116
2423 PHARMACEUTICALS, MEDICINAL CHEMICALS & BOTANICAL.....	18	161
2424 SOAP, CLEANING & POLISHING PREPARATIONS, PERFUMES.....	10	441
2429 OTHER CHEMICAL PRODUCTS N.E.C.....	40	141
2511 RUBBER TYRES & TUBES, REBUILDING OF RUBBER TYRES.....	8	356
2519 OTHER RUBBER PRODUCTS.....	468	1,650
2520 PLASTIC PRODUCTS.....	55	1,739
2610 GLASS & GLASS PRODUCTS.....	12	146
2691 NON-STRUCTURAL NON- REFRACTORY CERAMIC WARE.....	10	750
2692 REFRACTORY CERAMIC PRODUCTS.....	11	59
2693 STRUCTURAL NONO-REFRACTORY CLAY & CERAMIC PRODUCTS.....	241	1,134
2694 CEMENT, LIMB & PLASTER.....	21	91
2695 ARTICLES OF CONCRETE, CEMENT & PLASTER.....	333	1,041
2696 CUTTING, SHAPING & FINISHING OF STONE.....	17	107
2699 OTHER NON-METALIC MINERAL PRODUCTS N.E.C.....	3	10
2710 BASIC IRON & STEEL.....	4	1,053
2720 BASIC PRECIOUS & NON-FERROUS METAL.....	7	314
2731 CASTING OF IRON & STEEL.....	3	14
2811 STRUCTURAL METAL PRODUCTS.....	227	748
2812 TANKS, RESERVOIRS & CONTAINERS OF METAL.....	4	132

(continued)

* - MINING & QUARRYING AND MANUFACTURING

** - ISIC REVISION 03

TABLE 7: NO. OF ESTABLISHMENT* & PERSONS ENGAGED BY INDUSTRY GROUP** (ISIC 4 DIGIT LEVEL)
COLOMBO DISTRICT - RURAL SECTOR - 1995

INDUSTRY GROUP	NO. OF ESTABLISHMENTS	PERSONS ENGAGED
2893 CUTLERY, HAND TOOLS & GENERAL HARDWARE.....	56	111
2899 OTHER FABRICATED METAL PRODUCTS.....	59	281
2911 ENGINES & TURBINES, EXCEPT AIRCRAFT, VEHICLE ENGINE.....	3	29
2930 DOMESTIC APPLIANCES N.E.C.....	5	44
3120 MANU. OF ELECTRICITY DISTRIBUTION & CONTROL APPARATUS.....	5	60
3150 ELECTRIC LAMPS & LIGHTING EQUIPMENTS.....	5	131
3190 OTHER ELECTRICAL EQUIPMENT N.E.C.....	6	324
3230 TELEVISION & RADIO RECEIVERS, SOUND OR VIDEO RECORDING....	7	21
3420 BODIES (COACHWORK) FOR MOTOR VEHICLES.....	10	1,085
3430 PARTS & ACCESSORIES FOR MOTOR VEHICLES & THEIR ENGINES...	8	42
3591 MOTORCYCLES.....	3	281
3610 FURNITURE.....	146	531
3691 JEWELLERY & RELATED ARTICLES.....	75	1,443
3694 GAMES & TOYS.....	11	952
3699 OTHER MANUFACTURING N.E.C.....	59	988
9999 OTHER PRODUCT.....	42	1,696
TOTAL.....	5,851	58,712

* - MINING & QUARRYING AND MANUFACTURING

** - ISIC REVISION 03

TABLE 8: NO. OF ESTABLISHMENT* & PERSONS ENGAGED BY DIVISIONAL SECRETARY DIVISION & MAJOR INDUSTRY DIVISION (ISIC 1 DIGIT LEVEL)
COLOMBO DISTRICT - RURAL SECTOR - 1995**

D.S. DIVISION & MAJOR INDUSTRY DIVISION	NO. OF ESTABLISHMENTS	PERSONS ENGAGED
HANWELLA		
C MINING & QUARRYING.....	155	953
D MANUFACTURING.....	1,338	5,604
HOMAGAMA		
C MINING & QUARRYING.....	95	816
D MANUFACTURING.....	1,381	13,912
KADUWELA		
C MINING & QUARRYING.....	26	132
D MANUFACTURING.....	267	4,887
KESSEWA		
C MINING & QUARRYING.....	1	16
D MANUFACTURING.....	1,353	16,990
KOLONNAWA		
C MINING & QUARRYING.....	8	41
D MANUFACTURING.....	505	3,597
MAHARAGAMA		
C MINING & QUARRYING.....	3	35
D MANUFACTURING.....	719	11,729
TOTAL.....	5,851	58,712

* - MINING & QUARRYING AND MANUFACTURING

** - ISIC REVISION 03

TABLE 9: NO. OF ESTABLISHMENT* & PERSONS ENGAGED BY DIVISIONAL SECRETARY DIVISION &
INDUSTRY DIVISION** (ISIC 2 DIGIT LEVEL)
COLOMBO DISTRICT - RURAL SECTOR - 1995

D.S.DIVISION & INDUSTRY DIVISION	NO. OF ESTABLISHMENTS	PERSONS ENGAGED
HANWELLA		
14 OTHER MINING & QUARRYING.....	155	953
15 FOOD PRODUCTS & BEVERAGES.....	233	594
16 TOBACCO PRODUCTS.....	127	197
17 TEXTILES.....	55	469
18 WEARING APPEREL DRESSING & DYING OF FUR.....	140	1,934
19 TRAINING & DRESSING OF LEATHER, LEATHER GOODS & FOOTWEAR.	13	75
20 WOOD & WOOD PRODUCTS, EXCEPT FURNITURE.....	102	347
21 PAPER & PAPER PRODUCTS.....	13	48
24 CHEMICALS & CHEMICAL PRODUCTS.....	3	6
25 RUBBER & PLASTICS PRODUCTS.....	366	928
26 OTHER NON-METALIC MINERAL PRODUCTS.....	161	647
28 FABRICATED METAL PRODUCTS, EXCEPT MACHINERY & EQUIPMENT...	65	111
31 ELECTRICAL MACHINERY & APPARATUS N.E.C.....	3	14
34 MOTOR VEHICLES, TRAILERS & SEMI-TRAILERS.....	3	7
36 MANU. OF FURNITURE, MANUFACTURING N.E.C.....	45	144
99 OTHER PRODUCT.....	9	83
HOMAGAMA		
14 OTHER MINING & QUARRYING.....	95	816
15 FOOD PRODUCTS & BEVERAGES.....	238	923
16 TOBACCO PRODUCTS.....	8	13
17 TEXTILES.....	126	887
18 WEARING APPEREL DRESSING & DYING OF FUR.....	328	3,868
19 TRAINING & DRESSING OF LEATHER, LEATHER GOODS & FOOTWEAR.	81	409
20 WOOD & WOOD PRODUCTS, EXCEPT FURNITURE.....	154	759
21 PAPER & PAPER PRODUCTS.....	32	970
22 PUBLISHING, PRINTING & REPRODUCTION OF RECORDED MEDIA.....	4	40
24 CHEMICALS & CHEMICAL PRODUCTS.....	29	272
25 RUBBER & PLASTICS PRODUCTS.....	73	603
26 OTHER NON-METALIC MINERAL PRODUCTS.....	172	1,110
28 FABRICATED METAL PRODUCTS, EXCEPT MACHINERY & EQUIPMENT...	59	391
31 ELECTRICAL MACHINERY & APPARATUS N.E.C.....	4	337
34 MOTOR VEHICLES, TRAILERS & SEMI-TRAILERS.....	6	1,032
36 MANU. OF FURNITURE, MANUFACTURING N.E.C.....	51	1,267
99 OTHER PRODUCT.....	16	1,031
KADUWELA		
14 OTHER MINING & QUARRYING.....	26	132
15 FOOD PRODUCTS & BEVERAGES.....	56	1,208
17 TEXTILES.....	10	390
18 WEARING APPEREL DRESSING & DYING OF FUR.....	38	1,141
19 TRAINING & DRESSING OF LEATHER, LEATHER GOODS & FOOTWEAR.	7	229

* - MINING & QUARRYING AND MANUFACTURING

** - ISIC REVISION 03

(continued)

TABLE 9: NO. OF ESTABLISHMENT* & PERSONS ENGAGED BY DIVISIONAL SECRETARY DIVISION &
INDUSTRY DIVISION** (ISIC 2 DIGIT LEVEL)
COLOMBO DISTRICT - RURAL SECTOR - 1995

D.S. DIVISION & INDUSTRY DIVISION	NO. OF ESTABLISHMENTS	PERSONS ENGAGED
20 WOOD & WOOD PRODUCTS, EXCEPT FURNITURE.....	30	122
24 CHEMICALS & CHEMICAL PRODUCTS.....	4	60
25 RUBBER & PLASTICS PRODUCTS.....	11	288
26 OTHER NON-METALIC MINERAL PRODUCTS.....	46	147
27 BASIC METAL INDUSTRIES.....	7	1,030
28 FABRICATED METAL PRODUCTS, EXCEPT MACHINERY & EQUIPMENT...	26	111
34 MOTOR VEHICLES, TRAILERS & SEMI-TRAILERS.....	5	25
36 MANU. OF FURNITURE, MANUFACTURING N.E.C.....	17	51
99 OTHER PRODUCT.....	10	85
KESBEWA		
15 FOOD PRODUCTS & BEVERAGES.....	155	1,060
16 TOBACCO PRODUCTS.....	4	7
17 TEXTILES.....	80	553
18 WEARING APPEREL DRESSING & DYING OF FUR.....	320	6,202
19 TRAINING & DRESSING OF LEATHER. LEATHER GOODS & FOOTWEAR.	35	279
20 WOOD & WOOD PRODUCTS, EXCEPT FURNITURE.....	277	3,012
21 PAPER & PAPER PRODUCTS.....	30	296
22 PUBLISHING, PRINTING & REPRODUCTION OF RECORDED MEDIA....	23	176
24 CHEMICALS & CHEMICAL PRODUCTS.....	27	438
25 RUBBER & PLASTICS PRODUCTS.....	46	749
26 OTHER NON-METALIC MINERAL PRODUCTS.....	117	763
27 BASIC METAL INDUSTRIES.....	5	345
28 FABRICATED METAL PRODUCTS, EXCEPT MACHINERY & EQUIPMENT...	84	270
31 ELECTRICAL MACHINERY & APPARATUS N.E.C.....	5	29
32 RADIO, TELEVISION & COMMUNICATION EQUIPMENT & APPARATUS....	3	15
36 MANU. OF FURNITURE, MANUFACTURING N.E.C.....	135	2,104
99 OTHER PRODUCT.....	8	708
KOLONNANA		
14 OTHER MINING & QUARRYING.....	8	41
15 FOOD PRODUCTS & BEVERAGES.....	77	636
17 TEXTILES.....	11	166
18 WEARING APPEREL DRESSING & DYING OF FUR.....	88	1,070
19 TRAINING & DRESSING OF LEATHER, LEATHER GOODS & FOOTWEAR.	26	135
20 WOOD & WOOD PRODUCTS, EXCEPT FURNITURE.....	64	380
21 PAPER & PAPER PRODUCTS.....	17	43
24 CHEMICALS & CHEMICAL PRODUCTS.....	9	59
25 RUBBER & PLASTICS PRODUCTS.....	11	106
26 OTHER NON-METALIC MINERAL PRODUCTS.....	115	432

(continued)

* - MINING & QUARRYING AND MANUFACTURING

** - ISIC REVISION 03

TABLE 9: NO. OF ESTABLISHMENT* & PERSONS ENGAED BY DIVISIONAL SECRETARY DIVISION & INDUSTRY DIVISION** (ISIC 2 DIGIT LEVEL)
COLOMBO DISTRICT - RURAL SECTOR - 1995

D.S.DIVISION & INDUSTRY DIVISION	NO. OF ESTABLISHMENTS	PERSONS ENGAGED
28 FABRICATED METAL PRODUCTS, EXCEPT MACHINERY & EQUIPMENT...	50	190
34 MOTOR VEHICLES, TRAILERS & SEMI-TRAILERS.....	4	63
36 MANU. OF FURNITURE, MANUFACTURING N.E.C.....	23	257
99 OTHER PRODUCT.....	10	60
MAHARAGANA		
14 OTHER MINING & QUARRYING.....	3	35
15 FOOD PRODUCTS & BEVERAGES.....	64	1,587
17 TEXTILES.....	83	994
18 WEARING APPEREL DRESSING & DYING OF PUR.....	299	5,816
19 TRAINING & DRESSING OF LEATHER, LEATHER GOODS & FOOTWEAR.	21	82
20 WOOD & WOOD PRODUCTS, EXCEPT FURNITURE.....	57	1,022
21 PAPER & PAPER PRODUCTS.....	10	105
22 PUBLISHING, PRINTING & REPRODUCTION OF RECORDED MEDIA.....	15	85
24 CHEMICALS & CHEMICAL PRODUCTS.....	8	24
25 RUBBER & PLASTICS PRODUCTS.....	24	1,071
26 OTHER NON-METALIC MINERAL PRODUCTS.....	37	239
28 FABRICATED METAL PRODUCTS, EXCEPT MACHINERY & EQUIPMENT...	62	199
29 MACHINERY & EQUIPMENT N.E.C.....	4	19
36 MANU. OF FURNITURE, MANUFACTURING N.E.C.....	20	91
99 OTHER PRODUCT.....	15	395
TOTAL.....	5,851	58,712

* - MINING & QUARRYING AND MANUFACTURING

** - ISIC REVISION 03

TABLE 10: DISTRIBUTION OF ESTABLISHMENT* & PERSONS ENGAGED BY DIVISIONAL
SECRETARY DIVISION & PERSONS ENGAGED SIZE CLASS
COLONBO DISTRICT - RURAL SECTOR - 1995

D.S.DIVISION & INDUSTRY DIVISION	NO.OF ESTABLISHMENTS
HANWELLA	
14 OTHER MINING & QUARRYING	
1 - 4.....	55
5 - 14.....	91
15 & ABOVE.....	9
15 FOOD PRODUCTS & BEVERAGES	
1 - 4.....	215
5 - 14.....	16
15 & ABOVE.....	2
16 TOBACCO PRODUCTS	
1 - 4.....	118
5 - 14.....	9
17 TEXTILES	
1 - 4.....	33
5 - 14.....	14
15 & ABOVE.....	8
18 WEARING APPREL DRESSING & DYEING OF FUR	
1 - 4.....	128
5 - 14.....	8
15 & ABOVE.....	4
19 TRAINING & DRESSING OF LEATHER, LEATHER GOODS & FOOTWEAR	
1 - 4.....	10
5 - 14.....	1
15 & ABOVE.....	2
20 WOOD & WOOD PRODUCTS, EXCEPT FURNITURE	
1 - 4.....	87
5 - 14.....	12
15 & ABOVE.....	3
21 PAPER & PAPER PRODUCTS	
1 - 4.....	11
5 - 14.....	1
15 & ABOVE.....	1
22 PUBLISHING, PRINTING & REPRODUCTION OF RECORDED MEDIA	
1 - 4.....	1
24 CHEMICALS & CHEMICAL PRODUCTS	
1 - 4.....	3
25 RUBBER & PLASTICS PRODUCTS	
1 - 4.....	333
5 - 14.....	22
15 & ABOVE.....	11
26 OTHER NON-METALIC MINERAL PRODUCTS	
1 - 4.....	136
5 - 14.....	24
15 & ABOVE.....	1
28 FABRICATED METAL PRODUCTS, EXCEPT MACHINERY & EQUIPMENT	
1 - 4.....	63
5 - 14.....	2
* - MINING & QUARRYING AND MANUFACTURING	(continued)

128/11/95

පාදිපාකම සහ නිලධාරීන්ගේ සංඛ්‍යාව

TABLE 10: DISTRIBUTION OF ESTABLISHMENT* & PERSONS ENGAGED BY DIVISIONAL
SECRETARY DIVISION & PERSONS ENGAGED SIZE CLASS
COLOMBO DISTRICT - RURAL SECTOR - 1995

D.S.DIVISION & INDUSTRY DIVISION	NO.OF ESTABLISHMENTS
31 ELECTRICAL MACHINERY & APPARATUS N.B.C.	
1 - 4.....	2
5 - 14.....	1
34 MOTOR VEHICLES, TRAILERS & SEMI-TRAILERS	
1 - 4.....	3
36 MANU.OF FURNITURE, MANUFACTURING N.B.C.	
1 - 4.....	38
5 - 14.....	6
15 & ABOVE.....	1
99 OTHER PRODUCT	
1 - 4.....	5
5 - 14.....	1
15 & ABOVE.....	2
HOMAGAMA	
14 OTHER MINING & QUARRYING	
1 - 4.....	33
5 - 14.....	52
15 & ABOVE.....	10
15 FOOD PRODUCTS & BEVRAGES	
1 - 4.....	202
5 - 14.....	24
15 & ABOVE.....	12
16 TOBACCO PRODUCTS	
1 - 4.....	8
17 TEXTILES	
1 - 4.....	97
5 - 14.....	20
15 & ABOVE.....	9
18 WEARING APPEREL DRESSING & DYEING OF FUR	
1 - 4.....	275
5 - 14.....	33
15 & ABOVE.....	20
19 TRAINING & DRESSING OF LEATHER, LEATHER GOODS & FOOTWEAR	
1 - 4.....	58
5 - 14.....	19
15 & ABOVE.....	4
20 WOOD & WOOD PRODUCTS, EXCEPT FURNITURE	
1 - 4.....	115
5 - 14.....	29
15 & ABOVE.....	10
21 PAPER & PAPER PRODUCTS	
1 - 4.....	21
5 - 14.....	4
15 & ABOVE.....	7
22 PUBLISHING, PRINTING & REPRODUCTION OF RECORDED MEDIA	
1 - 4.....	2
5 - 14.....	1
15 & ABOVE.....	1

* - MINING & QUARRYING AND MANUFACTURING

(continued)

TABLE 10: DISTRIBUTION OF ESTABLISHMENT* & PERSONS ENGAGED BY DIVISIONAL SECRETARY DIVISION & PERSONS ENGAGED SIZE CLASS
 COLONBO DISTRICT - RURAL SECTOR - 1995

D.S.DIVISION & INDUSTRY DIVISION	NO.OF ESTABLISHMENTS
24 CHEMICALS & CHEMICAL PRODUCTS	
1 - 4.....	21
5 - 14.....	4
15 & ABOVE.....	4
25 RUBBER & PLASTICS PRODUCTS	
1 - 4.....	61
5 - 14.....	3
15 & ABOVE.....	9
26 OTHER NON-METALIC MINERAL PRODUCTS	
1 - 4.....	137
5 - 14.....	28
15 & ABOVE.....	7
27 BASIC METAL INDUSTRIES	
1 - 4.....	1
28 FABRICATED METAL PRODUCTS, EXCEPT MACHINERY & EQUIPMENT	
1 - 4.....	52
5 - 14.....	5
15 & ABOVE.....	2
29 MACHINERY & EQUIPMENT N.E.C.	
1 - 4.....	1
15 & ABOVE.....	1
31 ELECTRICAL MACHINERY & APPARATUS N.E.C.	
1 - 4.....	1
5 - 14.....	1
15 & ABOVE.....	2
32 RADIO, TELEVISION & COMMUNICATION EQUIPMENT & APPARATUS	
1 - 4.....	2
34 MOTOR VEHICLES, TRAILERS & SEMI-TRAILERS	
1 - 4.....	4
15 & ABOVE.....	2
36 MANU.OF FURNITURE, MANUFACTURING N.E.C.	
1 - 4.....	37
5 - 14.....	5
15 & ABOVE.....	9
99 OTHER PRODUCT	
1 - 4.....	4
15 & ABOVE.....	7
KADUWELA	
14 OTHER MINING & QUARRYING	
1 - 4.....	10
5 - 14.....	15
15 & ABOVE.....	1
15 FOOD PRODUCTS & BEVERAGES	
1 - 4.....	44
5 - 14.....	8
15 & ABOVE.....	4

* - MINING & QUARRYING AND MANUFACTURING

(continued)

TABLE 10: DISTRIBUTION OF ESTABLISHMENTS* & PERSONS ENGAGED BY DIVISIONAL
SECRETARY DIVISION & PERSONS ENGAGED SIZE CLASS
COLOMBO DISTRICT - RURAL SECTOR - 1995

D.S. DIVISION & INDUSTRY DIVISION	NO. OF ESTABLISHMENTS
16 TOBACCO PRODUCTS	
1 - 4.....	1
5 - 14.....	1
17 TEXTILES	
1 - 4.....	4
5 - 14.....	3
15 & ABOVE.....	3
18 WEARING APPEREL DRESSING & DYEING OF FUR	
1 - 4.....	31
5 - 14.....	4
15 & ABOVE.....	3
19 TRAINING & DRESSING OF LEATHER, LEATHER GOODS & FOOTWEAR	
1 - 4.....	3
5 - 14.....	1
15 & ABOVE.....	3
20 WOOD & WOOD PRODUCTS, EXCEPT FURNITURE	
1 - 4.....	23
5 - 14.....	5
15 & ABOVE.....	2
21 PAPER & PAPER PRODUCTS	
1 - 4.....	2
22 PUBLISHING, PRINTING & REPRODUCTION OF RECORDED MEDIA	
1 - 4.....	1
24 CHEMICALS & CHEMICAL PRODUCTS	
1 - 4.....	2
5 - 14.....	1
15 & ABOVE.....	1
25 RUBBER & PLASTICS PRODUCTS	
1 - 4.....	8
5 - 14.....	2
15 & ABOVE.....	1
26 OTHER NON-METALIC MINERAL PRODUCTS	
1 - 4.....	40
5 - 14.....	5
15 & ABOVE.....	1
27 BASIC METAL INDUSTRIES	
1 - 4.....	3
5 - 14.....	2
15 & ABOVE.....	2
28 FABRICATED METAL PRODUCTS, EXCEPT MACHINERY & EQUIPMENT	
1 - 4.....	19
5 - 14.....	5
15 & ABOVE.....	2
29 MACHINERY & EQUIPMENT N.E.C.	
15 & ABOVE.....	1

* - MINING & QUARRYING AND MANUFACTURING

(continued)

TABLE 10: DISTRIBUTION OF ESTABLISHMENT* & PERSONS ENGAGED BY DIVISIONAL
SECRETARY DIVISION & PERSONS ENGAGED SIZE CLASS
COLOMBO DISTRICT - RURAL SECTOR - 1995

D.S.DIVISION & INDUSTRY DIVISION	NO.OF ESTABLISHMENTS
34 MOTOR VEHICLES, TRAILERS & SEMI-TRAILERS	
1 - 4.....	2
5 - 14.....	3
35 OTHER TRANSPORT EQUIPMENT	
15 & ABOVE.....	1
36 MANU.OF FURNITURE, MANUFACTURING N.E.C.	
1 - 4.....	13
5 - 14.....	4
99 OTHER PRODUCT	
1 - 4.....	1
5 - 14.....	2
KESBEWA	
14 OTHER MINING & QUARRYING	
15 & ABOVE.....	1
15 FOOD PRODUCTS & BEVERAGES	
1 - 4.....	122
5 - 14.....	26
15 & ABOVE.....	7
16 TOBACCO PRODUCTS	
1 - 4.....	4
17 TEXTILES	
1 - 4.....	55
5 - 14.....	14
15 & ABOVE.....	11
18 WEARING APPEREL DRESSING & DYEING OF FUR	
1 - 4.....	258
5 - 14.....	24
15 & ABOVE.....	38
19 TRAINING & DRESSING OF LEATHER, LEATHER GOODS & FOOTWEAR	
1 - 4.....	27
5 - 14.....	3
15 & ABOVE.....	5
20 WOOD & WOOD PRODUCTS. EXCEPT FURNITURE	
1 - 4.....	194
5 - 14.....	56
15 & ABOVE.....	27
21 PAPER & PAPER PRODUCTS	
1 - 4.....	23
5 - 14.....	3
15 & ABOVE.....	4
22 PUBLISHING, PRINTING & REPRODUCTION OF RECORDED MEDIA	
1 - 4.....	17
5 - 14.....	2
15 & ABOVE.....	4
24 CHEMICALS & CHEMICAL PRODUCTS	
1 - 4.....	20
5 - 14.....	3
15 & ABOVE.....	4

* - MINING & QUARRYING AND MANUFACTURING

(continued)

TABLE 10: DISTRIBUTION OF ESTABLISHMENT* & PERSONS ENGAGED BY DIVISIONAL SECRETARY DIVISION & PERSONS ENGAGED SIZE CLASS
COLOMBO DISTRICT - RURAL SECTOR - 1995

D.S.DIVISION & INDUSTRY DIVISION	NO.OF ESTABLISHMENTS
25 RUBBER & PLASTICS PRODUCTS	
1 - 4.....	21
5 - 14.....	19
15 & ABOVE.....	6
26 OTHER NON-METALIC MINERAL PRODUCTS	
1 - 4.....	94
5 - 14.....	16
15 & ABOVE.....	7
27 BASIC METAL INDUSTRIES	
1 - 4.....	1
5 - 14.....	1
15 & ABOVE.....	3
28 FABRICATED METAL PRODUCTS, EXCEPT MACHINERY & EQUIPMENT	
1 - 4.....	77
5 - 14.....	6
15 & ABOVE.....	1
29 MACHINERY & EQUIPMENT N.B.C.	
5 - 14.....	1
31 ELECTRICAL MACHINERY & APPARATUS N.B.C.	
1 - 4.....	3
5 - 14.....	1
15 & ABOVE.....	1
32 RADIO, TELEVISION & COMMUNICATION EQUIPMENT & APPARATUS	
1 - 4.....	1
5 - 14.....	2
35 OTHER TRANSPORT EQUIPMENT	
15 & ABOVE.....	1
36 MANU. OF FURNITURE, MANUFACTURING N.B.C.	
1 - 4.....	110
5 - 14.....	18
15 & ABOVE.....	7
99 OTHER PRODUCT	
1 - 4.....	2
5 - 14.....	1
15 & ABOVE.....	2
KOLONNAWA	
14 OTHER MINING & QUARRYING	
1 - 4.....	1
5 - 14.....	7
15 FOOD PRODUCTS & BEVERAGES	
1 - 4.....	47
5 - 14.....	25
15 & ABOVE.....	5
16 TOBACCO PRODUCTS	
1 - 4.....	1

* - MINING & QUARRYING AND MANUFACTURING

(continued)

TABLE 10: DISTRIBUTION OF ESTABLISHMENT* & PERSONS ENGAGED BY DIVISIONAL
SECRETARY DIVISION & PERSONS ENGAGED SIZE CLASS
COLOMBO DISTRICT - RURAL SECTOR - 1995

D.S.DIVISION & INDUSTRY DIVISION	NO. OF ESTABLISHMENTS
17 TEXTILES	
1 - 4.....	4
5 - 14.....	4
15 & ABOVE.....	3
18 WEARING APPEREL DRESSING & DYEING OF FUR	
1 - 4.....	69
5 - 14.....	10
15 & ABOVE.....	9
19 TRAINING & DRESSING OF LEATHER, LEATHER GOODS & FOOTWEAR	
1 - 4.....	21
5 - 14.....	3
15 & ABOVE.....	2
20 WOOD & WOOD PRODUCTS, EXCEPT FURNITURE	
1 - 4.....	37
5 - 14.....	18
15 & ABOVE.....	9
21 PAPER & PAPER PRODUCTS	
1 - 4.....	15
5 - 14.....	2
24 CHEMICALS & CHEMICAL PRODUCTS	
1 - 4.....	7
15 & ABOVE.....	2
25 RUBBER & PLASTICS PRODUCTS	
1 - 4.....	7
5 - 14.....	1
15 & ABOVE.....	3
26 OTHER NON-METALIC MINERAL PRODUCTS	
1 - 4.....	102
5 - 14.....	7
15 & ABOVE.....	6
28 FABRICATED METAL PRODUCTS, EXCEPT MACHINERY & EQUIPMENT	
1 - 4.....	39
5 - 14.....	9
15 & ABOVE.....	2
31 ELECTRICAL MACHINERY & APPARATUS N.E.C.	
15 & ABOVE.....	2
34 MOTOR VEHICLES, TRAILERS & SEMI-TRAILERS	
1 - 4.....	3
15 & ABOVE.....	1
35 OTHER TRANSPORT EQUIPMENT	
1 - 4.....	1
36 MANU. OF FURNITURE, MANUFACTURING N.E.C.	
1 - 4.....	20
5 - 14.....	2
15 & ABOVE.....	1
99 OTHER PRODUCT	
1 - 4.....	6

* - MINING & QUARRYING AND MANUFACTURING

(continued)

TABLE 10: DISTRIBUTION OF ESTABLISHMENT* & PERSONS ENGAGED BY DIVISIONAL
SECRETARY DIVISION & PERSONS ENGAGED SIZE CLASS
COLOMBO DISTRICT - RURAL SECTOR - 1995

D.S.DIVISION & INDUSTRY DIVISION	NO.OF ESTABLISHMENTS
MAHARAGAMA	
14 OTHER MINING & QUARRYING	
5 - 14.....	2
15 & ABOVE.....	1
15 FOOD PRODUCTS & BEVERAGES	
1 - 4.....	47
5 - 14.....	10
15 & ABOVE.....	7
16 TOBACCO PRODUCTS	
15 & ABOVE.....	1
17 TEXTILES	
1 - 4.....	70
5 - 14.....	5
15 & ABOVE.....	8
18 WEARING APPEREL DRESSING & DYEING OF FUR	
1 - 4.....	239
5 - 14.....	35
15 & ABOVE.....	25
19 TRAINING & DRESSING OF LEATHER, LEATHER GOODS & FOOTWEAR	
1 - 4.....	13
5 - 14.....	8
20 WOOD & WOOD PRODUCTS, EXCEPT FURNITURE	
1 - 4.....	41
5 - 14.....	12
15 & ABOVE.....	4
21 PAPER & PAPER PRODUCTS	
1 - 4.....	7
15 & ABOVE.....	3
22 PUBLISHING, PRINTING & REPRODUCTION OF RECORDED MEDIA	
1 - 4.....	9
5 - 14.....	5
15 & ABOVE.....	1
24 CHEMICALS & CHEMICAL PRODUCTS	
1 - 4.....	6
5 - 14.....	2
25 RUBBER & PLASTICS PRODUCTS	
1 - 4.....	19
5 - 14.....	4
15 & ABOVE.....	1
26 OTHER NON-METALIC MINERAL PRODUCTS	
1 - 4.....	26
5 - 14.....	9
15 & ABOVE.....	2
27 BASIC METAL INDUSTRIES	
1 - 4.....	1

* - MINING & QUARRYING AND MANUFACTURING

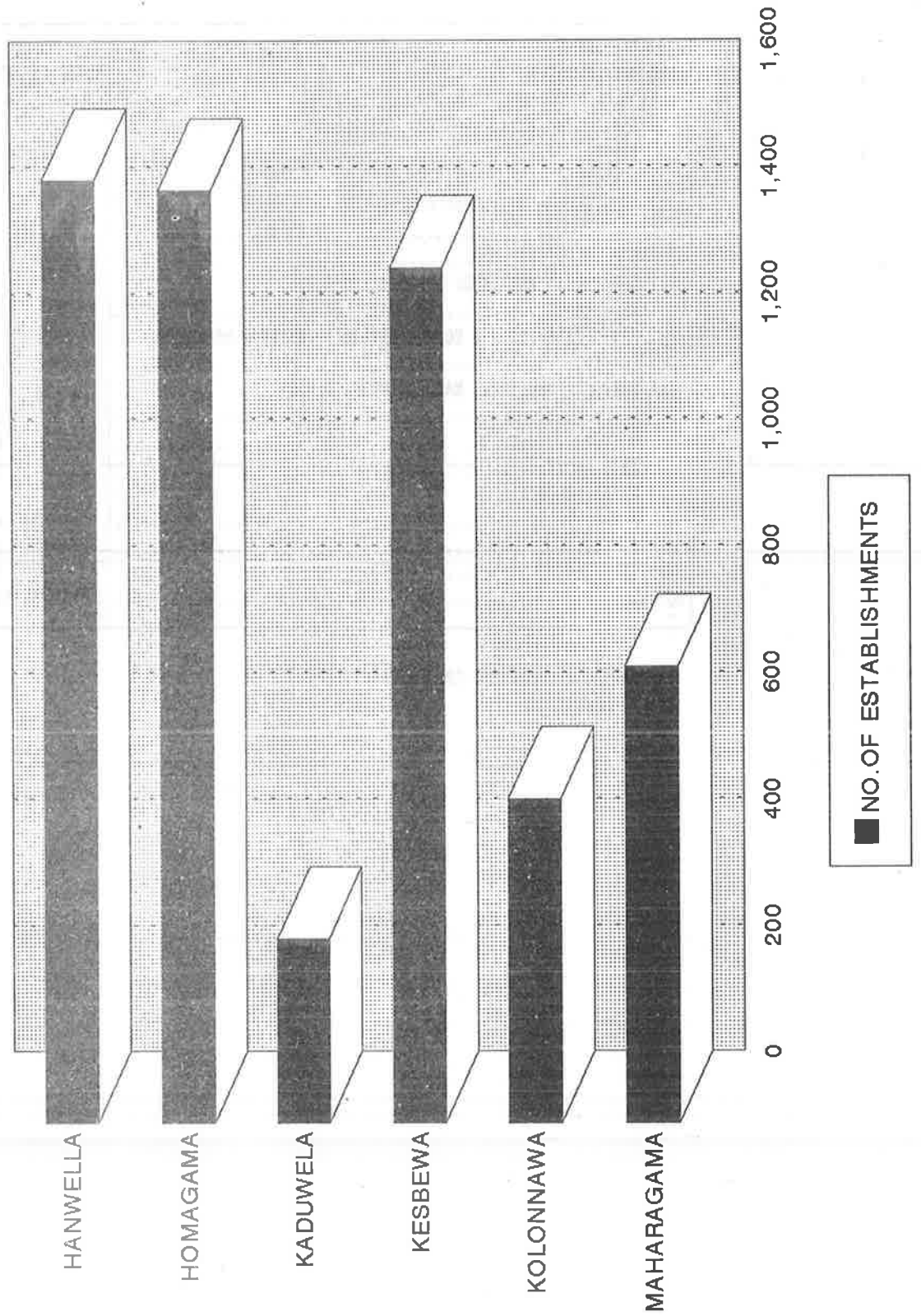
(continued)

TABLE 10: DISTRIBUTION OF ESTABLISHMENT* & PERSONS ENGAGED BY DIVISIONAL
SECRETARY DIVISION & PERSONS ENGAGED SIZE CLASS
COLOMBO DISTRICT - RURAL SECTOR - 1995

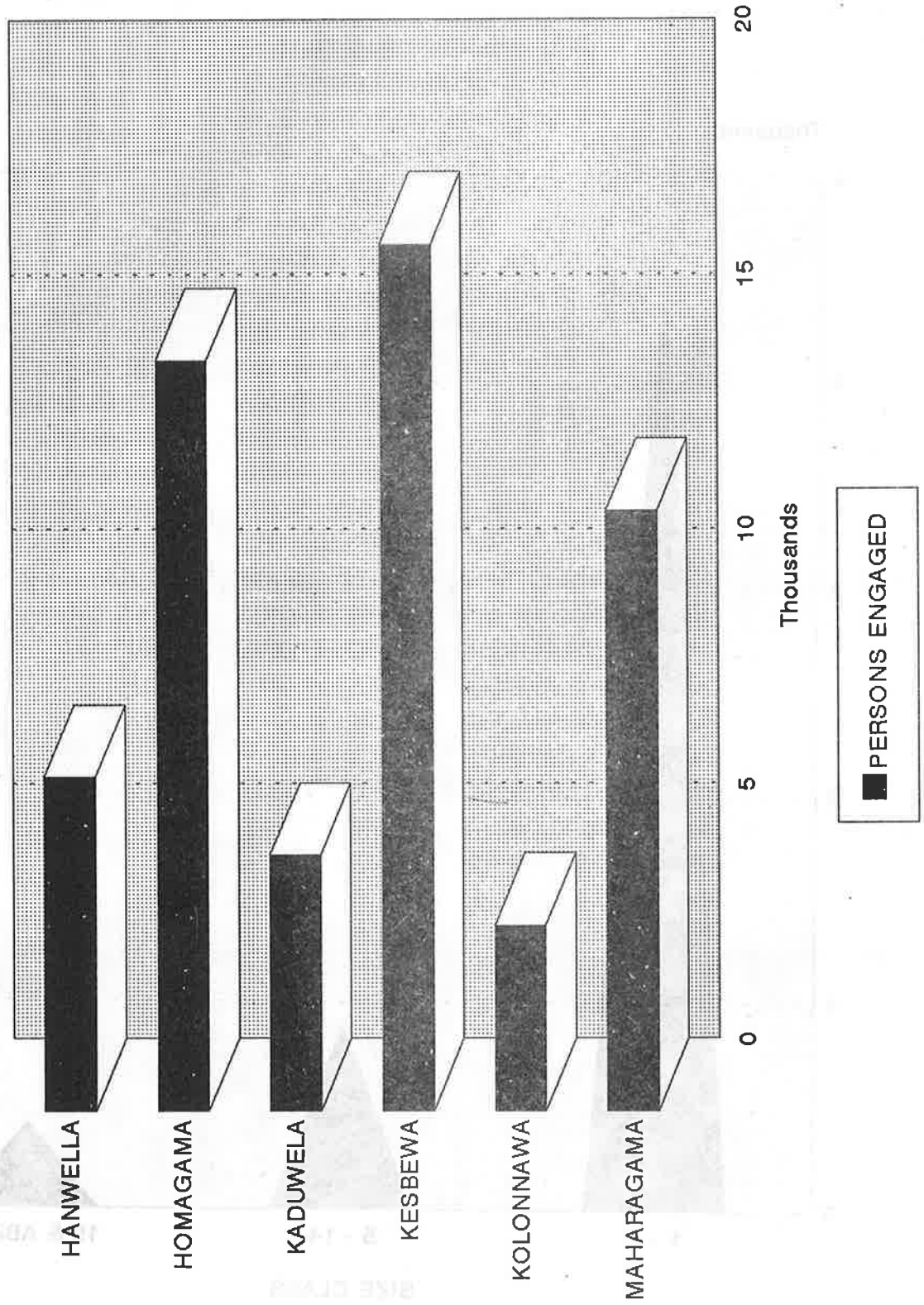
D.S.DIVISION & INDUSTRY DIVISION	NO.OF ESTABLISHMENTS
28 FABRICATED METAL PRODUCTS, EXCEPT MACHINERY & EQUIPMENT	
1 - 4.....	51
5 - 14.....	11
29 MACHINERY & EQUIPMENT N.B.C.	
1 - 4.....	1
5 - 14.....	3
31 ELECTRICAL MACHINERY & APPARATUS N.B.C.	
15 & ABOVE.....	2
32 RADIO, TELEVISION & COMMUNICATION EQUIPMENT & APPARATUS	
1 - 4.....	2
36 MANU.OF FURNITURE, MANUFACTURING N.B.C.	
1 - 4.....	13
5 - 14.....	6
15 & ABOVE.....	1
99 OTHER PRODUCT	
1 - 4.....	6
5 - 14.....	2
15 & ABOVE.....	1
TOTAL.....	5,851

* - MINING & QUARRING AND MANUFACTURING

NO.OF ESTABLISHMENTS BY D.S.DIVISION
RURAL SECTOR - 1995
COLOMBO DISTRICT

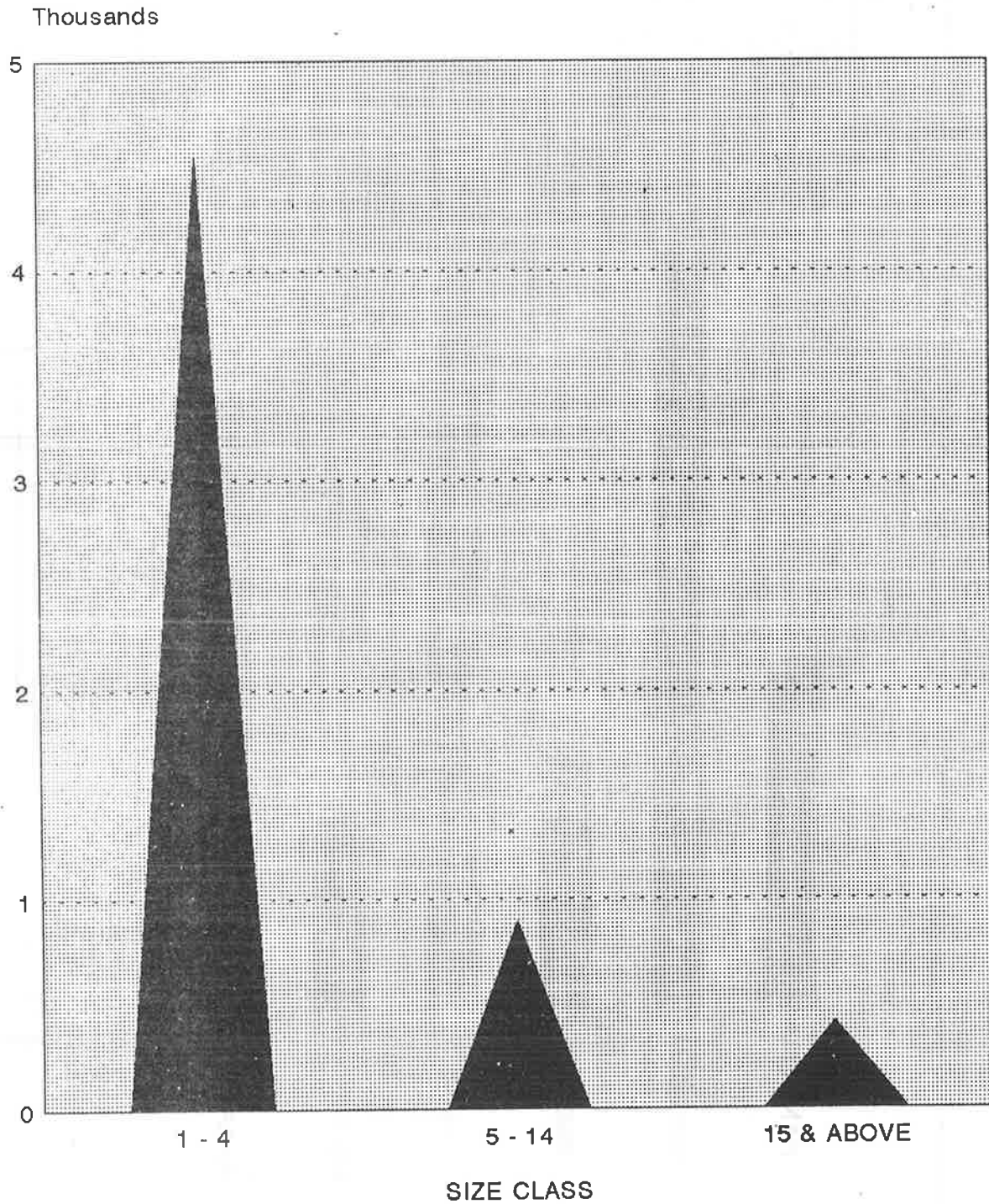


PERSONS ENGAGED BY D.S.DIVISION RURAL SECTOR - 1995 COLOMBO DISTRICT



NO.OF ESTABLISHMENT BY PERSONS ENGAGED SIZE CLASS

RURAL SECTOR - 1995
COLOMBO DISTRICT

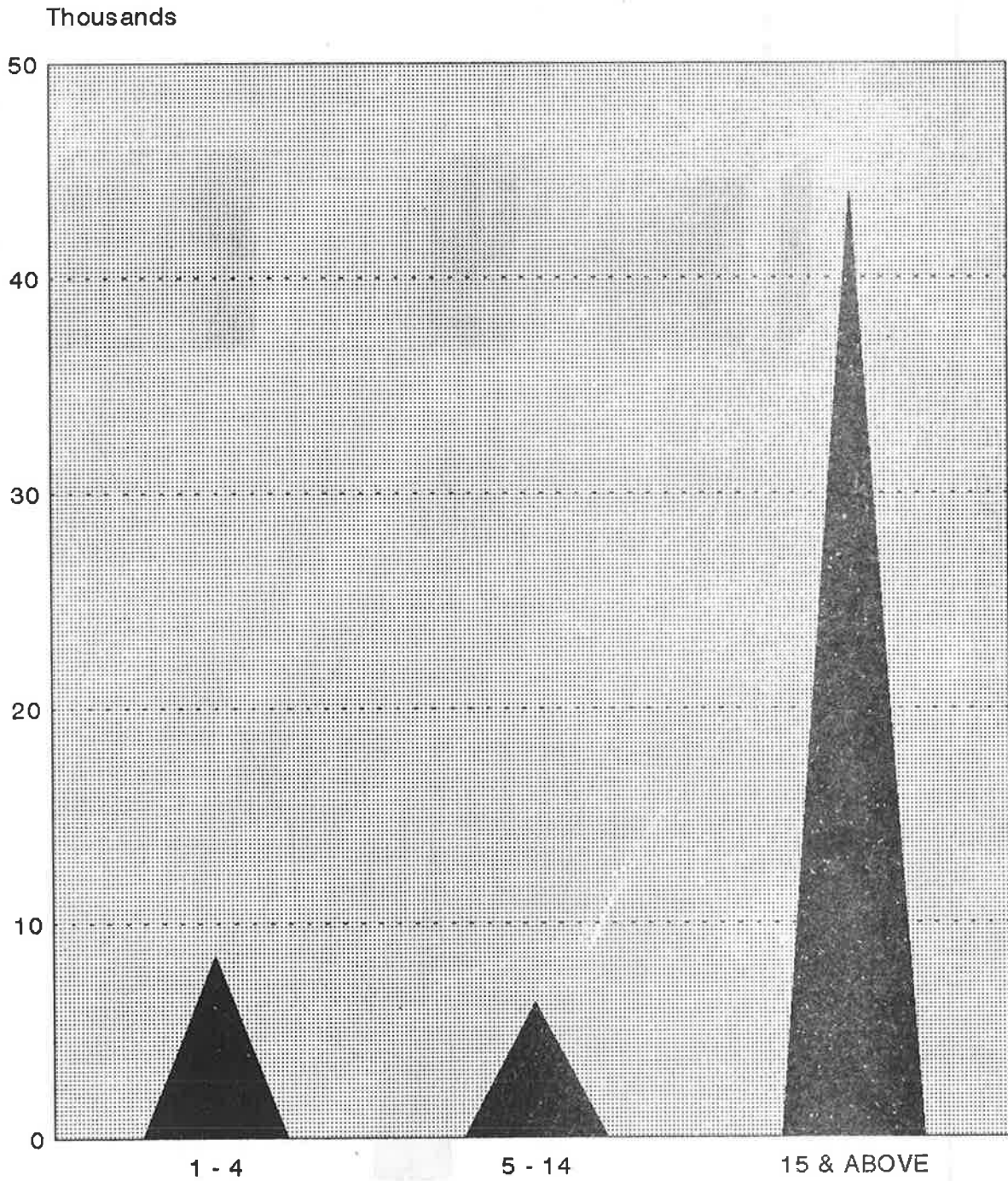


▲ NO.OF ESTABLISHMENTS

PERSONS ENGAGED BY SIZE CLASS

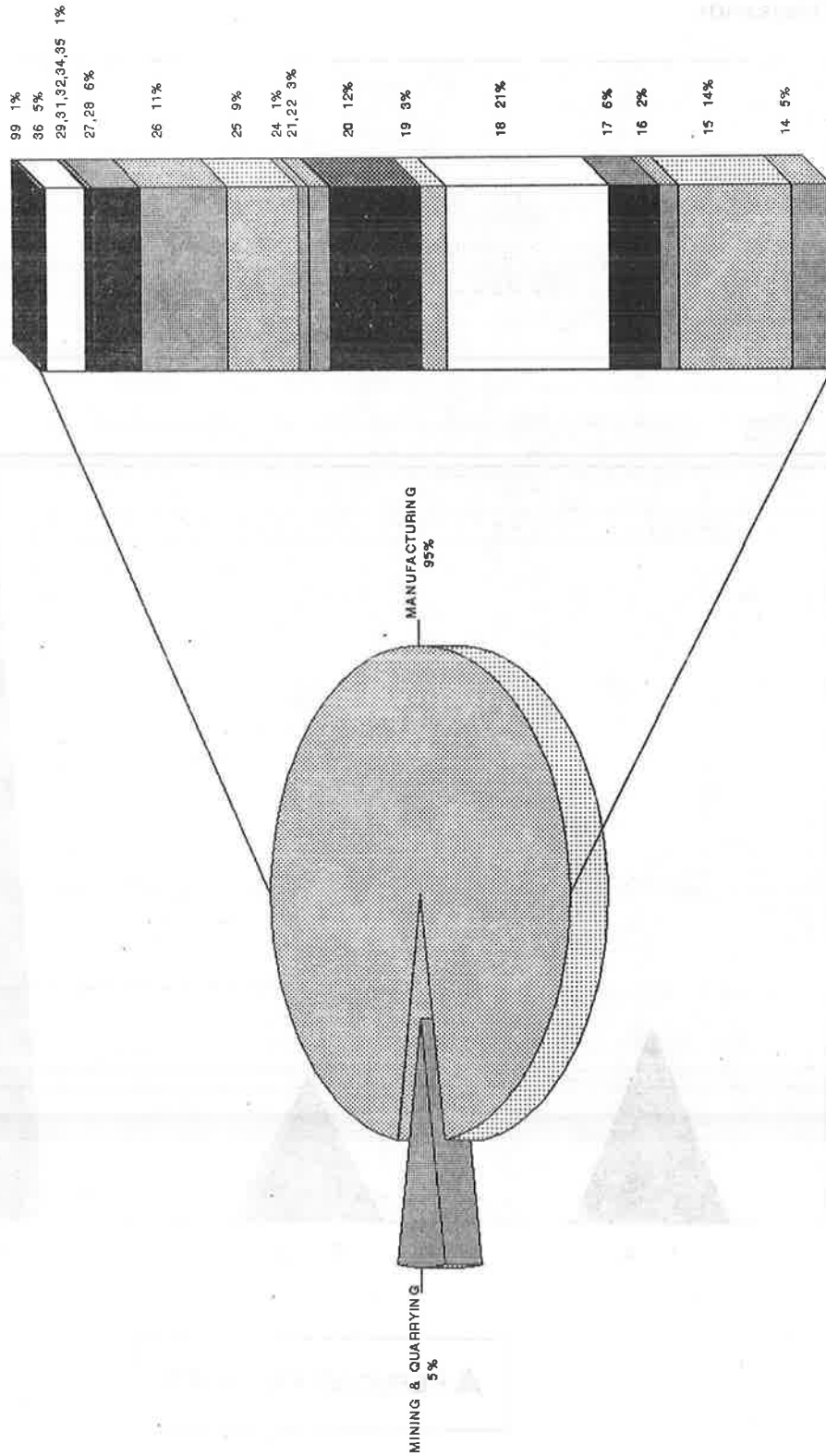
RURAL SECTOR - 1995

COLOMBO DISTRICT



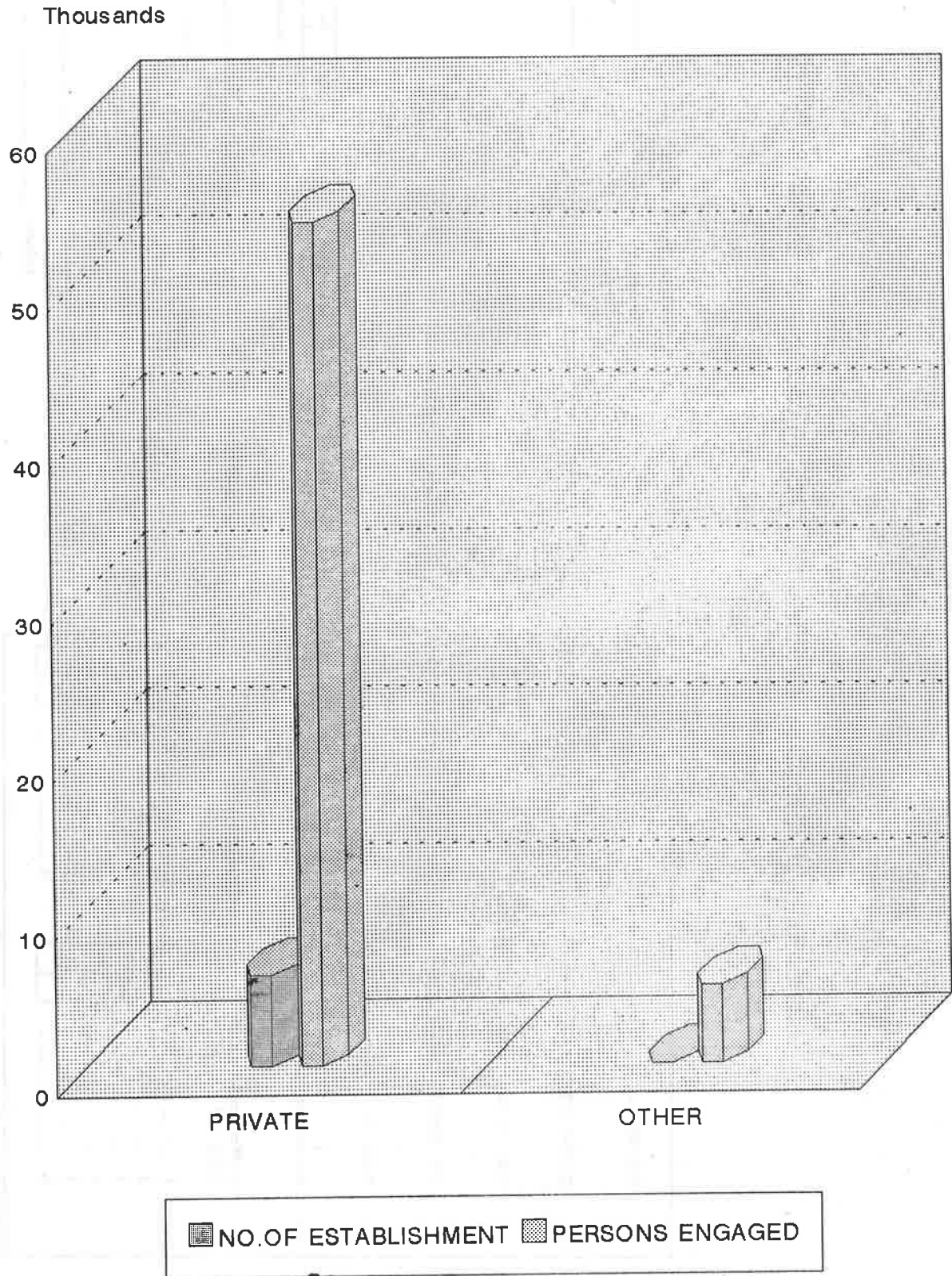
▲ PERSONS ENGAGED

NO.OF ESTABLISHMENTS BY INDUSTRY DIVISION RURAL SECTOR - 1995 COLOMBO DISTRICT



NO.OF ESTABLISHMENT & PERSONS ENGAGED BY TYPE OF SECTOR

RURAL SECTOR - 1995
COLOMBO DISTRICT





L
 ലോക്ക്
 අංකം

ජනලේඛන හා සංඛ්‍යාලේඛන දෙපාර්තමේන්තුව
කෘෂිකාර්මික නොවන ආර්ථික කටයුතු ලැයිස්තුගත කිරීම - 1995

(පියළු ගොඩනැගිලි සඳහා)

ප්‍රාථමික ඒකකය පිළිබඳ විස්තර

01. දිස්ත්‍රික්කය:.....	<input type="text"/>	<input type="text"/>	
02. ප්‍රාදේශීය ලේකම් කොට්ඨාසය:.....	<input type="text"/>	<input type="text"/>	
03. මැතිවරණ කොට්ඨාසය:.....	<input type="text"/>	<input type="text"/>	
04. ග්‍රාම නිලධාරී කොට්ඨාසය:.....	<input type="text"/>	<input type="text"/>	
05. අංශය: 1. නාගරික 2. ග්‍රාමීය 3. වතු	<input type="text"/>	<input type="text"/>	<input type="text"/>
06. ම.න.ස./ න.ස./ ප්‍රාදේශීය සභාව:.....	<input type="text"/>	<input type="text"/>	<input type="text"/>
07. ප්‍රාථමික ඒකකය තුළ පිහිටි නාගරික කොට්ඨාස/ ගම්/ වතු/ල නම්:			
1	<input type="text"/>	<input type="text"/>	7
2	<input type="text"/>	<input type="text"/>	8
3	<input type="text"/>	<input type="text"/>	9
4	<input type="text"/>	<input type="text"/>	10
5	<input type="text"/>	<input type="text"/>	11
6	<input type="text"/>	<input type="text"/>	12

විස්තරය	පිටු ගණන	ඒකක ගණන
1. නිවාස හා අනෙකුත් ගොඩනැගිලි (L)	<input type="text"/>	<input type="text"/>
2. කර්මාන්ත ගණන (L1)	<input type="text"/>	<input type="text"/>
3. වෙළෙඳ හා සේවා ආයතන	<input type="text"/>	<input type="text"/>
4. සාදන ලද ගොඩනැගිලි ගණන (L3)	<input type="text"/>	<input type="text"/>
5. සාමාන්‍යයෙන් පදිංචි පුද්ගලයින් ගණන	<input type="text"/>	<input type="text"/>

ලැයිස්තුගත කරන නිලධාරියාගේ නම:

අත්සන:

දිනය:

අධීක්ෂණ නිලධාරියාගේ නම:

අත්සන:

දිනය:

Printed by Department of Census and Statistics

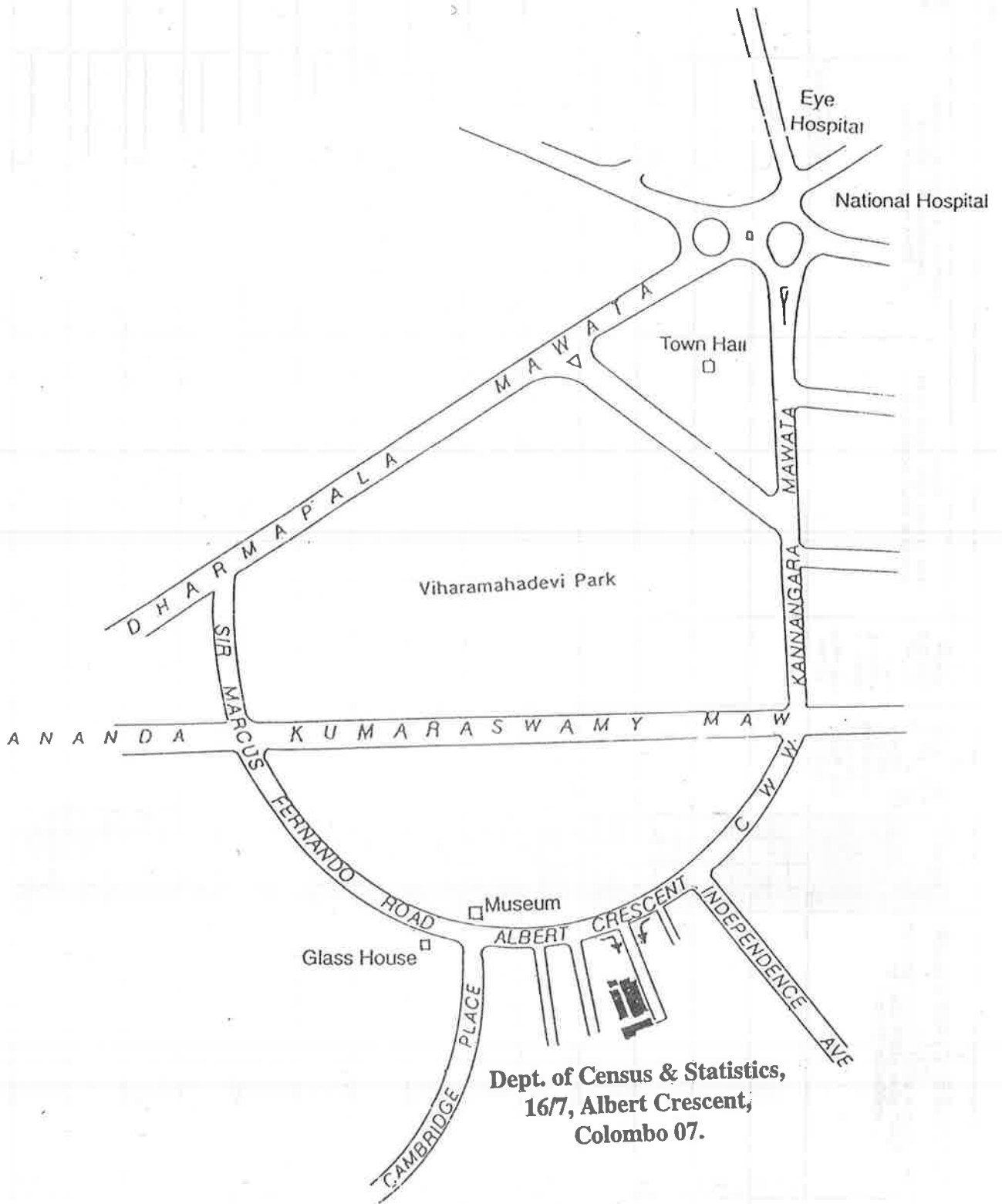
L3
 සිදු
 අංකය

ජනලේඛන හා සංඛ්‍යාලේඛන දෙපාර්තමේන්තුව
කෘෂිකාර්මික නොවන ආර්ථික කටයුතු ලැයිස්තුගත කිරීම - 1995
 (ගොඩනැගිලි ඉදිකිරීම පදනා - 1995 ජනවාරි 01 සිට ජුනි 30 දක්වා)

01. දිස්ත්‍රික්කය:..... 04. අංශය: 1. නාගරික 2. ග්‍රාමීය 3. වතු.
02. ප්‍රාදේශීය ලේකම් කොට්ඨාශය:..... 05. ම.ත.ස./ න.ස./ ප්‍රාදේශීය පහසු:.....
03. ග්‍රාම නිලධාරී කොට්ඨාශ අංකය:..... නම:.....

1	2	3	4	5	6	7	8
කාර්යාලයේ ප්‍රධානියාගේ සඳහා අනුමැති අංකය	මෙම ජාත්‍යන්තර පිදුමේ ඉදිකිරීම් කටයුත්තෙහි පරිච්ඡේදය (එනම් ජාත්‍යන්තර ඉදිකිරීම් කිරීමට පිටුපස පිටුපස අති විවෘත ඉදිකිරීම් වර්ග අනුපිළිවෙලින් ලියන්න.)	සුදාසාව.	1995 ජනවාරි 01 සිට ජුනි 30 තුළ කරන ලද වැඩ වෙනුවෙන් දරන ලද මාරු (ඇසුරුම් කරන ලද මුළු වියදම (රුපියල්))	ඉදිකිරීම් පදනම මාරු වූ රජයේ -1 පිදුම -2 වෙනත් -3 අදාළ කොටස ලියන්න.	පිහිටීම (මෙම ජාත්‍යන්තර ඉදිකිරීම් සඳහා ගැනීම සඳහා ප්‍රමාණවත් විස්තර සපුරා ඇති බවට තීරණය කරන්න.)	ඉදිකිරීම් කටයුතු කරන කාර්යාලය (කොන්ත්‍රාත්කරු/ අධිකාරී) නම් ලියන්න හෝ ද්‍රව්‍යාලය අංකය	වෙනත් තොරතුරු
1.							
2.							
3.							
1.							
2.							
3.							
1.							
2.							
3.							
1.							
2.							
3.							
1.							
2.							
3.							
1.							
2.							
3.							
1.							
2.							
3.							

Location map of the sales counter of the Department of Census & Statistics



**PUBLICATIONS OF THE
DEPARTMENT OF CENSUS AND STATISTICS
AVAILABLE FOR SALES**

**AT
THE SAMPLE SURVEY DIVISION,
DEPARTMENT OF CENSUS AND STATISTICS,
16/7, ALBERT CRESCENT, COLOMBO 07.
Telephone 695962 - Ext. 17.**

Name of Publication	** GENERAL PURPOSE PUBLICATION *	Year	Price
1. Statistical Pocket Book in English		1988	46.00
2. Statistical Pocket Book in English		1990	39.00
3. Statistical Pocket Book in English		1994	50.00
4. Statistical Pocket Book in English		1995	50.00
5. Statistical Pocket Book in English		1997	52.50
6. Statistical Pocket Book in English		1998	53.00
7. Statistical Pocket Book in Sinhala and Tamil		1987	46.00
8. Statistical Pocket Book in Sinhala and Tamil		1988	79.00
9. Statistical Pocket Book in Sinhala and Tamil		1990	161.00
10. Statistical Pocket Book in Sinhala and Tamil		1991	175.00
11. Statistical Pocket Book in Sinhala and Tamil		1993	189.00
12. Statistical Pocket Book in Sinhala and Tamil		1994	119.00
13. Statistical Abstract in English		1989	203.00
14. Statistical Abstract in English		1992	285.00
15. Statistical Abstract in English		1993	300.00
16. Statistical Abstract in English		1996	248.00
17. Statistical Abstract in English		1997	210.00
18. Administration Report of Director General Census & Statistics		1995	50.00
19. Administration Report of Director General Census & Statistics		1996	50.00
20. Administration Report of Director General Census & Statistics		1997	53.00
Population and Demography			
1. Census of Population and Housing - (Physically disabled person)		1981	20.00
2. Census of Population and Housing - District Report (each)		1981	50.00
3. Sri Lanka Demographic and Health Survey		1993	310.00
4. Demographic Survey 1994 Sri Lanka (Report on Demographic Characteristics of the Population) Release 3		1994	124.00
5. Demographic Survey 1994 Sri Lanka (Report on Demographic and Housing Characteristics) Release 4		1994	110.00
6. Grama Niladhari Divisions of Sri Lanka		1996	295.00
Agriculture			
1. Estimation of Sown Area under Paddy Cultivation (Alternative to complete enumeration)			19.50
2. Food Balance Sheet (Revised Series)		1991/95	33.00
3. Food Balance Sheet (Revised Series)		1992/96	35.00
4. Food Balance Sheet (Revised Series)		1992/97	39.00
5. Paddy Statistics (Seasonal Report) each			20.00
6. Rubber Cultivation in Sri Lanka		1993	40.00
7. States and Role of Cinnamon Cultivation in Sri Lanka		1993	70.00
8. Cardamon "The Queen of spices" and Distribution in Sri Lanka		1993	68.00
9. Rambutan Cultivation in Sri Lanka		1993	43.00
10. Sowing and Harvesting periods of Paddy Cultivation in Sri Lanka		1994	80.00
11. Agricultural Statistics of Sri Lanka		1995	97.00
12. Paddy Statistics of Sri Lanka		1952/96	
a) With diskette			241.00
b) Without diskette			191.00

12. Agricultural Crops & Livestock Survey Preliminary Reports		
(1) Badulla District	1992/93	80.00
(2) Colombo District	1992/93	56.50
(3) Galle District	1992/93	70.00
(4) Hambantota District	1992/93	75.00
(5) Kalutara District	1992/03	78.00
(6) Kegalle District	1992/93	56.00
(7) Kurunegala District	1992/93	160.00
(8) Matale District	1992/93	80.00
(9) Matara District	1992/93	61.00
(10) Moneragala District	1992/93	53.00
(11) Ratnapura District	1992/93	85.00
(12) Mahaweli System "H"	1993/94	40.00
(13) Puttalam District	1993/94	71.00
(14) Polonnaruwa District	1993/94	44.00
(15) Anuradhapura District	1993/94	90.50
** TRADE AND INDUSTRY **		
1. Annual Survey of Industries	1991	30.00
2. Annual Survey of Industries	1992, 93:94 (each)	37.00
** NATIONAL ACCOUNTS **		
1. National Accounts of Sri Lanka [Part II]	1975/85	27.00
2. National Accounts of Sri Lanka [Part I]	1975/86	12.50
3. National Accounts of Sri Lanka	1989	66.00
4. National Accounts of Sri Lanka	1993	102.00
5. National Accounts of Sri Lanka	1994	111.00
6. National Accounts of Sri Lanka (Sinhala)	1994	123.00
7. National Accounts of Sri Lanka (Sinhala)	1995	143.00
8. National Accounts of Sri Lanka	1996	150.00
** PRICES AND WAGES **		
1. Bulletin of Selected Retail Prices	1983/85	18.50
2. Bulletin of Selected Retail Prices	1975/90	62.50
3. Bulletin of Selected Retail Prices	1975/91	60.00
4. Bulletin of Selected Retail Prices	1975/92	77.00
5. Bulletin of Selected Retail & Producer Prices	1995	127.00
6. Weekly Retail Prices - Colombo City		
(a) Bulletin No: I	1990	30.00
(b) Bulletin No: II	1991/92	30.00
(c) Bulletin No: III	1992/93	25.00
(d) Bulletin No: IV	1993/94	43.50
(e) Bulletin No: V (January 1995 - December 1995)	1995	38.00
** SURVEY REPORTS**		
1. Quarterly Report of the Sri Lanka Labour Force Survey		
(a) 1st, 2nd & 4th Quarter (each)	1991	30.00
(b) 1st, 2nd & 4th Quarter (each)	1992	30.00
(c) Quarterly Report (each)	1993	40.00
(d) Quarterly Report (each)	1994	45.00
(e) 1st Quarter	1995	55.00
(f) 2nd Quarter	1995	65.00
(g) 3rd & 4th Quarter (each)	1995	64.00
(h) 1st, 2nd, 3rd and 4th Quarters (each)	1996	64.00
(i) 1st Quarter	1997	69.00
2. Sri Lanka Labour Force Survey (Sinhala)	1992	50.00
3. Provincial profile of Labour Force in Sri Lanka	1993	122.00
** OTHER REPORTS **		
1. Women & Men in Sri Lanka (Sinhala)		103.00
2. Women & Men in Sri Lanka (Tamil)		133.00
3. Changing Role of Women in Sri Lanka		200.00
4. Census of Public and Semi-Government Sector Employment	1994	280.00
5. Household Income and Expenditure Survey	1990/91	75.00
6. Household Income and Expenditure Survey	1993	74.00
7. Grama Niladhari Divisions of Sri Lanka	1996	295.00

ISBN 955 - 577 - 247 - 9